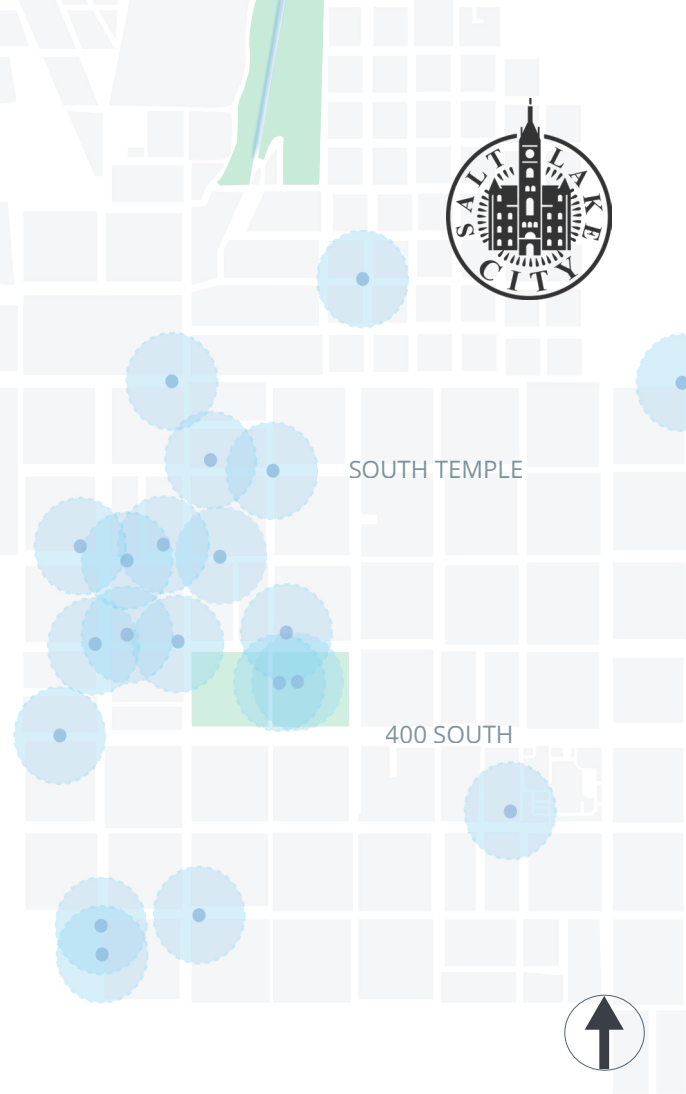
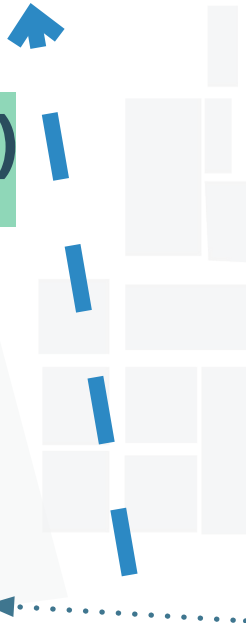
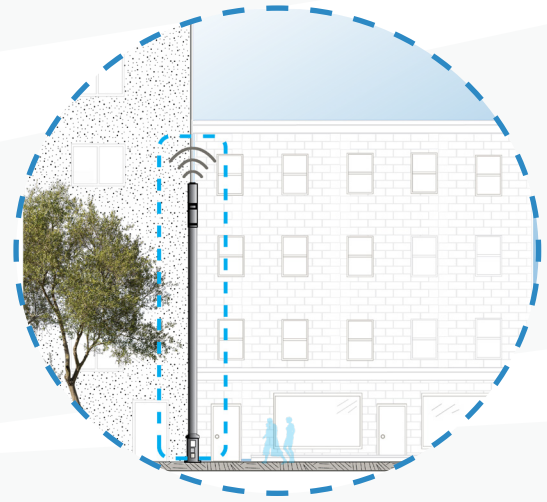


# SMALL CELL (5G) FACT SHEET



## WHAT IS A "SMALL CELL?"

Small Cell Facilities, also called "5G", are a type of wireless infrastructure. Small cells are about the size of a pizza box and can be attached to utility or light poles or to other structures.

To meet increasing demand for mobile, enhance 4G coverage, as well as lay the ground work for future wireless 5G technology, wireless service and infrastructure providers need to supplement traditional, larger cell phone towers with small cell facilities to densify their wireless networks.

## WHY ARE SMALL CELLS IN SALT LAKE CITY?

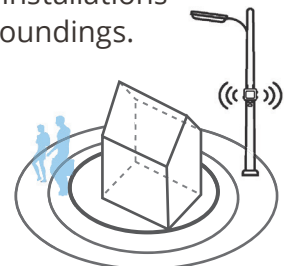
In the 2018 legislative session, state lawmakers approved the [Small Wireless Facilities Deployment Act S.B. 189](#). The state law (Utah Chapter 54.21) allows wireless service and infrastructure providers to co-locate small wireless facilities on existing poles or install new poles in the Right-of-Way (ROW). The law does not allow Salt Lake City to regulate the placement of the small cell facilities but does allow the City to create standards for the installation of the facilities. This is a new technology with many stakeholders and as such, local and federal regulations are subject to change.

## WHAT ARE THE DESIGN STANDARDS REGARDING SMALL CELLS?

You can read about small cell Infrastructure Design Standards at [www.slc.gov/engineering/small-cell-infrastructure-design-standards](http://www.slc.gov/engineering/small-cell-infrastructure-design-standards).

## WILL SMALL CELLS BE ALLOWED IN LOCAL HISTORIC DISTRICTS?

Small cells are allowed in local historic districts and adjacent to local landmark sites, with additional requirements to help ensure the new installations integrate into their surroundings.



## WHO DO I CALL IF THE RIGHT OF WAY IN FRONT OF MY RESIDENCE/BUSINESS IS DAMAGED DUE TO THE INSTALLATION OF SMALL CELL FACILITIES?

All installations are required to have labels identifying the provider and a 24 hour contact number. Providers can work with you to address the damage. If you need general information about small cells you can learn more at the City's small cell webpage [www.slc.gov/engineering/](http://www.slc.gov/engineering/), emailing [mystreet@slcgov.com](mailto:mystreet@slcgov.com) or calling (801) 535-7961.

## WHO WILL MAINTAIN THE SMALL CELL SITES?

All small wireless facilities and wireless provider-owned structures shall be maintained by the wireless provider.

## CAN STREET TREES BE TRIMMED FOR SMALL CELL INSTALLATION?

Trees in the ROW may be trimmed to prevent branches coming into contact with facilities. Any trimming must be done under the direction of the City's Urban Forester.

## CAN SALT LAKE CITY DENY WIRELESS FACILITY APPLICATIONS BASED ON ENVIRONMENTAL IMPACTS FROM RADIO FREQUENCY EMISSIONS?

No, existing federal regulations limit a local government's ability to regulate wireless facilities based on potential environmental effects (Telecom Act of 1996; 47 U.S.C. 332(c)(7)(B)(iv)).



## CAN SMALL CELLS BE LOCATED ON PRIVATE PROPERTY?

If and when a wireless provider identifies a good location for mounting small cell equipment on private property, it will be regulated by the City's Zoning Code.

## DO SMALL CELL INSTALLATIONS CAUSE HEALTH HAZARDS?

The Federal Communications Commission (FCC) sets limits for RF (radio frequency) emissions and all small cell equipment must comply with those federal RF limits. The FCC and American Cancer Society have information about RF safety on their websites:

- FCC: [www.fcc.gov/engineering-technology/electromagnetic-compatibility-division/radio-frequency-safety/faq/rf-safety](http://www.fcc.gov/engineering-technology/electromagnetic-compatibility-division/radio-frequency-safety/faq/rf-safety)
- American Cancer Society: [www.cancer.org/cancer/cancer-causes/radiation-exposure/cellular-phone-towers.html](http://www.cancer.org/cancer/cancer-causes/radiation-exposure/cellular-phone-towers.html)

## HOW IS SALT LAKE CITY MANAGING SMALL CELL DEPLOYMENT?

Salt Lake City requires master license agreements (MLAs) with wireless providers that want to install small cells in the City ROW. MLAs provide terms and conditions to protect public interests. Once a provider obtains a MLA, they will be required to obtain a ROW permit to construct small cell facilities within the City's right of way.

## QUESTIONS & COMMENTS?

Please email us at [mystreet@slcgov.com](mailto:mystreet@slcgov.com), or call Salt Lake City Small Cell at (801) 535-7961.

Para mas informacion en espanol, visite nuestro sitio web at [www.slc.gov/engineering/](http://www.slc.gov/engineering/)



Scan the QR code to be directed to the City's engineering webpage.