

**DRAFT - REVIEW ONLY
NOT FOR CONSTRUCTION**



PREPARED BY:



SALT LAKE CITY CORPORATION
COMMUNITY AND NEIGHBORHOODS
DIVISION of TRANSPORTATION
349 SOUTH 200 EAST, SUITE 150 SALT LAKE CITY, UTAH 84111-5502
TELEPHONE: 801-535-6630
FAX: 801-535-6019
E-MAIL: WWW.SLCCGOV.COM

PROFESSIONAL SEAL:

PROJECT IDENTIFICATION:
1000 W- North Temple to 600 N Street Improvements
Date: 6/2/2021

PROJECT OWNER:
SALT LAKE CITY CORPORATION
451 SOUTH STATE STREET
SALT LAKE CITY, UTAH 84111-2836
WWW.SLCCGOV.COM

| REV | DATE | DESCRIPTION |
|-----|------|-------------|
| | | |
| | | |
| | | |
| | | |
| | | |
| | | |
| | | |
| | | |
| | | |
| | | |

ENG. JOB #:
P.U. JOB # **N/A**
FAS NO.:
PREPARED BY: **SLC CORP.**
DRAWING FILE NAME:
DRAWN BY:
CHECKED BY:

SHEET TITLE:

Striping Plan

SHEET IDENTIFIER:

Sheet 1/7
BINDING ORDER

General Sheet Notes

Please call **Scott Vaterlaus** at 801-535-6630 to verify striping layout prior to painting.

NOTICE REQUIRED AT LEAST 2 DAYS PRIOR TO INSTALLATION.

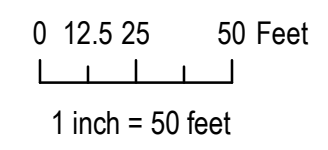
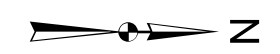
All dimensions from curb face.

Sign and bicycle symbol locations will be reviewed by Salt Lake City Transportation Division staff after striping is complete. Please schedule at least 2 business days prior to installation.

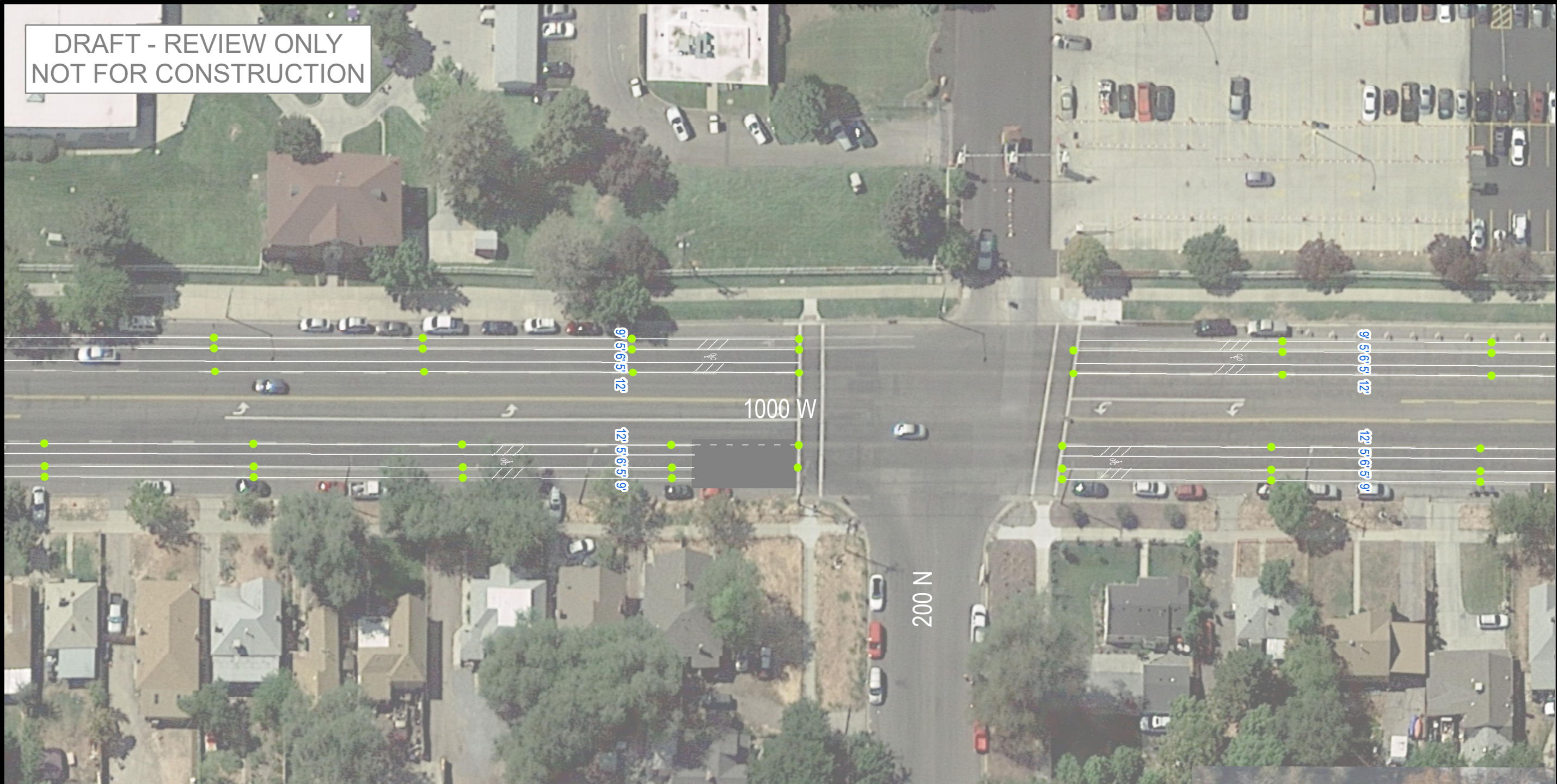
Layout Notes


All dimensions from curb face.
Tab points shown with green dot.
General striping layout approach: convert outside travel lane to buffered bike lane

Version A
Buffered Bike Lanes
within Existing Striping



DRAFT - REVIEW ONLY
NOT FOR CONSTRUCTION



PREPARED BY:

SALT LAKE CITY CORPORATION
 COMMUNITY AND NEIGHBORHOODS
 DIVISION of TRANSPORTATION
 349 SOUTH 200 EAST, SUITE 150 SALT LAKE CITY, UTAH 84111-5502
 TELEPHONE: 801-535-6630
 FAX: 801-535-6919
 E-MAIL: WWW.SLCCGOV.COM

PROFESSIONAL SEAL:

PROJECT IDENTIFICATION:
 1000 W- North Temple to 600 N Street Improvements
 Date: 6/2/2021

PROJECT OWNER:
SALT LAKE CITY CORPORATION
 451 SOUTH STATE STREET
 SALT LAKE CITY, UTAH 84111-2836
 WWW.SLCCGOV.COM

| REV | DATE | DESCRIPTION |
|-----|------|-------------|
| | | |
| | | |
| | | |
| | | |

ENG. JOB #:
 P.U. JOB # **N/A**
 FAS NO.:
 PREPARED BY: **SLC CORP.**
 DRAWING FILE NAME:
 DRAWN BY:
 CHECKED BY:

SHEET TITLE:

Striping Plan

SHEET IDENTIFIER:

Sheet 2/7

BINDING ORDER

General Sheet Notes

Please call **Scott Vaterlaus** at 801-535-6630 to verify striping layout prior to painting.

NOTICE REQUIRED AT LEAST 2 DAYS PRIOR TO INSTALLATION.

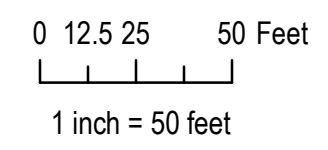
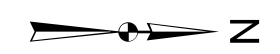
All dimensions from curb face.

Sign and bicycle symbol locations will be reviewed by Salt Lake City Transportation Division staff after striping is complete. Please schedule at least 2 business days prior to installation.

Layout Notes

All dimensions from curb face.
 Tab points shown with green dot.
 General striping layout approach: convert outside travel lane to buffered bike lane

Version A
Buffered Bike Lanes
within Existing Striping



DRAFT - REVIEW ONLY
NOT FOR CONSTRUCTION



General Sheet Notes

Please call **Scott Vaterlaus** at 801-535-6630 to verify striping layout prior to painting.

NOTICE REQUIRED AT LEAST 2 DAYS PRIOR TO INSTALLATION.

All dimensions from curb face.

Sign and bicycle symbol locations will be reviewed by Salt Lake City Transportation Division staff after striping is complete. Please schedule at least 2 business days prior to installation.

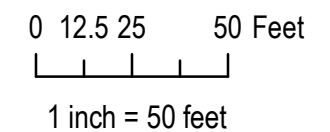
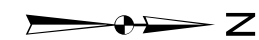
Layout Notes

All dimensions from curb face.

Tab points shown with green dot.

General striping layout approach: convert outside travel lane to buffered bike lane

Version A
Buffered Bike Lanes
within Existing Striping



PREPARED BY:



SALT LAKE CITY CORPORATION

COMMUNITY AND NEIGHBORHOODS

DIVISION of TRANSPORTATION

349 SOUTH 200 EAST, SUITE 150 SALT LAKE CITY, UTAH 84111-5502
TELEPHONE: 801-535-6630
FAX: 801-535-6919
E-MAIL: WWW.SLCGOV.COM

PROFESSIONAL SEAL:

PROJECT IDENTIFICATION:

1000 W- North Temple to 600 N Street Improvements

Date: 6/2/2021

PROJECT OWNER:

SALT LAKE CITY CORPORATION

451 SOUTH STATE STREET
SALT LAKE CITY, UTAH 84111-2836
WWW.SLCGOV.COM

| REV | DATE | DESCRIPTION |
|-----|------|-------------|
| | | |
| | | |
| | | |
| | | |

ENG. JOB #: P.U. JOB # **N/A**
FAS NO.:
PREPARED BY: **S.L.C. CORP.**
DRAWING FILE NAME:
DRAWN BY:
CHECKED BY:

SHEET TITLE:

Striping Plan

SHEET IDENTIFIER:

Sheet 3/7

BINDING ORDER

DRAFT - REVIEW ONLY
NOT FOR CONSTRUCTION



General Sheet Notes

Please call **Scott Vaterlaus** at 801-535-6630 to verify striping layout prior to painting.

NOTICE REQUIRED AT LEAST 2 DAYS PRIOR TO INSTALLATION.

All dimensions from curb face.

Sign and bicycle symbol locations will be reviewed by Salt Lake City Transportation Division staff after striping is complete. Please schedule at least 2 business days prior to installation.

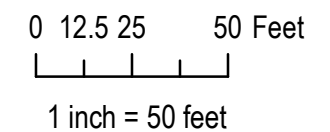
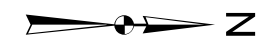
Layout Notes

All dimensions from curb face.


Tab points shown with green dot.

General striping layout approach: convert outside travel lane to buffered bike lane

Version A
Buffered Bike Lanes
within Existing Striping



PREPARED BY:



SALT LAKE CITY CORPORATION
COMMUNITY AND NEIGHBORHOODS
DIVISION of TRANSPORTATION
349 SOUTH 200 EAST, SUITE 150 SALT LAKE CITY, UTAH 84111-5502
TELEPHONE: 801-535-6630
FAX: 801-535-6019
E-MAIL: WWW.SLCOV.COM

PROFESSIONAL SEAL:

PROJECT IDENTIFICATION:

1000 W-
North Temple
to 600 N
Street
Improvements

Date: 6/2/2021

PROJECT OWNER:

SALT LAKE CITY CORPORATION
451 SOUTH STATE STREET
SALT LAKE CITY, UTAH 84111-2836
WWW.SLCOV.COM

| REV | DATE | DESCRIPTION |
|-----|------|-------------|
| | | |
| | | |
| | | |
| | | |

ENG. JOB #: _____
P.U. JOB #: **N/A**
FAS NO.: _____
PREPARED BY: **SLC CORP.**
DRAWING FILE NAME: _____
DRAWN BY: _____
CHECKED BY: _____

SHEET TITLE:

Striping Plan

SHEET IDENTIFIER:

Sheet 4/7

BINDING ORDER

DRAFT - REVIEW ONLY
NOT FOR CONSTRUCTION



Crosswalks striping has been added to this intersection.

General Sheet Notes

Please call Scott Vaterlaus at 801-535-6630 to verify striping layout prior to painting.

NOTICE REQUIRED AT LEAST 2 DAYS PRIOR TO INSTALLATION.

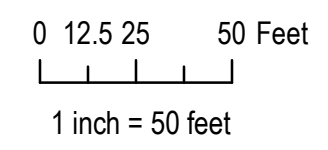
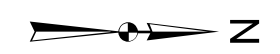
All dimensions from curb face.

Sign and bicycle symbol locations will be reviewed by Salt Lake City Transportation Division staff after striping is complete. Please schedule at least 2 business days prior to installation.

Layout Notes

All dimensions from curb face.
Tab points shown with green dot.
General striping layout approach: convert outside travel lane to buffered bike lane

Version A
Buffered Bike Lanes
within Existing Striping



PREPARED BY:



SALT LAKE CITY CORPORATION
COMMUNITY AND NEIGHBORHOODS
DIVISION of TRANSPORTATION
349 SOUTH 200 EAST, SUITE 150 SALT LAKE CITY, UTAH 84111-5502
TELEPHONE: 801-535-6630
FAX: 801-535-6919
E-MAIL: WWW.SLCCGOV.COM

PROFESSIONAL SEAL:

PROJECT IDENTIFICATION:

1000 W- North Temple to 600 N Street Improvements
Date: 6/2/2021

PROJECT OWNER:

SALT LAKE CITY CORPORATION
451 SOUTH STATE STREET
SALT LAKE CITY, UTAH 84111-2836
WWW.SLCCGOV.COM

| REV | DATE | DESCRIPTION |
|-----|------|-------------|
| | | |
| | | |
| | | |
| | | |

ENG JOB #: P.U. JOB # N/A
FAS NO.:
PREPARED BY: SLC CORP.
DRAWING FILE NAME:
DRAWN BY:
CHECKED BY:

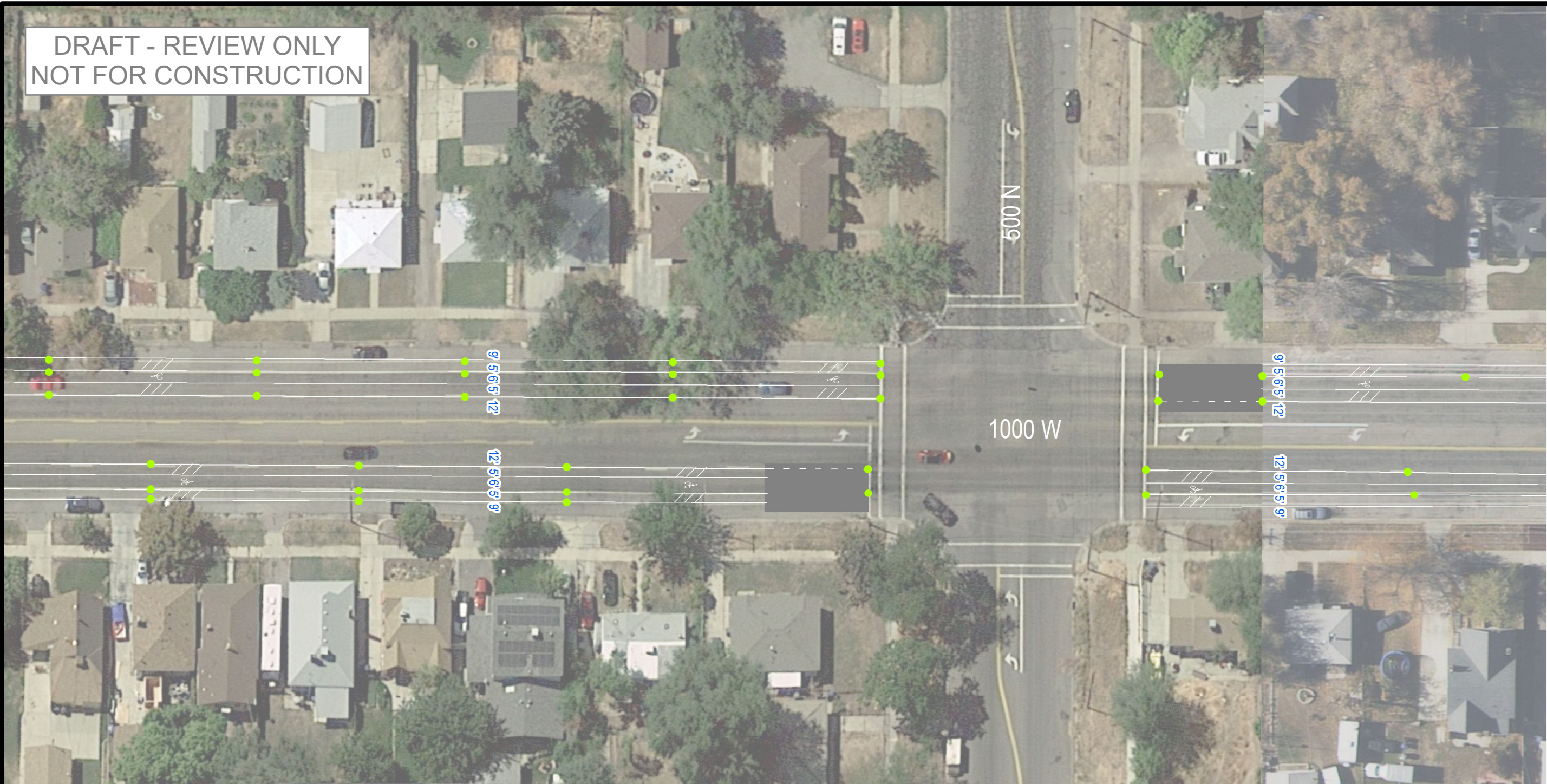
SHEET TITLE:

Striping Plan

SHEET IDENTIFIER:

Sheet 5/7
BINDING ORDER

DRAFT - REVIEW ONLY
NOT FOR CONSTRUCTION



PREPARED BY:

SALT LAKE CITY CORPORATION
 COMMUNITY AND NEIGHBORHOODS
 DIVISION of TRANSPORTATION
 349 SOUTH 200 EAST, SUITE 150 SALT LAKE CITY, UTAH 84111-5502
 TELEPHONE: 801-535-6630
 FAX: 801-535-6019
 E-MAIL: WWW.SLCCGOV.COM

PROFESSIONAL SEAL:
 PROJECT IDENTIFICATION:

1000 W- North Temple to 600 N Street Improvements
 Date: 6/2/2021
 PROJECT OWNER:

SALT LAKE CITY CORPORATION
 451 SOUTH STATE STREET
 SALT LAKE CITY, UTAH 84111-2836
 WWW.SLCCGOV.COM

| REV | DATE | DESCRIPTION |
|-----|------|-------------|
| | | |
| | | |
| | | |
| | | |

ENG. JOB #:
 P.U. JOB # **N/A**
 FAS NO.:
 PREPARER # **SLC CORP.**
 DRAWING FILE NAME:
 DRAWN BY:
 CHECKED BY:

SHEET TITLE:

Striping Plan

SHEET IDENTIFIER:

Sheet 6/7

BINDING ORDER

General Sheet Notes

Please call **Scott Vaterlaus** at 801-535-6630 to verify striping layout prior to painting.

NOTICE REQUIRED AT LEAST 2 DAYS PRIOR TO INSTALLATION.

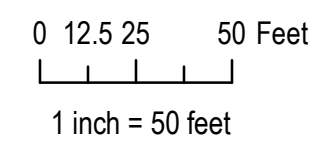
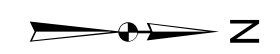
All dimensions from curb face.

Sign and bicycle symbol locations will be reviewed by Salt Lake City Transportation Division staff after striping is complete. Please schedule at least 2 business days prior to installation.

Layout Notes

All dimensions from curb face.
 Tab points shown with green dot.
 General striping layout approach: convert outside travel lane to buffered bike lane

Version A
Buffered Bike Lanes
within Existing Striping



DRAFT - REVIEW ONLY
NOT FOR CONSTRUCTION



General Sheet Notes

Please call Scott Vaterlaus at 801-535-6630 to verify striping layout prior to painting.

NOTICE REQUIRED AT LEAST 2 DAYS PRIOR TO INSTALLATION.

All dimensions from curb face.

Sign and bicycle symbol locations will be reviewed by Salt Lake City Transportation Division staff after striping is complete. Please schedule at least 2 business days prior to installation.

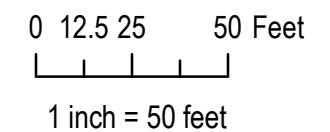
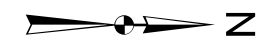
Layout Notes

All dimensions from curb face.

Tab points shown with green dot.

General striping layout approach: convert outside travel lane to buffered bike lane

Version A
Buffered Bike Lanes
within Existing Striping



PREPARED BY:



SALT LAKE CITY CORPORATION
COMMUNITY AND NEIGHBORHOODS

DIVISION of TRANSPORTATION
349 SOUTH 200 EAST, SUITE 150 SALT LAKE CITY, UTAH 84111-5502
TELEPHONE: 801-535-6630
FAX: 801-535-6919
E-MAIL: WWW.SLCCGOV.COM

PROFESSIONAL SEAL:

PROJECT IDENTIFICATION:

1000 W- North Temple to 600 N Street Improvements

Date: 6/2/2021

PROJECT OWNER:

SALT LAKE CITY CORPORATION

451 SOUTH STATE STREET
SALT LAKE CITY, UTAH 84111-2836
WWW.SLCCGOV.COM

| REV | DATE | DESCRIPTION |
|-----|------|-------------|
| | | |
| | | |
| | | |
| | | |
| | | |

ENG. JOB #: P.U. JOB # N/A
FAS NO.:
PREPARED BY: SLC CORP.
DRAWING FILE NAME:
DRAWN BY:
CHECKED BY:

SHEET TITLE:

Striping Plan

SHEET IDENTIFIER:

Sheet 7/7

BINDING ORDER