



1100 EAST RECONSTRUCTION PROJECT

900 South to Logan Avenue

1100 East Reconstruction

Meet the Contractor



385-743-8405



1100east@slcgov.com



www.slc.gov/mystreet/1100east



1100 EAST RECONSTRUCTION PROJECT

900 South to Logan Avenue

Project Overview

This project will reconstruct roadway pavement, sidewalks, and gutters; and provide safety improvements, traffic calming features, and bicycle lanes along the corridor.



385-743-8405



1100east@slcgov.com



www.slc.gov/mystreet/1100east

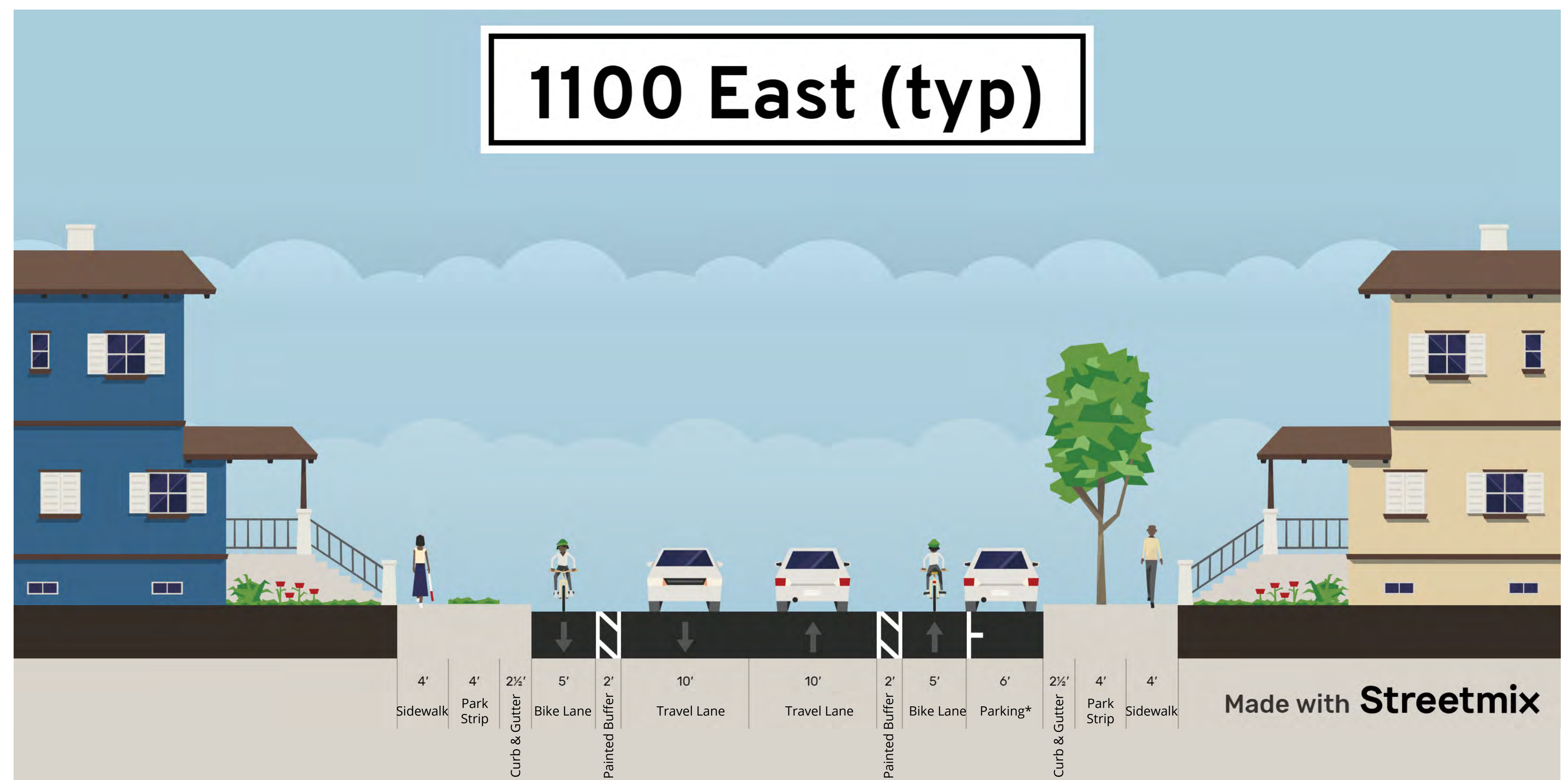


1100 EAST RECONSTRUCTION PROJECT

900 South to Logan Avenue

Improvements

- Intersection safety improvements:
 - Hybrid protected bike intersections
 - Bulb-outs
 - Raised intersection
- Buffered bike lanes



* Parking will switch from east and west side of the street.
See on-street parking reductions map.



385-743-8405



1100east@slcgov.com



www.slc.gov/mystreet/1100east



1100 EAST RECONSTRUCTION PROJECT

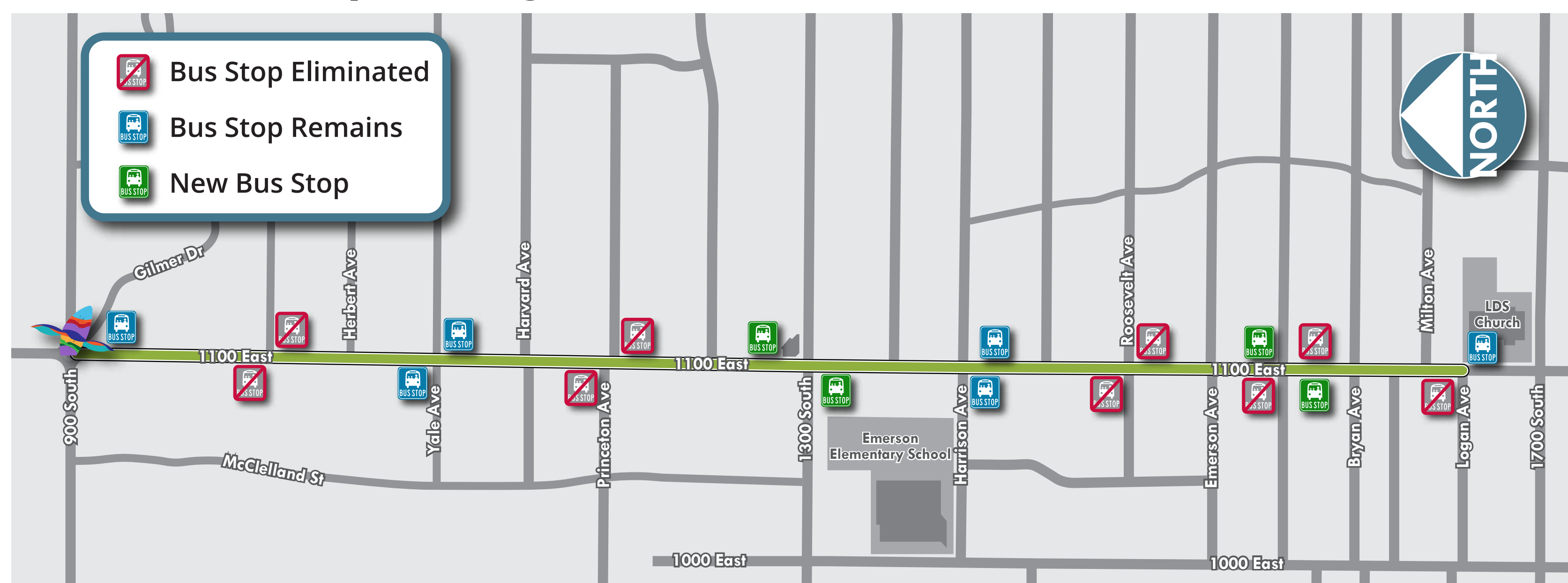
900 South to Logan Avenue

Project Impacts

On-street Parking Reductions



Bus Stop Adjustments



385-743-8405



1100east@slcgov.com



www.slc.gov/mystreet/1100east

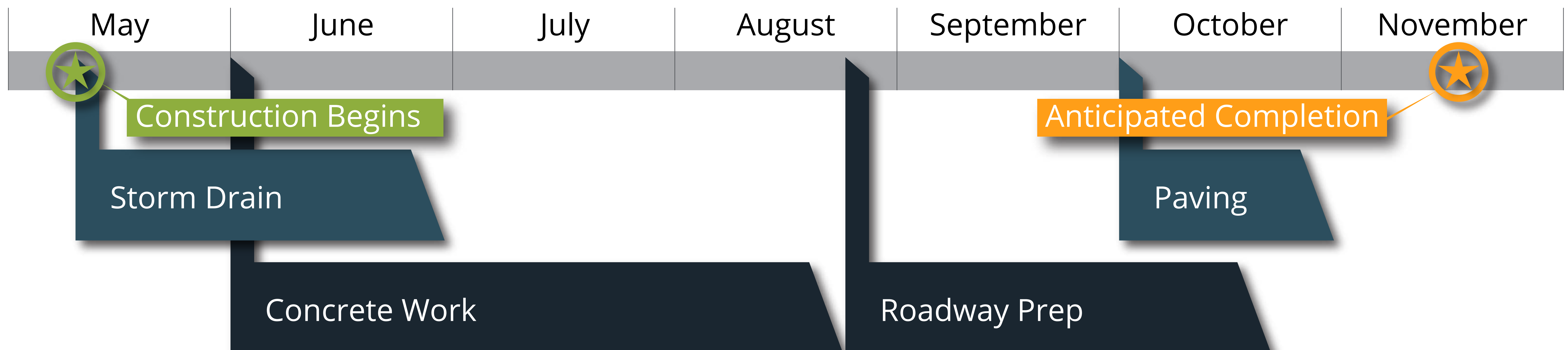


1100 EAST RECONSTRUCTION PROJECT

900 South to Logan Avenue

Schedule

- Traffic impacts on 1100 East will begin as early as mid-May.
- Crews will start work on the north end of the project and move south.



Construction schedules are subject to change due to weather or unforeseen circumstances.



385-743-8405



1100east@slcgov.com



www.slc.gov/mystreet/1100east



1100 EAST RECONSTRUCTION PROJECT

900 South to Logan Avenue

FUNDING OUR FUTURE

Streets Reconstruction Bond

On November 6, 2018, Salt Lake City voters approved the \$87 million Funding Our Future Streets Reconstruction Bond. This funding is allowing the City to address our most deteriorating streets and, when paired with new sales tax revenue for streets maintenance, enables us to prolong the life of our entire street network.

- The \$87 million in funding is issued as several smaller bonds
- When bond funding is issued to a street reconstruction project, the funds are required to be used within 3 years.

Major Streets Reconstruction Projects

Major streets are high-capacity urban streets that deliver traffic at the highest level of service possible. Projects also include consideration of complete street elements like pedestrian or bicycle paths.

The sections of **1100 East**, and **Highland Drive** that are under construction in 2023 are considered major streets.

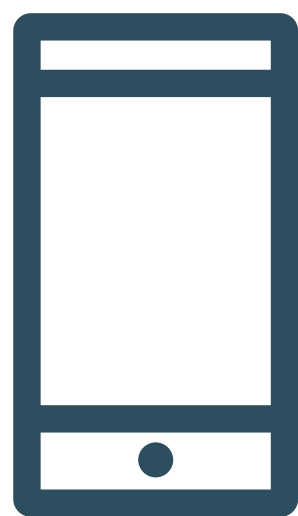
Learn more at
www.fundingourfutureslc.com/bond/



1100 EAST RECONSTRUCTION PROJECT

900 South to Logan Avenue

Questions? Contact the Project Information Team



Hotline:
385-743-8405



Email:
1100east@slcgov.com
Email "Updates" to subscribe to our project updates.



Website:
www.slc.gov/mystreet/1100east

Project Website





McClelland Trail and Neighborhood Street Livability Improvements

Traffic Calming

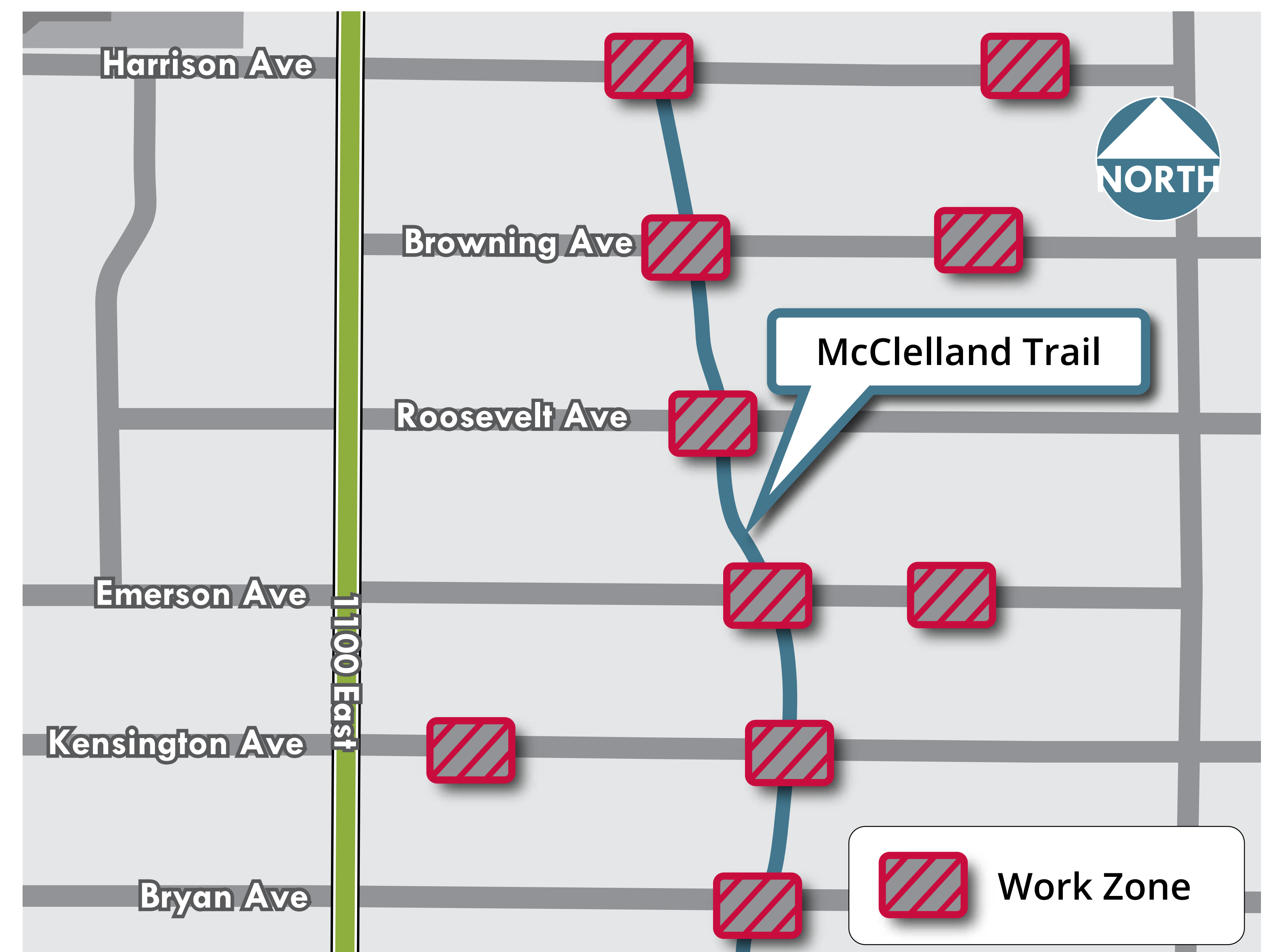
- Roadway narrowing at selected locations

Streetscape Improvements

- Landscaping included in some narrowings

Schedule

- Construction underway
- Anticipated completion mid-June



801-535-7995



Megan.Leether@slcgov.com



www.slc.gov/transportation/mcclelland-nsli/



1100 EAST RECONSTRUCTION PROJECT

900 South to Logan Avenue

Other Adjacent Projects

Project Contact Info

2

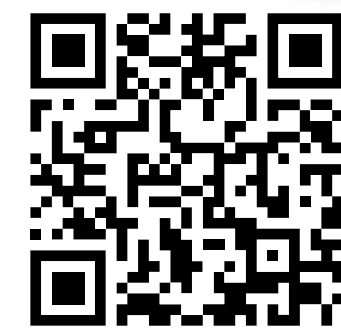
**Highland Drive;
Warnock Ave to Logan Ave**
888-556-0232
HighlandDr@slcgov.com
HighlandSLC.org



Project Contact Info

3

**2100 South Sewer Replacement;
Highland Drive to Yuma Street**
888-556-0232
2100SouthSewer@slcgov.com
slc.gov/utilities/projects/2100-south/



Project Contact Info

4

McClelland Shared Street
888-556-0232
McClellandStreet@slcgov.com
slc.gov/transportation/2020/08/18/
mcclelland-shared-street/



Project Contact Info

5

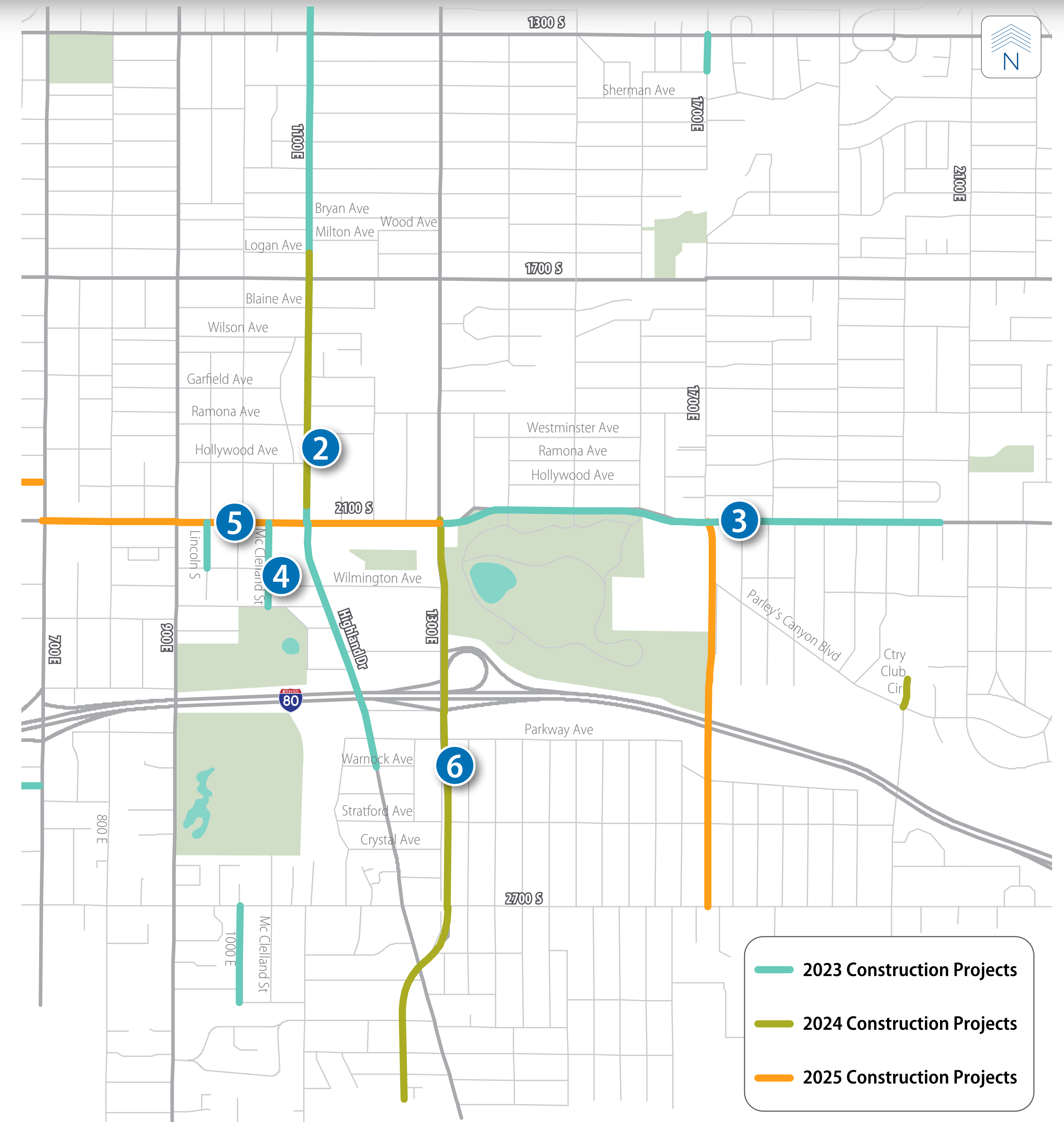
**2100 South;
700 East - 1300 East**
801-406-1868
2100SouthSLC@gmail.com
2100SouthSLC.org



Project Contact Info

6

**1300 East;
2100 South - 3300 South**
844-567-8839
info@1300eastslc.com
1300eastslc.com/



385-743-8405



1100east@slcgov.com

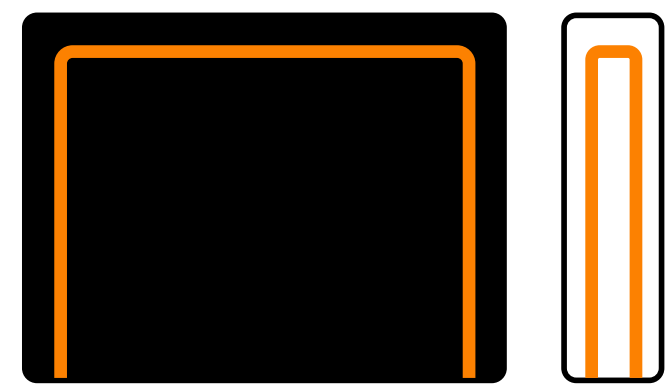


www.slc.gov/mystreet/1100east



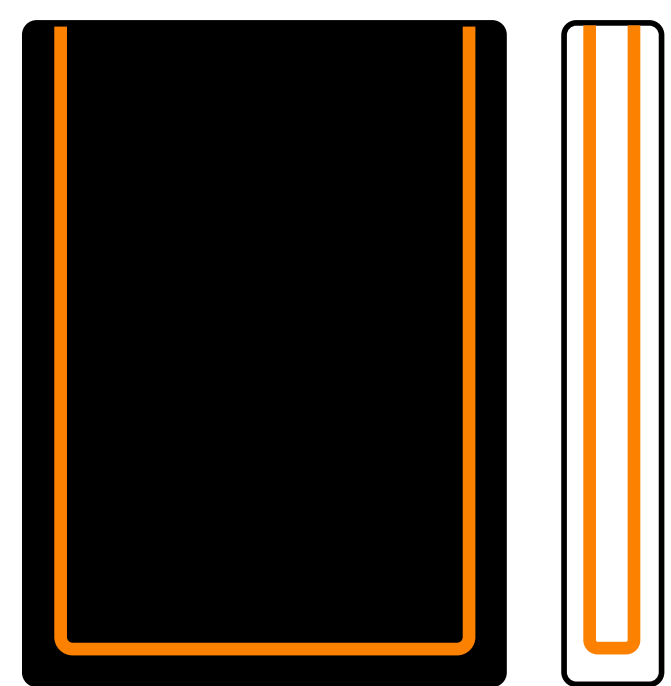
1100 EAST RECONSTRUCTION PROJECT

900 South to Logan Avenue



BECK

Construction & Excavation, Inc.



Est. 2013

Garen Beck

Owner

Has over 30 years of construction experience in residential, commercial, streets and highway work in both the public and private sectors.

Key Project Team Members

Kyle MacArthur, *Beck Project Manager*

James Beck, *Beck Superintendent*



385-743-8405



1100east@slcgov.com



www.slc.gov/mystreet/1100east