

liberty park

rotary play park

inclusive playground design

Rotary Play Park, Liberty Park's beloved regional playground for all ages and abilities, is getting a makeover after two decades of intensive use.

Using funding from the Reimagine Neighborhood Parks General Obligation, the aging equipment will be replaced with a new playground that can serve the Salt Lake City community for years to come.

Be among the first to preview the final design concept today!

Project background:

In summer 2023, we talked to families at the play park and surveyed hundreds of people online to learn what additions and improvements users wanted to see. Playground features that encourage exploration through imaginative play and obstacle courses were high on the preference survey as were a natural, open space concept, shade structures, drinking fountains, improved sightlines, and other safety features.

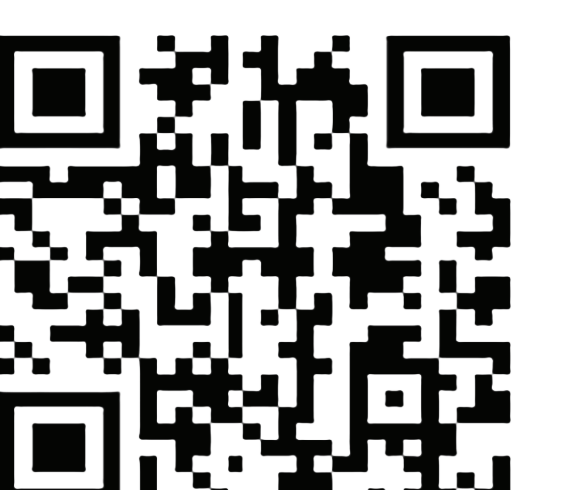
Using this feedback, the team created three design concepts for the playground and collected community feedback in-person and online through May 2024. This final concept is based on over 1700 survey responses, focus groups, in-person tabling, presentations and other conversations.

Final amenities and features directly reflect public preferences including a climbing tower, zipline, splash zone, sand tables, meadow maze, in-ground jumpers, swings, and slides.

Other requested items including rehabilitated bathrooms and more ADA parking are outside the budget for this project and will be incorporated into future funding requests.



For more project information and updates visit our project website here:
tinyurl.com/LibertyPlayground



What makes a playground inclusive for all ages and abilities?

Project Mission Statement

The Liberty Park Rotary Play Park playground should be **a distinctive regional play destination** that provides **a diverse range of learning and play experiences** which are **accessible and engaging for users of all ages and abilities**. The design process should take a holistic approach to play and learning, **seamlessly integrating the elements, beauty and lessons of nature with innovative, playful and inclusive design features** and ultimately stand as a new paradigm for inclusive play design that is **grounded in a natural landscape**.

Guiding Principles

- 1. Universal Accessibility:** Design a variety of both natural elements and constructed spaces that ensure all users, regardless of age or ability, can engage and safely play and learn. This includes mobility device-accessible pathways, sensory-friendly areas, and equipment suited for varying levels of physical ability.
- 2. Holistic Play and Learning:** Incorporate natural materials and elements that are rooted in the natural context of Liberty Park and the surrounding Salt Lake Valley ecosystems, creating opportunities for exploration, discovery, and environmental education. This playground should bring natural ecologies to the heart of the city and to those who may not be able to otherwise access them. Integrate garden spaces, water, and natural materials to encourage exploration and engagement with nature.
- 3. Risk-Based Play and Challenges:** Provide opportunities for risk-based play that encourages users of all abilities to test their limits, build confidence, and develop problem-solving skills. Design challenges that are scalable and adaptable, allowing everyone to experience the satisfaction of overcoming obstacles suited to their unique level of ability.
- 4. Neurodivergent and Sensory Considerations:** Ensure the playground is welcoming and engaging for neurodivergent individuals and those with sensory sensitivities. Include quiet zones, sensory gardens, and activities that cater to different sensory preferences and needs.
- 5. Community and Social Interaction:** Foster a sense of community by creating spaces that encourage social interaction and cooperative play among users of all ages, sizes and abilities. Design inclusive gathering areas and interactive elements that promote shared experiences and connections.
- 6. Celebration of Differences:** Create an environment that celebrates diversity and promotes understanding. Incorporate inclusion-based educational elements and activities that highlight the value of our differences and teach respect and empathy.
- 7. Support for Families and Caregivers:** Design the playground to be family and group-friendly and accommodating to caregivers, with features such as comfortable seating, shaded areas, small group outdoor classroom spaces, and clear sightlines for easy supervision. Provide resources and information to assist families in supporting the diverse needs of their children.
- 8. Sustainability and Stewardship:** Embrace sustainable practices in the design, construction, and maintenance of the playground. Reuse existing elements where possible, protect and enhance growing conditions for existing trees. New elements should utilize eco-friendly materials, support local wildlife, and inspire care for the natural environment.

ADAPTIVE INTERPRETIVE ELEMENTS



External device static protection
(cochlear implants, T1 devices, etc)



Braille incorporation



ASL incorporation



Enhanced features for individuals with
impaired vision



Enhanced features for individuals with
impaired hearing



Enhanced features for individuals with
impaired language



Accommodations for individuals with heat
sensitivity

PHYSICAL ACCESS



Mobility-device-accessible



Body support assistance



Caregiver accommodations

PROPRIOCEPTION AND CENTRAL NERVOUS SYSTEM STIMULATION



Gross motor activity(s)



Rhythmic motion



Spinning motion



Balance element(s)

INCLUSIVE SKILL BUILDING



Intergenerational play



Fine motor activity(s)



Pretend play



Creative play



Competitive play



Risky play



Inclusion-based learning



Space(s) for reduced sensory stimulation

imagine...

Walk, roll or ride
your way through an
imaginary day at the
new Rotary Play Park!

start here

1 The Gathering Zone

Welcome!

- Information and learning boards for non-verbal communication, play transition assistance
- Ancestral exploration garden
- Living gateway trellis arch

2 The Chill Zone

Take time to get settled.

- Picnic areas sized for small groups or larger parties
- A new west access route to connect to the Liberty Park perimeter road.

3 The Challenge Zone

Whoa.

- In-ground roll-on bouncers with room for friends
- Fire tower climbing structure with nets, ramps, embankment slide, overlook and spiral slide tower
- River rapid-themed play mounds
- Accessible group carousel

4 The Refresh Zone

Cool off!

- Four season play plaza with year-round shade and lighting
- Summertime splashpad with reduced flow popjet, hoop and mist features
- Miniature stone "islands" of the Great Salt Lake

5 The Game Zone

The game is on.

- Flexible game zone
- Ping pong table or bocce court
- Play mounds
- Two-sided gathering benches

6 The Thrill Zone

Whoa! Zip, fly, swing and soar to your heart's content. The existing swing bay will include new accessible and shared use swings, and a new zipline features a nest-type swing for paired use or to cradle those needing full-body support.

7 The Discovery Zone

Take a break, make music or learn something new.

- Fenced four-season learning landscape
- Discovery rooms with mirror maze and music zones
- Community classroom and performance area

8 The Build Zone

Create, dismantle and create again.

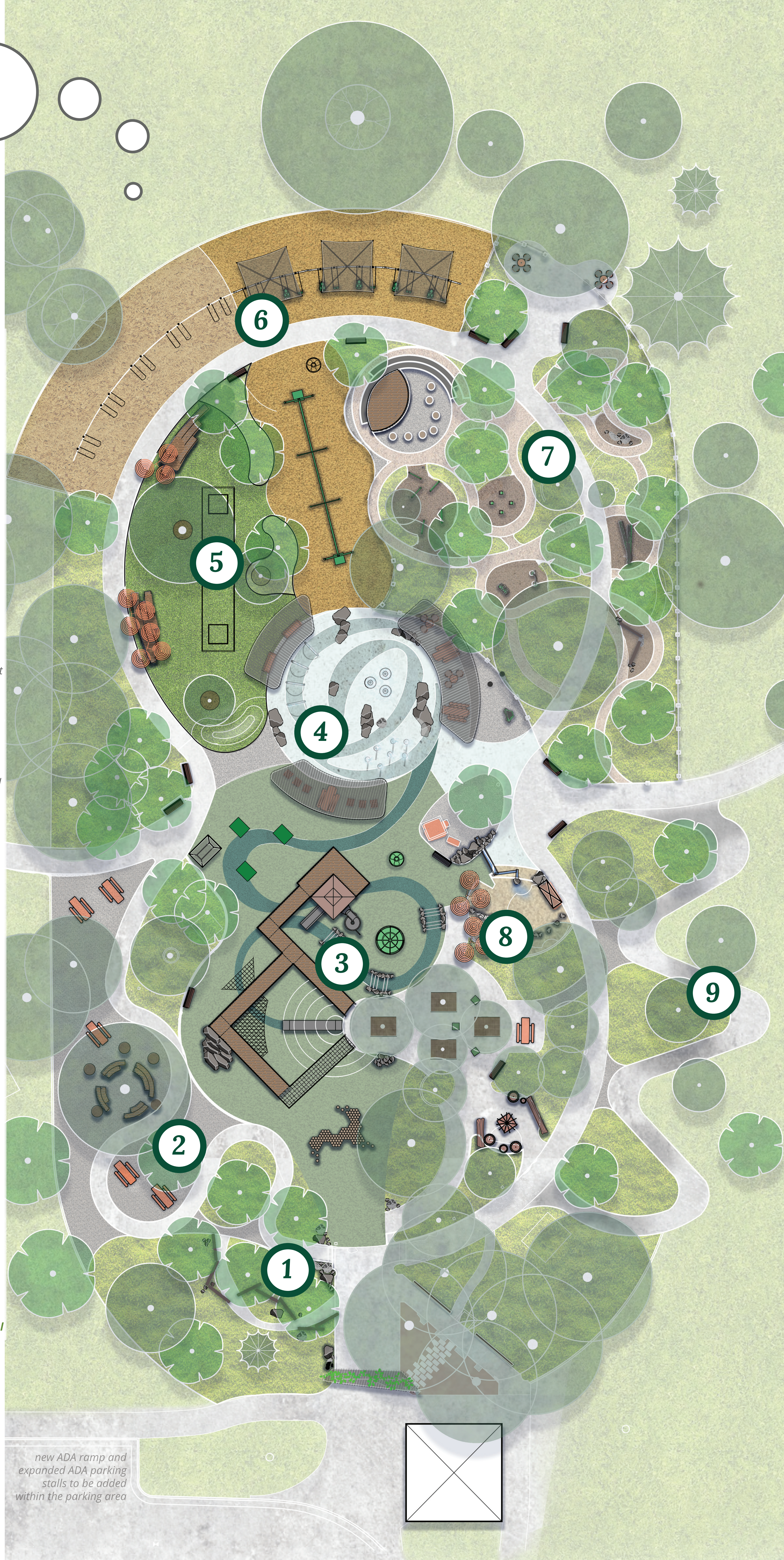
- Integrated wheelchair accessible water and sand tables
- Accessible market stall-style play table
- Loose material building area
- Shade coverings and caretaker seating

9 The Adventure Zone

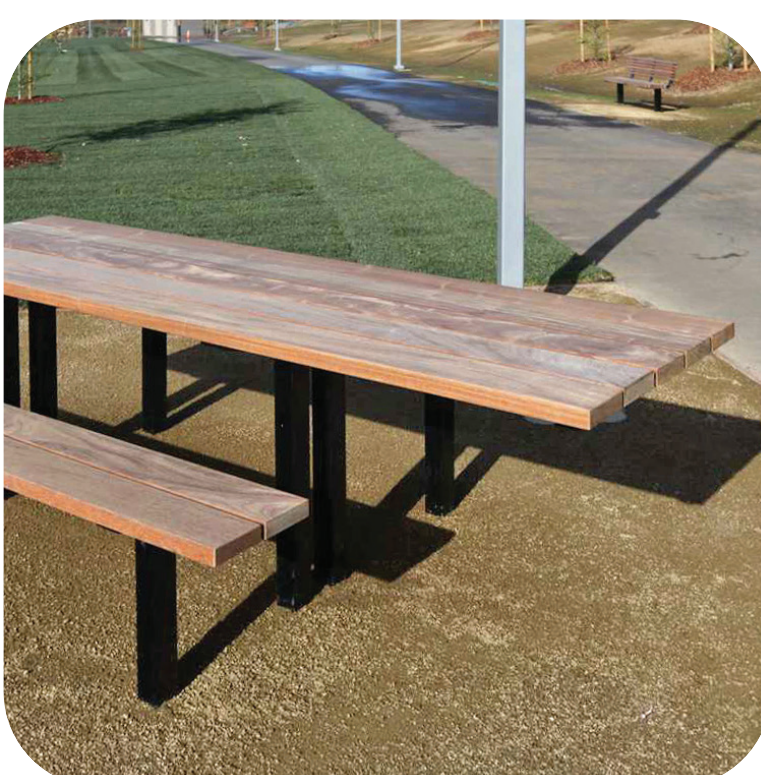
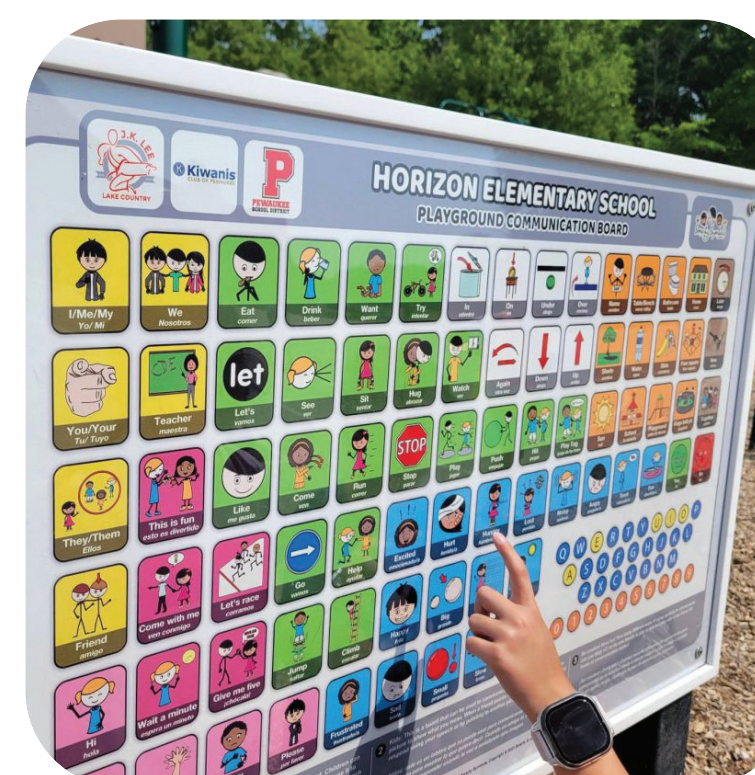
Speed up or slow down, it's time to stimulate your central nervous system.

- The concrete pump track for wheeling, running, riding or strolling across twists and turns and bumps and jumps
- Meadow garden blends the play park natural landscapes with the lawn of Liberty Park.

come back soon!



new ADA ramp and
expanded ADA parking
stalls to be added
within the parking area

[illegible]

The Game Zone



Flexible bocce/
cornhole game zone

Terraced gathering
benches

Synthetic turf lawn
and play mounds

Shaded swing seating with
full body support

Dry-season play plaza and
summertime splashpad
with lake islands thematic details

Multi-height mist features
with integrated solar lighting
and accessible control

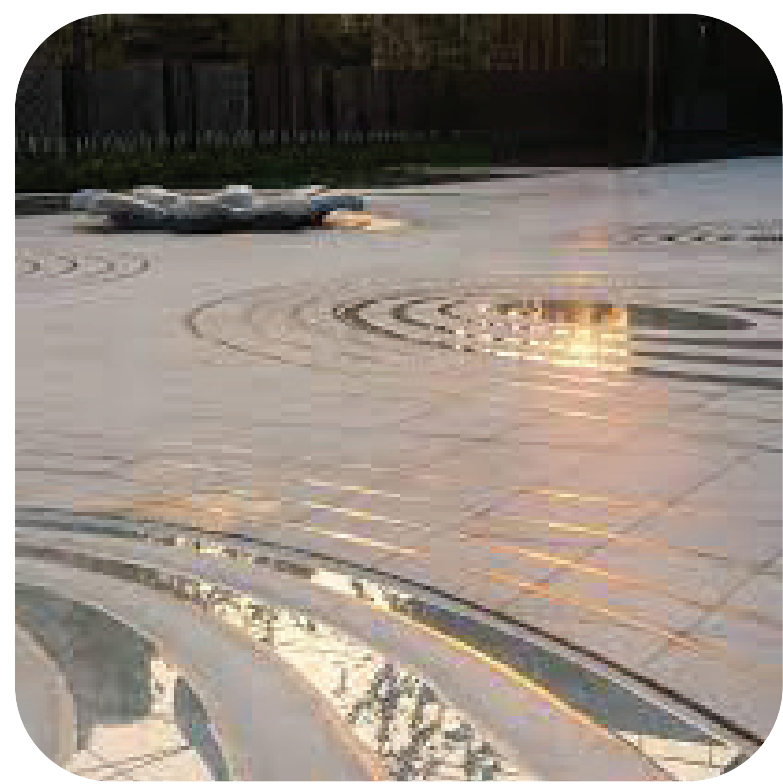
The Thrill Zone



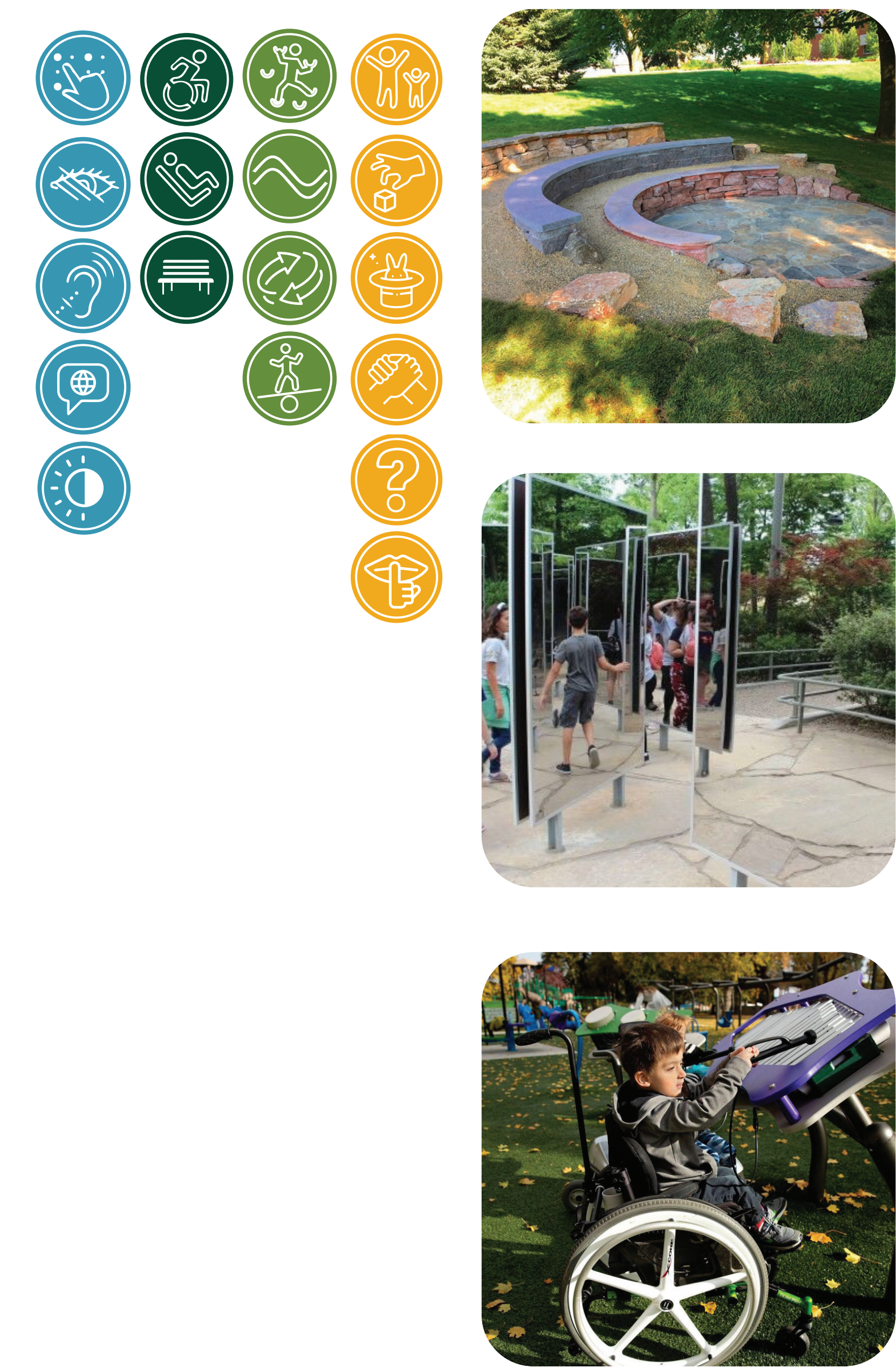
Inclusive swing bay
(ADA, toddler, nest, duo-
swings and overhead
shade canopies added
to the existing structure)

Supported zipline

The Refresh Zone



The Discovery Zone



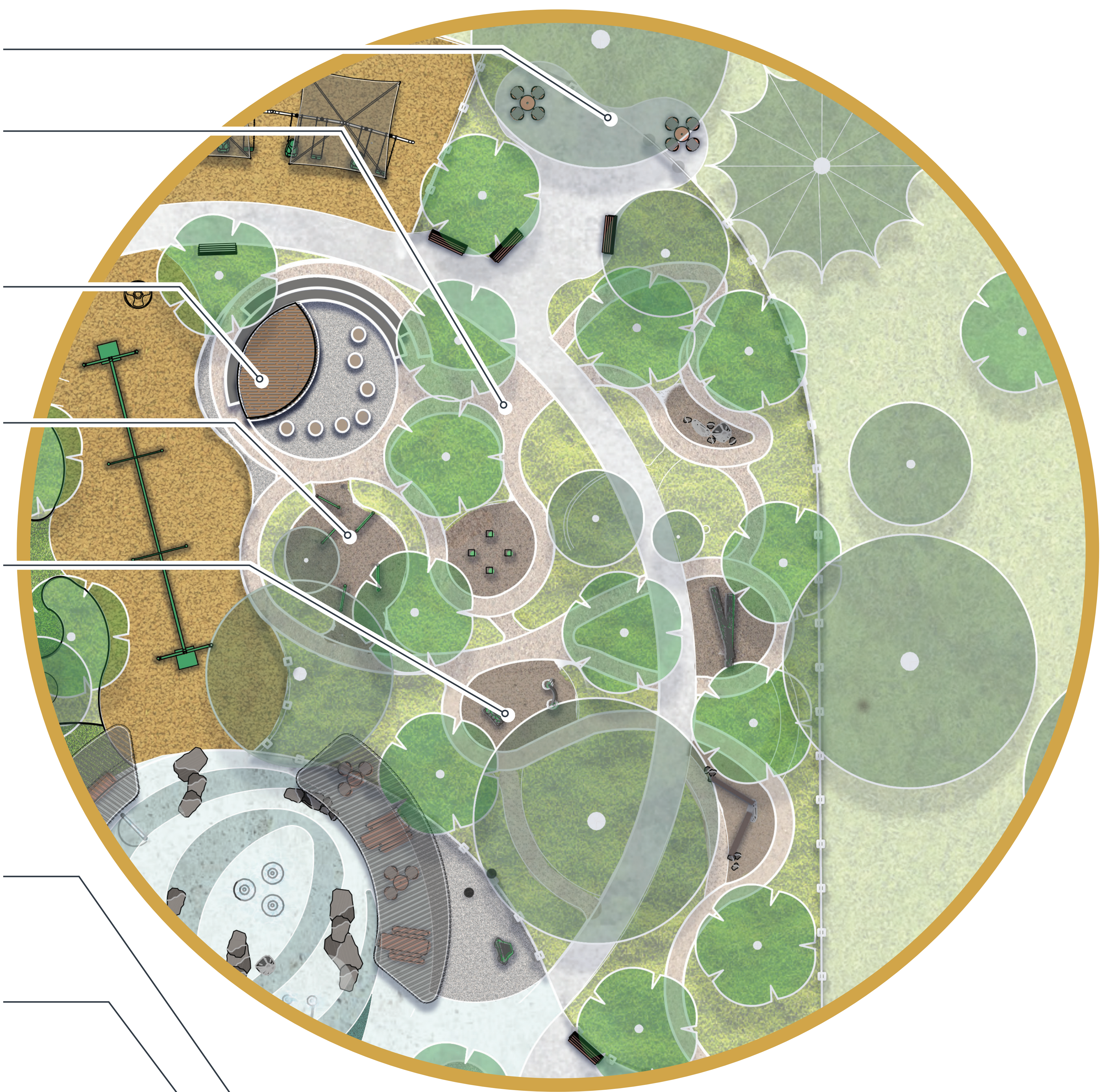
North entry point

'Meadow Maze' pathway

Accessible community storytime room

Mirror play panel garden

Sensory sound gardens with supported seating areas



The Build Zone



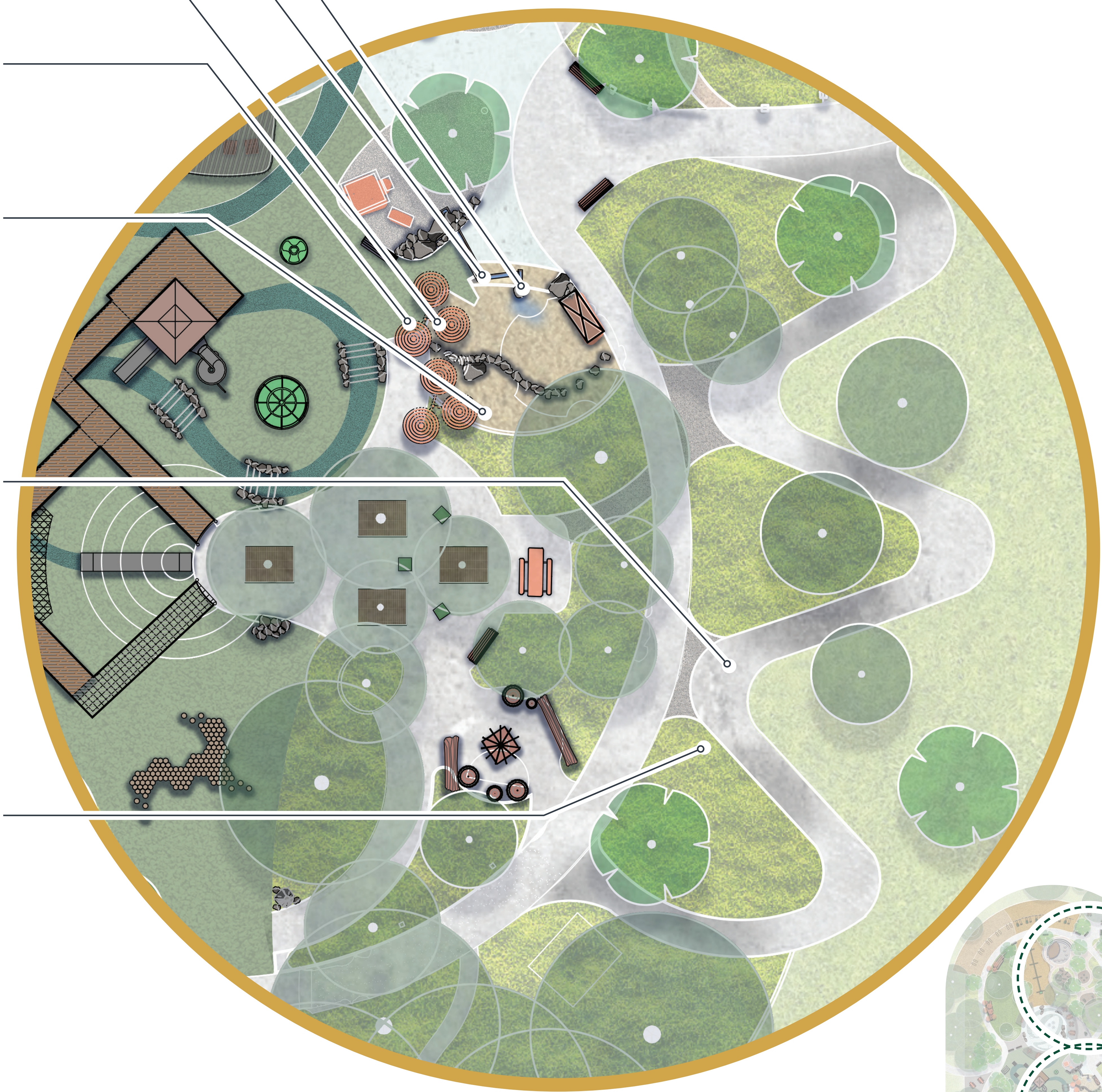
Accessible water sluice and sand table

Accessible water pump

Shaded and accessible market stand play table

Shade structure with integrated seating

Natural materials construction area



'Wiggle walk' wheels course wheelchair and caregiver accessible

Tall grass meadow garden

The Adventure Zone

