



**PUBLIC  
LANDS**



# Donner Trail Park

ROUND 2 ENGAGEMENT REPORT | November 2024





# Project Background

Located in the East Bench neighborhood in District 6, Donner Trail Park was selected for improvements funded by the following sources:

- Parks, Trails, & Open Space General Obligation (GO) Bond
- CIP funding a Memorial Tree Grove
- GO Bond Art Allocation.

In the summer of 2023, staff gathered public input during the first round of engagement to understand how the park is currently used and what improvements are desired. Based on this input, a proposed design was created. SLC Public Lands conducted a second round of public input, the results of which are summarized in this report, to refine the final design for the park.



# Who participated?

## Dates

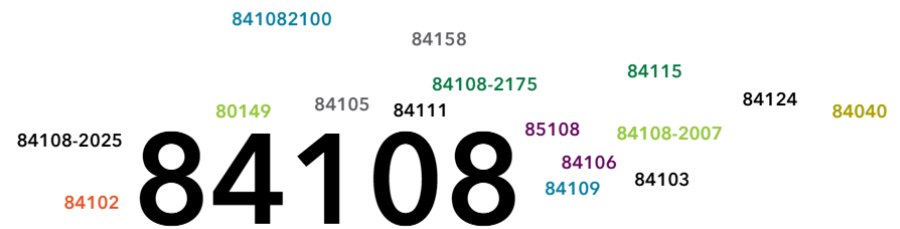
October 11 – November 4, 2024

## Participation

- 233 online survey submissions
- 165 comments collected at in-person events
- Approximately 200 people engaged in events

## Stakeholders

- East Bench Community Council
- Households within a 1-mile radius of the park
- Indian Hills Elementary School



*The majority (203) of respondents indicated their zip code is 84108*



# How was information shared?

## Canvassed

- 650 mailers sent to households within a 1-mile radius of the park
- Placed yard signs and a banner in the park

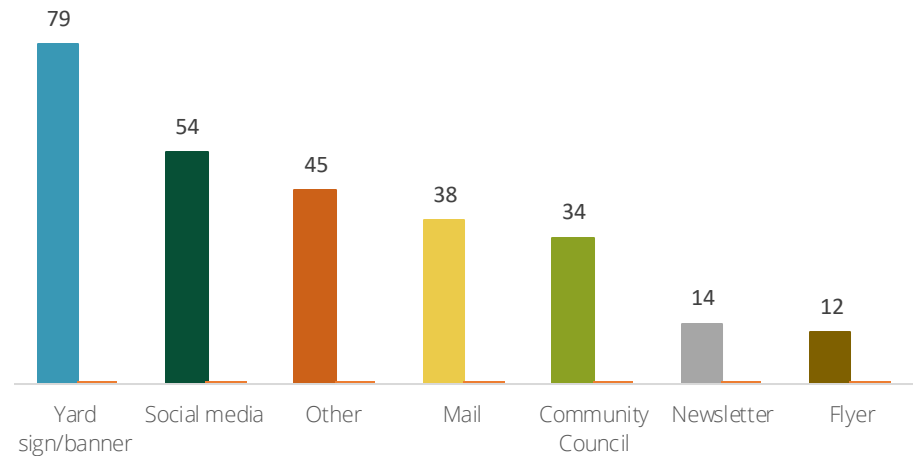
## Online Promotion

- Facebook/Instagram posts

## Community Outreach

- Sustainability Fair at Indian Hill Elementary  
October 12, 2024
- East Bench Community Council  
October 16, 2024
- Chat with staff at Donner Trail Park  
October 23, 2024
- Community Meeting  
November 20, 2024

## How did you learn about this project?



*Most responses to "other" indicated they found out by word of mouth, walking by the park, or by an email sent from the City.*





# Proposed Amenity Features



1 Park Bench



2 Picnic Table



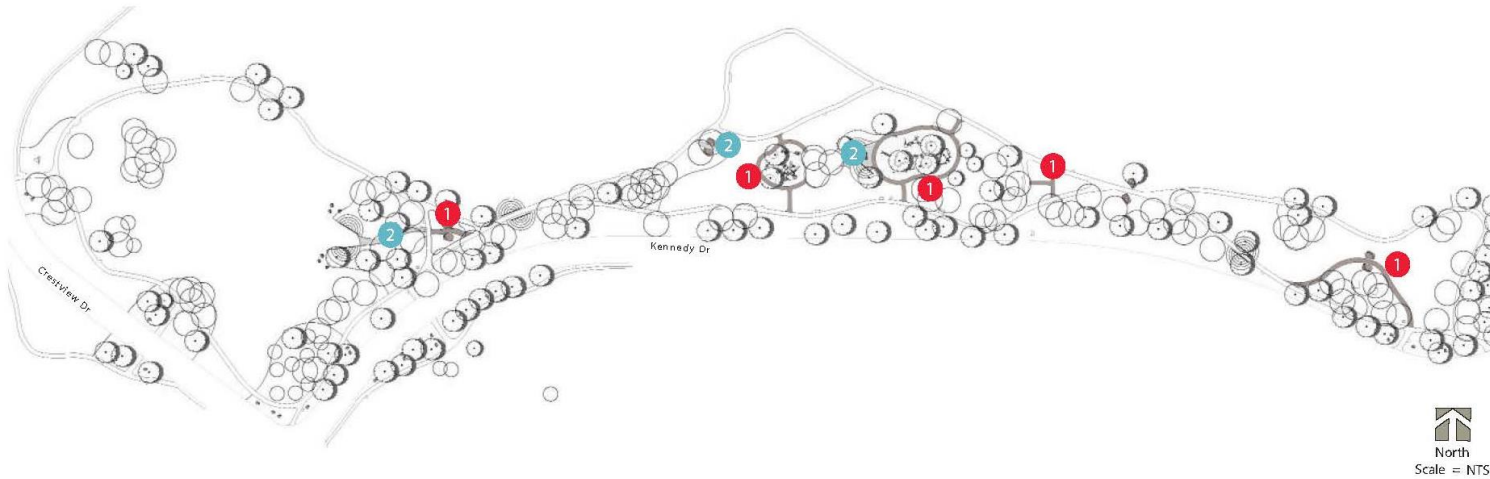
3 Bike Rack



4 Signage



# Proposed Pathway Features



**1 Concrete Exposed Aggregate**  
(ADA Compliant)



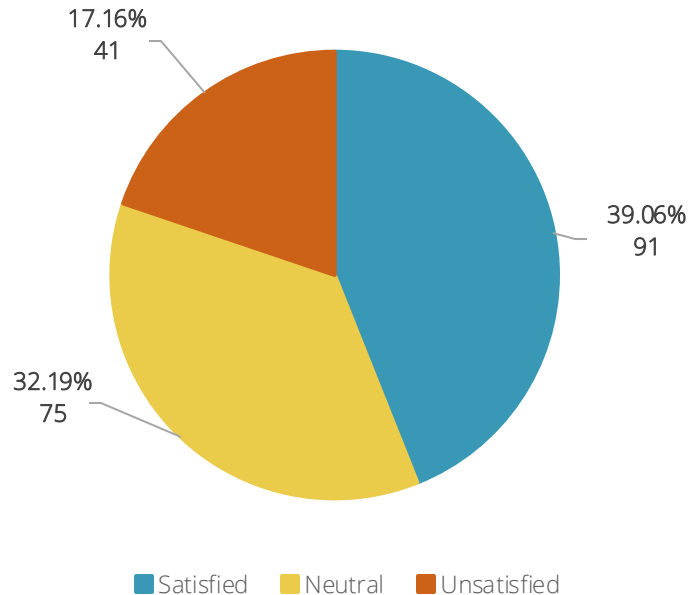
**2 Stone Dust**



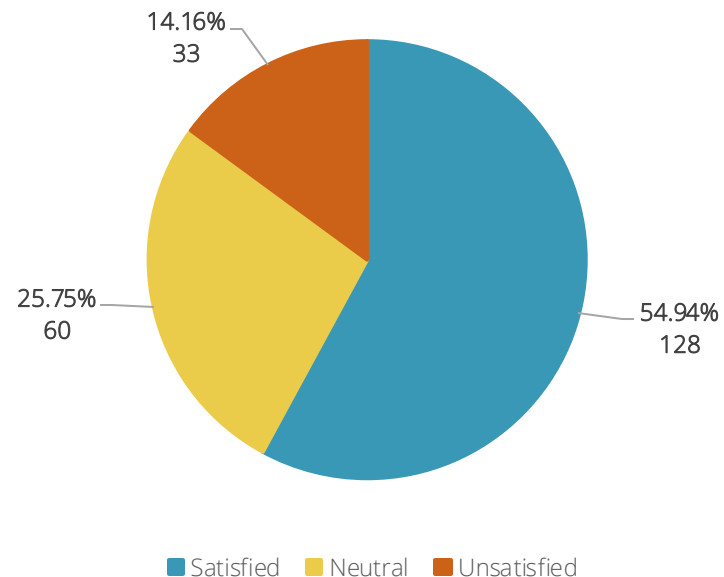
# Amenity & Pathway Survey Results

## Survey Results

How satisfied are you with the proposed amenities?



How satisfied are you with the proposed pathway accessibility in the park?



# Amenity & Pathway Comments

## Open Comments

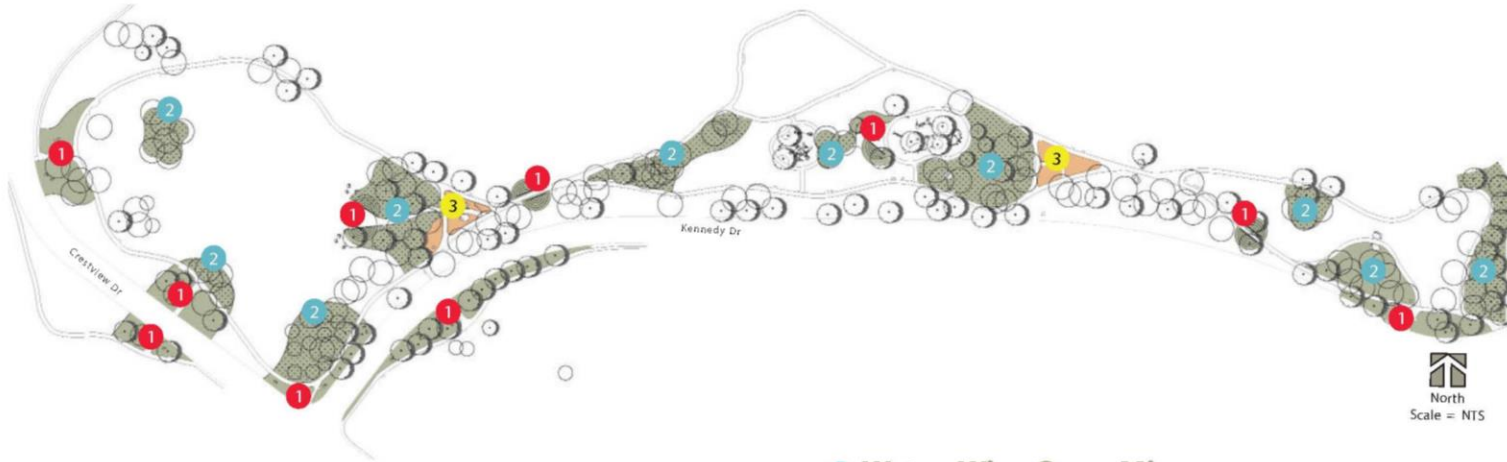
- The ranking of additional amenities from most votes received to least are: an updated drinking fountain (with many respondents specifically requesting a dog bowl), improved lighting, more picnic tables, pavilion, more benches, more trash bins, additional bike racks, grill stations, mile markers, and fencing.
- Other frequent requests were for dog bag dispensers, and a restroom.
- There was expressed concern about the added maintenance of crushed gravel pathways.

## How will feedback be addressed?

- Added pathways will be made of a hard surface such as concrete or asphalt.
- Other suggested amenities will be added as budget allows with the priority going toward updated drinking fountains, dog bag dispensers, replacement of failing lights, adding more picnic tables and benches, and additional trash bins.
- Restrooms and pavilions are likely unfeasible with the funding available.



# Proposed Landscaping



## 1 Water-Wise Plantings



## 2 Water-Wise Grass Mix



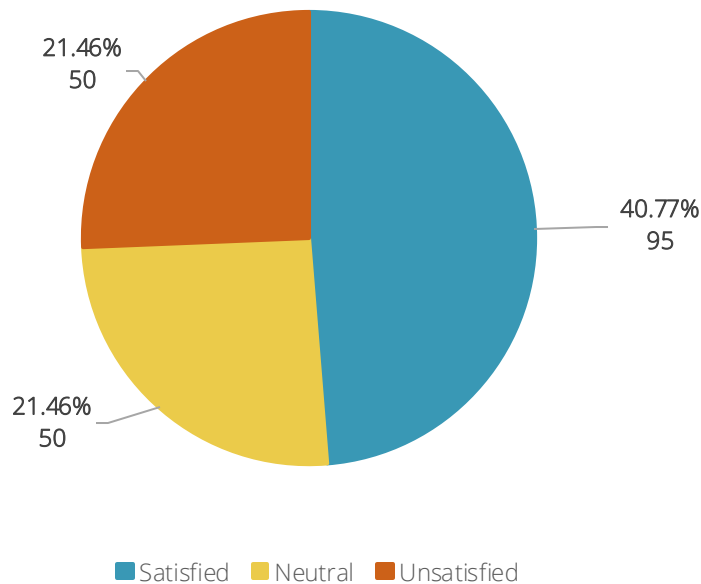
## 3 Butterfly-Pollinator Garden



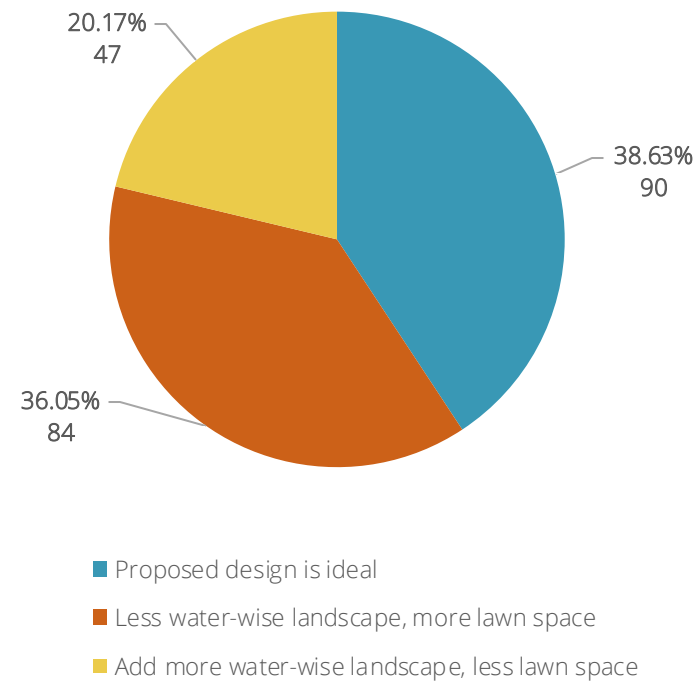
# Landscaping Survey Results

## Survey Results

How satisfied are you with the proposed landscape changes?



Do you prefer more or less lawn space in the landscape design?



# Landscaping Comments

## Open Comments

- Respondents noted that some of the proposed planting areas may impede their current use of the spaces the park (such as for sledding and open play).
- Comments expressed concern about the long-term care and maintenance of these spaces.
- Butterfly/pollinator gardens were not popular.

## How will feedback be addressed?

- The locations of the water-wise landscaping will be adjusted to perimeters where there is little foot traffic and play opportunities.
- Pollinator/butterfly gardens will be removed.
- Benefits of native plants:
  - Lower maintenance needs – Native plants adapt to the local climate and soil, requiring less intensive upkeep over time and after an establishment period compared to non-native species.
  - Resource efficiency - Native plants require less water, fertilizers, and pesticides to thrive.



# Proposed Playground Themes



**option 1** - nature playground



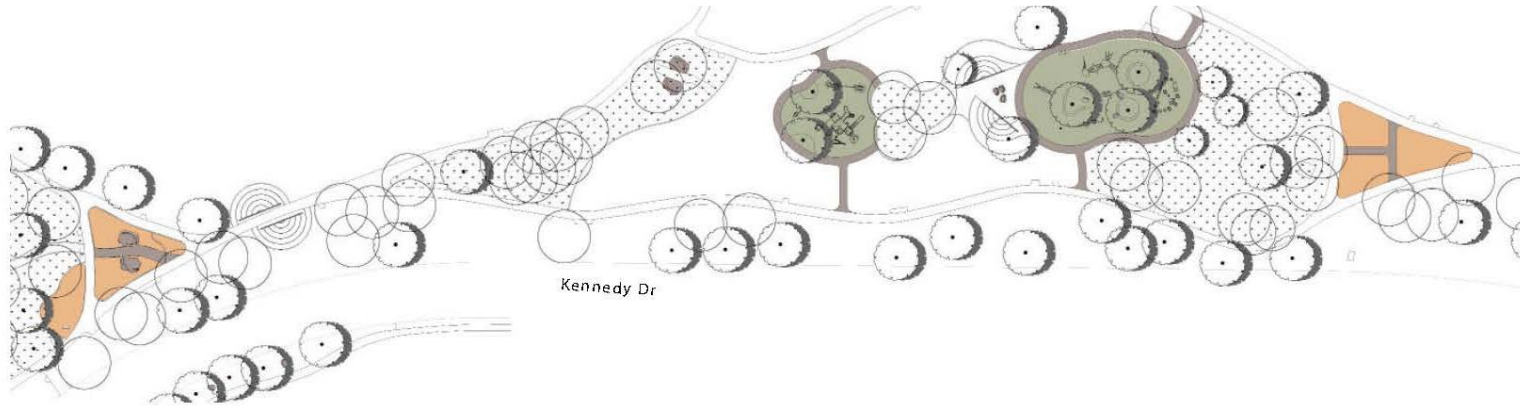
**option 2** - futuristic playground



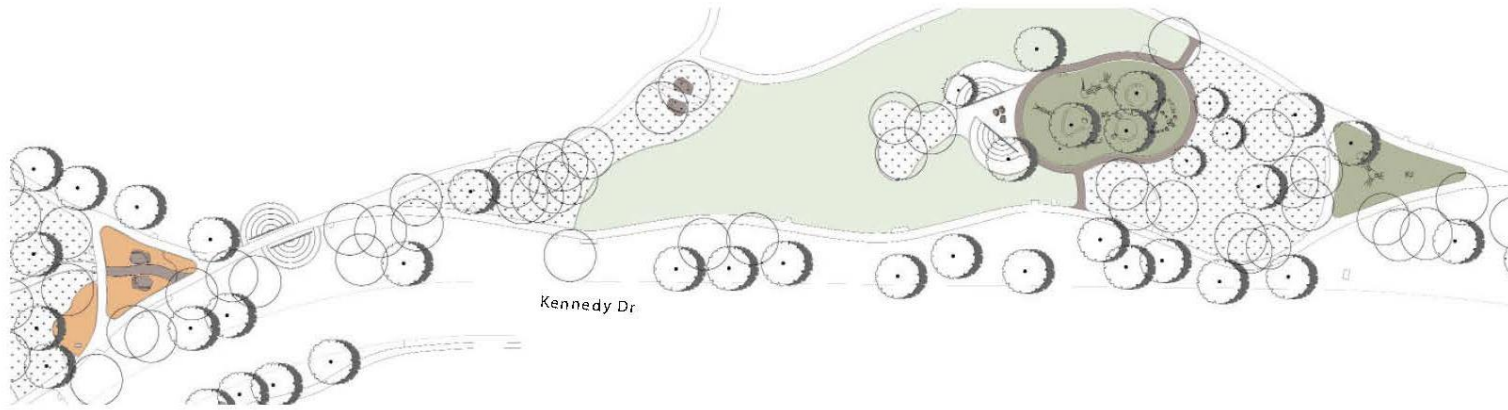
**option 3** - traditional playground



# Proposed Playground Relocation



**Option 1** - new playgrounds relocated to open grass area and butterfly-pollinator gardens to replace existing playgrounds.



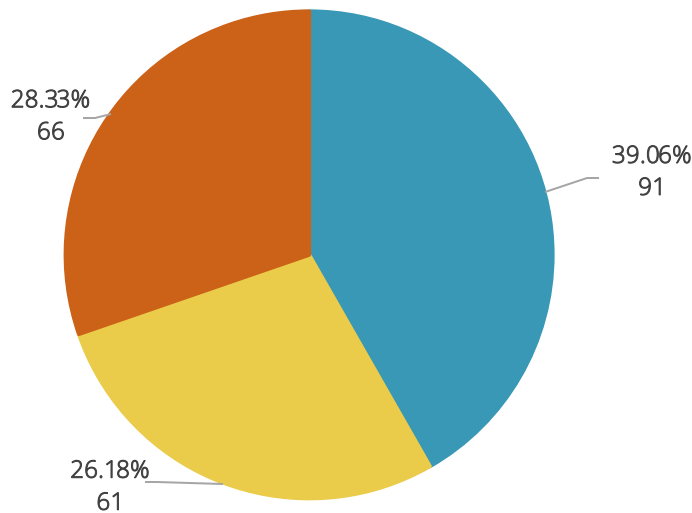
**Option 2** - west playground gets relocated to open grass area and replaced with butterfly-pollinator garden and east playground stays and gets updated equipment and synthetic turf safety play surface



# Playground Survey Results

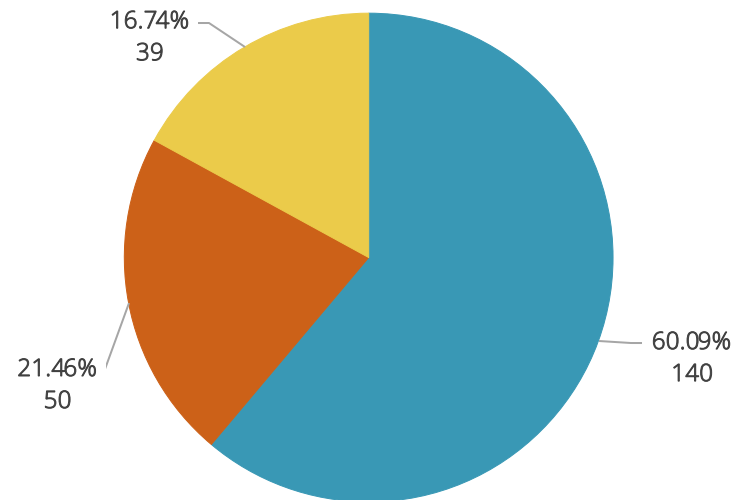
## Survey Results

From the options presented, which do you prefer?



- Leave Playgrounds where they are located
- Option 1
- Option 2

Which playground theme do you prefer?



- Nature Playground
- Futuristic Playground
- Traditional Playground

# Playground Comments

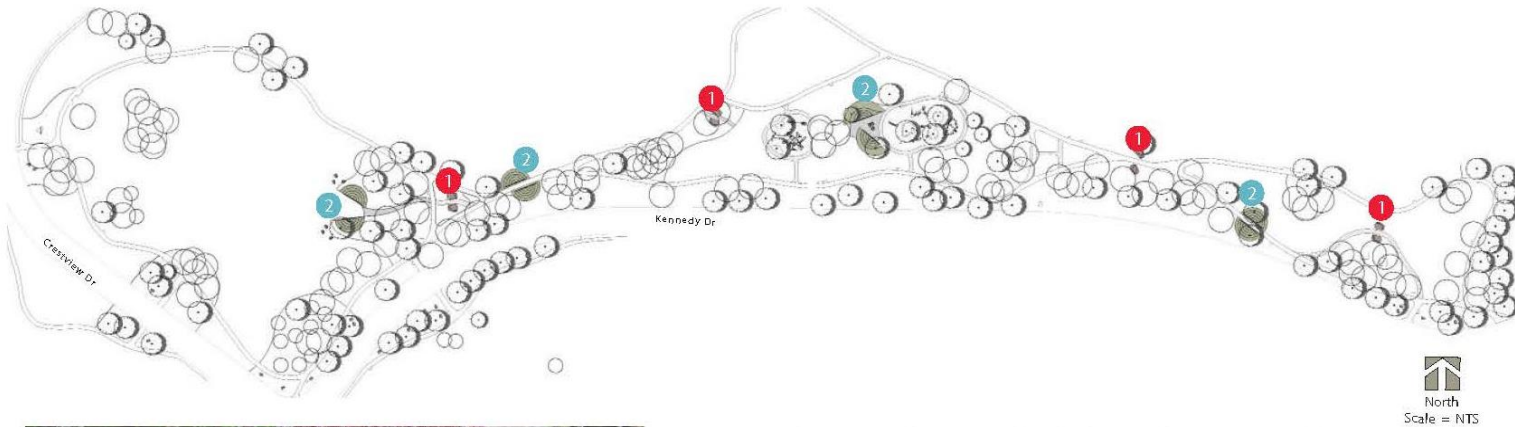
## Open Comments

- Suggestions were made to add play equipment that accommodates more ages and add a shade canopy to the playground.
- Respondents liked the idea of having playgrounds close together but noted that the west (lower) playground is easier to access from the neighborhood and relocating it could make access less convenient.
- The locations of the proposed butterfly/pollinator gardens would impede popular play areas.

## How will feedback be addressed?

- Playgrounds will be updated in their current locations with equipment to accommodate a wider age range.
- A canopy or shade structures will be added to the playgrounds to provide shade.
- The pollinator and butterfly garden areas will be removed to create more open space for children to play and run freely.

# Art Installation: *Journey Lines*



Dispersed across the length of the park, a series of landscape berms and stones creates passages that evoke the journey through mountains, canyons, and tight spaces that many people took to get to Salt Lake City since its founding. Engraved on the stones and the berm walls, abstract lines depict one person's unique journeys to or from Salt Lake City, selected specifically for the artwork. Each engraved line links to a web page describing in detail that person's journey. The highlighted journeys could include current residents who have come to Salt Lake City more recently, as well as early pioneers, the Donner Party, and Indigenous Peoples of the area. Together the artwork will include a wide cross-section of people of the region, past and present.



# Background on Art Installation

## Why was Donner Trail Park chosen for art?

- **Public Art Program Overview:** The Salt Lake City Public Art Program commissions local and national artists to create new, enduring, and thought-provoking works tailored to specific locations like Donner Trail Park.
- **Geographic Equity:** Donner Trail Park was chosen to address geographic inequity by bringing public art to an underrepresented area (District 6), ensuring equitable access to cultural spaces throughout Salt Lake City.
- **First Major Installation Since 2009:** *Journey Lines* is the first significant public art installation in District 6 since 2009.

## How was the art selected?

- The 2023 Donner Trail Park community engagement results highlighted art as the preferred way to reflect traditions and stories, which guided the selection of the artist and design based on the community's desire to maintain the park's serene landscape while enhancing its historical significance.
- The art selection was reviewed and approved through a different public process led by the SLC Arts Council. This process included an open call for artists, a public information session, and project discussions in two public meetings. The Mayor ultimately approves any public art selection decisions.
- Throughout the artist selection process, the Art Design Board and the Public Art Program remained guided by community preferences.



# Art Installation Comments

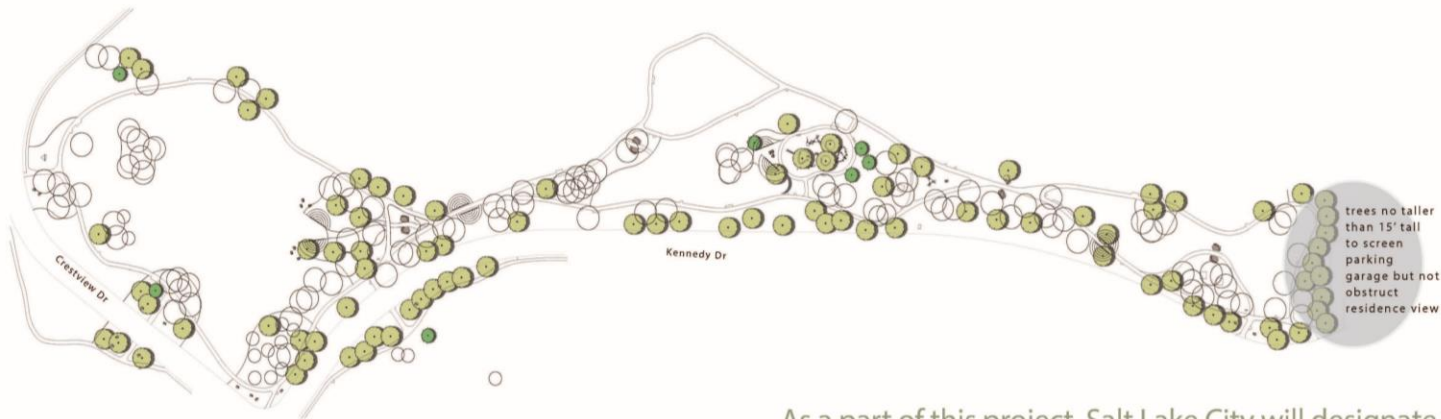
## Open Comments

- Concerns about long-term maintenance of the park and vandalism.
- The location of some of the art pieces conflicts with the current use of the park, i.e., sledding.
- Expressed desire for the art to be relocated to another park.
- Requests for the allocation of the art funds to be used for other park enhancements.

## How will feedback be addressed?

- Staff will continue to work with the artist, Adam Kuby, in integrating artwork throughout the site, including relocation of elements.
- Ensure artwork elements don't conflict with areas prioritized for other park usage.
- Work with the commissioned artist to identify “journey lines” that will be depicted throughout the artwork. This will include opportunities for further engagement.
- Adam Kuby's *Journey Lines* will become part of the City's permanent public art collection. As such, it will be properly stewarded and cared for by the Public Art Program through its maintenance fund, which is funded annually through the Percent-for-Art CIP allocation.

# Proposed Memorial Tree Grove



## Deciduous Tree list \*

*Acer grandidentatum* / Bigtooth Maple  
*Catalpa bungei* / Manchurian Catalpa  
*Cercis canadensis* / Eastern Redbud  
*Fagus sylvatica* / European Beech  
*Ginkgo biloba* / Maidenhair Tree  
*Gleditsia triacanthos* / Honey Locust  
*Malus x 'Spring Snow'* / Spring Snow Crabapple  
*Metasequoia glyptostroboides* / Dawn Redwood  
*Nyssa sylvatica* / Tupelo  
*Quercus macrocarpa* / Burr Oak  
*Tilia cordata* / Littleleaf Linden  
*Ulmus americana* / New Harmony American Elm  
*Ulmus americana* / Princeton American Elm  
*Ulmus parvifolia* / Lacebark Elm  
*Zelkova serrata* / Green Vase Japanese Zelkova



## Evergreen Tree list \*

*Cedrus atlantica* / Atlas Cedar  
*Cedrus deodara* / Deodar Cedar  
*Cedrus libani* / Lebanon Cedar  
*Pinus sylvestris* / Scotch Pine  
*Sequoiadendron giganteum* / Giant Sequoia

\* Tree list provided by Salt Lake City Urban Forestry

As a part of this project, Salt Lake City will designate its first memorial tree grove. This memorial grove speaks to the community's desire to honor and celebrate loved ones who have passed while adding needed tree canopy. As the grove becomes established with time, it becomes a source of beauty and wildlife habitat within the city. The grove provides the opportunity for community members to donate trees in memory of a loved one in a more structured, sustainable, and predictable way. With the addition of one hundred trees over time, the grove's design will tell a story of growth and change, creating a contemplative space that fosters connection with nature and remembrance. Information on how to memorialize a loved one in this grove will be coming..

# Memorial Tree Grove Comments

## Open Comments

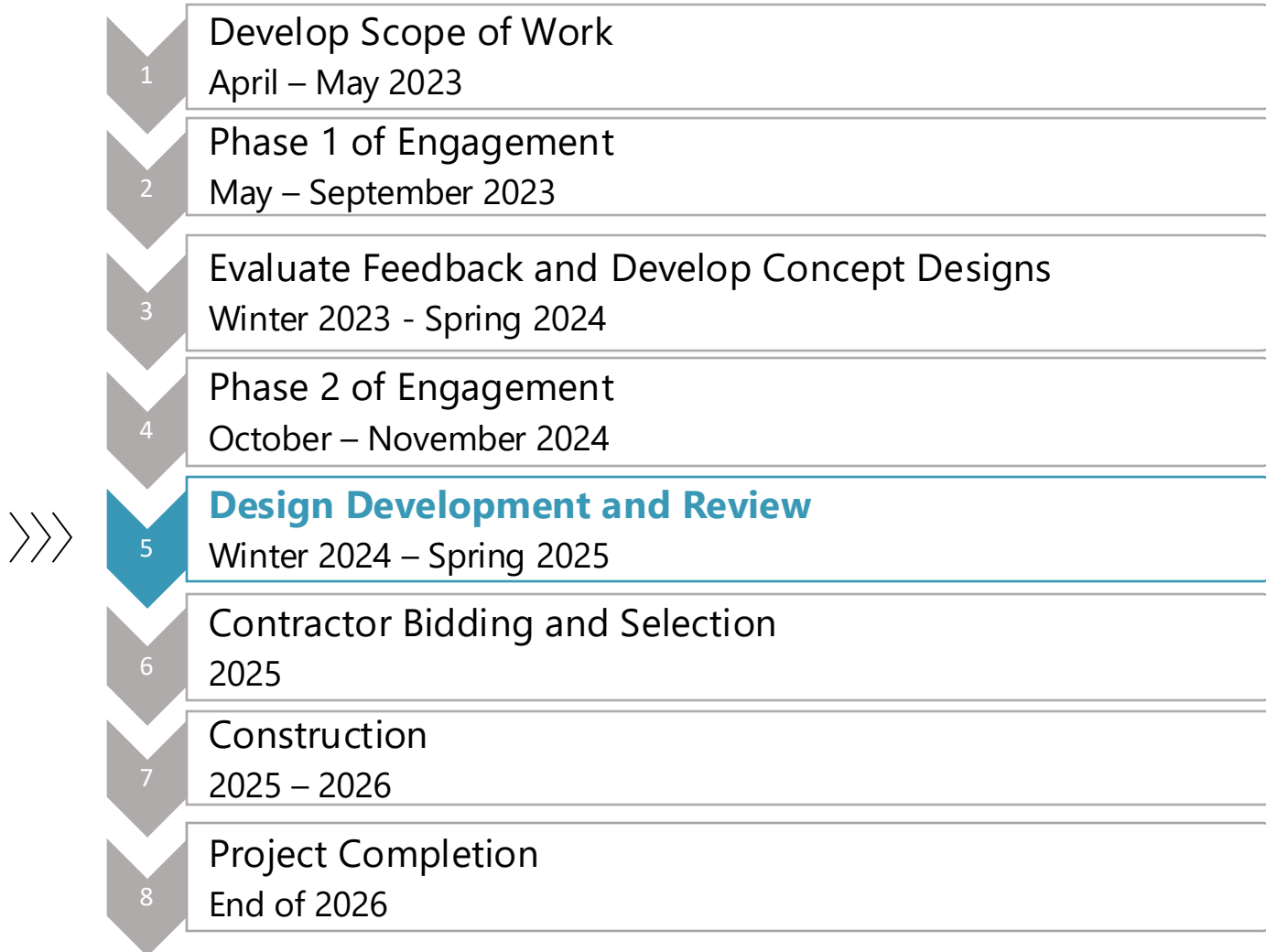
- Affirmation of the need for more trees and shade.
- Suggestions for different tree species that are deer-resistant and can withstand the strong winds coming out of Emigration Canyon.
- Concerns about the maintenance of the trees.
- Concerns about the trees blocking city views, specifically on the east side by the condo buildings.

## How will feedback be addressed?

- Project will include updated irrigation to have tree-specific heads.
- Placement of trees has been selected to ensure trees do not impede existing views.
- Trees planted will be 15' tall or less on the east side by the condo building.



# Tentative Project Schedule



# Additional Information

## Next Steps

Public Lands staff will consult with technical experts, consultants, landscape architects, and maintenance supervisors to adjust the final design of the park based on feedback received. Once the design is finalized, Public Lands will go out to bid to select a contractor.

Construction is tentatively expected to begin in 2026.

## Project Website

Visit the project website [slcparks.com/DonnerTrail](https://slcparks.com/DonnerTrail) to:

- Sign up for project updates
- Read the Frequently Asked Questions (FAQ) page
- Read the Round 1 Community Engagement Report
- Learn more about the project!



# Appendix 1: Comment Boards



*Comment boards used at events to collect feedback*

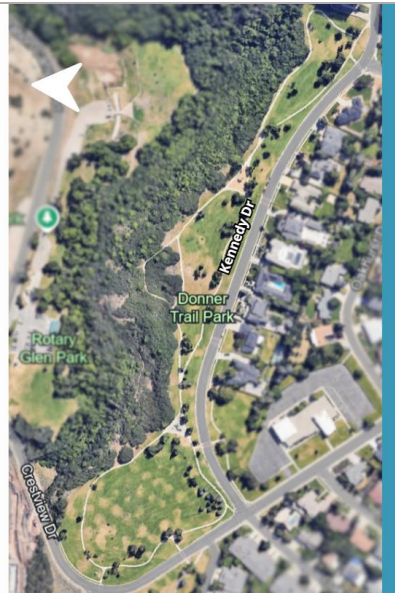
# Appendix 2: Mailers

## Take a peek into the future of Donner Trail Park

In the summer of 2023, we asked for your input on the improvements you'd like to see at Donner Trail Park.

Based on your feedback, we've created a few proposed designs for the park.

**Let us know which design you prefer!**



## Get involved!

- » Take the survey to view and comment on the designs
- » Scan the QR code or visit the link to get started!



*Mailers were sent out to households within 1-mile of the park.*



# Appendix 3: Yard Signs

## See the vision for Donner Trail Park!

We asked you how Donner Trail Park could be more enjoyable.

We listened to your feedback.  
Now, check out the designs and weigh in!

### How can you get involved?

-  Chat with us at the events or meetings
-  Take the survey



## Learn More!

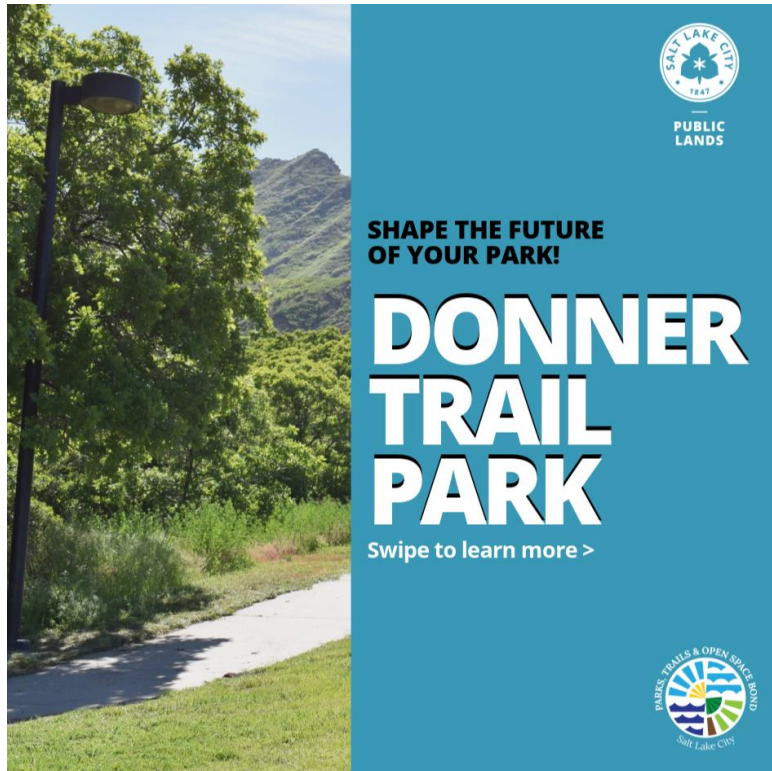


[myparkvision.com/GO\\_BondParks](https://myparkvision.com/GO_BondParks)



*Yard signs placed around and near the park.*

# Appendix 4: Social Media Posts



*Social media posts created for Facebook and Instagram*

# Appendix 5: Banner

## SEE THE POSSIBILITIES FOR DONNER TRAIL PARK



Inspired by your  
feedback, we've created  
proposed designs for  
the park.

Let us know your  
thoughts!



[slcparks.com/DonnerTrail](http://slcparks.com/DonnerTrail)

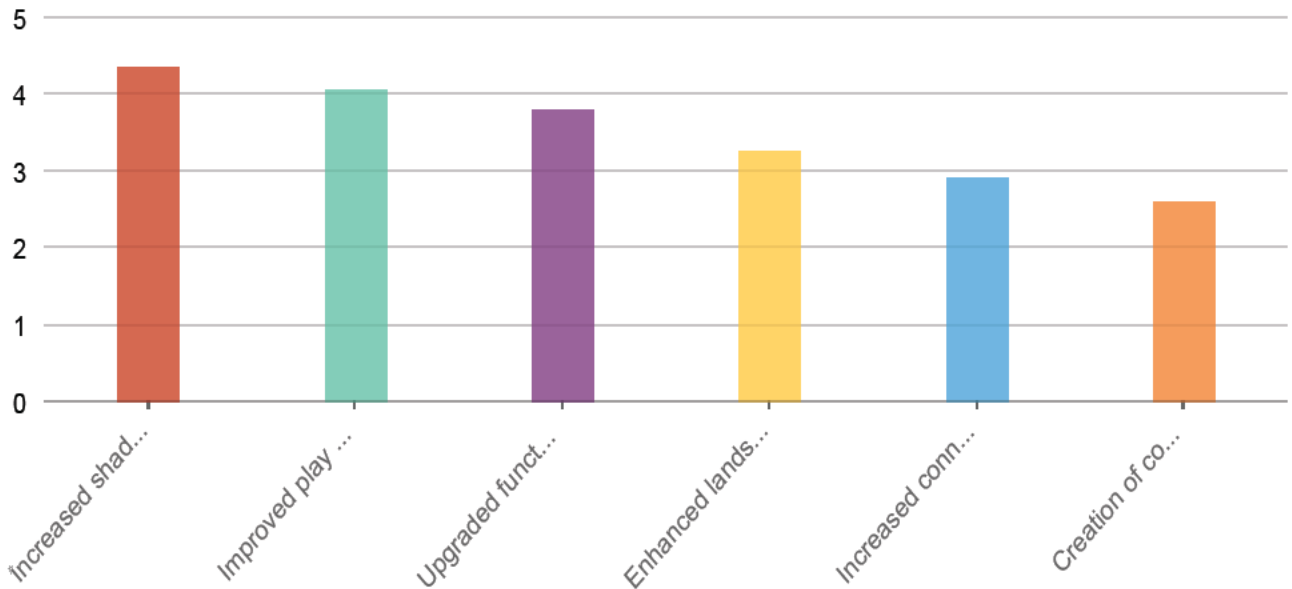


*Banner sized 72" x 48" was placed on the west entrance of the park*

# Donner Trail Park\_ Proposed Designs

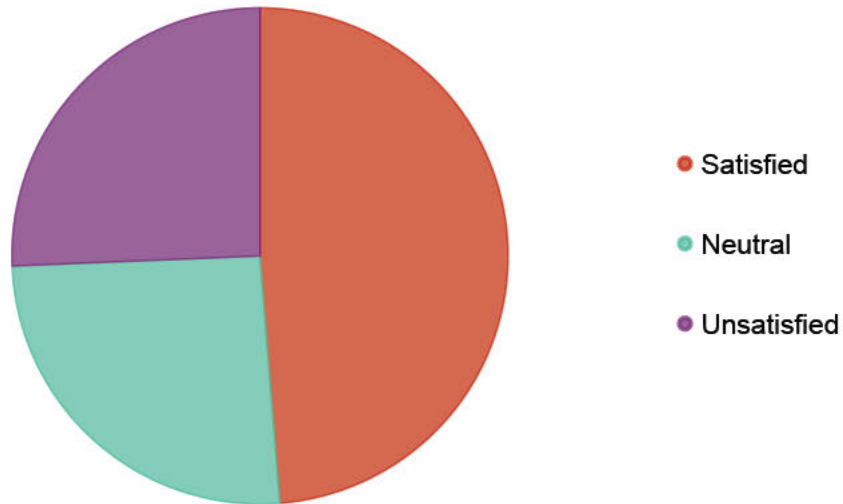
## Guiding Goals

Rank the goals in order of importance to you.



Rank	Answers	1	2	3	4	Average score
1	Increased shade and tree canopy	28% 63	26.22% 59	20% 45	11.11% 25	8% 18 4.35
2	Improved play area	33.33% 75	19.11% 43	9.78% 22	10.67% 24	12.44% 28 4.06
3	Upgraded functional amenities	14.67% 33	24.89% 56	20.44% 46	16.89% 38	12.89% 29 3.81
4	Enhanced landscape design	11.11% 25	12.89% 29	17.33% 39	24% 54	19.11% 43 3.26
5	Increased connectivity and accessibility	7.11% 16	10.67% 24	16.89% 38	20% 45	23.11% 52 2.92
6	Creation of contemplative spaces	5.78% 13	6.22% 14	15.56% 35	17.33% 39	24.44% 54 2.60

Answered: 225 Skipped: 8

**Enhanced landscaping****How satisfied are you with the proposed landscape changes?****Answers****Count****Percentage**

Satisfied

95

40.77%

Neutral

50

21.46%

Unsatisfied

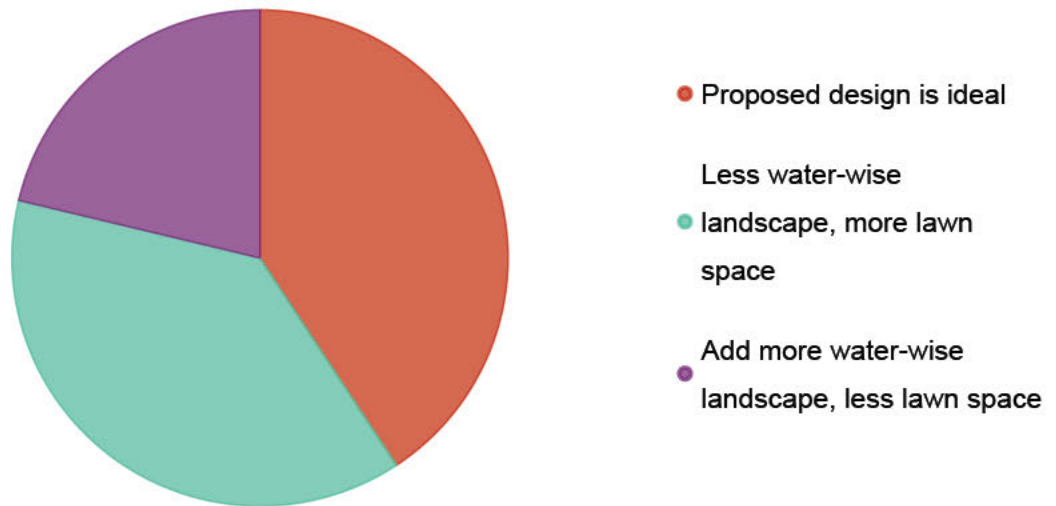
50

21.46%

Answered: 195 Skipped: 38

**Do you prefer more or less lawn space in the landscape design?**

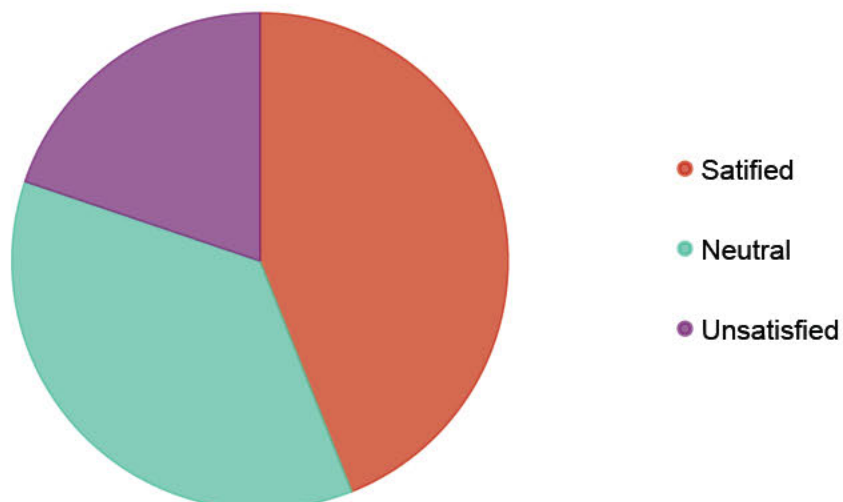




Answered: 221 Skipped: 12

### Amenities & Connectivity

#### How satisfied are you with the proposed amenities?



**Answers****Count****Percentage**

Satisfied

91

39.06%

Neutral

75

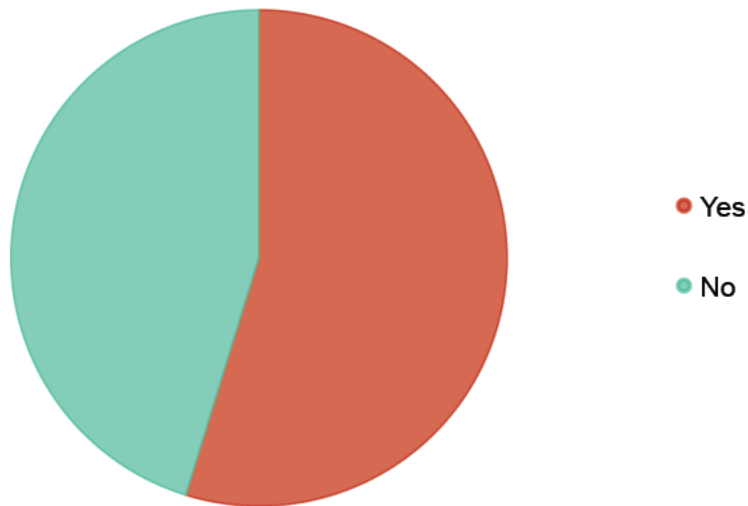
32.19%

Unsatisfied

41

17.6%

Answered: 207 Skipped: 26

**○ If Public Lands has additional funding opportunities, are there other...****Answers****Count****Percentage**

Yes

121

51.93%

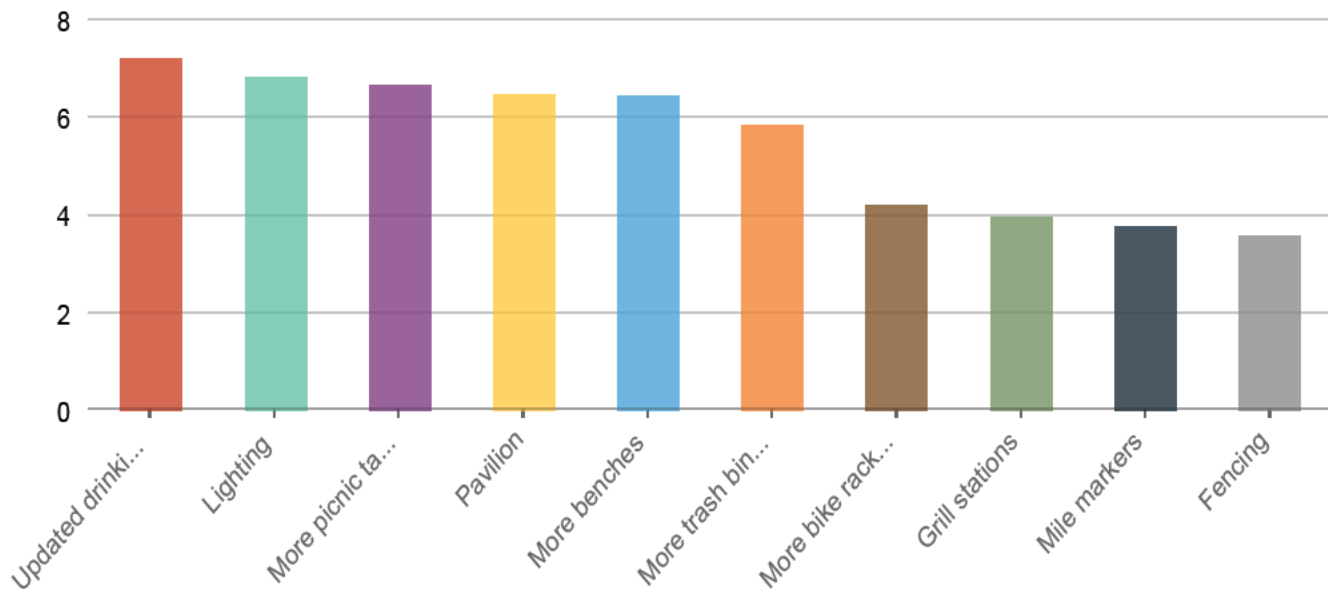
No

100

42.92%

Answered: 221 Skipped: 12

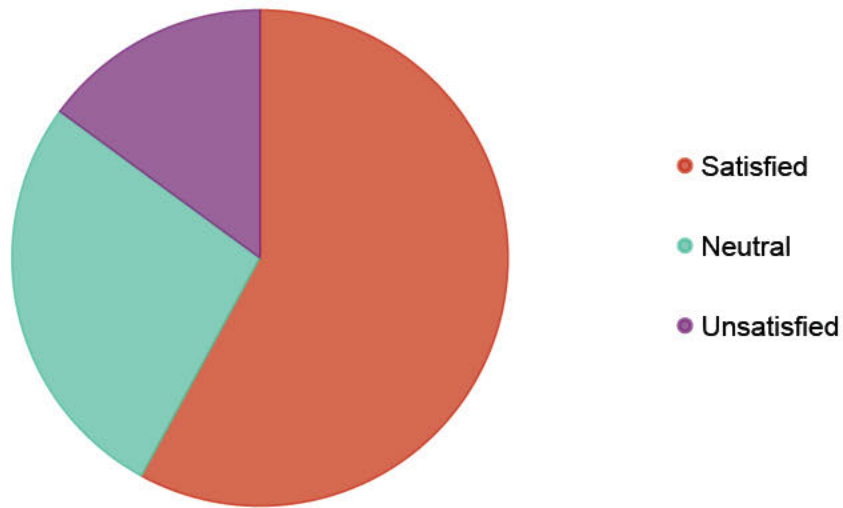
**○ Please rank in order which amenities you want to be prioritized if additional...**



Rank	Answers	1	2	3	4	5	Average score	
1	Updated drinking fountains	27.43% 31	14.16% 16	14.16% 16	7.96% 9	10.62% 12	7.96% 9	5.31% 6
2	Lighting	16.81% 19	16.81% 19	13.27% 15	11.5% 13	15.04% 17	6.19	6.83
3	More picnic tables	7.96% 9	16.81% 19	19.47% 22	11.5% 13	12.39% 14	13.27% 15	8.85% 10
4	Pavilion	25.66% 29	12.39% 14	3.54% 4	12.39% 14	5.31% 6	7.96	6.46
5	More benches	7.96% 9	13.27% 15	14.16% 16	15.93% 18	20.35% 23	6.19% 7	11.5% 13
6	More trash bins	4.42% 5	12.39% 14	10.62% 12	14.16% 16	13.27% 15	15.93	5.85

Answered: 113 Skipped: 120

How satisfied are you with the proposed pathway accessibility in the park?

**Answers****Count****Percentage**

Satisfied

128

54.94%

Neutral

60

25.75%

Unsatisfied

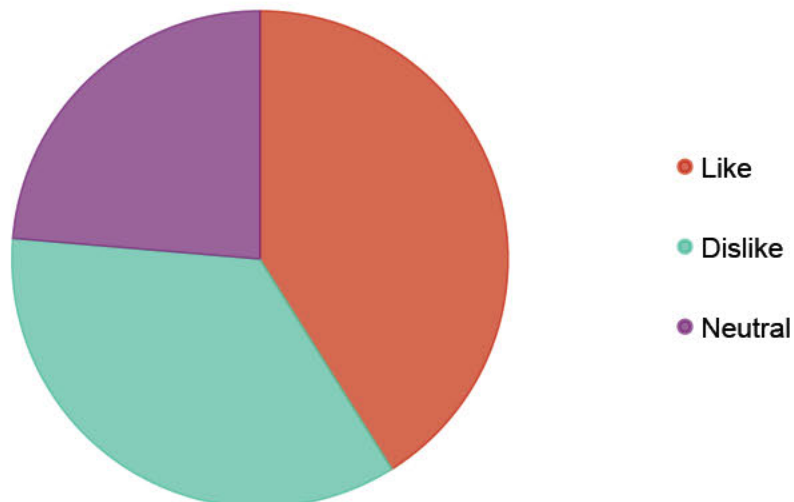
33

14.16%

Answered: 221 Skipped: 12

**Playground Features**

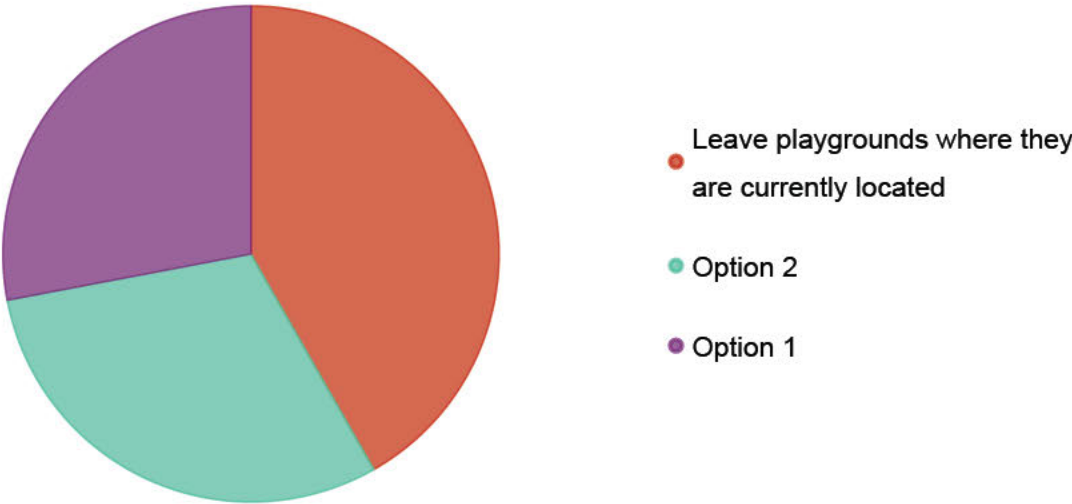
○ For both options, how do you feel about adding a pollinator garden where...



Answers	Count	Percentage
Like	85	36.48%
Dislike	73	31.33%
Neutral	49	21.03%

Answered: 207 Skipped: 26

From the options presented, which do you prefer?

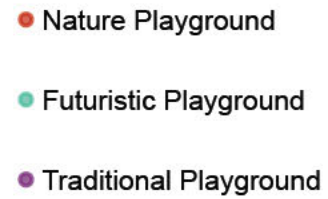


Answers	Count	Percentage
Leave playgrounds where they are currently located	91	39.06%
Option 2	66	28.33%
Option 1	61	26.18%

Answered: 218 Skipped: 15

Which playground theme do you prefer?





Answered: 229 Skipped: 4

• Do you have any additional comments, concerns, or suggestions?



Response	Count
You have done a good job of incorporating the community's input into this design, thank you. I love the landscape art and memorial tree proposals. I have three thoughts/concerns: 1) The plantings/gardens will require maintenance and upkeep and the City should budget the time and money for that. 2) Given the proximity to open land, rattlesnakes and other critters are a not infrequent encounter at the park. I am concerned that "water wise" grass and other plantings will attract them into the park more. And putting that grass near the playground areas seems to be inviting an unwanted encounter. I would recommend thinking about this when the final design is being made. 3) In line with the above, I have 3 kids that use the park's playgrounds. Kids at the playground also like to run around the surrounding area. So it seems to make sense to keep the regular grass turf in the area around the playgrounds and to put water-wise grass and other plantings in less trafficked area.	1
Would like to see connecting trails to larger overall trails plan including the bonnevillie shoreline trail and rotary glen park	1
Will you be improving trail access to the Rotary Glen dog park? That would be very helpful. Donner is currently used for much off-leash dog play. Rotary Glen is nearby but very hard to walk to.	1
While I applaud the drive to use less water, I am concerned that there are few open spaces where people can play informally -- frisbee, kick or pass balls or run around with a leashed dog. So much of our open space is either focused intensely on specific activities -- baseball, soccer, etc., or attempts at more native of landscaping. Donner Park is great because it has lots of informal open spaces. It needs more shade and likely more opportunities to sit or gather, but too much development will ruin the benefits of space. It can be used creatively by users. I generally like and respect the intent of this plan, but I encourage keeping at least one large open space.	1
We need public toilet facilities in the park.	1
We don't need fancy at this park! We need it taken care of adding more garden and butterfly pollinator areas is going to cause more areas that need to be weeded. We need this park to be functional and to have open space which is what we as the neighborhood use it for. Community gatherings. Sledding and waterside hills, soccer games and practices. My preference is to keep the park maintained with fewer equipment and a lot more money into maintenance and leave the rest of it alone!	1
We do NOT want a bathroom facility at this park. It is a neighborhood walking park and we do not want the additional traffic a bathroom would bring. A bathroom would be an additional upkeep concern. Upkeep of the park is a challenge as it is.	1
Water splash pad for summer? Good shade on playgrounds is a must. Go check out Laird Park on a Saturday morning. It's not the most modern place but the shade makes the difference. Have playgrounds with accessibility for a wide range of ages	1

Want more colored lights at night to make it more pretty.	1
Update the playgrounds in their current locations, add a more benches and trees and please don't spend unnecessary amounts of money adding unnecessary design elements. The park is great and people love the big grassy area, it all just needs a little face lift and some more shade.	1
This is used as an off leash dog park all the time. I understand you don't do enforcement, but it's a major issue that needs to be addressed, as many dogs aren't well behaved and at times aggressive	1
This is a very nice simple park. Leave it the way it is and waste our tax money someplace else please or refund the money to us.	1
These plans are a miss. Entirely out of step with what the park needs. Far too much emphasis on unnecessary art and landscape flourish (that will deprecate functionality of the park) when what we need are bigger, better playgrounds with shade and the vole holes gone to make the grounds functional. The structure of the survey and survey process is fundamentally flawed and leading to conclusions and directions out of step with what the community is actually advocating for.	1
There must be a way to spend monies to keep up with what we have.	1
There is no need to turn a functional park where there is a large grassy area where kids play soccer, dogs can run - to "pollinator Butterfly" gardens. That's an awful idea. Butterflies exist in the vast foothill areas, river valleys - so that is not a need for a community park. I'm now concerned whoever came up with that idea is not qualified to have input on this park. The needs are: More trees, more Park benches and paved - concrete or asphalt trails. Adding dirt or crushed granite trails, again does nothing. We have 100+ miles of these trails in our backyard. What we need are paved trails that need NO maintenance. More shade is needed, so you did get that right. More connectivity is also important. Also, the only art that works are memorable, iconic sculptures, where people take pictures, etc. So, please utilize the edges / corners of the park. The nature playground is great. I've been in real estate for 30+ years so I do have a lot of experience with this kind of stuff. Thanks!!	1
There is a lot of use of the park by elderly who live in nearby condos. Creating a nice (paved) pathway that is fairly level with many benches around the upper pollinator gardens would be idea. Gravel pathways are harder for our elderly neighbors to navigate with walkers or canes. Plenty of shade and benches in the upper park also would help make it more useful to our seniors. Keeping the playground equipment in the lower area of the park would help ensure that the upper area was a space for quiet walks and reflection. I couldn't tell which playground diagram most reflected this ideal: upper= quiet, lower=play. In the lower area of the park, there is a hill that the children love to use for sledding in the winter. A fence between this sledding area and the road (by the zoo) is the only space where I think fencing is needed. The kids sometimes shoot out into the road here, which is a bit dangerous.	1

There are many other areas of the city that would benefit from upgrades and changes more than Donner Park.	1
There are a lot of people with dogs in the area who use this park. It would be nice to see a fenced area where dogs could be off leash. Second comment - it seems it happens over and over again - a beautiful public facility is built but upkeep is just kept to a minimum. I'd rather have less, but have awesome upkeep than more with terrible upkeep.	1
The survey auto-populated my 2-10 responses. The only one that is accurate is the first response. I don't think the park needs to be reimaged. The grassy area on the west gets used quite a bit for soccer practices, etc. kids also like to sled down the hill when it snows. The new design has bushes on the hill. It would be great if the drinking fountains worked. They usually leak. It would also be nice to use the money on lawn fertilizer to get rid of weeds and dandelions in the lawn. If you walk the trails in the winter, there is a sheet of ice on the trails. I don't know if the trail designs would make the trail less slippery. I'd rather spend the funds on maintenance.	1
The playgrounds need shade. The equipment gets too hot to play on in the summer. Add water bottle fillers to the drinking fountains.	1
The playground updates absolutely need to have some sort of shade structure. Lots of sun exposure makes the playgrounds that are currently available almost unusable during the hot months. Would love to see a designated dog park fenced in area. Can be small but would be highly popular in the area. Would also love to see the art installations take on the aesthetics of the mountain and the great west facing view. Lean into the amazing sunsets!	1
The plan looks nice. I believe our neighborhood prefers a quiet, beautiful park to walk through. You already have the views of downtown and the mountains, but the park has looked messy for years. It looks like the plan will be a drastic improvement. I do hope the open grass spaces will still exist in some capacity.	1
The park is appreciated as is by my family and neighbors. More trees do seem like a good idea but most of the rest of this project seems unneeded and like a waste of money. Particularly the art installations.	1
The hill below the existing western park is used for sledding all winter and has been for my entire life. Planting or covering this hill with anything but lawn would eliminate that staple of Donner Park. Please do not cover this hill - anyone who uses Rhea park would tell you the same.	1
The futuristic playground has some really fun features but it would be great if we could get some play features that feel unique rather than something ordered from a big box store. I'm sure the budget is not allocated for something like the Tongva park in Santa Monica, but using that park as inspiration might result in a unique artistic feel for the neighborhood.	1

The big stones showing the travels of founders, and others, are hideous. They are unnecessary. The Pioneer Park This is the Place tells the story quite well. This is overkill.	1
The best parts of the park are the least accessible, and the resultant seclusion is the source of their harm. The interface with the sliver of scrub oak forest to the north is another unique feature worth preserving. Not every part of every good park has to be for everyone, and "connectivity" can be detrimental.	1
The art installation is a waste of money and resources. The park has incredible views and plenty of opportunities for contemplation and enjoyment. Spend the money elsewhere.	1
Thank you for all you do! We're excited to come play, observe nature, and learn with neighborhood friends!	1
Slight slope brings intense direct sun in the afternoon. Keep that in mind when planting. As I'm sure you know, trees have nearly constantly died due to heat from that exposure.	1
Shade canopy on playgrounds would be ideal. Almost unusable in summer because surfaces are so hot/burn kids skin. The kids love to run down the grass hill!! Don't get rid of it. Such good exercise. Nice to have a separate playground for younger and older kids. Walking trails and playgrounds are where our neighborhood comes to connect.	1
Restrooms would be the single most valuable addition. Everything else is window dressing and does add to the functionality of the park.	1
Restroom are very important but not considered in any of the plans.	1
Replacement of the playgrounds is really confusing. I can't form an opinion when I don't understand what is being proposed. Where will they move. Will they be bigger/ smaller? I'm opposed to the art installation and tentatively opposed to the memorial grove. Many aspects of this survey are too vague and confusing. What is meant by increased "connectivity and accessibility". We need more specifics of what is being proposed. And better artistic renderings. I've heard many people talk about wanting the drinking fountains to be redone to have dog bowls. A community garden could be nice considering this is one of the most densely populated urban areas in the city with many living in condos. Playgrounds flooring is old and out of date but the equipment and nearby picnic tables are nice and get a lot of use. Large fields of grass at the very top and very bottom get a lot of use and I hope they will still be usable in the same ways.	1
Ponds, bathrooms	1
Policing of area surrounding park Residents are speeding in 20 mph residential zones Worried about the safety of children and seniors	1



Please replace the lawn with water-wise landscaping. The grass areas use a lot of water, which seems very wasteful in a dry climate like ours.	1
Please please please do NOT plant additional flower gardens. They will fill up with weeds. We love the open field. We frequent the park as it is down the street the street from our house. Please do NOT move the play structure to the middle of the greenway. This would make it much less accessible for the entire neighborhood. Also NO sculptures. We don't need weird out of state art in our neighborhood.	1
Please keep the 2 playgrounds! There is nothing else up in this area for kids to play on. Love the idea of adding more tables and benches, updated lighting and fix the drinking fountain. Update the playground to make it more of a nature playground! Please add blinking light crosswalks for kids to push and light flashes when kids cross the street from west playground to grass area by church, cars go so fast down that street and it's hard for them to see kids crossing!	1
Please include toddler bucket swings. Thanks	1
please have the sprinklers go on during times where people are not using the park in the summer (10 pm - 6 am). I enjoy the open spaces we have at this park, I use it every day. more trees for shade would be good, and plant/grass options that don't require as much water.	1
Please enhance the playgrounds ! Please post more signage about where dogs can play. They are consistently off leash at the park and scare my children.	1
Please don't bring big crazy art to this park- More that anything work on maintenance The butterfly garden sounds lovely but it won't be maintained and then it will not be an advantage. Please leave the grassy area at the bottom of the park! I'm not sure why you need to always redo the playgrounds-- that is a lot of money!!	1
Please don't block view of foothills to the north or view of sunset over the large green space and leave room for sledding. A lot of people come to watch sunset and use the hill for sledding.	1
Please don't add garden areas. The city has a hard enough time maintaining the grass and trees as is. Putting in gardens will be nothing but weeds within a year. Don't take away our sledding hill. More lighting is necessary to keep us safe. Please don't put in the art work or berms. The beauty of our park is the surrounding area and views of our city. The art work would be better placed at Rotary Glen. There could be more groves of trees and picnic tables. PLEASE upgrade our playgrounds for all ages and abilities to use.	1
please do not put art in the middle of the grass as pictured in original photo.. the open grass space is for kids to run and play	1
Please do NOT have bathrooms in this park! This is a neighborhood park, with street parking near homes and does NOT need restrooms.	1

Playground areas need to be much larger to accommodate larger numbers of kids. Consider the size of playground found at the Draper city park, or the one in Sugarhouse park for a more useable size. Or, can you consider adding a third playground if you plan to keep them on the smaller side to accommodate more kids. Each of the existing playgrounds can only accommodate a couple of families (4-8 kids) at a time without being overcrowded/unsafe. Regarding planting, placing any planting on the slope west of the lower playground would be a waste as it is the only sledding hill around that is regularly used and that planting would be destroyed. And blocking it off from sledding would be a huge disappointment to kids that use it.	1
Pickleball would be great!!! Courts could be located where they wouldn't interfere with residents. Restr	1
oom!!!	
Pickleball courts and a pavilion and a community garden, please.	1
Park does not need to be redesigned, funds should go towards maintenance or other recreational uses (tennis/pickleball courts, soccer field)	1
Not at all in favor of artwork in the park -not impressed by the proposed offerings. Appear to be severely out of scale with the park property and adjacent foothills. Surrounding foothills are sufficient visual image. Spend monies on landscape / hardscape to enhance the visual appeal and interest of the park. Appreciate the effort to add specimen trees -and to replace some of the damaged / dying species.	1
No restrooms. This is a neighborhood park they are not needed	1
No new lights! No new cement!	1
No more asphalt. Concrete is better. No recycled rubber for playgrounds. That shit is toxic. Your communication (QR code only) is ridiculous and ageist. Just put the changes on the stupid mailer. Totally inconsiderate of older folks in our community!!!!	1
No art. What we love about this park is that it is *all natural.* Art is *manmade.* We do not want an art installation in this park. We especially do not want an artist from Portland to come and tell us about our "journey". Any manmade art will be a blight on the park. Do not add xeriscaping and pollinator gardens. The city does not care for the grass and trees in the park. Adding bedding plants will only result in weed gardens. It will result in unkempt beds throughout the park and weed seeds in our yards. This park is a true gem. It does not need any "reimagining." This project feels like a budget in search of a project. As someone who uses the park every single day to walk her dog (and I'm not talking about the Rotary Glen dog park... I'm talking about Donner Park), the only upgrades this park needs are the following: Working water fountains, with dog fountains Poop bag dispensers Much better maintenance of lawns and trees Please stand down on this project. It is not needed!	1

NO art installation. I hear despite everyone's survey respnses and in-person comments expressing that they didn't want art, you went ahead and commissioned a piece but you don't have to install it. NO bathrooms. There are 2 sets of bathrooms down in Rotary Glen that are locked up and people poop right around the outside of them. Maybe contact Salt Lake City Parks (?) and get them operational before adding more right up the hill. No planting beds. Maintain the grass (weeds), drinking fountain in the park better. Everyone I see, walks to the Donner Tr Park. The young kids who ride are never out of eye sight of their bikes and are with adults who are on foot. It seems like somebody is trying to throw money at the park just for the sake of change. Please spend that money on maintaining what we already have.	1
No	1
Need to add a restroom, some small pavilions, drinking fountains and a workout, exercise and stretching area.	1
Need better bike paths to get to parks (foothill, from Sugarhouse, etc)	1
Nature play theme. Nature open ended play areas. Leave decent amount of lawn space. This park is great for big games of kickball and frisbee. And for dogs to run. Love pollinator areas. Need better water resources and at least one bathroom area. Dog bag stations needed.	1
My main suggestion would be to fix and maintain the ammenities that are already there rather than adding additional ones. Mow the lawn and edge it on a regular basis and address the obvious rodent problem in the park. Fix the drinking fountains. DO NOT add additional garden space that will not be maintained!! DO NOT interrupt the flow of the sledding/water slide hill that is used year round. Upgrading the playgrounds would be great, but having two playground spaces is nice to spread out the children using the areas. Adding some additional trees (ones that would flourish in our area) and benches and tables would be nice. I see no need to take up space in the park with art work. As I reviewed the original survey there was VERY LITTLE support for artwork, so I am unclear as to why that was included. To include historic information would be nice - perhaps a plaque that tells of the Donner Party for whom the park was named. Thank you for considering my opinion.	1
My main concern for the parks is making it a fun, but safe option for my growing children. We live right up the street from this park, and I wish it was more of a meeting place for neighborhood kids. Unfortunately the current options (especially the East playground) is not developmentally appropriate for my kids. My kids love the updated Milcreek playground by downtown Holladay, with climbing, slides, and swings for all ages! My top requests would be updated playgrounds, bathrooms, and more shade and benches! I like option one and making a large play area instead of two small ones. My only concern about that option is the exact location... the upper part of Kennedy is more challenging for neighborhood kids to walk to, so I like the current location of the lower playground more. We need Donner park to be accessible and safe for our local kids!	1

My favorite things about this park are the easy sidewalks, large open grass, and the open sky for the gorgeous view of the city. I frequently go to this park and it is my favorite in the valley. I fear my favorite aspects are being taken away and the park is being complicated.	1
My family and I love the lawn and open green space - it would be nice if the lawns were better cared for or in terms of mowing	1
More swings and some baby swings. Drinking fountains that work. Doggie-doo bags and more trash cans. Cut down dead branches and dead trees (see west/north side of park). Park grass is filled with weeds and sloppily cut and there are holes where voles/moles make tunnels and ridges. Please no flower gardens because they take too much care-that won't happen. Please, no planting at the top of the sleigh riding hill (west side of park). Please don't combine the playgrounds. We don't need "re-imagining, talk of entropy," etc. by an out-of-state artist. We don't need tribute sculptures or art projects-they will be white elephants some day. This is Place Park is across street paying homage to those who came down Emigration. Just put up a sign to remind people why park named Donner. Clean up hidden trail area overlooking mouth of canyon-homeless are there and kids there w/ drinking parties. Take what we have, clean it up, add some shade trees, maintain it, make it fun, clean and inviting.	1
Make the playground nature themed like wheeler farm! Also add shade covers so the kids can play in summer.	1
Make kid friendly!	1
Leave the playgrounds as they are and add pollinator gardens in some of the current grass areas.	1
Leave the park alone! No art work. Leave the grass hill alone. The park is already neglected, do not add more trees and landscaping to be neglected.	1
Leave flexible grass areas, don't put patches on that destroy opportunities for field games and picnic with blankets, trees are great, lower playground sledding area bower should stay free. Sloped area above upper playground is better if fancy ideas of pollinators garden etc needs to be done. Absolutely no abstract or other art!!!	1
Keep people from driving on lower or west end of park. They drove all over in winter destroying everything.	1
Keep open grass areas... less is more. Better playgrounds for kids and families	1
It would be nice to have better parking for this park. Love the butterfly and pollinator garden ideas. It would be nice to have dog baggie dispensers here too.	1
Is it possible to put in restrooms? IMO all playgrounds should have them	1

In my opinion, this survey does not adequately address concerns of residents who use the park. Last year residents were asked to respond to your survey. Yet, the results were mostly ignored in what is proposed. For example, only 12% who even responded to the question about artwork said they wanted it. 88% said they did NOT want artwork in the park. But the city went ahead and commissioned the artwork. The same applies to other responses to the survey. Is the city so out of touch with the residents? We need a public meeting with a representative from every entity involved in the proposed plan so we can express our feelings in person! Surely, there are parks in the city where the artwork could be relocated and funds could be used. Our park needs better maintenance, rodent control and care of lawn and trees. Perhaps playground equipment could be upgraded, but even that was not overwhelmingly requested in the survey. We don't need our park to be "reimagined."	1
I'm very concerned about the art design you have chosen. It's a great idea BUT, there is a drug problem in the park and the berms and open rock design makes it very easy for people to hide. The existing trail and scrub oak to the north of the park is the area drug trafficking occurs. Mostly at night. The existing lightening in the area is very poor. Please look at this again from a security point of view. Open up areas that are easy to escape and add additional lighting.	1
If you put a playground on the grass field, it will ruin the little sledding hill that has been enjoyed by everyone.	1
If there is any way to incorporate a water feature / splash pad it would be so helpful for our community.	1
if funding exists it would be super awesome to find a place to put pickleball courts!	1
I'm concerned that you are going to take away the neighborhoods feel of the park by adding butterfly gardens. I think that is totally unnecessary. I think the park needs an area for kids to run and play and lots of big trees.	1
I would really love a running path along side the walkway in the grass.	1
I would really love a bathroom in Donner Park. Thank you for all you do to care for public lands!	1
I would love to see a better trail up and down the hill from the dog park portion to the donner park poster	1
I would like at least one toilet or outhouse to be included.	1



I walk my dog in Donner Park every day, and see many others walking their dogs or playing on the lawns of the upper and lower park. It's a perfect park. I grew up sledding down the hill and playing on the playgrounds. I had and still have many activities such as soccer practice on the beautiful lawns. It has as such a gorgeous view and the natural beauty is perfect. There's no need for art installations or butterfly gardens. The natural beauty is more than enough. The only things that could use attention are the lawn itself, which has many weeds, and the water fountains, which are not functional. Nothing else needs to change.

I use this park almost daily. The park is just fine as it is. Replacing a few dying trees, and possible updating playgrounds could happen, along with other maintenance. Butterflies use the milkweed and other plants already on site. This unmowed area along the north could be allowed to expand in a water-wise way. Contrived looking rocks and berms will disrupt picnics and well-behaved dogs playing fetch. There's a habitat corridor between Donner and Rotary Glen that shelters wildlife. These two parks are connected by the sidewalk at the north end of the zoo. When I voted for this bond, I thought we were going to add/upgrade community spaces in area that don't currently have park resources and that really needed improvements. If this money is going to be used simply to keep landscapers employed by reconstructing existing, adequate parks, it may be the last bond I vote for.

I think it is very important to have shaded playgrounds considering our summers are very sunny and hot, which can turn slides and surfaces hazardous to skin.

I think a pavilion with a grill is the best improvement that can be made

I love the big grassy area at on the west side of the park. Are there any plans for basketball hoops for older kids? The playgrounds need to be bigger to accommodate more kids.

I have many concerns, the playground as well used, and if it is relocated to the west, it will be further from many people that presently use it the second and major concern is weeds should be eliminated if the weeds will be controlled.

I feel like you have not spoken to a single person who uses this park. It seems like you have just looked at surveys. Please speak to those of us who use this park every single day. We walk our dogs in this park (NOT at Rotary Glen - but in and around Donner Park). We have soccer games and build snowmen in the big grassy areas. We walk from top to bottom and around again. Dogs run around. Kids play at the playgrounds. The only thing this park really needs is the grass to be better kept up and nourished, and the addition of poop bag dispensers. This design reflects someone with a budget to spend rather than someone who uses this park every day. Call me any time and I can organize a focus group of dozens of people who would love to offer their input. [REDACTED]

I don't know anyone that was surveyed about this project. I've lived here for 45 years and know most everyone. Where did these crazy ideas come from - Not from the neighborhood.

I do have concerns about tall grass near the playgrounds. We're right at the foothills, so we get a lot of wild animals (deer, snakes, etc). I'd prefer the landscaping not include areas that will let snakes easily hid near the kid-friendly areas. Love the design otherwise!

I am quite disappointed and underwhelmed by this plan. People with families and children need functional amenities. I understand that there were a lot of older residents that didn't want any change do to fear of it attracting people to the park. But parks are supposed to be used by people of all ages. the east side has 1 park east of foothill. there are no good parks to take kids in the area, and adding a water wise garden is great but is not going to drive people to want to spend time at the park. We need to encourage engagement and health with our parks. this long park is great for walking and exercise. can we look at adding workout stations along the park? they should be very cheap, not visually impactful, and will serve as an amenity to encourage an active lifestyle for the high density housing and neighborhood seen around the park.

I am generally displeased with the proposal for Donner Park. It doesn't appear that you have consulted with the people who use the park on a regular basis. Perhaps you would consider a focus group. This is our neighborhood park where our neighborhood parents bring their children to play on the playground, people walk their dogs and kids play soccer on the open grass. We do not want this to become a destination. This is our small neighborhood park. I also take issue with the statement that . "The arrival of Mormon pioneers marked the beginning of the displacement of the Shoshone, Paiute, Goshute, and Ute Indigenous tribes from their ancestral lands". Why use divisive language and art rather than focus on the good relationships the pioneers had with the indigenous tribes? I am disappointed that a local artist who cares about Utah and our history was not chosen.

I am excited about planting more trees. I am not excited about the art pieces by Adam Kirby. Maybe they will grow on me.

I AM CONCERNED THAT THE MOST IMPORTANT ISSUE WITH THE PARK HAS NOT BEEN INCLUDED IN THE SURVEY: IMPROVE EXISTING AND FUTURE PARK LANDSCAPING, INCLUDING GRASS AND NOW POTENTIALLY ADDING OF GARDEN AREAS. I'M NOT CONFIDENT THAT AFTER THE FIRST YEAR WE WILL BE LOOKING AT WEEDS INSTEAD OF FLOWERS AND PLANTS. FOR THE PAST 20+ YEARS, THE PARK'S GRASS HAS BEEN NEGLECTED AS WELL AS CLEARING AND APPLYING SNOW MELT ON THE SIDEWALKS. I'M ALL IN FAVOR OF IMPROVEMENTS AND ENHANCEMENTS BUT PLEASE DON'T BUILD IT AND IGNORE IT. THANK YOU, [REDACTED]

How will the new layout be maintained? Mowing grass is easier than tending gardens. Any chance of getting restrooms?

How about a fenced area for dogs to run around. Not everyone goes to the area below. People bring their dogs to the park more than their children. A fenced area for dogs to run around would be ideal.

Don't change anything other than adding trees, etc.

Donner Park is part of one of the nicest urban forests in SLC and has remained so largely because it has escaped "improvements" like many in this plan. Far better would be to clean out the junk plants, debris, and fallen trees, and to avoid "development" as much as possible and support the return of the natural forest landscape. Playgrounds, paved walkways, "water-wise" plantings, "art installations," etc. offend people's natural instincts to enjoy nature. Features like that would be more appropriate downtown in Ryan Smith's Sports Entertainment District. Then people will know exactly where to go if they want to feel mocked by the city and the construction wealthy elite. Politics aside, a very important awareness is that the park offers one of the only areas in SLC/SLCo remotely akin to a dark night sky. Please do not put any additional lighting in! Also, please no additional pavement, no parking spaces, and no overflow accommodations for the zoo.

Don't ruin our park. I went to a meeting and hate every proposal. You certainly didn't ask anyone in the neighborhood for input.

Dogs often run free. What changes are proposed for safety of park goers?

Do not want the artwork! Interferes with use of park (cross country skiers and snow boarders in winter. It could also have some security concerns.) 100 tree grove is too many and not suited to park. Plantings interfere with use of the park and require maintenance (which we do not have.) Leave playgrounds where they are but update equipment. This survey does not adequately address the issues. We need a public meeting. Overall, this project is not what we want or need in our park. The park is very functional and meets our needs. Changes will not add to its beauty or functionality as our neighborhood park. Changes are ill advised!

Consider ease of access to amenities from parking areas. Water fountains, bathrooms?

Connect with Hogle Zoo and the new Wild Utah exhibit!!! Great opportunity to amplify the effect of this park improvement. Could include signage talking about pollinators, wildlife they may encounter and how to respect them.

Concern 1: It appears to get rid of the sledding hill. Kids frequently use the hill west of the westernmost (small kid) playground for sledding when there is enough snow. It is not too steep, there are few hazards, and there is plenty of open space at the bottom. Concern 2: Significant environmental and fiscal impact. It is unclear why Donner Park is being upgraded. The new design does not seem to result in significant change (there are already playgrounds, pathways, and benches/tables). To upgrade without a need seems wasteful. Concern 3: Potentially comes at expense of other projects. E.g., adding a wide sidewalk/bike path on the north side of Sunnyside between This is the Place and the additional zoo parking. Or adding a wide sidewalk/bike path on the east/south side of Wasatch between 1300E and the west side of Donner Park.

Born and raised up here. It's great now. Good grief leave it alone. All it needs is better/cleaner edging on the sidewalks. I don't know that it's ever been edged just mowed. Why fuss with things is somebody bored? If it works don't fix it.

1

Bathrooms. Splash pad. Pickle ball court. More family activities. This is the closest park for Emigration Canyon residents and it would be so nice to want to use it more. Please don't slant the new walking paths horizontally, the current ones are very uncomfortable to walk.

1

BATHROOMS!!!!!!!

1

Bathrooms would be really beneficial! I have little children and we would love to stay longer at the park, but it is challenging without a bathroom.

1

Add multiple Infant swings

1

A bathroom would be ideal. Aldo, accessible playground, no bark please.

1

40% of users indicated they use the park with their dog in the initial survey, a meager 3% supported fencing. Why was taking away off-leash access to the trails the very first project you did with the bond despite data that shows that was very much not in the interest of trail users? You guys are the WORST. Why even have surveys if you don't listen to the data?! FFS

1

1. Bike racks are a waste of money and space. People don't ride bikes here 2. Having crushed rock paths are going to be a joke, dogs, kids etc will scatter it all over and the cost to maintain and replenish it constantly is not well thought out nor sustainable 3. The Butterfly gardens and grasses are a beautiful idea, who is going to maintain this weekly? As an avid gardener these gardens can't just be planted and then let them grow so again when money is tight who will pay to maintain this? 4. The Art pieces are a great idea but these will be used a place teenagers ride over the top with bikes and sleds so I see these as an ineffective art display for the park and definitely a safety issue for the city. Try something that won't take up space or interfere with how the public and neighbors use the wide open space. 5. People like the park as is, it would be nice to have more tree's, trash cans and a few drinking fountains that work especially with a dog station, more benches and tables

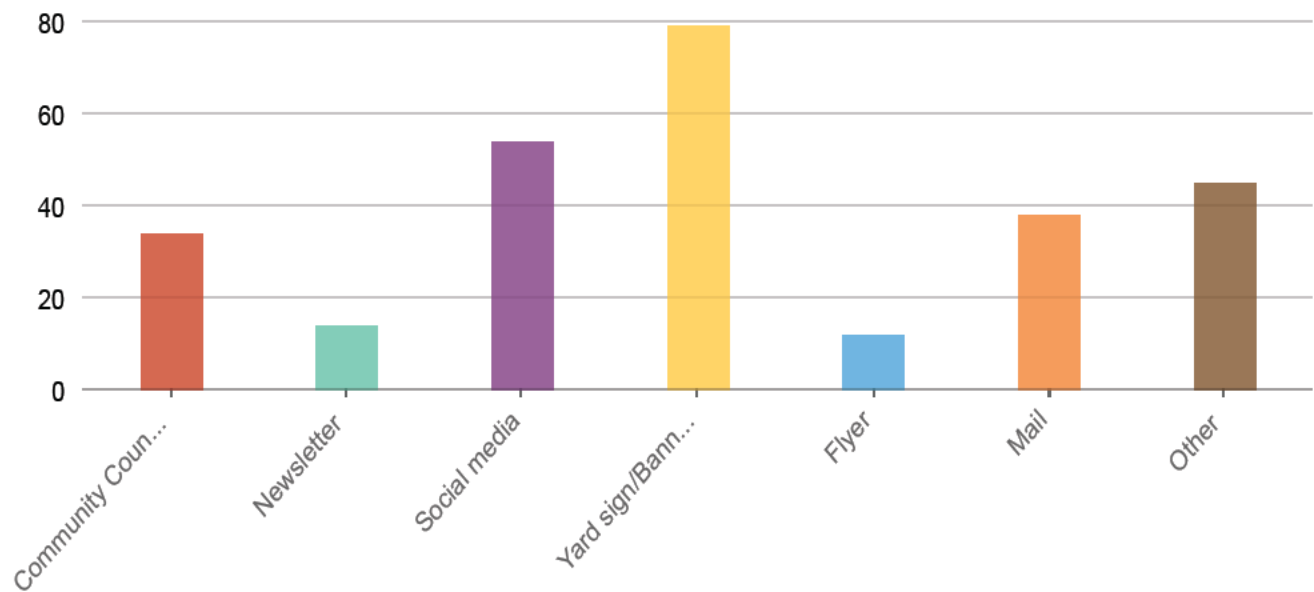
1

Please add speed bumps that will actually slow traffic! Right now people speed 40 mph to 50 mph up and down Kennedy all day long!

1

Answered: 117 Skipped: 116

#### How did you learn about this project?

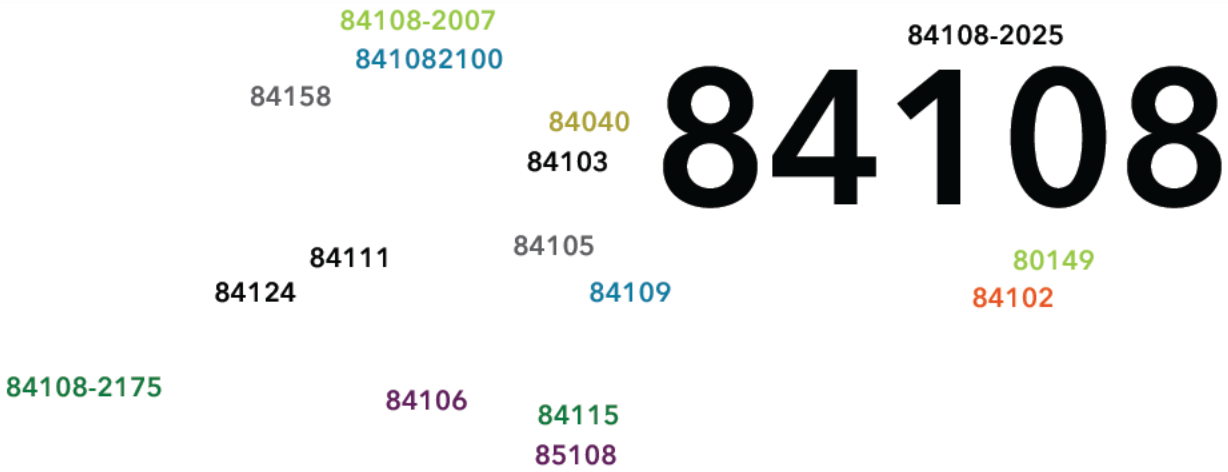


Answers	Count	Percentage
Community Council	34	14.59%
Newsletter	14	6.01%
Social media	54	23.18%
Yard sign/Banner	79	33.91%
Flyer	12	5.15%
Mail	38	16.31%
Other	45	19.31%

Answered: 225 Skipped: 8

What is your zip code?





Word	Count
84108	203
84105	3
84106	3
84109	3
84115	2
84124	2
80149	1
84040	1
84102	1
84103	1
84111	1
84158	1
85108	1
841082100	1

84108-2175

1

84108-2025

1

84108-2007

1

Answered: 227 Skipped: 6