

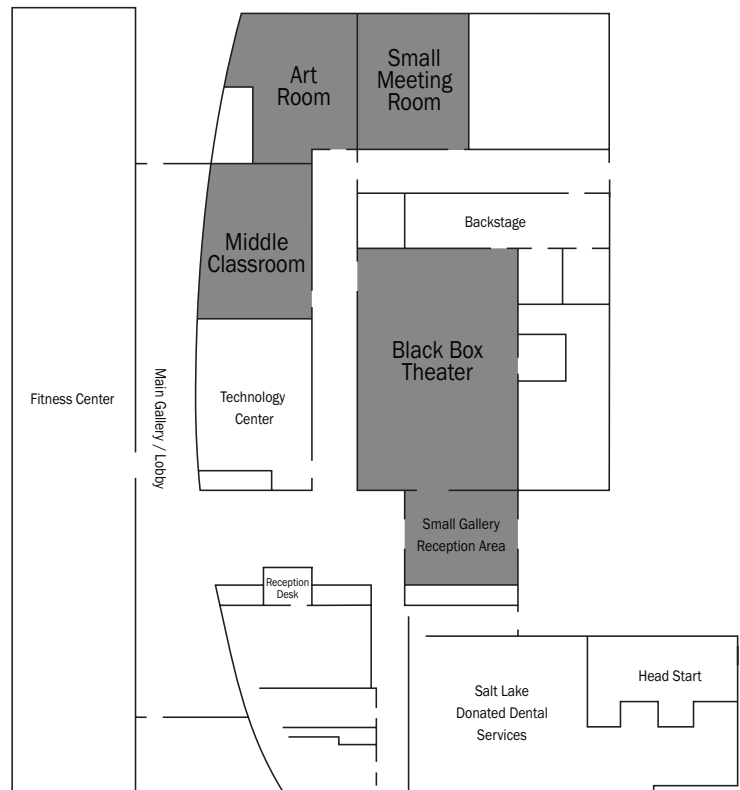
Sorenson Unity Center

1383 S 900 W, SLC, Utah 84104
 (801) 535-6533
 unitycenter@slcgov.com
 sorensonunitycenter.com

Meeting & Event Planning Guide

The Sorenson Unity Center offers space for meetings, performances and events to non-profit organizations, community groups, individuals and businesses. Please refer to this planning guide for building layout, room descriptions, attendance capacities and location information. Contact the Unity Center for more information and to request an Application for Use.

Hours of Operation
Monday - Thursday 9:00am - 9:00pm
Friday 9:00am - 8:00pm
Saturday 9:00am - 5:00pm
Sunday CLOSED

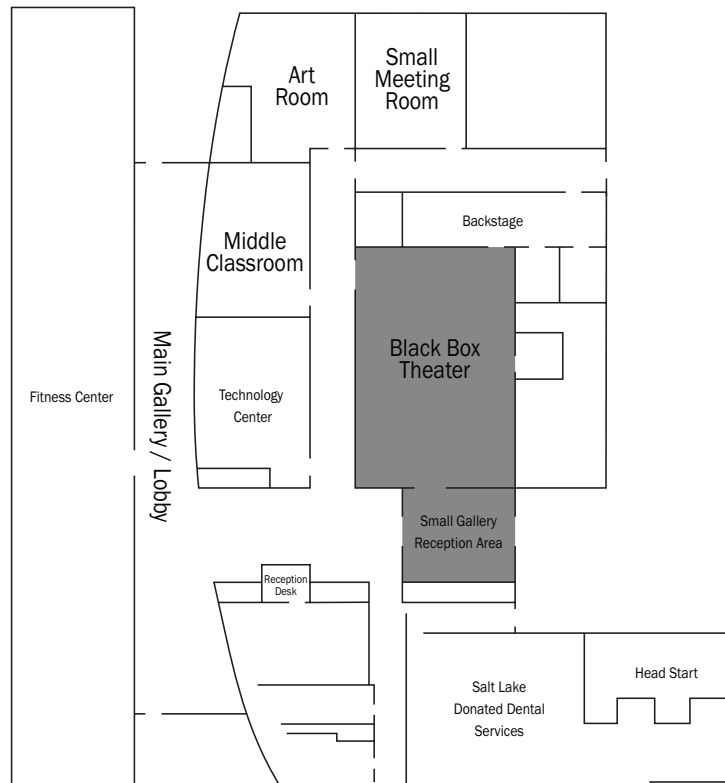


Room	SQ FT	Theater Style	Seated/Classroom	Standing/Reception
Black Box Theater	1811	125	80	150
Middle Classroom (#146)	808	40	30	
Small Meeting Room (#143)	556		20	
Art Room (#144)	692	30	20	
Full Facility				250

Black Box

The Black Box is ideal for music or dance performances, larger meetings, public events and private gatherings. There is a projection system with large drop-down screen and audio system.

Rates are for a minimum of 6-hours and vary depending on type of organization and type of event.



Theater Style Capacity: 125



Seated / Classroom Capacity: 80

Meeting Rooms

All meeting rooms have a computer with internet access and projection system with drop down screen.

All meeting rooms are rented by the hour.



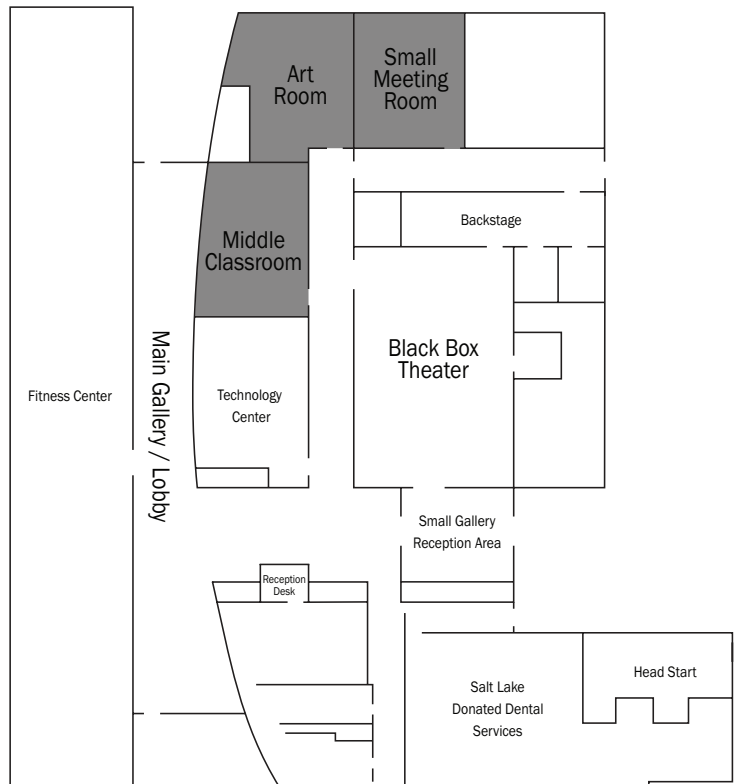
Art Room #144

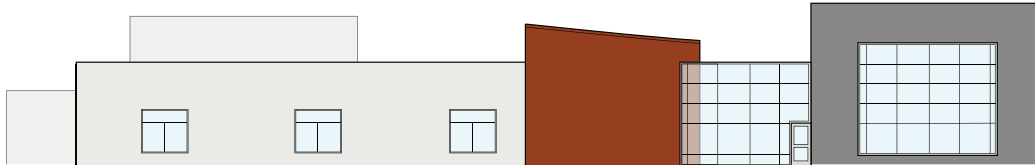


Small Meeting Room #143



Middle Classroom #146





Sorenson Unity Center

1383 S 900 W, SLC, Utah 84104
(801) 535-6533
unitycenter@slcgov.com
sorensonunitycenter.com

Parking

Parking is free and available in the lot south of the Unity Center (enter from 900 W.) Additional/overflow parking is available in the lot north of the Sorenson Multi-Cultural Center (enter from California Ave.)

Location & Map

