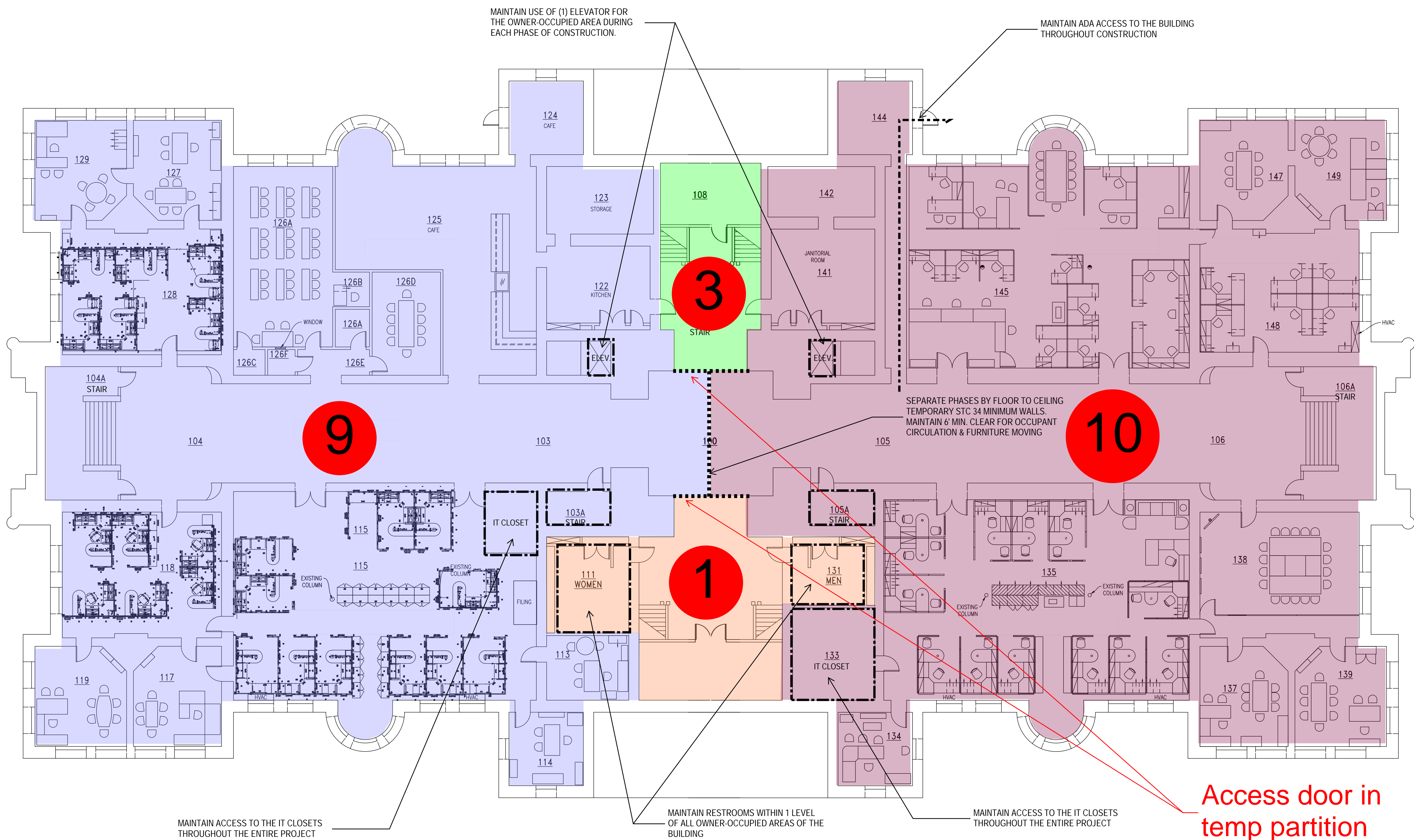


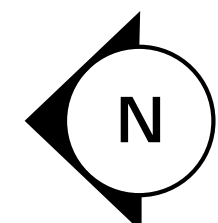
REVISIONS:

| | | |
|--|--|--|
| | | |
| | | |
| | | |
| | | |
| | | |
| | | |
| | | |
| | | |

| | | |
|--|--|----------|
| July 19 - Remove Art & Furniture October 10 - Work Complete | | PHASE 1 |
| October 19 - Remove Art & Furniture December 27 - Work Complete | | PHASE 3 |
| July 8, 2024 - Remove Art & Furniture Sept 12, 2024 - Work Complete | | PHASE 9 |
| August 1, 2024 - Remove Art & Furniture October 8, 2024 - Work Complete | | PHASE 10 |
| GENERAL NOTES: 1) CONSTRUCT THE REPAIR PROJECT IN PHASES. CONTRACTOR MUST OBTAIN CERTIFICATE OF OCCUPANCY FOR EACH PHASE. 2) MAINTAIN (2) MEANS OF EGRESS FOR THE OWNER-OCCUPIED SPACE DURING EACH PHASE OF CONSTRUCTION | | |



LEVEL 1



CONSTRUCTION DEVELOPMENT

SALT LAKE CITY AND COUNTY BUILDING SEISMIC REPAIRS

451 STATE ST.
SALT LAKE CITY, UT 84111

SALT LAKE CITY CORPORATION

451 STATE ST.
SALT LAKE CITY, UT 84111

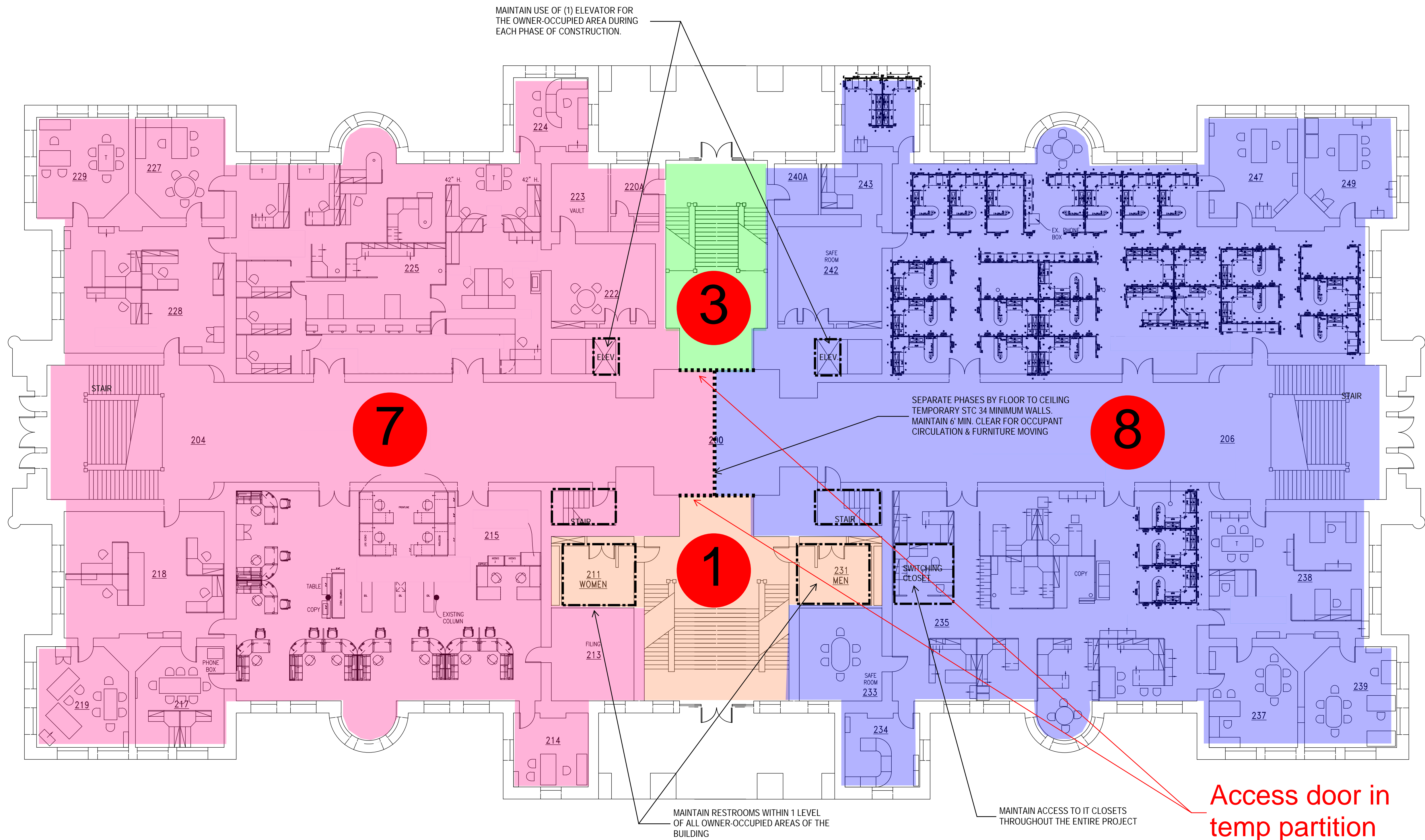
OWNER PROJECT NO.: FAC20044
GSBS PROJECT NO.: 2021.065.00
ISSUED DATE: 03/24/2023

PHASING LEVEL 1

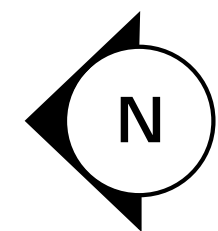
REVISIONS:

| | | |
|--|--|--|
| | | |
| | | |
| | | |
| | | |
| | | |
| | | |

| | | |
|--|--|---------|
| July 19 - Remove Art & Furniture October 10 - Work Complete | | PHASE 1 |
| October 19 - Remove Art & Furniture December 27 - Work Complete | | PHASE 3 |
| April 29, 2024 - Remove Art & Furniture July 5, 2024 - Work Complete | | PHASE 7 |
| May 22, 2024 - Remove Art & Furniture July 31, 2024 - Work Complete | | PHASE 8 |
| GENERAL NOTES: 1) CONSTRUCT THE REPAIR PROJECT IN PHASES. CONTRACTOR MUST OBTAIN CERTIFICATE OF OCCUPANCY FOR EACH PHASE. 2) MAINTAIN (2) MEANS OF EGRESS FOR THE OWNER-OCCUPIED SPACE DURING EACH PHASE OF CONSTRUCTION | | |



LEVEL 2



CONSTRUCTION DEVELOPMENT

SALT LAKE CITY AND COUNTY BUILDING SEISMIC REPAIRS

451 STATE ST.
SALT LAKE CITY, UT 84111

SALT LAKE CITY CORPORATION

451 STATE ST.
SALT LAKE CITY, UT 84111

OWNER PROJECT NO.: FAC20044
GSBS PROJECT NO.: 2021.065.00
ISSUED DATE: 03/24/2023

PHASING LEVEL 2

REVISIONS:

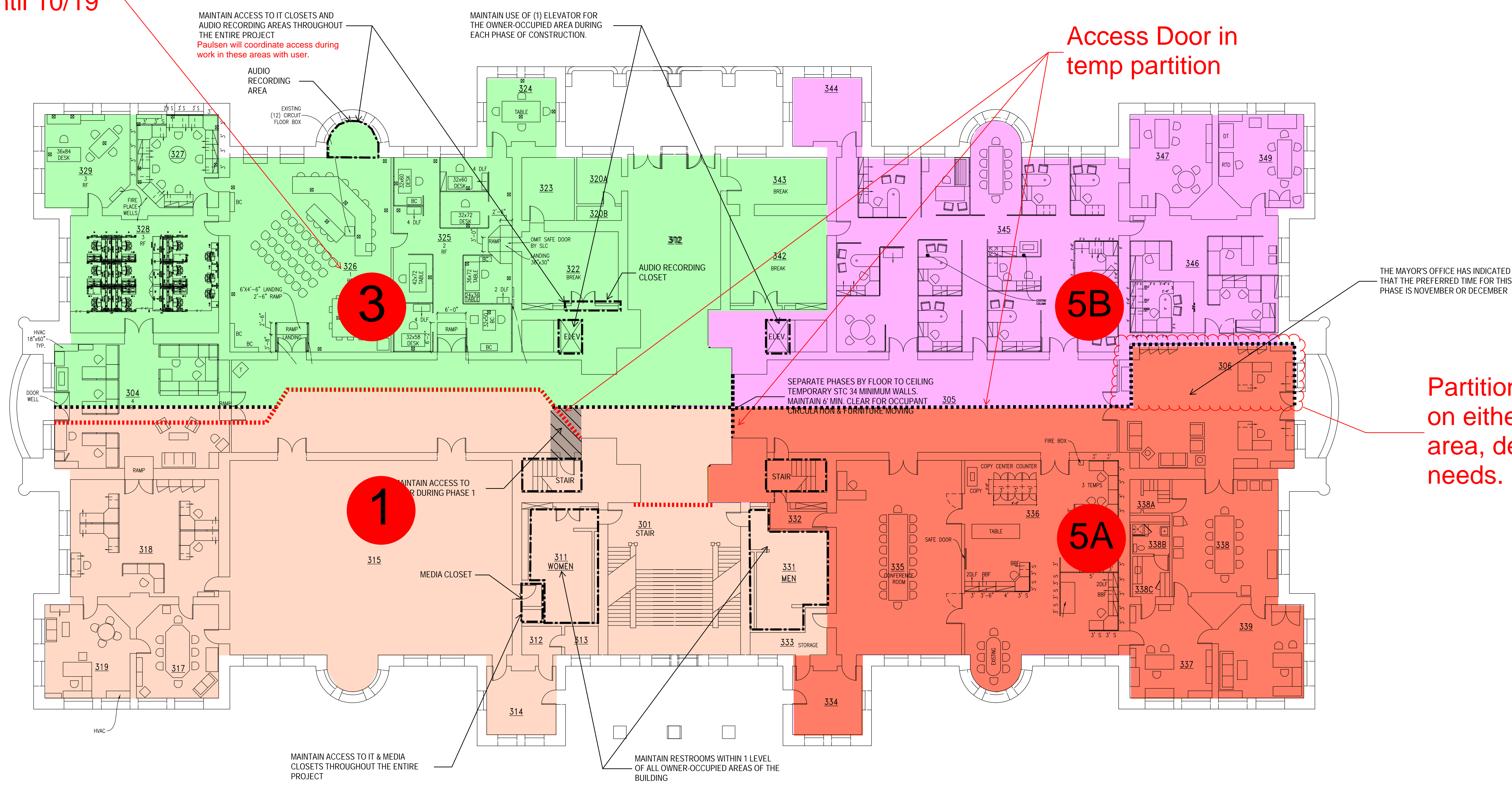
| | | |
|--|--|--|
| | | |
| | | |
| | | |
| | | |
| | | |
| | | |
| | | |

| | |
|---|----------|
| July 19 - Remove Art & Furniture October 10 - Work Complete | PHASE 1 |
| October 19 - Remove Art & Furniture December 22 - Work Complete | PHASE 3 |
| December 7 - Remove Art & Furniture February 13, 2024 - Work Complete | PHASE 5A |
| February 14 - Remove Art & Furniture April 26, 2024 - Work Complete | 5B |
| GENERAL NOTES: 1) CONSTRUCT THE REPAIR PROJECT PHASES. CONTRACTOR MUST OBTAIN CERTIFICATE OF OCCUPANCY FOR EACH PHASE. 2) MAINTAIN (2) MEANS OF EGRESS FOR THE OWNER-OCCUPIED SPACE DURING EACH PHASE OF CONSTRUCTION | |

Cannot start work until 10/19

Access Door in temp partition

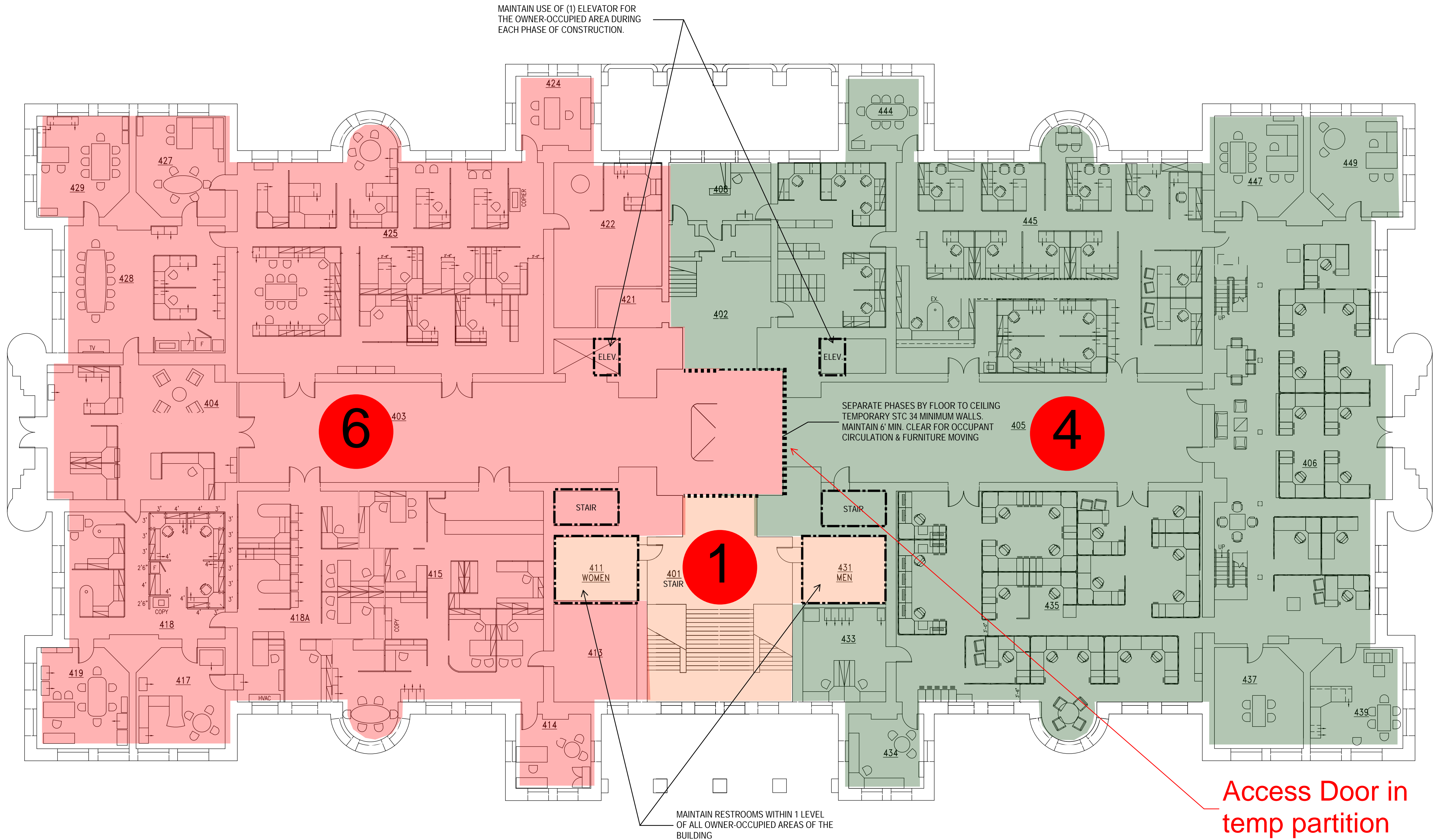
Partition could be placed on either side of open area, depending on user needs.



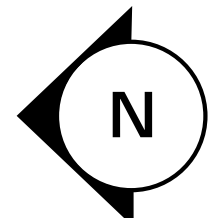
REVISIONS:

| | | |
|--|--|--|
| | | |
| | | |
| | | |
| | | |
| | | |
| | | |
| | | |

| | |
|--|---------|
| July 19 - Remove Art & Furniture October 10 - Work Complete | PHASE 1 |
| March 13, 2024 - Remove Art & Furniture May 16, 2024 - Work Complete | PHASE 6 |
| November 3 - Remove Art & Furniture January 12 - Work Complete | PHASE 4 |
| GENERAL NOTES: 1) CONSTRUCT THE REPAIR PROJECT IN PHASES. CONTRACTOR MUST OBTAIN CERTIFICATE OF OCCUPANCY FOR EACH PHASE. 2) MAINTAIN (2) MEANS OF EGRESS FOR THE OWNER-OCCUPIED SPACE DURING EACH PHASE OF CONSTRUCTION | |



LEVEL 4



CONSTRUCTION
DEVELOPMENT

SALT LAKE CITY
AND COUNTY
BUILDING SEISMIC
REPAIRS

451 STATE ST.
SALT LAKE CITY, UT 84111

SALT LAKE CITY
CORPORATION

451 STATE ST.
SALT LAKE CITY, UT 84111

OWNER PROJECT NO.:
GSBS PROJECT NO.:
ISSUED DATE:

FAC20044
2021.06.00
03/24/2023

PHASING LEVEL 4

| | |
|--|---------|
| August 28 - Remove Art & Furniture November 2 - Work Complete | PHASE 2 |
| GENERAL NOTES: 1) CONSTRUCT THE REPAIR PROJECT IN PHASES. CONTRACTOR MUST OBTAIN CERTIFICATE OF OCCUPANCY FOR EACH PHASE. 2) MAINTAIN (2) MEANS OF EGRESS FOR THE OWNER-OCCUPIED SPACE DURING EACH PHASE OF CONSTRUCTION | |

REVISIONS:

| | | |
|--|--|--|
| | | |
| | | |
| | | |
| | | |
| | | |
| | | |
| | | |

