



# 1300 EAST

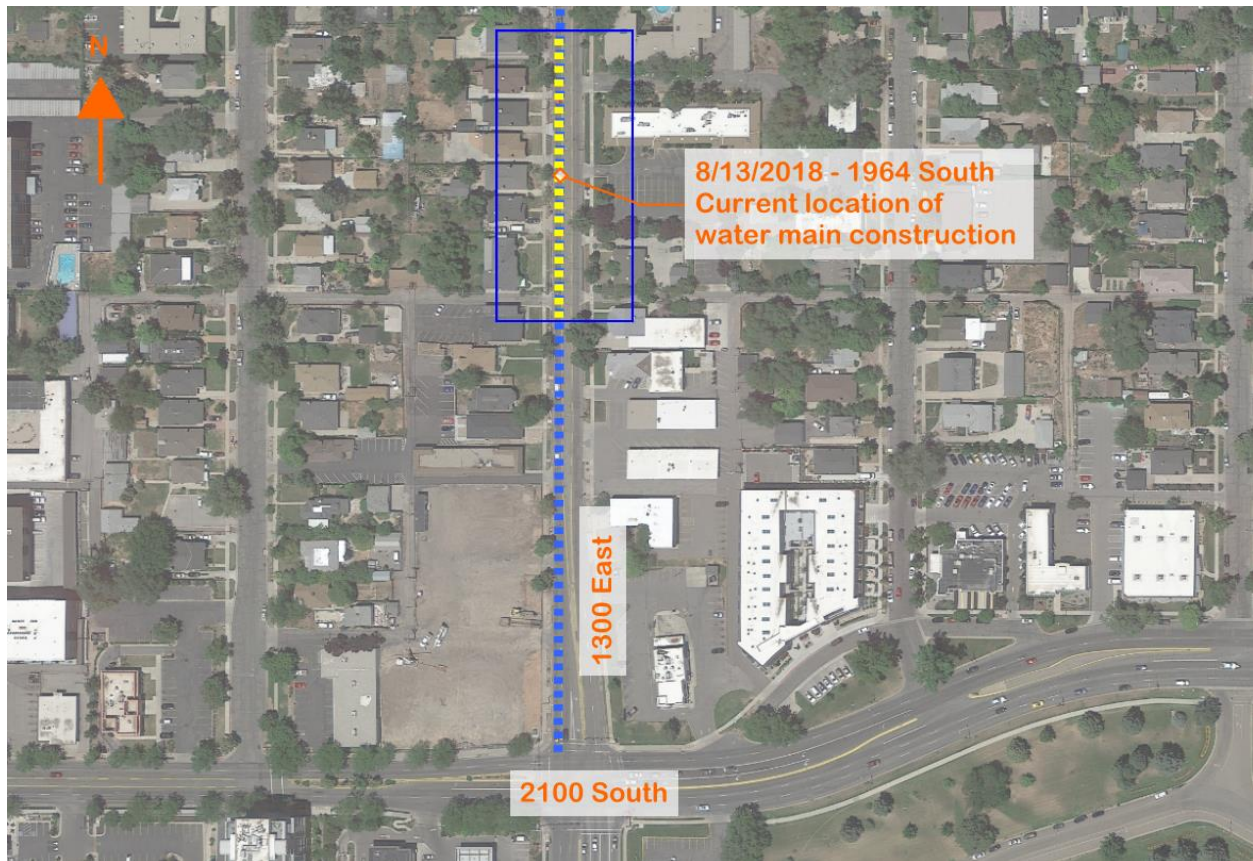


## RECONSTRUCTION



### 1300 East: 1300 South to 2100 South E-mail Update

Water main construction is underway and continues to head north on 1300 East. The 12” water main is being replaced on the West side of 1300 East at approximately 1964 South. The pavement has been restored on the corner of 1300 East and 2100 South near the CVS Pharmacy. The map below shows the current construction progress:



### Access

- Access to driveways may be limited. However, driveways can be steel plated to allow for access at any time during construction. For steel plates, please contact the Public Outreach Team by calling the project hotline, 801-483-6898.

### Traffic

- The center lane is being used for the southbound travel lane.
- There have been no road closures as a part of this project.
- No road closures or detours are anticipated in the current phase.

### UTA Bus Stops

- UTA bus stop number 126577 at approximately 2090 South is now open.
- UTA bus stop number 126576 at approximately 1960 South is closed.
- For more information regarding bus stops, please contact UTA customer service at 801-743-3882, or visit [www.facebook.com/rideUTA/](http://www.facebook.com/rideUTA/).

### Upcoming Events

Please join us at our project open house on Wednesday, August 15, from 6:00 pm – 8:00 pm at the Tanner Atrium, Westminster College 1840 South 1300 East, Salt Lake City, UT 84105. Project representatives will be available at this meeting to answer any of your questions and address your concerns. If you are unable to attend, informational materials will be available on the project website after the meeting.

### **How are we doing?**

Is there a specific issue we can address about the project?

Please let us know at one of these contact points:

**Construction hotline: 801-483-6898**

**Construction website: [www.slcc.gov/mystreet/1300east/](http://www.slcc.gov/mystreet/1300east/)**