



1300 EAST

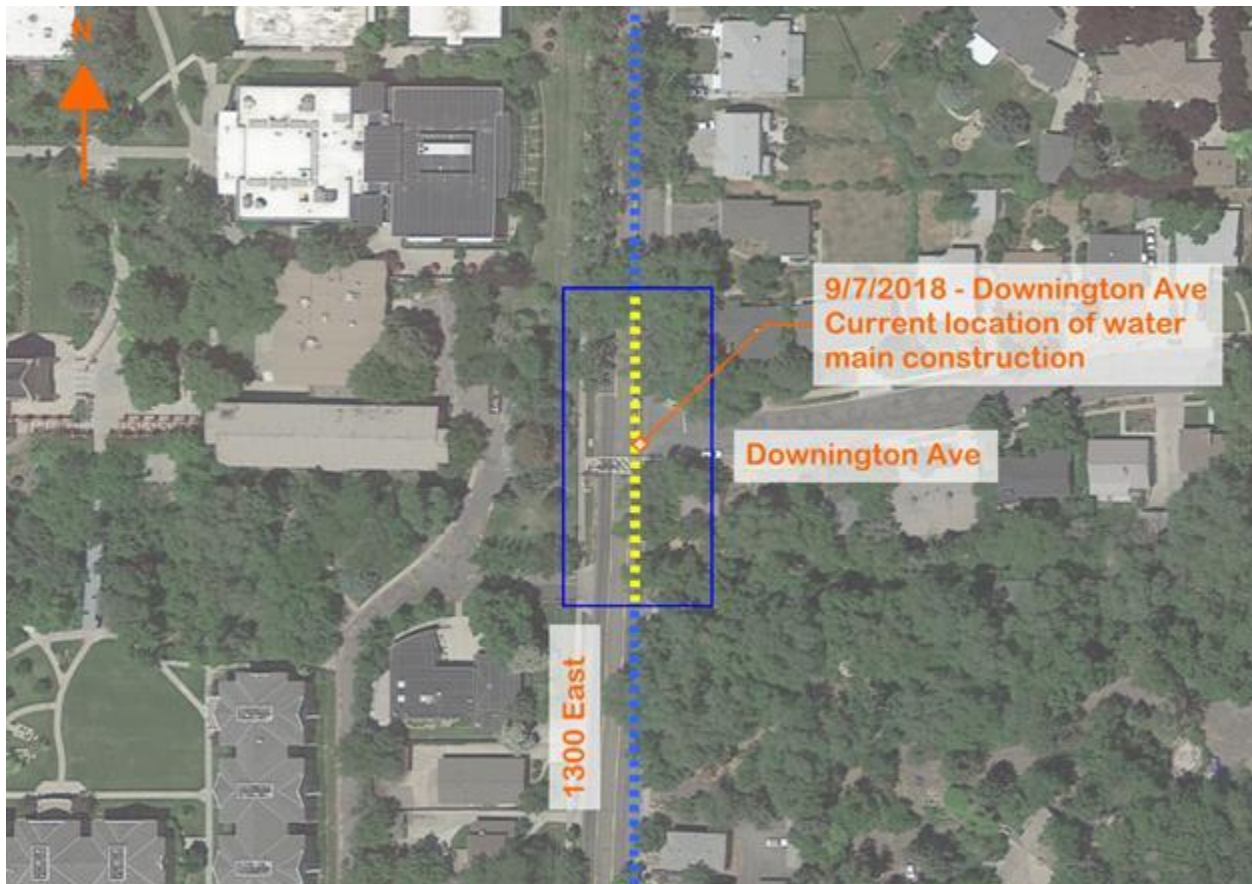


RECONSTRUCTION



1300 East: 1300 South to 2100 South 9/10/2018 Construction Update

Water main construction is underway and continues to head north on 1300 East. The 8" water main is being replaced on the East side of 1300 East at Downington Avenue (1850 South). The map below shows the current construction progress:



Access

- Access to driveways may be limited. However, driveways can be steel plated to allow for access at any time during construction. For steel plates, please contact the Public Outreach Team by calling the project hotline, 801-483-6898.

Traffic

- The center lane is being used for the southbound travel lane, with a minor deviation near the intersection of Downington Ave.
- There have been a few road-closures between 9pm and 6am for crucial intersection night-work.
- No road closures or detours are anticipated in the current section.

Water Shutdowns

- No water shutdowns are anticipated but may happen periodically if emergency situations are encountered that absolutely require a shutdown.

UTA Bus Stops

- UTA bus stop number 126576 at approximately 1960 South is now open.
- UTA bus stop number 126574 at approximately 1840 South is closed.
- UTA bus stop number 126575 at approximately 1888 South is closed.
- For more information regarding bus stops, please contact UTA customer service at 801-743-3882, or visit www.facebook.com/rideUTA/.

How are we doing?

Is there a specific issue we can address about the project?

Please let us know at one of these contact points:

Construction hotline: 801-483-6898

Construction website: www.slco.gov/mystreet/1300east/