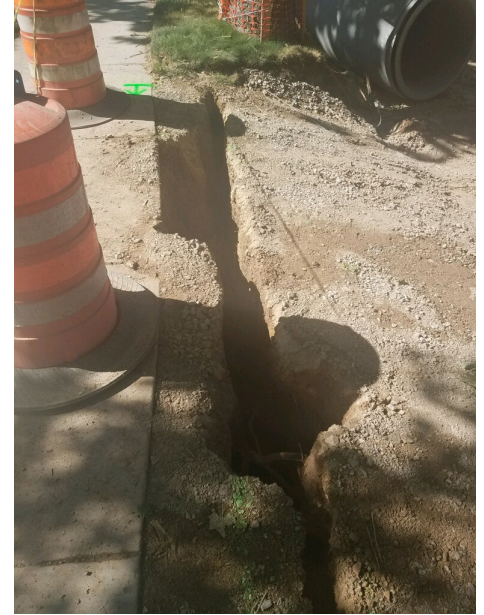


# 1300 EAST CONSTRUCTION UPDATE

JULY 12, 2019

## Upcoming Work Activities

- Crews continue to place granular borrow along the east side of the work area. Granular borrow is the first section of the new road that will be installed.
- The west side of the work area is scheduled for demolition and road excavation beginning July 17. Granular borrow placement on this side of the roadway will begin toward the end of the month.
- Storm drain installation will take place throughout the closed section of 1300 East, as well as across the 2100 South/1300 East intersection. Intersection work will take place mainly at night. This activity will continue through early August.
- Fiber line installation is underway, and will continue through mid-July. Night work on the fiber line is scheduled for July 17, beginning at 1 a.m.
- Some sewer laterals requiring replacement will be worked on starting this week for the next few months. Construction crews will be working with property owners to coordinate this work. This work will run concurrently with the storm drain installation.
- Curb, gutter, sidewalk, and driveway approach replacement is expected to take place starting the first week of August.



## Traffic Alerts

- Local residents accessing their homes in the closed area of 1300 East are reminded that traffic now flows **ONLY NORTHBOUND** from 2100 South to Westminster Avenue. For homes located between 2100 South and Westminster Avenue, please enter the work zone off of 2100 South, and then travel north to your home. When leaving, please head northbound to Westminster Avenue.
- Please note that there may be occasional delays for entering the work zone at 2100 South when trucks have to be loaded or unloaded there. At those times, expect between 5-15 minute delays.

## Safety:

- Motorists are reminded to watch out for trucks entering and leaving the work zone. Please make eye contact with operators before passing any equipment. This will help ensure that you are safe and clear to pass. Also, please mind the flaggers that are assisting with the safe flow of traffic.
- Please be aware of open holes and steep ledges that are being generated from work on the sewer lines. These hazards will be barricaded off, and marked by construction barrels and caution tape. To ensure your safety and the safety of those working on site, please do not move these barricades.

*\*Schedule is subject to change due to weather or unforeseen circumstances.*

## Contact Us

Email: [1300east@slcgov.com](mailto:1300east@slcgov.com) | Hotline: 801-483-6898

Website: [www.slc.gov/mystreet/1300east](http://www.slc.gov/mystreet/1300east)

