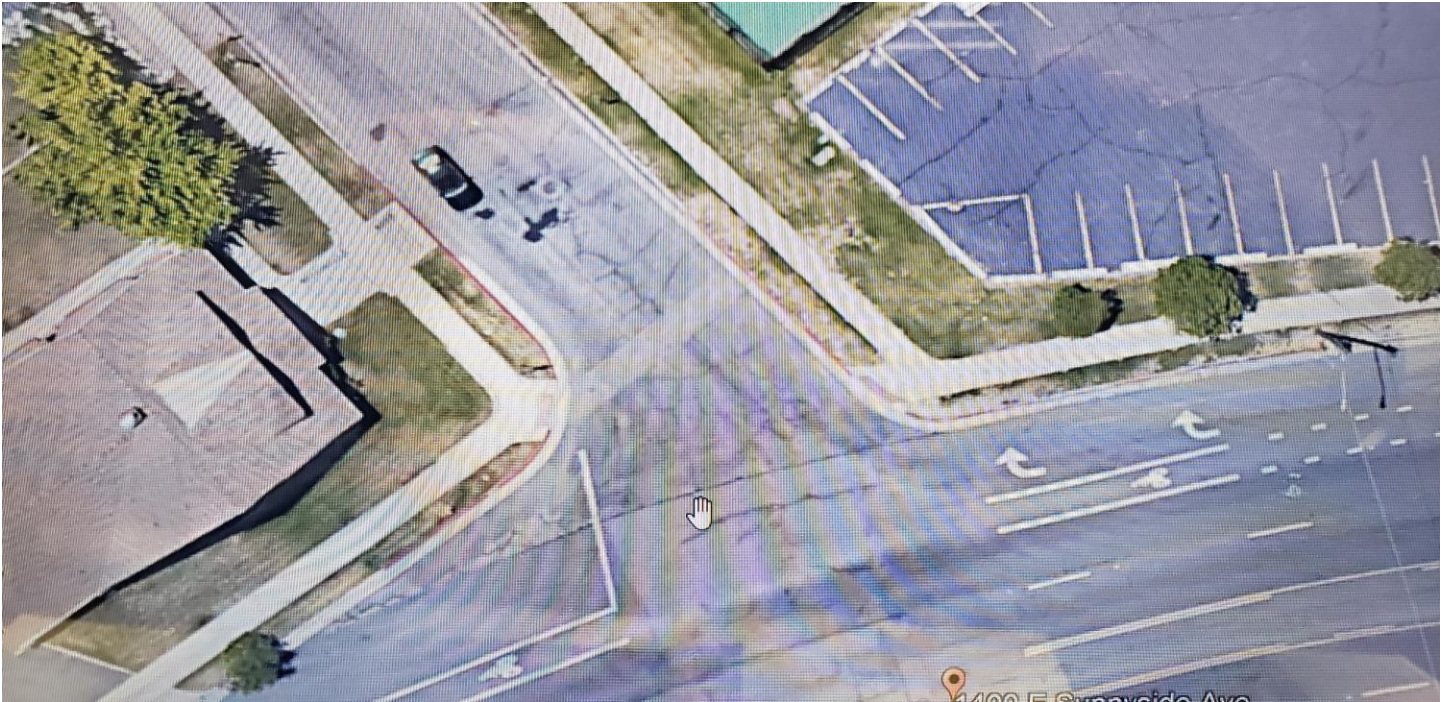


# Sunnyside Avenue and 1400 East Intersection Reconfiguration



## CONSTRUCTION UPDATE | August 9, 2019

We are reconfiguring the Sunnyside Avenue and 1400 East intersection to improve safety and visibility for all travelers. These are the activities we'll work on over the next three weeks\*:

- On Monday, August 12, we'll begin to place traffic control devices at the intersection to delineate the work zone and protect construction crews and equipment.
- Please obey all traffic signs and safety control devices throughout the project area.
- Next week, we'll also begin demolition and reconstruction activities by the school's tennis courts. Once work in this area is completed, we'll transition to reconstruct the east side of the intersection.

\*Work is expected Monday through Friday from 8 a.m. to 5 p.m. and is subject to change due to weather or unforeseen circumstances.

## CONTACT INFORMATION:

Email: [engineeringinfo@slcgov.com](mailto:engineeringinfo@slcgov.com) | Website: [www.slcgov.com/mystreet](http://www.slcgov.com/mystreet)

- Adan Carrillo, SLC Civic Engagement Manager 801-535-6251
- Parker Bradley, SLC Project Engineer: 801-535-7235
- Steve Rollins, Bowen Construction Manager: 801-671-9058

