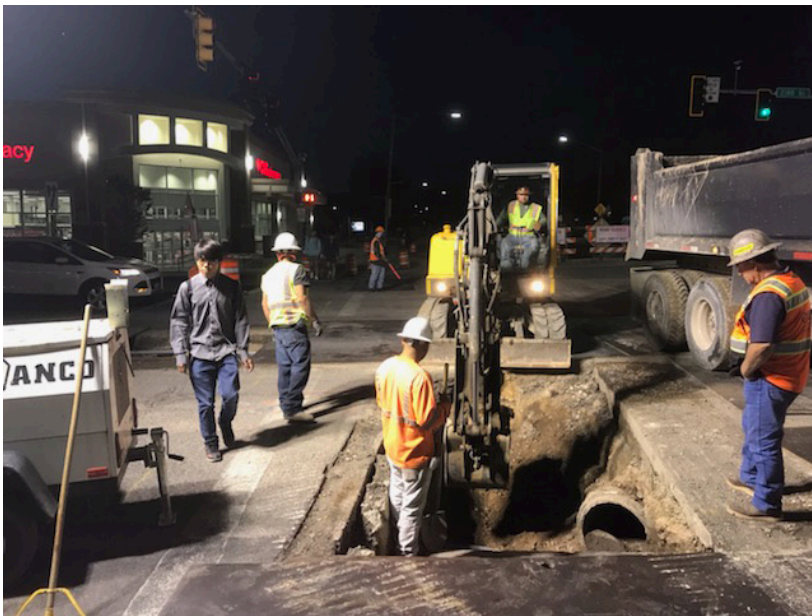


# 1300 EAST CONSTRUCTION UPDATE

SEPTEMBER 20, 2019

## Upcoming Work Activities:

- Concrete placement for Phase 1 is 75% complete. Curb, gutter, sidewalk, and driveway approach replacement will continue along both sides of the roadway through late-September 2019. We remind residents and pedestrians not to walk or drive on newly-poured concrete, as it requires several days of cure time.
- Asphalt paving is tentatively scheduled to begin the first week of October.
- Storm drain installation is nearly complete. Night shifts in the 2100 South/1300 East intersection, including pipe installation and paving back over the trenches, are planned to conclude by Wednesday, September 25. No night work will take place on the weekends.
- Sign installation will take place intermittently over the next few weeks.
- Landscape restoration along the project corridor is underway, and will continue intermittently through the end of November.



## Traffic Alerts:

- Motorists are advised of changing traffic patterns at the 2100 South/1300 East intersection over the next week, to accommodate storm drain work. Please use caution driving through the area, and mind the traffic control devices in place to guide you safely through the intersection.
- Local residents accessing their homes in the closed area of 1300 East are reminded that traffic flows **ONLY NORTHBOUND** from 2100 South to Westminster Avenue. For homes located between 2100 South and Westminster Avenue, please enter the work zone off of 2100 South, and then travel north to your home. When leaving, please head northbound to Westminster Avenue.

## Resident Information:

- Thank you for your help in getting trash cans to the west side of the roadway for pick-up over the last several months. We have reached a point in the project where we will be able to accommodate garbage trucks on BOTH sides of the roadway again. **Beginning on next week's pick-up date, September 25, please resume placing your garbage can on your own side of the street, at the curb, like you did before construction started.**

## Safety:

- Pedestrians walking through the construction zone are reminded that even though the road is closed to the public, residential traffic and construction vehicles are still actively driving in the area. For your safety, please only cross the road at designated crossing areas.
- Motorists are reminded to watch out for trucks entering and leaving the work zone. Please make eye contact with operators before passing any equipment. This will help ensure that you are safe and clear to pass. Also, please mind the flaggers that are assisting with the safe flow of traffic.

*\*Schedule is subject to change due to weather or unforeseen circumstances.*

## Contact Us

Email: [1300east@slcgov.com](mailto:1300east@slcgov.com) | Hotline: 801-483-6898

Website: [www.slc.gov/mystreet/1300east](http://www.slc.gov/mystreet/1300east)

