

1300 EAST CONSTRUCTION UPDATE

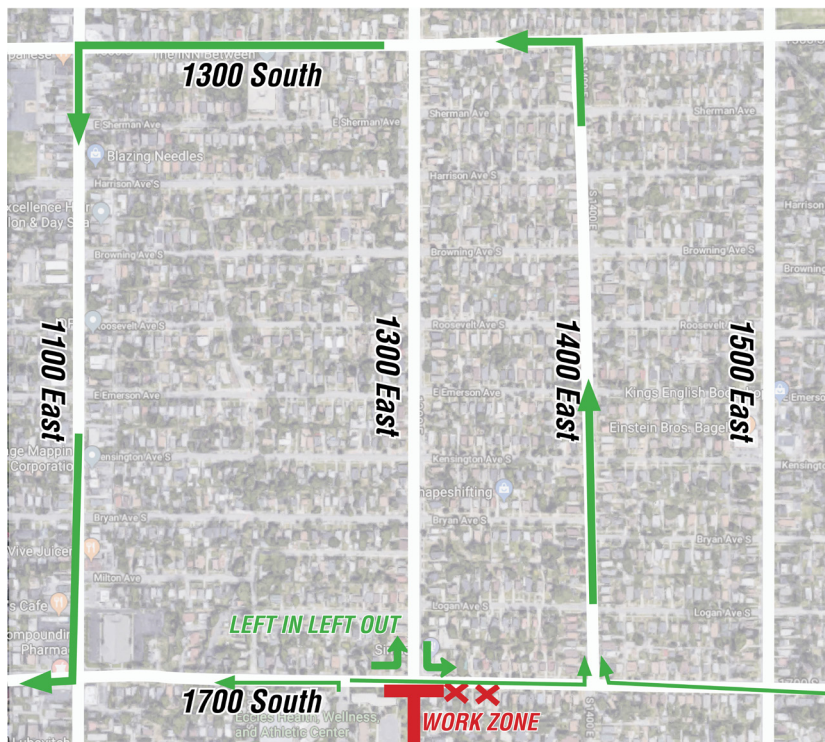
SEPTEMBER 27, 2019

Upcoming Work Activities:

- Concrete placement for Phase 1 is 90% complete. Curb, gutter, sidewalk, and driveway approach replacement will continue along both sides of the roadway through the end of September 2019. We remind residents and pedestrians not to walk or drive on newly-poured concrete, as it requires several days of cure time.
- Asphalt paving is tentatively scheduled to begin next Friday, October 4, weather depending.
- Striping on the new roadway is tentatively scheduled to begin on Monday, October 7, depending on paving progress.
- Storm drain installation at the 2100 South/1300 East intersection is nearly complete. Crews will finish remaining pipe installation, pave over the existing trenches, and remove plates from the roadway over the next week. No night work will take place on the weekends.
- Storm drain installation is now underway in the 1700 South/1300 East intersection. This work will take place during day-time hours, and will take between three to four weeks to complete.
- Sign installation will take place intermittently over the next few weeks.
- Landscape restoration along the project corridor is underway, and will continue intermittently through the end of November.

Traffic Alerts:

- To accommodate storm drain work in the 1700 South/1300 East intersection, **westbound movements THROUGH THE INTERSECTION are closed.** West-bound movements down 1700 South from Westminster College will continue as usual. Motorists will need to detour to 1400 East, down 1300 South, and then use 1100 East to get back to west-bound 1700 South. (See map.) This detour is expected to be in place between three to four weeks, though **traffic patterns are subject to change as work progresses.** Resident access will be maintained during this work.



- Motorists are advised of changing traffic patterns at the 2100 South/1300 East intersection over the next week, to accommodate storm drain work. Please use caution driving through the area, and mind the traffic control devices in place to guide you safely through the intersection.

Safety:

- Pedestrians walking through the construction zone are reminded that even though the road is closed to the public, residential traffic and construction vehicles are still actively driving in the area. For your safety, please only cross the road at designated crossing areas.
- Motorists are reminded to watch out for trucks entering and leaving the work zone. Please make eye contact with operators before passing any equipment. This will help ensure that you are safe and clear to pass. Also, please mind the flaggers that are assisting with the safe flow of traffic.

Contact Us

**Schedule is subject to change due to weather or unforeseen circumstances.*

Email: 1300east@slcgov.com | Hotline: 801-483-6898

Website: www.slc.gov/mystreet/1300east



1300 EAST
RECONSTRUCTION

