

1300 EAST CONSTRUCTION UPDATE

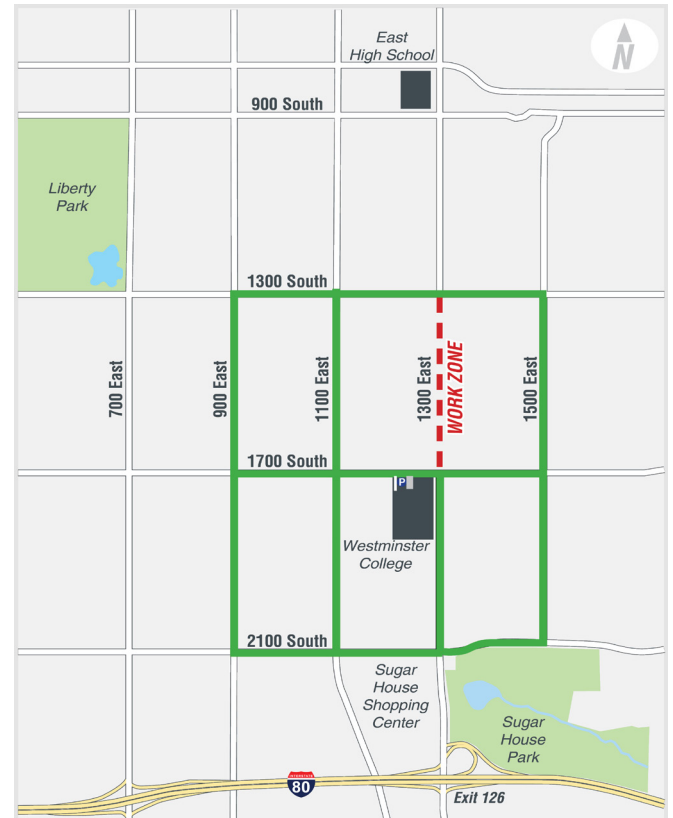
MAY 8, 2020

1300 East from 1700 South to 1300 South will CLOSE to all through-traffic on Monday, May 18.

Suggested detour routes include: 1300 South, 1700 South, and 2100 South to 1500 East, 1100 East, or 900 East (see map).

Upcoming Work Activities:

- On Monday, May 18, crews will begin lowering utilities in the roadway to prepare for asphalt removal. This process will take about two days to complete.
- Crews will then remove all of the old asphalt between 1700 South and 1300 South, which is expected to last through the weekend.
- The week of May 25, crews will begin excavation activities, including the removal of the concrete layer on the east side of the road. This process will take up to two weeks to complete. Curb and gutter will be removed at the same time as the concrete layer of the road.
- **During concrete removal, residents may experience increased vibrations due to construction equipment. To avoid damages to personal property, please remove fragile/breakable things from walls and horizontal surfaces during construction.**
- Storm drain installation is expected to start early June.



Legend:

Red: 1700-1300 South Closure
Green: Detour Routes

Safety:

- We remind residents accessing their homes in the closed area of 1300 East to drive slowly through the work zone and use caution. Remember, **ONLY SOUTHBOUND** traffic is allowed from 1300 South to 1700 South once construction is underway. Please be attentive to the changing work zone conditions.
- Pedestrians will still be able to use the sidewalks in the workzone, but please remember that this is an active construction zone. For your safety, **please stay on the sidewalk and only cross the road at designated crossing areas** to avoid tripping hazards throughout the closed area. Always make eye contact with equipment operators before proceeding into the area to ensure that they see you.
- During construction, motorists are reminded to watch out for trucks entering and leaving the work zone, and to follow directions from flaggers on-site assisting with the safe flow of traffic.

**Schedule is subject to change due to weather or unforeseen circumstances.*

Contact Us

Email: 1300east@slcgov.com | Hotline: 801-483-6898

Website: www.slc.gov/mystreet/1300east



1300 EAST
RECONSTRUCTION

