

DRAFT - REVIEW ONLY
NOT FOR CONSTRUCTION



Existing striping to be removed.

transition point

transition point

General Sheet Notes

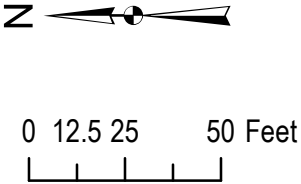
Please call Scott Vaterlaus
at 801-535-6630 to verify striping
layout prior to painting.

**NOTICE REQUIRED AT LEAST
2 DAYS PRIOR TO INSTALLATION.**

Sign and bicycle symbol locations
will be reviewed by Salt Lake City
Transportation Division staff after striping
is complete. Please schedule at least
2 business days prior to installation.

Layout Notes

All dimensions from EDGE of ASPHALT.
Tab points shown with green dot.
General striping layout approach: find centerline (and tab),
measure off centerline,
extra width to remain in parking



PREPARED BY:



**SALT LAKE CITY
CORPORATION**
COMMUNITY AND
NEIGHBORHOODS
DIVISION of TRANSPORTATION
349 SOUTH 200 EAST, SUITE 150 SALT
LAKE CITY, UTAH 84111-5502
TELEPHONE: 801-535-6630
FAX: 801-535-6019
E-MAIL: WWW.SLCGOV.COM

PROFESSIONAL SEAL:

PROJECT IDENTIFICATION:

200 East
Resurfacing
Project
ver. D

Date: 6/2/2021

PROJECT OWNER:

**SALT LAKE CITY
CORPORATION**
451 SOUTH STATE STREET
SALT LAKE CITY, UTAH 84111-2836
WWW.SLCGOV.COM

REV	DATE	DESCRIPTION

ENG. JOB #:
P.U. JOB # **N/A**
FAS NO.:
PREPARED BY: **SLC CORP.**
DRAWING FILE NAME:

DRAWN BY:
CHECKED BY:

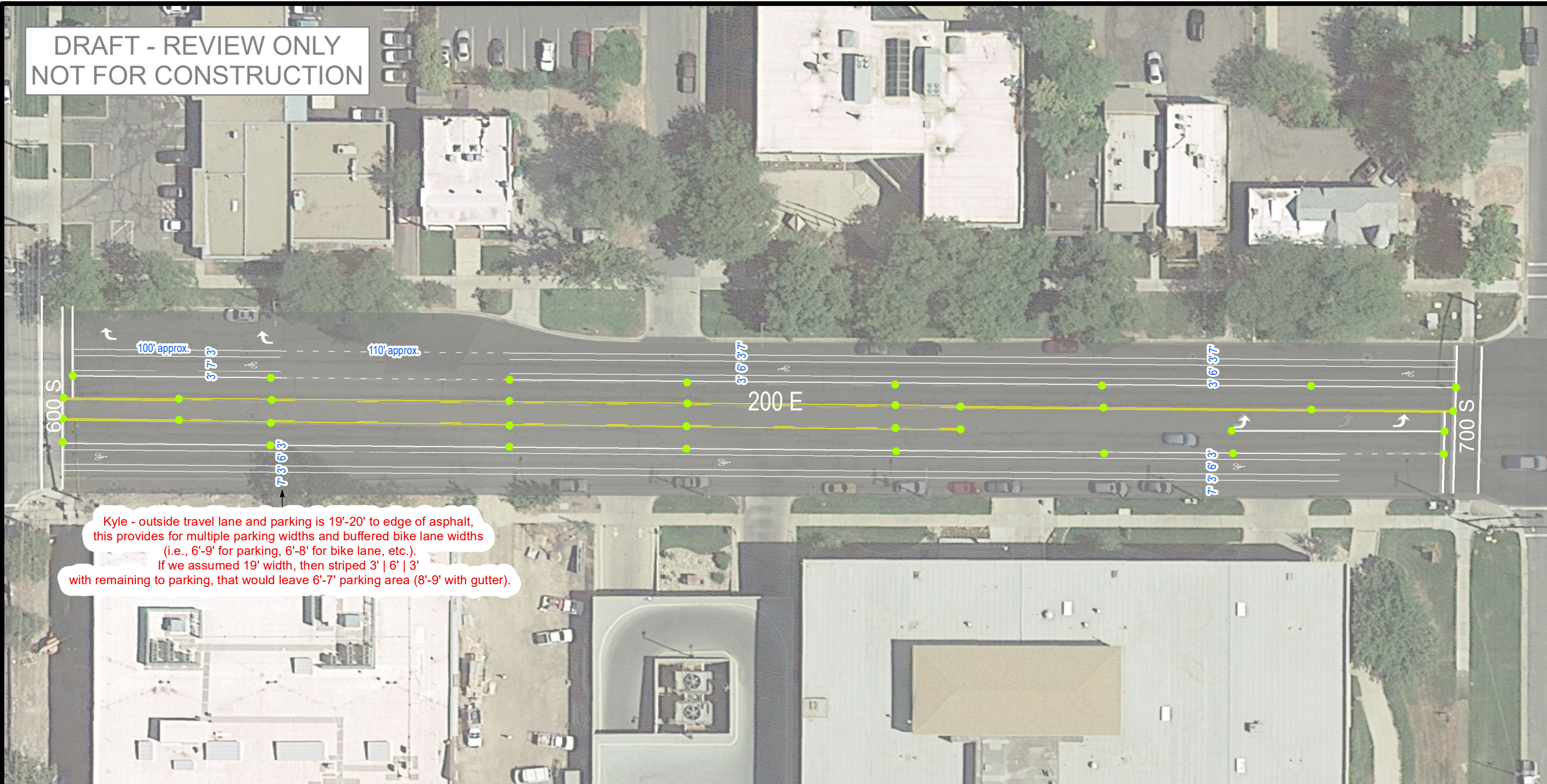
SHEET TITLE:

Striping Plan

SHEET IDENTIFIER:

Sheet 1/4
BINDING
ORDER

DRAFT - REVIEW ONLY
NOT FOR CONSTRUCTION



Kyle - outside travel lane and parking is 19'-20' to edge of asphalt, this provides for multiple parking widths and buffered bike lane widths (i.e., 6'-9' for parking, 6'-8' for bike lane, etc.).
If we assumed 19' width, then striped 3' | 6' | 3' with remaining to parking, that would leave 6'-7' parking area (8'-9' with gutter).

General Sheet Notes

Please call Scott Vaterlaus
at 801-535-6630 to verify striping
layout prior to painting.

**NOTICE REQUIRED AT LEAST
2 DAYS PRIOR TO INSTALLATION.**

Sign and bicycle symbol locations
will be reviewed by Salt Lake City
Transportation Division staff after striping
is complete. Please schedule at least
2 business days prior to installation.

Layout Notes

All dimensions from EDGE of ASPHALT.

Tab points shown with green dot.

General striping layout approach: find centerline (and tab),
measure off centerline,
extra width to remain in parking



0 12.5 25 50 Feet

PREPARED BY:



**SALT LAKE CITY
CORPORATION**

COMMUNITY AND
NEIGHBORHOODS

DIVISION of TRANSPORTATION

349 SOUTH 200 EAST, SUITE 150 SALT
LAKE CITY, UTAH 84111-5502
TELEPHONE: 801-535-6630
FAX: 801-535-6019
E-MAIL: WWW.SLCGOV.COM

PROFESSIONAL SEAL:

PROJECT IDENTIFICATION:

200 East
Resurfacing
Project
ver. D

Date: 6/2/2021

PROJECT OWNER:

**SALT LAKE CITY
CORPORATION**

451 SOUTH STATE STREET
SALT LAKE CITY, UTAH 84111-2836
WWW.SLCGOV.COM

REV	DATE	DESCRIPTION

ENG. JOB #:

P.U. JOB #: N/A

FAS NO.:

PREPARED BY: SLC CORP.

DRAWING FILE NAME:

DRAWN BY:

CHECKED BY:

SHEET TITLE:

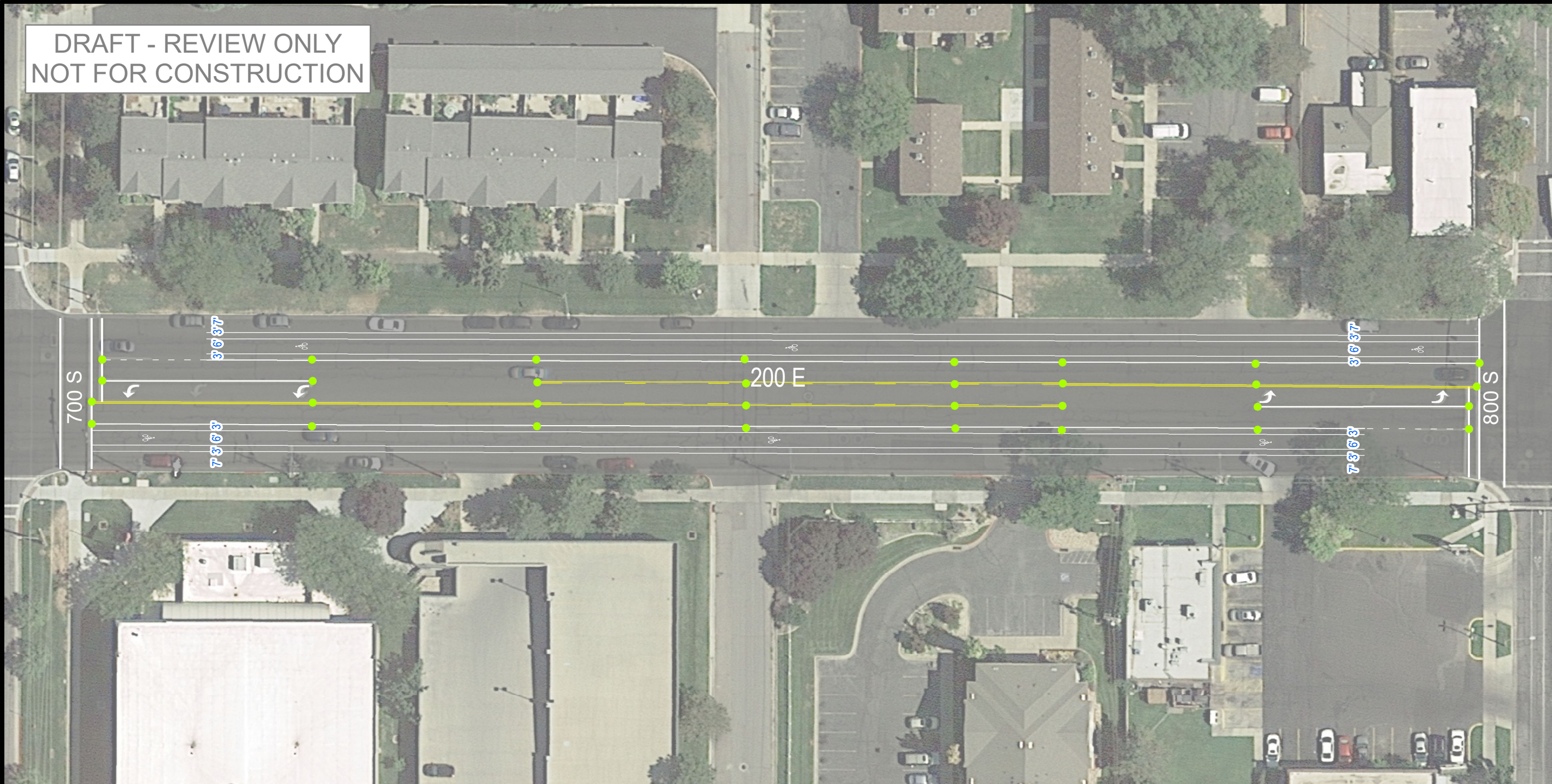
Striping Plan

SHEET IDENTIFIER:

Sheet 2/4

BINDING
ORDER

DRAFT - REVIEW ONLY
NOT FOR CONSTRUCTION



General Sheet Notes

Please call **Scott Vaterlaus**
at **801-535-6630** to verify striping
layout prior to painting.

**NOTICE REQUIRED AT LEAST
2 DAYS PRIOR TO INSTALLATION.**

Sign and bicycle symbol locations
will be reviewed by Salt Lake City
Transportation Division staff after striping
is complete. Please schedule at least
2 business days prior to installation.

Layout Notes

All dimensions from EDGE of ASPHALT.

Tab points shown with green dot.

General striping layout approach: find centerline (and tab),
measure off centerline,
extra width to remain in parking



0 12.5 25 50 Feet

PREPARED BY:



**SALT LAKE CITY
CORPORATION**

**COMMUNITY AND
NEIGHBORHOODS**

DIVISION of TRANSPORTATION

349 SOUTH 200 EAST, SUITE 150 SALT

LAKE CITY, UTAH 84111-5502

TELEPHONE: 801-535-6630

FAX: 801-535-6019

E-MAIL: WWW.SLCGOV.COM

PROFESSIONAL SEAL:

PROJECT IDENTIFICATION:

200 East
Resurfacing
Project
ver. D

Date: 6/2/2021

PROJECT OWNER:

**SALT LAKE CITY
CORPORATION**

451 SOUTH STATE STREET
SALT LAKE CITY, UTAH 84111-2836
WWW.SLCGOV.COM

REV	DATE	DESCRIPTION

ENG. JOB #:

P.U. JOB #: **N/A**

FAS NO.:

PREPARED BY: **SLC CORP.**

DRAWING FILE NAME:

DRAWN BY:

CHECKED BY:

SHEET TITLE:

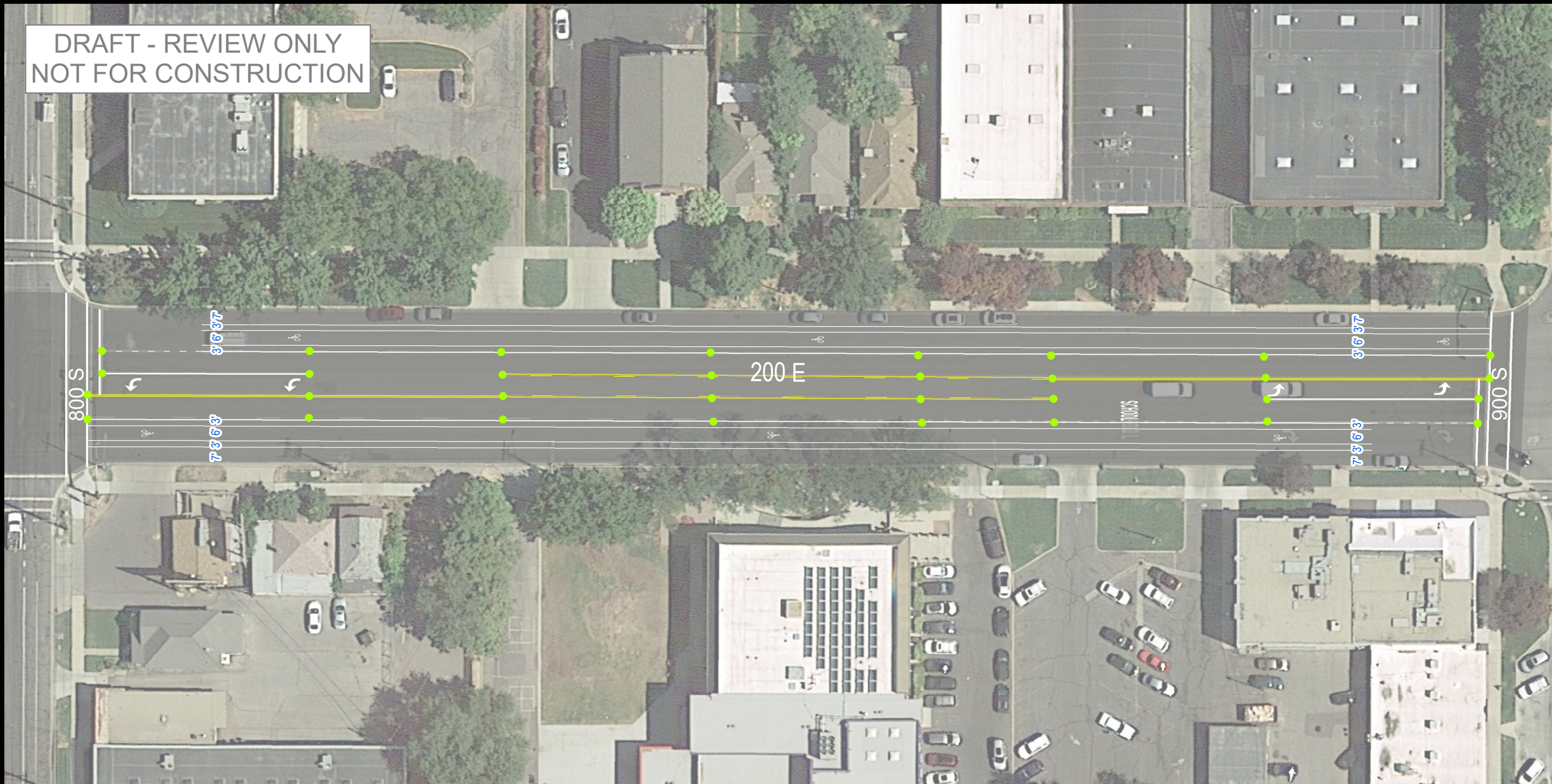
Striping Plan

SHEET IDENTIFIER:

Sheet 3/4

BINDING
ORDER

DRAFT - REVIEW ONLY
NOT FOR CONSTRUCTION



General Sheet Notes

Please call **Scott Vaterlaus**
at 801-535-6630 to verify striping
layout prior to painting.

**NOTICE REQUIRED AT LEAST
2 DAYS PRIOR TO INSTALLATION.**

Sign and bicycle symbol locations
will be reviewed by Salt Lake City
Transportation Division staff after striping
is complete. Please schedule at least
2 business days prior to installation.

Layout Notes

All dimensions from EDGE of ASPHALT.

Tab points shown with green dot.

General striping layout approach: find centerline (and tab),
measure off centerline,
extra width to remain in parking



0 12.5 25 50 Feet

PREPARED BY:



**SALT LAKE CITY
CORPORATION**

COMMUNITY AND
NEIGHBORHOODS

DIVISION of TRANSPORTATION

349 SOUTH 200 EAST, SUITE 150 SALT
LAKE CITY, UTAH 84111-5502
TELEPHONE: 801-535-6630
FAX: 801-535-6019
E-MAIL: WWW.SLCGOV.COM

PROFESSIONAL SEAL:

PROJECT IDENTIFICATION:

200 East
Resurfacing
Project
ver. D

Date: 6/2/2021

PROJECT OWNER:

**SALT LAKE CITY
CORPORATION**

451 SOUTH STATE STREET
SALT LAKE CITY, UTAH 84111-2836
WWW.SLCGOV.COM

REV	DATE	DESCRIPTION

ENG. JOB #:

P.U. JOB #: N/A

FAS NO.:

PREPARED BY: SLC CORP.

DRAWING FILE NAME:

DRAWN BY:

CHECKED BY:

SHEET TITLE:

Striping Plan

SHEET IDENTIFIER:

Sheet 4/4

BINDING
ORDER