

GENERAL NOTES:


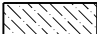

1. RETURN ALL REMOVED SIGNS TO SLC STREETS DIVISION.
2. PRESERVE AND PROTECT IMPROVEMENTS BEYOND LIMITS OF DISTURBANCE.
3. PRESERVE AND PROTECT EXISTING UTILITY LINES AND STRUCTURES.

- 1 LIMITS OF DISTURBANCE.

SCOPE OF WORK:

- 1 REMOVE GRAVEL PAVEMENT
- 2 REMOVE LANDSCAPE AREA
- 3 PROTECT WATER MAINLINE
- 4 REMOVE AND RELOCATE EXISTING GATE, COORDINATE WITH OWNER'S REPRESENTATIVE
- 5 REMOVE EXISTING CONCRETE BARRIERS AND PROVIDE TO OWNER
- 6 PROTECT EXISTING FENCE
- 7 SALVAGE EXISTING ON-SITE BOULDERS, RELOCATE PER SITE PLAN

LEGEND:

-  EXISTING LANDSCAPE DEMO
-  EXISTING GRAVEL DEMO
-  REMOVE EXISTING CONCRETE BARRIERS AND PROVIDE TO OWNER



PREPARED BY:
SALT LAKE CITY CORPORATION
 DEPARTMENT OF COMMUNITY AND NEIGHBORHOODS
ENGINEERING DIVISION
 349 SOUTH 200 EAST, SUITE 100 EAST
 LAKE CITY, UTAH 84114-2506
 TELEPHONE: 801-438-7891
 FAX: 801-438-6093
 WWW.SLC.GOV/CDM
 PREPARED CONSULTANTS:



PROFESSIONAL SEAL:

PROJECT IDENTIFICATION:
FOOTHILLS TRAILHEAD IMPROVEMENTS

100% SUBMITTAL

SALT LAKE CITY, UTAH

PROJECT OWNER:
SALT LAKE CITY CORPORATION
 451 SOUTH STATE STREET
 SALT LAKE CITY, UTAH 84111-2836
 WWW.SLC.GOV/CDM

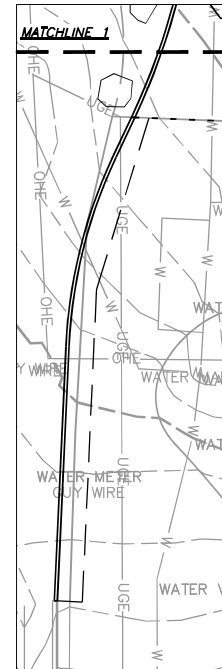
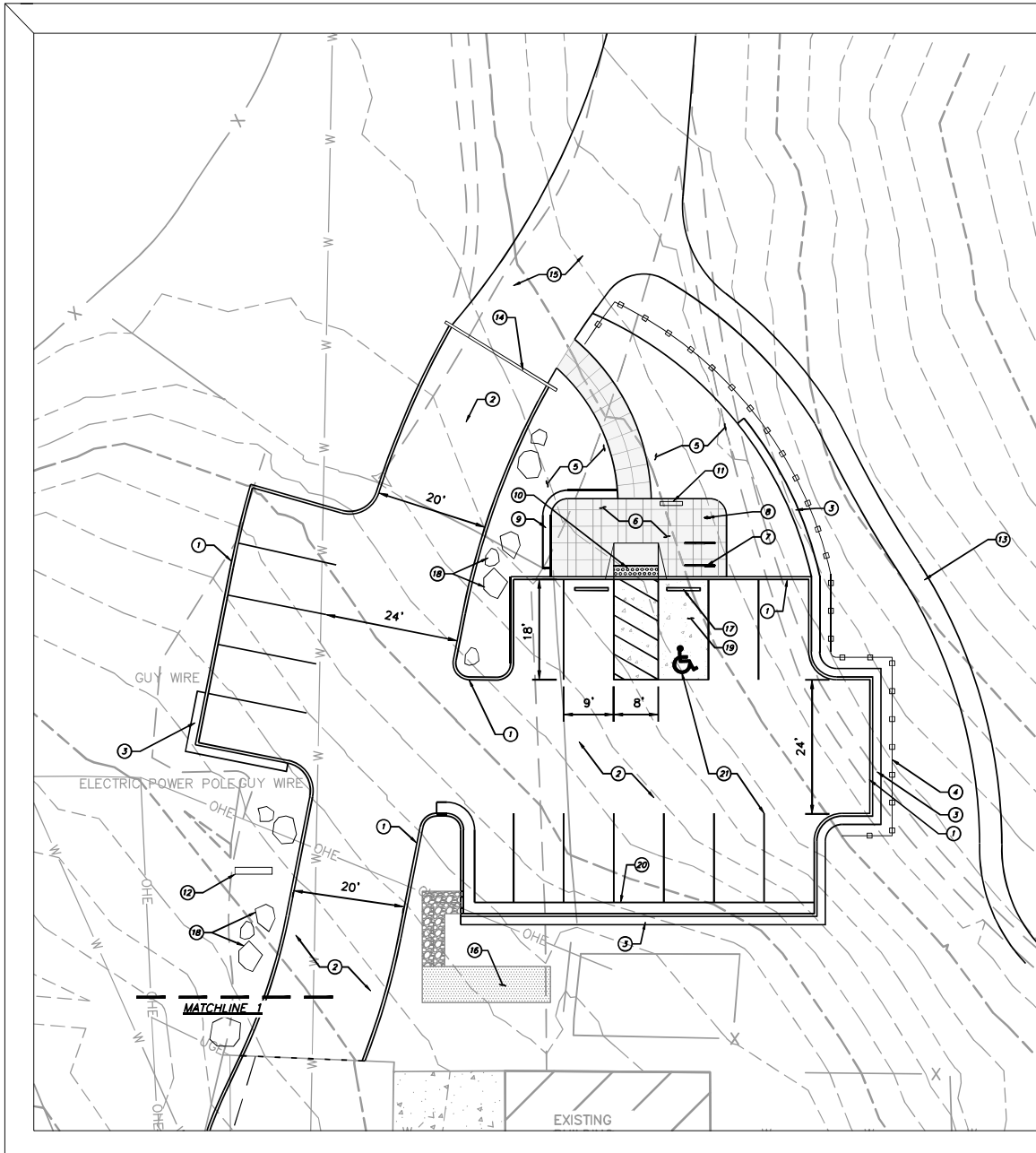
DATE SUBMITTED:
 MAY 5, 2023

MARK	DATE	DESCRIPTION

PREPARED BY: SLC CORP
 CONTRACT #:
 PROJECT #: PRJ-20027
 JOB #:
 DRAWING FILE:
 DRAWN BY: MMALFIN
 CHECKED BY: DROSTER
 COPYRIGHT:

SHEET TITLE:
18TH AVENUE DEMO PLAN

SHEET IDENTIFIER:
DM501



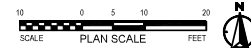
GENERAL NOTES:

1. ALL WORK TO COMPLY WITH APWA AND SALT LAKE CITY STANDARDS AND SPECIFICATIONS.
2. ALL IMPROVEMENTS MUST COMPLY WITH ADA STANDARDS.
3. SEE GRADING PLANS FOR ADDITIONAL DESIGN INFORMATION.

SCOPE OF WORK:

PROVIDE, INSTALL AND/OR CONSTRUCT THE FOLLOWING PER THE SPECIFICATIONS GIVEN OR REFERENCED, THE DETAILS NOTED, AND/OR AS SHOWN ON THE CONSTRUCTION DRAWINGS:

- ① CURB, TYPE P (DETAIL 4, SHEET D101)
- ② ASPHALT PAVEMENT, 3" THICK WITH 8" AGGREGATE BASE (DETAIL 1, SHEET D102)
- ③ RETAINING WALL, SEE CIVIL SHEETS
- ④ FENCING, TIMBER AND ROPE, 42" HEIGHT (DETAIL 3, SHEET D103)
- ⑤ LANDSCAPE AREA, SEE SHEET L501 FOR PLANT SCHEDULE AND IRRIGATION INFORMATION
- ⑥ COLORED PORTLAND CEMENT CONCRETE PAVEMENT (PCCP), 4" THICK WITH 4" BASE (DETAIL 1, SHEET D101)
- ⑦ BIKE RACK; DERO 'BIKE' BIKE RACK OR APPROVED EQUAL (DETAIL 1, SHEET D103)
- ⑧ BIKE REPAIR STATION; DERO 'FIXIT' OR APPROVED EQUAL (DETAIL 2, SHEET D103)
- ⑨ SEAT WALL, CONCRETE, 18" TALL (DETAIL 4, SHEET D102)
- ⑩ ADA ACCESS RAMP WITH DETECTABLE WARNING SURFACE, TRUNCATED DOME PAVERS (DETAIL 4, SHEET D101)
- ⑪ TRAILHEAD INFORMATION KIOSK (DETAIL 7, SHEET D103)
- ⑫ VEHICULAR ENTRANCE SIGN (DETAIL 6, SHEET D103)
- ⑬ REGRADE EXISTING SOFT SURFACE TRAIL, CONNECT TO EXISTING - BY OTHERS
- ⑭ RELOCATED GATE, COORDINATE WITH OWNER'S REPRESENTATIVE PRIOR TO CONSTRUCTION.
- ⑮ EXISTING GRAVEL PAVE FOR MAINTENANCE VEHICLE ACCESS
- ⑯ STORMWATER TREATMENT AREA
- ⑰ PRECAST CAR STOP (DETAIL 2, SHEET D102)
- ⑱ RELOCATED BOULDERS TO DISCOURAGE PEOPLE FROM PARKING
- ⑲ CONCRETE PAVING AT ADA LOADING ZONES AND PARKING SPACES
- ⑳ CURB, TYPE A (DETAIL 5, SHEET D101)
- ㉑ NEW STRIPING, TYP.



PREPARED BY:
SALT LAKE CITY CORPORATION
 DEPARTMENT OF COMMUNITY AND NEIGHBORHOODS
 ENGINEERING DIVISION
 349 SOUTH 200 EAST, SUITE 100 EAST
 SALT LAKE CITY, UTAH 84111-2506
 TELEPHONE: 801-458-1501
 FAX: 801-458-6093
 WWW.SLC.GOV/CDM
 PREPARER CONSULTANTS:



PROFESSIONAL SEAL:

PROJECT IDENTIFICATION:

FOOTHILLS TRAILHEAD IMPROVEMENTS

100% SUBMITTAL

SALT LAKE CITY, UTAH

PROJECT OWNER:

SALT LAKE CITY CORPORATION

451 SOUTH STATE STREET
 SALT LAKE CITY, UTAH 84111-2835
 WWW.SLC.GOV/CDM

DATE SUBMITTED:
 MAY 9, 2022

NO.	REVISION	DATE	DESCRIPTION

NO.	DATE	DESCRIPTION

PREPARED BY: SLC CORP
 CONTRACT #:
 PROJECT #: PRR-20027
 JOB #:
 DRAWING FILE:
 DRAWN BY: MMALFIN
 CHECKED BY: DFOSTER
 COPYRIGHT:

SHEET TITLE:
18TH AVENUE SITE PLAN
 SHEET IDENTIFIER:
CP501

