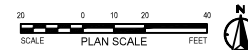
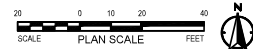
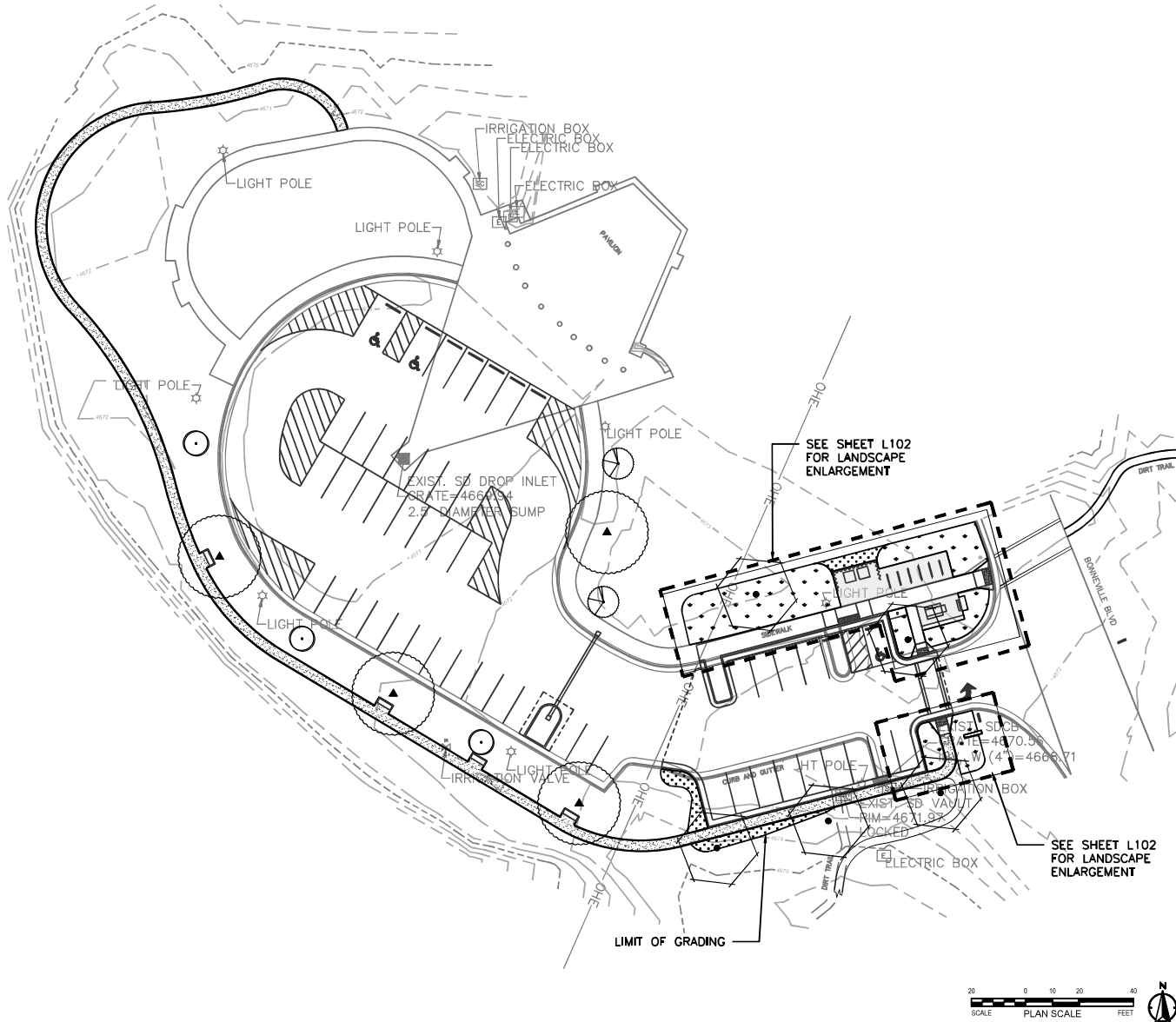

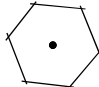



**DM101**



SHEET IDENTIFIER:
CP101



LANDSCAPE LEGEND

BOTANICAL NAME:	COMMON NAME:	SIZE:	QTY:
TREES			
 ACER GRANDIDENTATUM	BIGTOOTH MAPLE	2" CAL.	2
 CELTIS OCCIDENTAUS	HACKBERRY	2" CAL.	5
 AMELANCHIER UTAHENSIS	UTAH SERVICEBERRY	2" CAL.	4
 ULMUS AMERICANA 'VALLEY FORGE'	VALLEY FORGE ELM	2" CAL.	4
 QUERCUS GAMBELII	GAMBEL OAK	2" CAL.	3

DECORATIVE LANDSCAPE AREA

 SEE DETAILED ENLARGEMENT ON SHEET L102

GREAT BASIN SEED: RANGE AND FOOTHILLS SEED MIX



PERCENT IN MIX	SPECIES	SCIENTIFIC NAME
41%	SANDBERG BLUEGRASS	POA SECUNDA SANDBERGII
31%	SLENDER WHEATGRASS	ELYMUS TRACHYCAULUS
9%	BOTTLEBRUSH SQUIRRELTAIL	ELYMUS ELYMOIDES
7%	BASIN WILDRYE	LEYMUS CINERUS
6%	CRESTED WHEATGRASS	AGROPYRON CRISTATUM
3%	BLUE FLAX	LINUM PERENNE
3%	WESTERN YARROW	WHITE YARROW

NOTES:

- SEED MIX PROVIDED BY GREAT BASIN SEED. DEFER TO ANY SPECIAL RECOMMENDATIONS PER SUPPLIER
- SEEDS SHALL BE HYDROSEEDDED AT A RATE OF 12 POUNDS PER ACRE.
- ALL AREAS DISTURBED BY CONSTRUCTION SHALL BE RE-SEEDDED

PREPARED BY:
SALT LAKE CITY CORPORATION
 DEPARTMENT OF COMMUNITY AND NEIGHBORHOODS
 ENGINEERING DIVISION
 319 SOUTH 200 EAST, SUITE 100 EAST
 SALT LAKE CITY, UTAH 84111-2535
 TELEPHONE: 801-451-1551
 FAX: 801-451-6093
 WWW.SLC.GOV.UTAH

PREPARED BY:
alta



PROFESSIONAL SEAL:

PROJECT IDENTIFICATION:

FOOTHILLS TRAILHEAD IMPROVEMENTS

100% SUBMITTAL

SALT LAKE CITY, UTAH

PROJECT OWNER:

SALT LAKE CITY CORPORATION

451 SOUTH STATE STREET
 SALT LAKE CITY, UTAH 84111-2535
 WWW.SLC.GOV.UTAH

DATE SUBMITTED:

MAY 5, 2022

DATE	DESCRIPTION

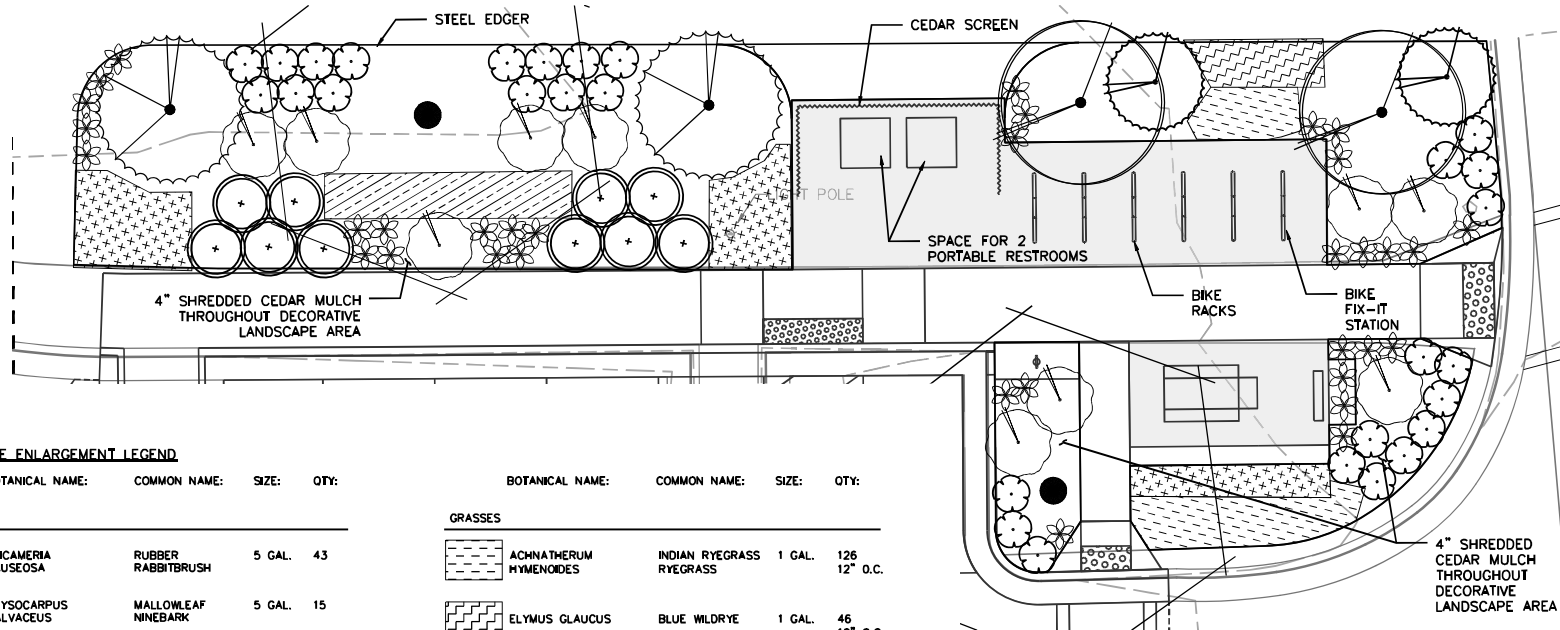
DATE DESCRIPTION

PREPARED BY: SLC CORP
 CONTRACT #: PRB-20027
 JOB #:
 DRAWING FILE:
 DRAWN BY: MMALLEN
 CHECKED BY: DROSTER
 COPYRIGHT:

SHEET TITLE:
BONNEVILLE BOULEVARD LANDSCAPE PLAN

SHEET IDENTIFIER:

L101



LANDSCAPE ENLARGEMENT LEGEND

BOTANICAL NAME: COMMON NAME: SIZE: QTY:

SHRUBS

	ERICAMERIA NAUSEOSA	RUBBER RABBITBRUSH	5 GAL.	43
	PHYSOCARPUS MALVACEUS	MALLOWLEAF NINEBARK	5 GAL.	15
	SHEPHERDIA ARGENTEA	SILVER BUFFALOBERY	5 GAL.	2

PERENNIALS

	BALSAMORHIZA SAGITTATA	ARROWLEAF BALSAMROOT	1 GAL.	50
	ARTEMISIA LUDOVICIANA	WHITE SAGEBRUSH	1 GAL.	5
	LUPINUS ARGENTEUS	SILVER LUPINE	1 GAL.	9

BOTANICAL NAME: COMMON NAME: SIZE: QTY:

GRASSES

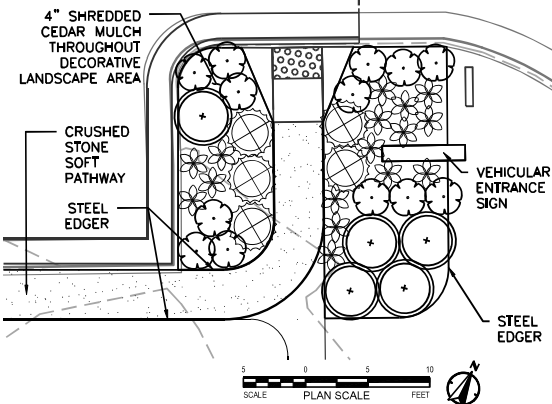
	ACHNATHERUM HYMENOIDES	INDIAN RYEGRASS RYEGRASS	1 GAL.	126 12" O.C.
	ELYMUS GLAUCUS	BLUE WILDRYE	1 GAL.	46 12" O.C.
	LEYMUS CINEREUS	GREAT BASIN WILDRYE	1 GAL.	83 18" O.C.
	PSEUDOROEGNERIA SPICATA	BLUEBUNCH WHEATGRASS	1 GAL.	21 24" O.C.

BOTANICAL NAME: COMMON NAME: QTY:

TREES

	ACER GRANDIDENTATUM	BIGTOOTH MAPLE	SEE L101
	AMELANCHIER UTAHENSIS	UTAH SERVICEBERRY	SEE L101

SCALE PLAN SCALE FEET



PREPARED BY:
SALT LAKE CITY CORPORATION
DEPARTMENT OF COMMUNITY AND NEIGHBORHOODS
ENGINEERING DIVISION
349 SOUTH 200 EAST, SUITE 100 EAST
SALT LAKE CITY, UTAH 84111-0006
TELEPHONE: 801-455-1500
FAX: 801-455-6093
WWW.SLC.GOV/CDD
PREPARED CONSULTANTS:

alta



PROFESSIONAL SEAL:

PROJECT IDENTIFICATION:

FOOTHILLS TRAILHEAD IMPROVEMENTS

100% SUBMITTAL

SALT LAKE CITY, UTAH

PROJECT OWNER:

SALT LAKE CITY CORPORATION

451 SOUTH STATE STREET
SALT LAKE CITY, UTAH 84111-0836
WWW.SLC.GOV/CDD

DATE SUBMITTED:

MAY 5, 2022

DATE	DESCRIPTION

DATE DESCRIPTION

PREPARED BY: SLC CORP

CONTRACT #:

PROJECT #:

JOB #:

DRAWING FILE:

DRAWN BY: MAMALIN

CHECKED BY: DROSTER

COPYRIGHT:

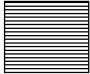
SHEET TITLE:

BONNEVILLE BOULEVARD LANDSCAPE ENLARGEMENT

SHEET IDENTIFIER:

L102

IRRIGATION SCHEDULE

SYMBOL	MANUFACTURER/MODEL/DESCRIPTION	QTY	DETAIL
○	Rain Bird RWS-B-C-P 1401 Root Watering System with 4in, diameter x 36,0in. long with locking grate, semi-rigid mesh tube, Check Valve and Purple Grate, Rain Bird bubbler option as indicated: 1401 0.25 GPM, 1402 0.5 GPM, 1404 1.0 GPM, 1408 2.0 GPM,	18	4/D105
	Rain Bird RWS-A-B-C-P 1401 Mini Root Watering System with 4in, diameter x 18in. long with locking grate, semi-rigid mesh tube, and Rain Bird 1401 0.25 GPM or 1402 0.5 GPM bubbler as indicated, With Check Valve and Purple Grate,	18	4/D105
SYMBOL	MANUFACTURER/MODEL/DESCRIPTION	QTY	DETAIL
■	Rain Bird X CZ-100-PRB-COM 1" Wide Flow Drip Control Kit for Commercial Applications, 1in, Ball Valve with 1in, PESB Valve and 1in, Pressure Regulating 40psi Quick-Check Basket Filter, 0.3 GPM@20 GPM	5	1/D105
⦿	Flush Valve	4	2/D105
⦿	Drip Air Relief Valve	4	2/D105
	Area to Receive Dripline Netafim TLCV-09-12 Techline Pressure Compensating Landscape Dripline with Check Valve, 0.9 GPH emitters at 12" O.C., Dripline laterals spaced at 12" apart, with emitters offset for triangular pattern, 17mm,	2,745 Lf.	2/D105
SYMBOL	MANUFACTURER/MODEL/DESCRIPTION	QTY	DETAIL
■	Rain Bird 44-LRC 1" 1in, Brass Quick-Coupling Valve, with Corrosion-Resistant Stainless Steel Spring, Thermoplastic Rubber Cover, and 24-Piece Body,	4	3/D105
⦿	Gate Valve Existing gate valve,	1	
⦿	Existing Rain Bird PEBMV 2" Existing 1in., 1-1/2in., 2in, Plastic Industrial Master Valve, Low Flow Operating Capability, Globe Configuration,	1	
⦿	Existing Backflow Preventer 2" Reduced Pressure Backflow Preventer,	1	
⦿	Existing Controller Existing Controller with additional stations,	1	
⦿	Rain Bird FG-100 1in, Flow Sensor, Plastic Model, Suggested Operating Range 3.0 GPM to 25.0 GPM, Size for Flow Not According to Pipe Size, Rain Bird Compatible Controllers: ESP-ME3, or Controllers Accepting Custom K-Factor and Offset, Install in Rain Bird Valve Box,	1	
⦿	Existing Stop and Waste Valve Existing 2" Valve at irrigation Main	1	
⦿	VBSTD Valve Box VBSTD Professional Standard Valve Box 12" H Black with Drop-in Locking Green Lid	4	
⦿	Water Meter 2" Existing Water Meter with 3" service line	1	
— — — — —	Irrigation Lateral Line: PVC Schedule 40-ANP 1/2"	646,3 Lf.	
— — — — —	Irrigation Lateral Line: PVC Schedule 40-ANP 3/4"	44,7 Lf.	
— — — — —	Irrigation Lateral Line: PVC Schedule 40-ANP 1"	14,4 Lf.	
— — — — —	Irrigation Lateral Line: PVC Schedule 40-ANP 1 1/2"	7,1 Lf.	
— — — — —	Irrigation Mainline: PVC Schedule 40-NP 1/2"	189,6 Lf.	
— — — — —	Irrigation Mainline: PVC Schedule 40-NP 1 1/4"	192,7 Lf.	
— — — — —	Pipe Sleeve: PVC Class 200 SDR 21	91,2 Lf.	5/D105

VALVE SCHEDULE

NUMBER	MODEL	SIZE	TYPE	GPM	PSI	PSI @ POC	PRECIP
1	Rain Bird X CZ-100-PRB-COM	1"	Area for Dripline	6,62	27,7	44,4	1,96 in/h
2	Rain Bird X CZ-100-PRB-COM	1"	Area for Dripline	17,64	36,1	57,9	1,65 in/h
3	Rain Bird X CZ-100-PRB-COM	1"	RWS Bubbler	4,5	37,8	54,6	0,94 in/h
4	Rain Bird X CZ-100-PRB-COM	1"	Area for Dripline	16,92	36,8	58,9	1,96 in/h
5	Rain Bird X CZ-100-PRB-COM	1"	RWS Bubbler	4,5	35,6	68,4	0,91 in/h

IRRIGATION NOTES

- THE CONTRACTOR SHALL REVIEW RELATED DRAWINGS AND SHALL ENSURE COORDINATION WITH ALL APPLICABLE TRADES PRIOR TO SUBMITTING BID.
- THE IRRIGATION SYSTEM SHALL BE INSTALLED IN CONFORMANCE WITH ALL APPLICABLE STATE AND LOCAL CODES AND ORDINANCES BY LICENSED CONTRACTORS AND EXPERIENCED WORKERS. CONTRACTOR SHALL OBTAIN AND PAY FOR ALL REQUIRED PERMITS AND FEES RELATING TO THE WORK.
- THIS DESIGN IS DIAGRAMMATIC. ALL PIPING, VALVES, ETC. SHOWN WITHIN PAVED AREAS IS FOR DESIGN CLARIFICATION ONLY AND SHALL BE INSTALLED IN PLANTING AREAS A MINIMUM OF 18" FROM ADJACENT HARDSCAPE. AVOID ANY CONFLICTS BETWEEN THE IRRIGATION SYSTEM, PLANTING AND ARCHITECTURAL FEATURES. PARALLEL PIPES MAY BE INSTALLED IN COMMON TRENCH, PIPES ARE NOT TO BE INSTALLED DIRECTLY ABOVE ONE ANOTHER.
- DO NOT WILLFULLY INSTALL THE IRRIGATION SYSTEM AS SHOWN ON THE DRAWINGS WHEN IT IS OBVIOUS IN THE FIELD THAT OBSTRUCTIONS, GRADE DIFFERENCES OR DIFFERENCES IN THE AREA DIMENSIONS EXIST THAT MIGHT NOT HAVE BEEN CONSIDERED IN THE ENGINEERING. SUCH OBSTRUCTIONS OR DIFFERENCES SHOULD BE BROUGHT TO THE ATTENTION OF THE CITY'S AUTHORIZED REPRESENTATIVE. IN THE EVENT THAT THIS NOTIFICATION IS NOT PERFORMED, THE IRRIGATION CONTRACTOR SHALL ASSUME FULL RESPONSIBILITY FOR ANY REVISIONS NECESSARY.
- IT IS THE RESPONSIBILITY OF THE IRRIGATION CONTRACTOR TO BE FAMILIAR WITH ALL GRADE DIFFERENCES, LOCATION OF WALLS, RETAINING WALLS, ETC. THEY SHALL COORDINATE THEIR WORK WITH THE GENERAL CONTRACTOR AND OTHER SUBCONTRACTORS FOR THE LOCATION AND THE INSTALLATION OF PIPE SLEEVES THROUGH WALLS, UNDER ROADWAYS, PAVING, STRUCTURES, ETC. CONTRACTOR TO VERIFY THE LOCATION OF EXISTING UNDERGROUND UTILITIES AND STRUCTURES PRIOR TO THE EXCAVATION OF TRENCHES. CONTRACTOR IS TO REPAIR ANY DAMAGE CAUSED BY THE WORK AT NO ADDITIONAL COST TO THE OWNER.
- DUE TO THE SCALE OF THE DRAWINGS, IT IS NOT POSSIBLE TO INDICATE ALL OFFSETS, FITTINGS, SLEEVES, ETC., WHICH MAY BE REQUIRED. THE CONTRACTOR SHALL CAREFULLY INVESTIGATE THE STRUCTURAL AND FINISHED CONDITIONS AFFECTING ALL OF THE WORK AND PLAN THE WORK ACCORDINGLY, FURNISHING SUCH FITTINGS, ETC., AS MAY BE REQUIRED TO MEET SUCH CONDITIONS. DRAWINGS ARE GENERALLY DIAGRAMMATIC AND INDICATIVE OF THE WORK TO BE INSTALLED. THE WORK SHALL BE INSTALLED IN SUCH A MANNER AS TO AVOID CONFLICTS BETWEEN IRRIGATION SYSTEMS, PLANTING, AND ARCHITECTURAL FEATURES.
- IRRIGATION CONTROL WIRE SHALL BE #12, U.L. APPROVED FOR DIRECT BURIAL. COMMON WIRE SHALL BE #12 U.L. APPROVED AND SHALL BE WHITE IN COLOR. WIRING TO INDIVIDUAL REMOTE CONTROL VALVES SHALL BE COLOR OTHER THAN WHITE.
- EACH CONTROLLER SHALL HAVE ITS OWN INDEPENDENT GROUND WIRE.
- REMOTE CONTROL VALVES SHALL BE WIRED TO CONTROLLER IN SEQUENCE AS SHOWN ON PLANS. RUN WIRE FROM EACH RCV TO THE CONTROLLER. SPLICING WIRES TOGETHER OUTSIDE OF VALVE BOXES WILL NOT BE PERMITTED.
- SPLICING OF 24-VOLT WIRES WILL NOT BE PERMITTED EXCEPT IN VALVE BOXES. LEAVE A 30" COL. OF EXCESS WIRE AT EACH SPLICE AND 100 FEET ON CENTER ALONG WIRE RUN. TAPE WIRE IN BUNDLES 10 FEET ON CENTER. NO TAPING PERMITTED INSIDE SLEEVES.
- INSTALL ONE (1) SPARE CONTROL WIRE FOR EVERY 6 (SIX) STATIONS ON THE CONTROLLER ALONG THE ENTIRE MAIN LINE. SPARE WIRES SHALL BE THE SAME COLOR (ONE WITH A WHITE STRIPE) AND OF A DIFFERENT COLOR THAN OTHER CONTROL WIRES. LOOP 30" EXCESS WIRE INTO EACH SINGLE VALVE BOX AND INTO ONE VALVE BOX IN EACH GROUP OF VALVES.
- INSTALL VALVE BOXES MINIMUM 12" FROM AND PERPENDICULAR TO WALK, CURB, OR LANDSCAPE FEATURE. AT MULTIPLE VALVE BOX GROUPS, EACH BOX SHALL BE AN EQUAL DISTANCE FROM THE WALK, CURB, ETC. AND EACH BOX SHALL BE MINIMUM 12" APART. SHORT SIDE OF VALVE BOXES SHALL BE PARALLEL TO WALK, CURB, ETC.
- REMOTE CONTROL VALVES AND ISOLATION VALVE LOCATIONS ON THIS DRAWING ARE APPROXIMATE. THE CONTRACTOR SHALL STAKE OUT EACH REMOTE CONTROL VALVE AND ISOLATION VALVE LOCATION FOR REVIEW AND APPROVAL BY THE CITY INSPECTOR PRIOR TO INSTALLATION OF ALL VALVES. FINAL LOCATION AND EXACT POSITIONING FOR REMOTE CONTROL VALVES AND ISOLATION VALVES SHALL BE DETERMINED BY THE CITY INSPECTOR. MINOR MODIFICATIONS OF VALVE LOCATIONS AS REQUESTED BY THE COUNTY INSPECTOR SHALL BE PROVIDED BY THE CONTRACTOR AT NO ADDITIONAL COST TO THE CITY.
- LOCATE QUICK COUPLING VALVE 12" FROM HARDSCAPE AREA.
- ALL MAIN LINES SHALL BE FLUSHED PRIOR TO THE INSTALLATION OF IRRIGATION HEADS, AT 30 DAYS AFTER INSTALLATION EACH SYSTEM SHALL BE FLUSHED TO ELIMINATE GLUE AND DIRT PARTICLES FROM THE LINES.
- NOTIFY CITY INSPECTOR OF ANY ASPECTS OF LAYOUT THAT WILL PROVIDE INCOMPLETE OR INSUFFICIENT WATER COVERAGE OF PLANT MATERIAL AND DO NOT PROCEED UNTIL INSTRUCTIONS ARE OBTAINED. REPAIR ALL EXISTING MATERIALS DAMAGED DURING CONSTRUCTION.
- IN ADDITION TO THE SLEEVES AND CONDUITS SHOWN ON THE DRAWINGS, THE IRRIGATION CONTRACTOR SHALL BE RESPONSIBLE FOR COORDINATING THE INSTALLATION OF SLEEVES AND CONDUITS OF SUFFICIENT SIZE UNDER ALL PAVED AREAS.
- SLEEVES SHALL BE MINIMUM 2X DIAMETER OF PIPE SLEEVES. ALL CONTROL WIRE SHALL BE INSTALLED IN A SEPARATE 2-INCH CONDUIT UNDER PAVING. SLEEVING SHALL EXTEND MINIMUM 12" BEYOND PAVING.
- ALL EXCAVATIONS ARE TO BE FILLED WITH COMPACTED BACKFILL. CONTRACTOR TO REPAIR ALL SETTLED TRENCHES PROMPTLY. FOR A PERIOD OF 1 YEAR AFTER COMPLETION OF WORK, ADDITIONALLY, CONTRACTOR SHALL WARRANT THAT THE IRRIGATION SYSTEM WILL BE FREE FROM DEFECTS IN MATERIALS AND WORKMANSHIP FOR A PERIOD OF 1 YEAR AFTER FINAL ACCEPTANCE OF WORK.
- THE IRRIGATION SYSTEM DESIGN IS BASED ON THE MINIMUM OPERATING PRESSURE SHOWN ON THE IRRIGATION DRAWINGS. THE IRRIGATION CONTRACTOR SHALL VERIFY WATER PRESSURE PRIOR TO CONSTRUCTION. REPORT ANY DIFFERENCE BETWEEN THE WATER PRESSURE INDICATED ON THE DRAWINGS AND THE ACTUAL PRESSURE READING AT THE IRRIGATION POINT OF CONNECTION TO THE CITY'S AUTHORIZED REPRESENTATIVE.
- OPERATE IRRIGATION CONTROLLER(S) BETWEEN THE HOURS OF 10:00 PM AND 7:00 AM.
- IRRIGATION CONTRACTOR SHALL PROVIDE AND PAY FOR INSPECTION AND TESTING OF BACKFLOW PREVENTION DEVICE. INSPECTION SHALL BE PERFORMED BY AN INSPECTOR CERTIFIED BY SALT LAKE COUNTY.
- THE CONTRACTOR SHALL NOTIFY UNDERGROUND SERVICE ALERT AT 811 AT LEAST 48 HOURS PRIOR TO ANY EXCAVATION.
- CONTRACTOR TO RE-USE EXISTING VALVE AND LATERALS ALONG SOUTH SIDE. CONTRACTOR TO CHECK SYSTEM TO VERIFY THERE ARE NO BREAKS OR LEAKS. IF THE SYSTEM IS NOT REPAIRABLE CONTRACTOR WILL CONTACT LANDSCAPE ARCHITECT.
- EXISTING CONNECTION TO WATER METER, BACKFLOW PREVENTER, ETC TO BE KEPT IN PLACE AND USED. EXISTING IRRIGATION (BEFORE REFURBISHMENT) AS-BUILTS AVAILABLE UPON REQUEST.

PREPARED BY:
SALT LAKE CITY CORPORATION
DEPARTMENT OF COMMUNITY AND NEIGHBORHOODS
ENGINEERING DIVISION
349 SOUTH 700 EAST, SUITE 100 SAT
LAKE CITY, UTAH 84114-0006
TELEPHONE: 801-535-7591
FAX: 801-535-6993
WWW.SLCGOV.COM
PREPARED BY: CONSULTANTS:



PROFESSIONAL SEAL:

PROJECT IDENTIFICATION:
FOOTHILLS TRAILHEAD IMPROVEMENTS

100% SUBMITTAL

SALT LAKE CITY, UTAH

PROJECT OWNER:
SALT LAKE CITY CORPORATION

451 SOUTH STATE STREET
SALT LAKE CITY, UTAH 84111-2836
WWW.SLCGOV.COM

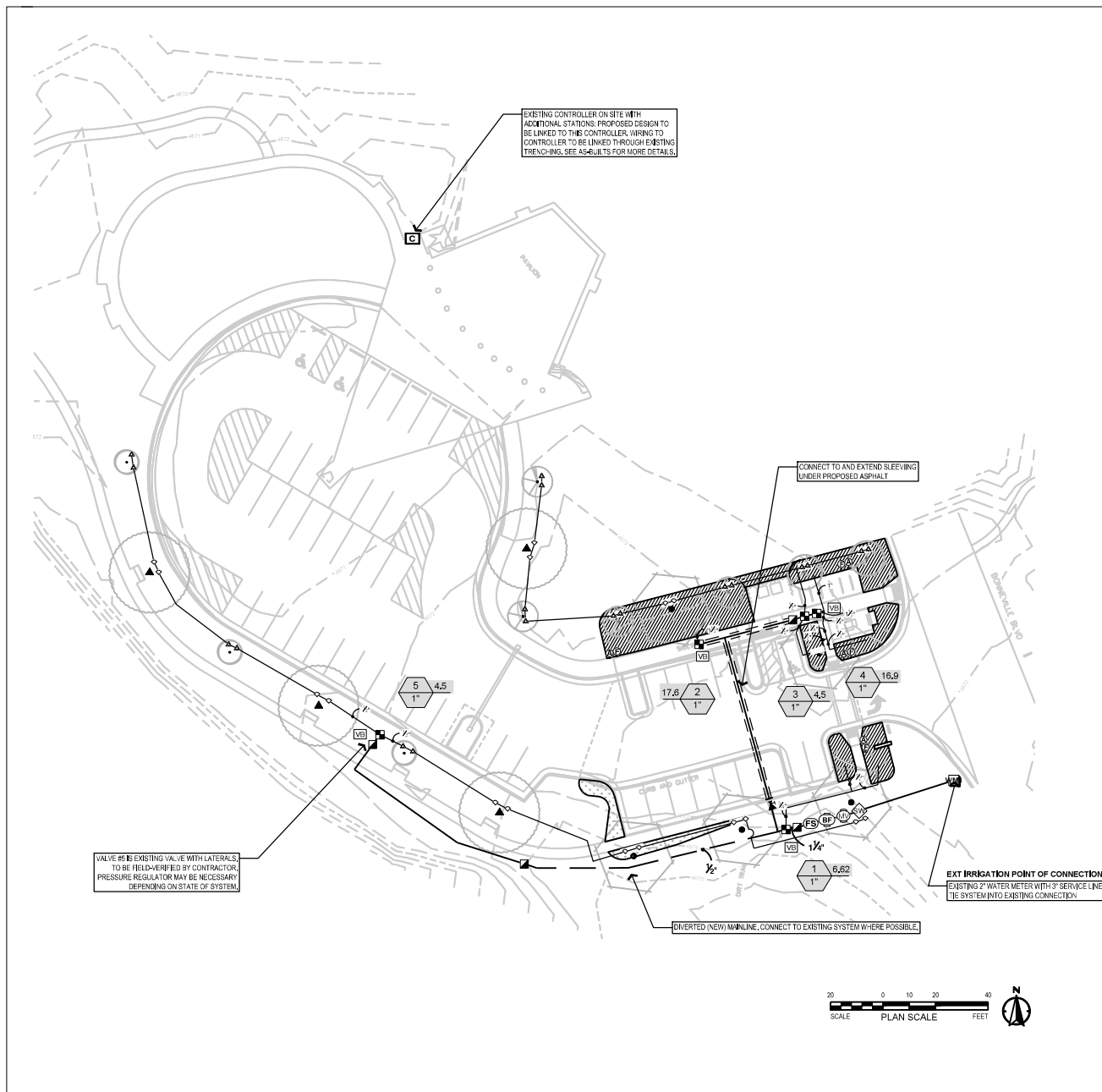
DATE SUBMITTED:
MAY 5, 2023

MARK	DATE	DESCRIPTION

PREPARED BY: SLC CORP
CONTRACT #:
PROJECT #: PRK20027
JOB #:
DRAWING FILE:
DRAWN BY: MHALPIN
CHECKED BY: DFOSTER
COPYRIGHT:

SHEET TITLE:
BONNEVILLE BOULEVARD IRRIGATION LEGEND

SHEET IDENTIFIER:
I100



IRRIGATION SCHEDULE

SYMBOL	MANUFACTURER/MODEL/DESCRIPTION	QTY	DETAIL
○	Rain Bird RVWS-B-C-P 1401 Root Watering System with 4.0in. diameter x 36.0in. long with locking grate, semi-rigid mesh tube, Check Valve and Purple Grate, Rain Bird bubbler option as indicated: 1401 0.25 GPM, 1402 0.5 GPM, 1404 1.0 GPM, 1408 2.0 GPM,	18	4/D105
▲	Rain Bird RVWS-M-B-C-P 1401 Mini Root Watering System with 4in. diameter x 18in. long with locking grate, semi-rigid mesh tube and Rain Bird 1401 0.25 GPM or 1402 0.5 GPM bubbler as indicated, With Check Valve and Purple Grate,	18	4/D105
SYMBOL	MANUFACTURER/MODEL/DESCRIPTION	QTY	DETAIL
■	Rain Bird XCZ-100-PRB-COM 1" Wide Flow Drip Control Kit for Commercial Applications, 1in. Ball Valve with 1in. PESS Valve and 1in. Pressure Regulating 40psi Quick-Check Basket Filter, 0.3 GPM-20 GPM	5	1/D105
⊕	Flush Valve	4	2/D105
⊕	Drip Air Relief Valve	4	2/D105
▨	Area to Receive Dripline Netafim TLCV-09-12 Teeline Pressure Compensating Landscape Dripline with Check Valve, 0.9 GPH emitters at 12" O.C. Dripline laterals spaced at 12" apart, with emitters offset for triangular pattern, 17mm,	2,745 L.F.	2/D105
SYMBOL	MANUFACTURER/MODEL/DESCRIPTION	QTY	DETAIL
■	Rain Bird 44-LRC 1" 1in. Brass Quick-Coupling Valve, with Corrosion-Resistant Stainless Steel Spring Thermoplastic Rubber Cover, and 2-Piece Body,	4	3/D105
⋈	Gate Valve Existing gate valve,	1	
⊕	Existing Rain Bird PEBMV 2" Existing 1in., 1-1/2in., 2in. Plastic Industrial Master Valve, Low Flow Operating Capability, Globe Configuration,	1	
⊕	Existing Backflow Preventer 2" Reduced Pressure Backflow Preventer,	1	
⊕	Existing Controller Existing Controller with additional stations,	1	
⊕	Rain Bird FG-100 1in. Flow Sensor, Plastic Model, Suggested Operating Range 3.0 GPM to 25.0 GPM, Size for Flow Not According to Pipe Size, Rain Bird Compatible Controllers: ESP-AME3, or Controllers Accepting Custom K-Factor and Offset. Install in Rain Bird Valve Box,	1	
⊕	Existing Stop and Waste Valve Existing 2" Valve at irrigation Main	1	
⊕	VBSVD Valve Box VBSVD Professional Standard Valve Box 12" H Black with Drop-in Locking Green Lid	4	
⊕	Water Meter 2" Existing Water Meter with 3" service line	1	
—	Irrigation Lateral Line: PVC Schedule 40-NP 1/2"	646.3 L.F.	
—	Irrigation Lateral Line: PVC Schedule 40-NP 3/4"	44.7 L.F.	
—	Irrigation Lateral Line: PVC Schedule 40-NP 1"	14.4 L.F.	
—	Irrigation Lateral Line: PVC Schedule 40-NP 1 1/2"	7.1 L.F.	
—	Irrigation Mainline: PVC Schedule 40-NP 1/2"	189.6 L.F.	
—	Irrigation Mainline: PVC Schedule 40-NP 1 1/4"	192.7 L.F.	
—	Pipe Sleeve: PVC Class 200 SDR 21	91.2 L.F.	5/D105

PREPARED BY:

SALT LAKE CITY CORPORATION

DEPARTMENT OF COMMUNITY AND NEIGHBORHOODS

ENGINEERING DIVISION

340 SOUTH 200 EAST, SUITE 100 SALT LAKE CITY, UTAH 84114-2006
TELEPHONE: 801-535-1991
FAX: 801-535-6093
WWW.SLCGOV.COM

PREPARED BY: CONSULTANTS:

alta

TALISMAN

PROFESSIONAL SEAL:

PROJECT IDENTIFICATION:

FOOTHILLS TRAILHEAD IMPROVEMENTS

100% SUBMITTAL

SALT LAKE CITY, UTAH

PROJECT OWNER:

SALT LAKE CITY CORPORATION

451 SOUTH STATE STREET
SALT LAKE CITY, UTAH 84111-2836
WWW.SLCGOV.COM

DATE SUBMITTED:

MAY 5, 2023

MARK	DATE	DESCRIPTION

PREPARED BY: SLC CORP

CONTRACT #: PRK20027

JOB #:

DRAWING FILE: MMALPN

CHECKED BY: DFOSTER

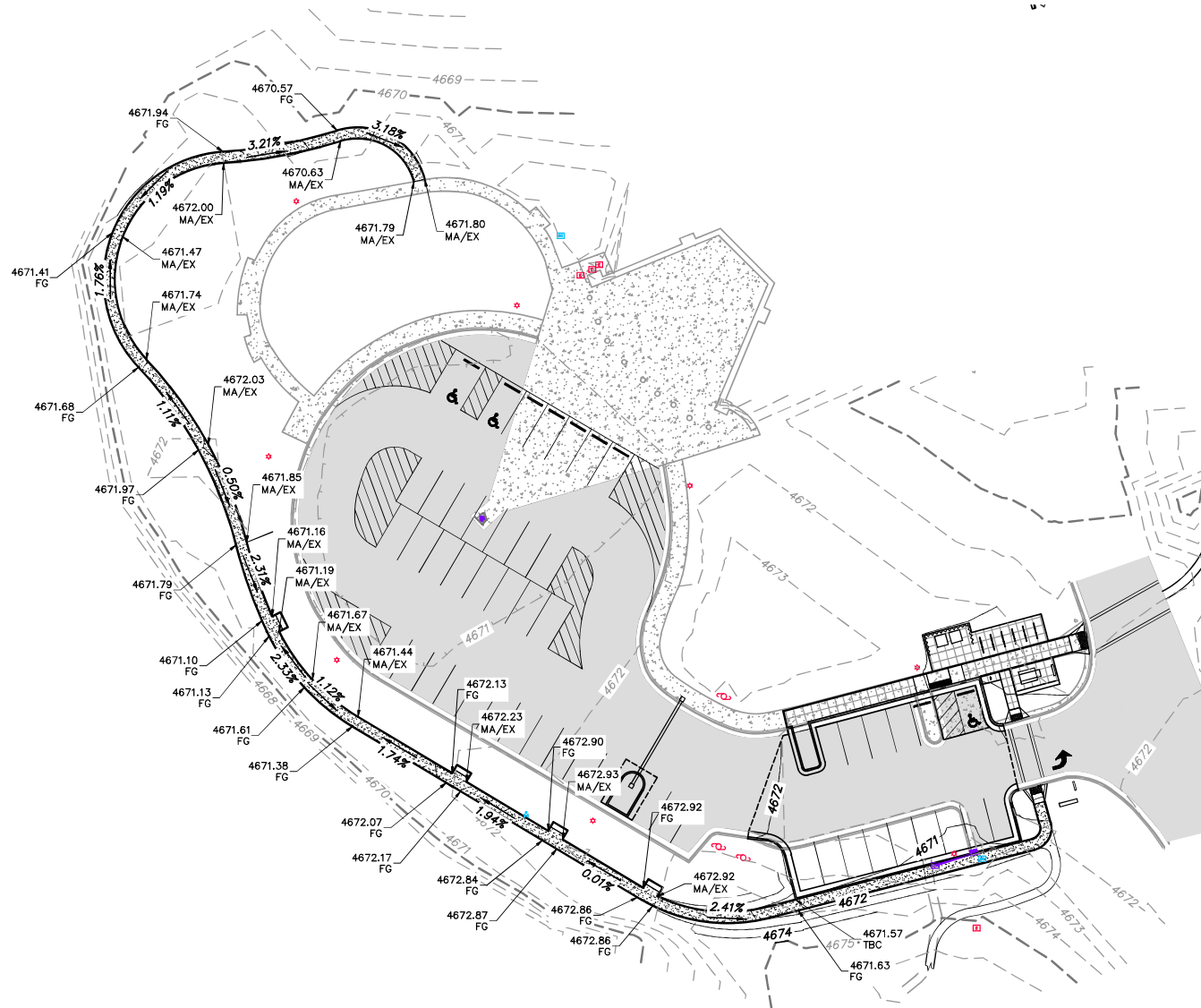
COPYRIGHT:

SHEET TITLE:

BONNEVILLE BOULEVARD IRRIGATION PLAN

SHEET IDENTIFIER:

I101



GENERAL NOTES:
ALL WORK TO COMPLY WITH APWA AND SALT LAKE CITY STANDARDS AND SPECIFICATIONS.

PROTECT/PRESERVE ALL EXISTING UTILITIES UNLESS OTHERWISE NOTED.

CONSTRUCTION CANNOT BEGIN UNTIL SWPPP IS APPROVED AND PRE-CONSTRUCTION MEETING IS HELD.

ABBREVIATIONS:

AC	ASPHALT CONCRETE
CS	CONCRETE SLAB
EX	EXISTING
FG	FINISHED GRADE
FL	FLOWLINE
LG	LIP OF GUTTER
MA	MATCH
SW	SIDEWALK
TBC	TOP BACK OF CURB
TG	TOP OF GRATE

NOTE: MAY CONTAIN ABBREVIATIONS THAT ARE NOT USED IN THIS PLAN SET.

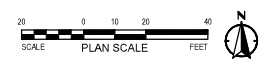
NOTE: CONTRACTOR TO POT HOLE TOP OF CULVERT AND NOTIFY ENGINEER IF HIGHER THAN INDICATED ON PLANS

LEGEND:

- PROPOSED DRAINAGE FLOWLINE (DETAIL H/SHEET 6106)
- XXXX.0 — PROPOSED CONTOUR (MAJOR)
- XXXX.5 — PROPOSED CONTOUR (MINOR)
- XXXX.0 — EXISTING CONTOUR (MAJOR)
- XXXX.5 — EXISTING CONTOUR (MINOR)

SCOPE OF WORK:
PROVIDE, INSTALL AND/OR CONSTRUCT THE FOLLOWING PER THE SPECIFICATIONS GIVEN OR REFERENCED, THE DETAILS NOTED, AND/OR AS SHOWN ON THE CONSTRUCTION DRAWINGS:

- (30) RELOCATE STREETLIGHT



PREPARED BY:
SALT LAKE CITY CORPORATION
DEPARTMENT OF COMMUNITY AND NEIGHBORHOODS
ENGINEERING DIVISION
340 SOUTH 200 EAST, SUITE 100, SALT LAKE CITY, UTAH 84143-5506
TELEPHONE: 801-438-7961
FAX: 801-535-4293
WWW.SLCOR.UTAH.GOV

PREPARED FOR:
TALISMAN
PROFESSIONAL SEAL

PROJECT IDENTIFICATION:
FOOTHILLS TRAILHEAD IMPROVEMENTS

100% SUBMITTAL

SALT LAKE CITY, UTAH

PROJECT OWNER:
SALT LAKE CITY CORPORATION
401 SOUTH STATE STREET
SALT LAKE CITY, UTAH 84111-2836
WWW.SLCOR.UTAH.GOV

DATE SUBMITTED:
MAY 5, 2023

MARK	DATE	DESCRIPTION

PREPARED BY:
CONTRACT #:
PROJECT #:
FILE #:
DRAWING FILE:
DRAWN BY:
CHECKED BY:
COPYRIGHT:

SHEET TITLE:
BONNEVILLE BLVD GRADING PLAN - TRAIL

SHEET IDENTIFIER:
GU102

