



GENERAL NOTES:


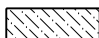



1. RETURN ALL REMOVED SIGNS TO SLC STREETS DIVISION.
2. PRESERVE AND PROTECT IMPROVEMENTS BEYOND LIMITS OF DISTURBANCE.
3. PRESERVE AND PROTECT EXISTING UTILITY LINES AND STRUCTURES.

1 LIMITS OF DISTURBANCE.

SCOPE OF WORK:

- 1 REMOVE GRAVEL PAVEMENT
- 2 REMOVE EXISTING LANDSCAPE
- 3 PROTECT EXISTING TREES
- 4 REMOVE EXISTING FENCE
- 5 SAWCUT AND REMOVE EXISTING CURB OR FLATWORK. CUT CURB DOWN FOR FLUSH DRIVEWAY ENTRY
- 6 REMOVE AND RELOCATE EXISTING SIGNS
- 7 CLEAR AND GRUB FOR SOFT SURFACE TRAIL
- 8 APPROXIMATE EXISTING TREE DRIP LINE

LEGEND:

-  EXISTING LANDSCAPE DEMO
-  EXISTING GRAVEL DEMO
-  SAWCUT AND REMOVE EXISTING CONCRETE CURB OR FLATWORK
-  EXISTING FENCE DEMO
-  REMOVE EXISTING TREE

PREPARED BY:
SALT LAKE CITY CORPORATION
 DEPARTMENT OF COMMUNITY AND NEIGHBORHOODS
 ENGINEERING DIVISION
 349 SOUTH 200 EAST, SUITE 100 SALT LAKE CITY, UTAH 84143-2006
 TELEPHONE: 801-535-7941 FAX: 801-535-6093
 WWW.SLC.GOV/COM

PREPARED BY CONSULTANTS:



PROFESSIONAL SEAL:

PROJECT IDENTIFICATION:

FOOTHILLS TRAILHEAD IMPROVEMENTS

100% SUBMITTAL

SALT LAKE CITY, UTAH

PROJECT OWNER:

SALT LAKE CITY CORPORATION
 451 SOUTH STATE STREET
 SALT LAKE CITY, UTAH 84111-2836
 WWW.SLC.GOV/COM

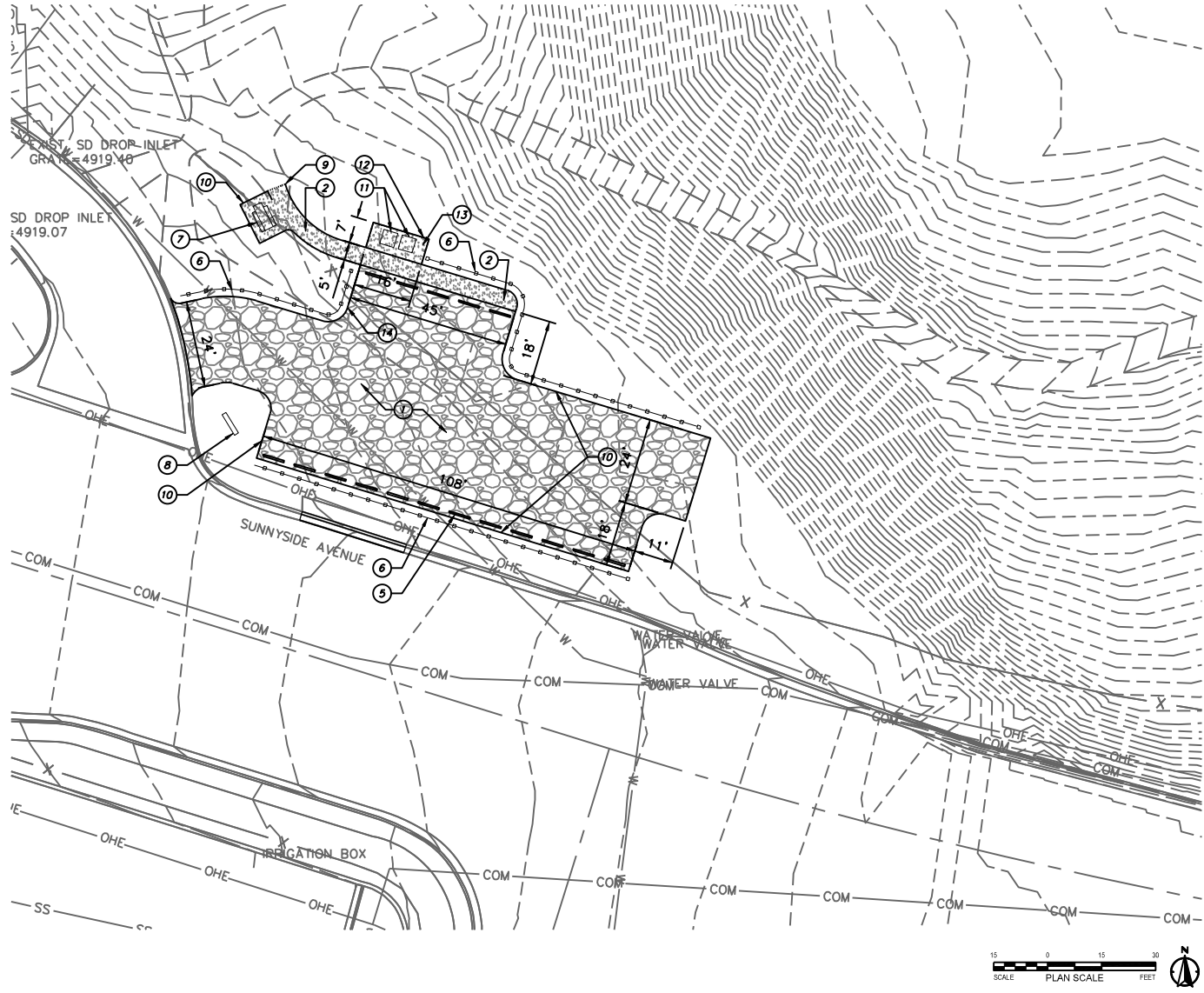
DATE SUBMITTED:
 MAY 5, 2023

MARK DATE DESCRIPTION

PREPARED BY: SLC CORP
 CONTRACT #:
 PROJECT #: PRK20027
 JOB #:
 DRAWING FILE:
 DRAWN BY: MHALPIN
 CHECKED BY: DFOSTER
 COPYRIGHT:

SHEET TITLE:
EMIGRATION DEMO PLAN

SHEET IDENTIFIER:
DM401



- GENERAL NOTES:**
1. ALL WORK TO COMPLY WITH APWA AND SALT LAKE CITY STANDARDS AND SPECIFICATIONS.
 2. ALL IMPROVEMENTS MUST COMPLY WITH ADA STANDARDS.
 3. SEE GRADING PLANS FOR ADDITIONAL DESIGN INFORMATION.

SCOPE OF WORK:
 PROVIDE, INSTALL AND/OR CONSTRUCT THE FOLLOWING PER THE SPECIFICATIONS GIVEN OR REFERENCED, THE DETAILS NOTED, AND/OR AS SHOWN ON THE CONSTRUCTION DRAWINGS:

- ① GRAVEL PARKING LOT (DETAIL 3, SHEET D102)
- ② CRUSHED AGGREGATE SURFACING FOR ACCESS PATHS & ACCESSIBLE PICNIC AREA (DETAIL 5, SHEET D102)
- ③ NOT USED
- ④ NOT USED
- ⑤ PRECAST CAR STOP (DETAIL 2, SHEET D102)
- ⑥ FENCING, TIMBER AND ROPE, 42" HEIGHT (DETAIL 3, SHEET D103)
- ⑦ PICNIC TABLE: TIMBERFORM 'ARBOR' ADA OR APPROVED EQUAL (DETAIL 5, SHEET D103)
- ⑧ VEHICULAR ENTRANCE SIGN (DETAIL 6, SHEET D103)
- ⑨ CRUSHED AGGREGATE TO MEET GRADE AT SOFT SURFACE PATH
- ⑩ EDGE OF GRAVEL
- ⑪ SPACE FOR TWO 4' x 4' PORTABLE RESTROOMS
- ⑫ PRIVACY SCREENING FOR PORTABLE RESTROOMS (6'6" H x 16' L x 7' W)
- ⑬ CONCRETE FLATWORK UNDER RESTROOMS (DETAIL 1, SHEET D101)
- ⑭ STEEL EDGING (DETAIL 5, SHEET D102)



PREPARED BY:
SALT LAKE CITY CORPORATION
 DEPARTMENT OF COMMUNITY AND NEIGHBORHOODS
 ENGINEERING DIVISION
 349 SOUTH 200 EAST, SUITE 100 SALT LAKE CITY, UTAH 84143-5006
 TELEPHONE: 801-535-7581
 FAX: 801-535-6993
 WWW.SLC.GOV/COM
 PREPARER CONSULTANTS:



PROFESSIONAL SEAL:

PROJECT IDENTIFICATION:
FOOTHILLS TRAILHEAD IMPROVEMENTS

100% SUBMITTAL

SALT LAKE CITY, UTAH

PROJECT OWNER:
SALT LAKE CITY CORPORATION
 451 SOUTH STATE STREET
 SALT LAKE CITY, UTAH 84111-2836
 WWW.SLC.GOV/COM

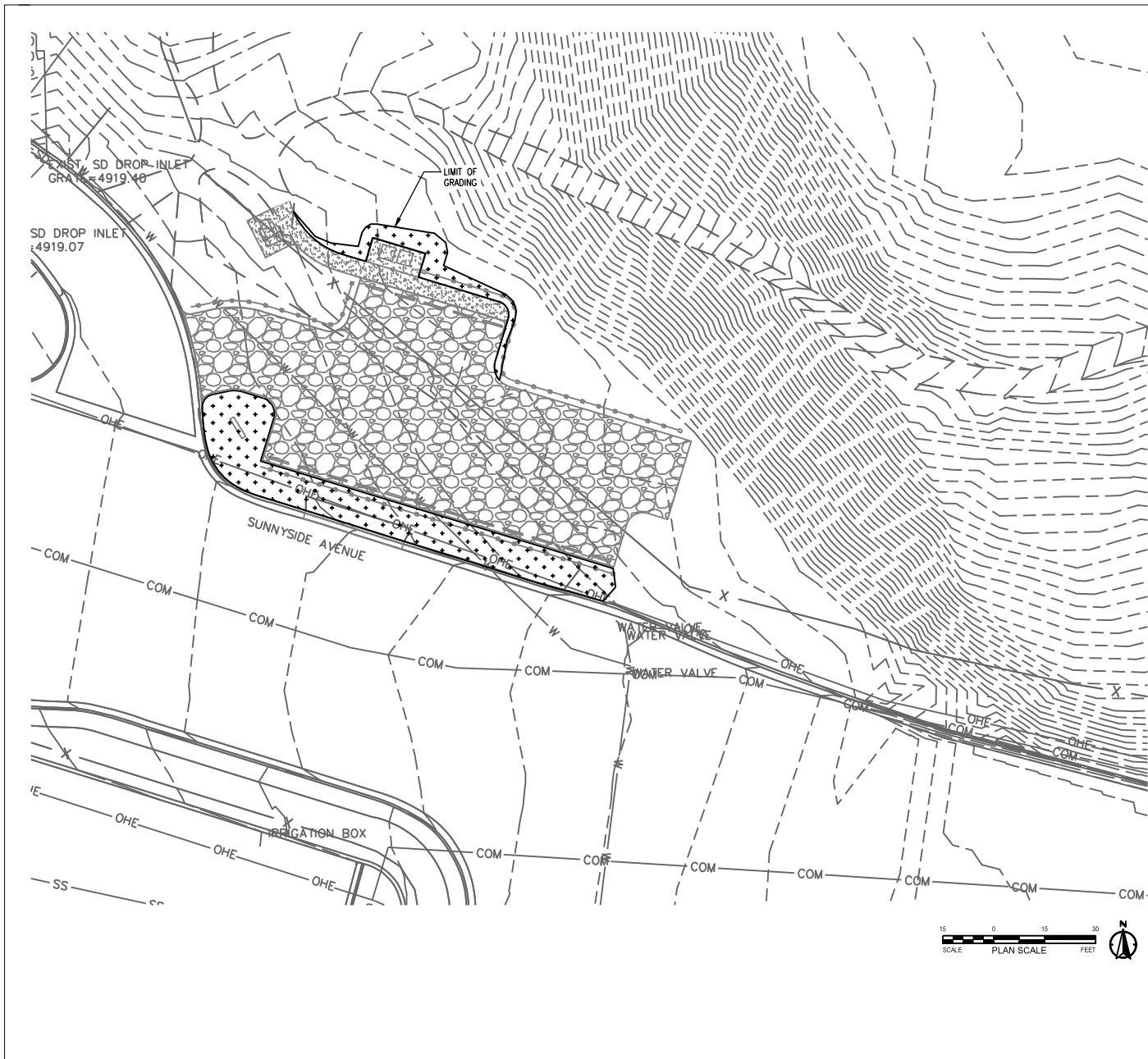
DATE SUBMITTED:
 MAY 5, 2023

MARK	DATE	DESCRIPTION

PREPARER #: SLC CORP
 CONTRACT #:
 PROJECT #: PRK20027
 JOB #:
 DRAWING FILE:
 DRAWN BY: MHALPIN
 CHECKED BY: DFOSTER
 COPYRIGHT:

SHEET TITLE:
EMIGRATION SITE PLAN

SHEET IDENTIFIER:
CP401



LANDSCAPE LEGEND

GREAT BASIN SEED: RANGE AND FOOTHILLS SEED MIX



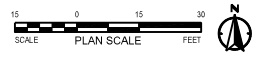
PERCENT IN MIX	SPECIES	SCIENTIFIC NAME
41%	SANDBERG BLUEGRASS	POA SECUNDA SANDBERGI
31%	SLENDER WHEATGRASS	ELYMUS TRACHYCAULUS
9%	BOTTLEBRUSH SQUIRRELTAIL	ELYMUS ELYMOIDES
7%	BASIN WILDRYE	LEYMUS CINERUS
6%	CRESTED WHEATGRASS	AGROPYRON CRISTATUM
3%	BLUE FLAX	LINUM PERENNE
3%	WESTERN YARROW	WHITE YARROW

NOTES:

1. SEED MIX PROVIDED BY GREAT BASIN SEED. DEFER TO ANY SPECIAL RECOMMENDATIONS PER SUPPLIER
2. SEEDS SHALL BE HYDROSEEDED AT A RATE OF 12 POUNDS PER ACRE.
3. ALL AREAS DISTURBED BY CONSTRUCTION SHALL BE RE-SEEDDED

IRRIGATION NOTES:

- 1 SEED MIX IRRIGATION SHALL BE PLANTED IN THE SPRING OR FALL AND HAND WATERED AS NEEDED FOR ESTABLISHMENT.



PREPARED BY:
SALT LAKE CITY CORPORATION
 DEPARTMENT OF COMMUNITY AND NEIGHBORHOODS
 ENGINEERING DIVISION
 349 SOUTH 200 EAST, SUITE 100 SALT LAKE CITY, UTAH 84143-2006
 TELEPHONE: 801-535-7941
 FAX: 801-535-6093
 WWW.SLC.GOV/COM
 PREPARER CONSULTANTS:

 PROFESSIONAL SEAL:

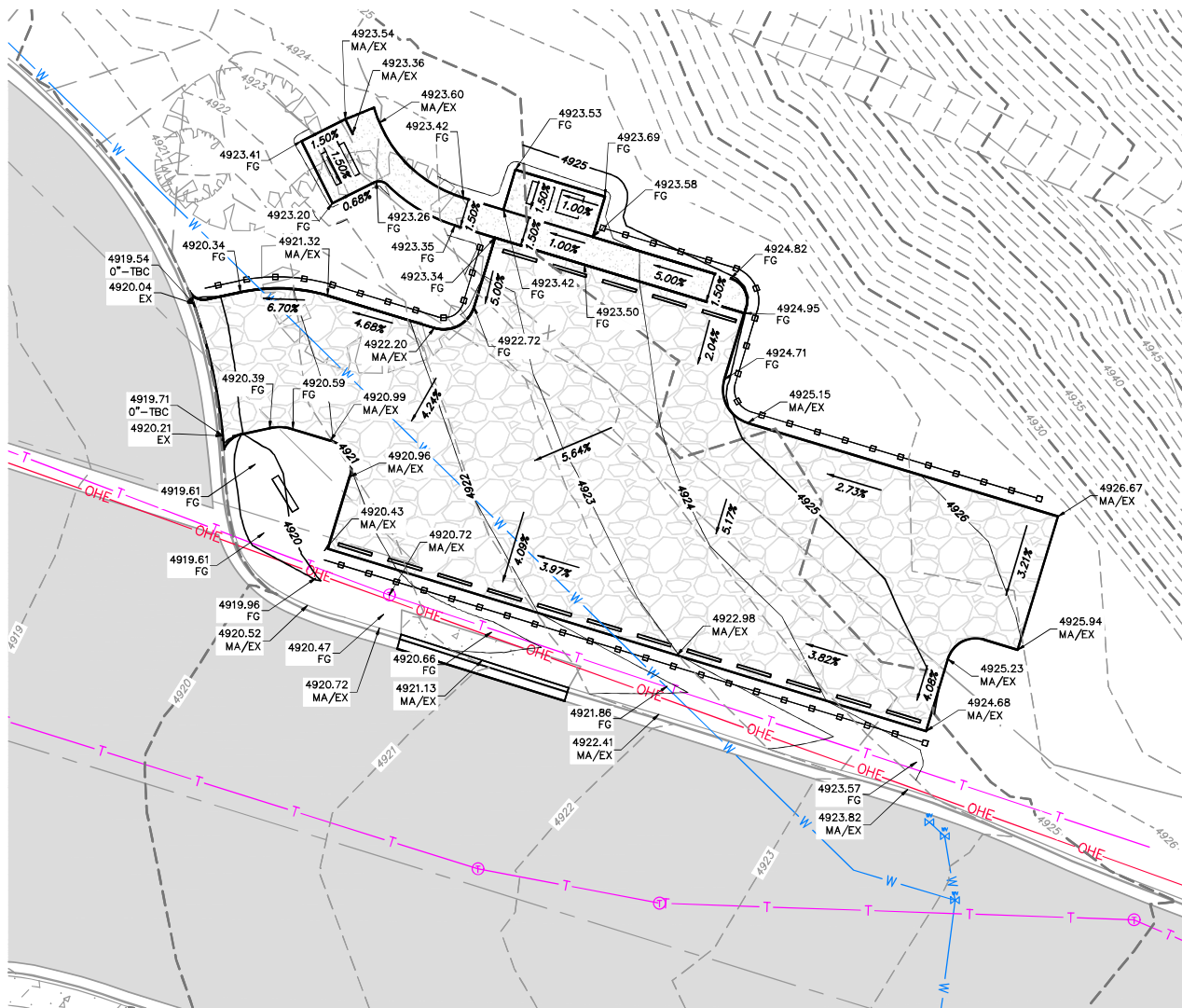
PROJECT IDENTIFICATION:
FOOTHILLS TRAILHEAD IMPROVEMENTS
 100% SUBMITTAL
 SALT LAKE CITY, UTAH
 PROJECT OWNER:
SALT LAKE CITY CORPORATION
 451 SOUTH STATE STREET
 SALT LAKE CITY, UTAH 84111-2836
 WWW.SLC.GOV/COM
 DATE SUBMITTED:
 MAY 5, 2023

MARK	DATE	DESCRIPTION

PREPARER #: SLC CORP
 CONTRACT #:
 PROJECT #: PRK20027
 JOB #:
 DRAWING FILE:
 DRAWN BY: MHALPIN
 CHECKED BY: DFOSTER
 COPYRIGHT:

SHEET TITLE:
EMIGRATION LANDSCAPE PLAN

SHEET IDENTIFIER:
L401



GENERAL NOTES:

ALL WORK TO COMPLY WITH APWA AND SALT LAKE CITY STANDARDS AND SPECIFICATIONS.

PROTECT/PRESERVE ALL EXISTING UTILITIES UNLESS OTHERWISE NOTED.

CONSTRUCTION CANNOT BEGIN UNTIL SWPPP IS APPROVED AND PRE-CONSTRUCTION MEETING IS HELD.

ABBREVIATIONS:

AC	ASPHALT CONCRETE
CS	CONCRETE SLAB
EX	EXISTING
FG	FINISHED GRADE
FL	FLOWLINE
LG	LIP OF GUTTER
MA	MATCH
SW	SIDEWALK
TBC	TOP BACK OF CURB
TG	TOP OF GRATE

NOTE: MAY CONTAIN ABBREVIATIONS THAT ARE NOT USED IN THIS PLAN SET.
NOTE: CONTRACTOR TO POTHOLE TOP OF CULVERT AND NOTIFY ENGINEER IF HIGHER THAN INDICATED ON PLANS

LEGEND:

	PROPOSED DRAINAGE FLOWLINE (DETAIL "H" SHEET 010)
	PROPOSED CONTOUR (MAJOR)
	PROPOSED CONTOUR (MINOR)
	EXISTING CONTOUR (MAJOR)
	EXISTING CONTOUR (MINOR)

PREPARED BY:
SALT LAKE CITY CORPORATION
 DEPARTMENT OF COMMUNITY AND NEIGHBORHOODS
 ENGINEERING DIVISION
 340 SOUTH 300 EAST SUITE 100 SALT LAKE CITY, UTAH 84144-5506
 TELEPHONE 801-535-7901
 FAX 801-535-4693
 WWW.SLCOR.UTAH.GOV
 PREPARED CONSULTANTS:

TALISMAN
 CIVIL ENGINEERS
 PROFESSIONAL SEAL

PROJECT IDENTIFICATION:
FOOTHILLS TRAILHEAD IMPROVEMENTS
100% SUBMITTAL
SALT LAKE CITY, UTAH
 PROJECT OWNER:
SALT LAKE CITY CORPORATION
 451 SOUTH STATE STREET
 SALT LAKE CITY, UTAH 84111-2836
 WWW.SLCOR.UTAH.GOV
 DATE SUBMITTED:
 MAY 5, 2023

MARK	DATE	DESCRIPTION

PREPARED BY:	JBASCH
CONTRACT #:	PRK20027
FILE #:	
DRAWING FILE:	
DRAWN BY:	JBASCH
CHECKED BY:	DEBOUTRIQUE
COPYRIGHT:	

EMIGRATION GRADING & UTILITY PLAN

SHEET IDENTIFIER:
GU401

