

**GENERAL NOTES:**

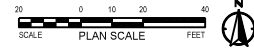
1. RETURN ALL REMOVED SIGNS TO SLC STREETS DIVISION.
  2. PRESERVE AND PROTECT IMPROVEMENTS BEYOND LIMITS OF DISTURBANCE.
  3. PRESERVE AND PROTECT EXISTING UTILITY LINES AND STRUCTURES.
- 1 LIMITS OF DISTURBANCE.

**SCOPE OF WORK:**

- |   |                                     |
|---|-------------------------------------|
| 1 SAW CUT ASPHALT                         | 7 NOT USED                          |
| 2 SAW CUT & REMOVE CONCRETE CURB & GUTTER | 8 PROTECT EXISTING COMMUNITY GARDEN |
| 3 NOT USED                                | 9 PROTECT EXISTING LIGHT POLE       |
| 4 REMOVE ASPHALT                          |                                     |
| 5 PROTECT EXISTING STRUCTURE              |                                     |
| 6 PROTECT EXISTING FENCE                  |                                     |

**LEGEND:**

- |  |                                      |
|--|--------------------------------------|
|  | EXISTING LANDSCAPE DEMO              |
|  | EXISTING CONCRETE CURB & GUTTER DEMO |
|  | EXISTING ASPHALT DEMO                |
|  | REMOVE AND SALVAGE EXISTING FENCE    |



PREPARED BY:  
**SALT LAKE CITY CORPORATION**  
 DEPARTMENT OF COMMUNITY AND NEIGHBORHOODS  
 ENGINEERING DIVISION  
 349 SOUTH 200 EAST, SUITE 100 SALT LAKE CITY, UTAH 84114-2006  
 TELEPHONE: 801-535-7941  
 FAX: 801-535-6093  
 WWW.SLC.GOV/COM  
 PREPARER CONSULTANTS:



PROFESSIONAL SEAL:

PROJECT IDENTIFICATION:  
**FOOTHILLS TRAILHEAD IMPROVEMENTS**

100% SUBMITTAL

**SALT LAKE CITY, UTAH**

PROJECT OWNER:  
**SALT LAKE CITY CORPORATION**

451 SOUTH STATE STREET  
 SALT LAKE CITY, UTAH 84111-2836  
 WWW.SLC.GOV/COM

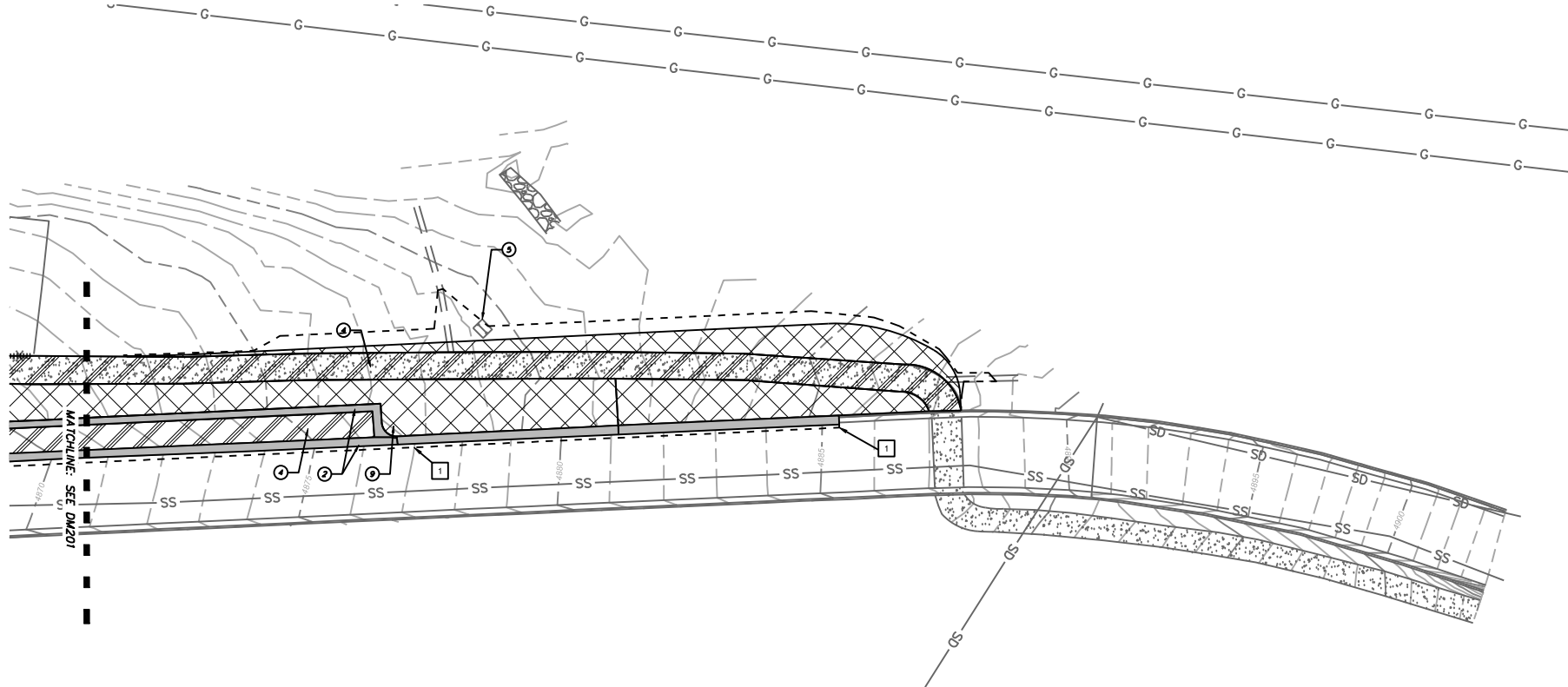
DATE SUBMITTED:  
 MAY 5, 2023

MARK	DATE	DESCRIPTION

PREPARER #: SLC CORP  
 CONTRACT #:  
 PROJECT #: PRK20027  
 JOB #:  
 DRAWING FILE:  
 DRAWN BY: MHALPIN  
 CHECKED BY: DFOSTER  
 COPYRIGHT:

SHEET TITLE:  
**POPPERTON PARK DEMO PLAN**

SHEET IDENTIFIER:  
**DM201**



**GENERAL NOTES:**

1. RETURN ALL REMOVED SIGNS TO SLC STREETS DIVISION.
2. PRESERVE AND PROTECT IMPROVEMENTS BEYOND LIMITS OF DISTURBANCE.
3. PRESERVE AND PROTECT EXISTING UTILITY LINES AND STRUCTURES.

1 LIMITS OF DISTURBANCE.

**SCOPE OF WORK:**

- |   |                                     |
|---|-------------------------------------|
| 1 SAW CUT ASPHALT                         | 7 NOT USED                          |
| 2 SAW CUT & REMOVE CONCRETE CURB & GUTTER | 8 PROTECT EXISTING COMMUNITY GARDEN |
| 3 NOT USED                                | 9 PROTECT EXISTING LIGHT POLE       |
| 4 REMOVE ASPHALT                          |                                     |
| 5 PROTECT EXISTING STRUCTURE              |                                     |
| 6 PROTECT EXISTING FENCE                  |                                     |

**LEGEND:**

- |  |                                      |
|--|--------------------------------------|
|  | EXISTING LANDSCAPE DEMO              |
|  | EXISTING CONCRETE CURB & GUTTER DEMO |
|  | EXISTING ASPHALT DEMO                |
|  | REMOVE AND SALVAGE EXISTING FENCE    |

PREPARED BY:  
**SALT LAKE CITY CORPORATION**  
 DEPARTMENT OF COMMUNITY AND NEIGHBORHOODS  
 ENGINEERING DIVISION  
 349 SOUTH 200 EAST, SUITE 200 SALT LAKE CITY, UTAH 84114-2006  
 TELEPHONE: 801-535-7591  
 FAX: 801-535-6093  
 WWW.SLC.GOV/COM



PROFESSIONAL SEAL:

PROJECT IDENTIFICATION:  
**FOOTHILLS TRAILHEAD IMPROVEMENTS**

100% SUBMITTAL

**SALT LAKE CITY, UTAH**

PROJECT OWNER:  
**SALT LAKE CITY CORPORATION**

451 SOUTH STATE STREET  
 SALT LAKE CITY, UTAH 84111-2836  
 WWW.SLC.GOV/COM

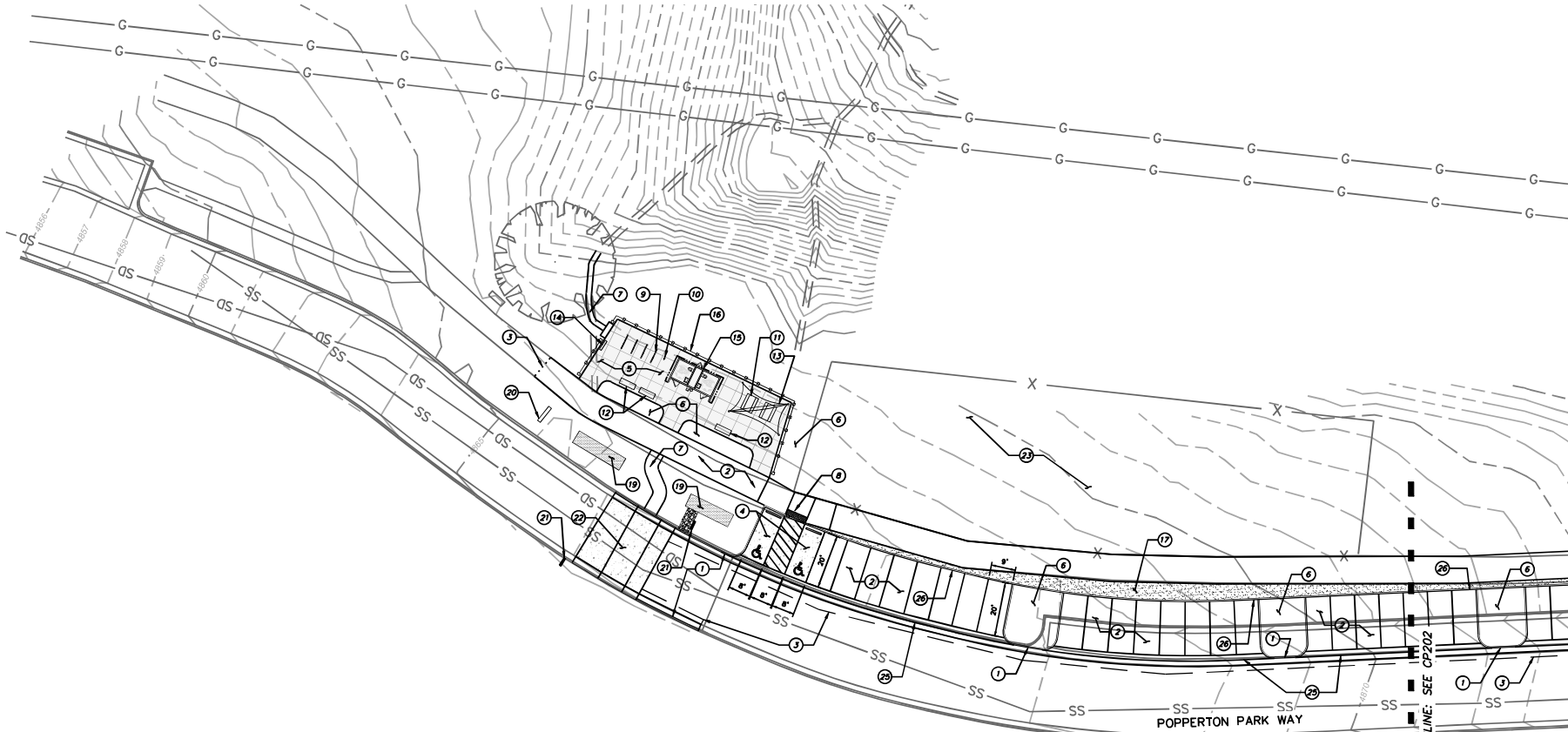
DATE SUBMITTED:  
 MAY 5, 2023

MARK	DATE	DESCRIPTION

PREPARER #: SLC CORP  
 CONTRACT #:   
 PROJECT #: PRN20027  
 JOB #:  
 DRAWING FILE:   
 DRAWN BY: MHALPIN  
 CHECKED BY: DFOSTER  
 COPYRIGHT:

SHEET TITLE:  
**POPPERTON PARK DEMO PLAN**

SHEET IDENTIFIER:  
**DM202**



PREPARED BY:  
**SALT LAKE CITY CORPORATION**  
 DEPARTMENT OF COMMUNITY AND NEIGHBORHOODS  
 ENGINEERING DIVISION  
 349 SOUTH 200 EAST, SUITE 100 EAST  
 LAKE CITY, UTAH 84114-2006  
 TELEPHONE: 801-458-1991  
 FAX: 801-458-6093  
 WWW.SLC.GOV/COM  
 PREPARED BY CONSULTANTS:



PROFESSIONAL SEAL:

PROJECT IDENTIFICATION:  
**FOOTHILLS TRAILHEAD IMPROVEMENTS**

100% SUBMITTAL

SALT LAKE CITY, UTAH

PROJECT OWNER:  
**SALT LAKE CITY CORPORATION**  
 451 SOUTH STATE STREET  
 SALT LAKE CITY, UTAH 84111-2835  
 WWW.SLC.GOV/COM

DATE SUBMITTED:  
 MAY 5, 2022

MARK	DATE	DESCRIPTION

PREPARED BY: SLC CORP  
 CONTRACT #: PRR20027  
 PROJECT #: PRR20027  
 JOB #:  
 DRAWING FILE:  
 DRAWING BY: MAMLEN  
 CHECKED BY: DFOSTER  
 COPYRIGHT:

SHEET TITLE:  
**POPPERTON PARK SITE PLAN**

SHEET IDENTIFIER:  
**CP201**

**GENERAL NOTES:**  
 1. ALL WORK TO COMPLY WITH APWA AND SALT LAKE CITY STANDARDS AND SPECIFICATIONS.  
 2. ALL IMPROVEMENTS MUST COMPLY WITH ADA STANDARDS.  
 3. SEE GRADING PLANS FOR ADDITIONAL DESIGN INFORMATION.

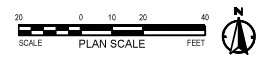
**SCOPE OF WORK:**  
 PROVIDE, INSTALL AND/OR CONSTRUCT THE FOLLOWING PER THE SPECIFICATIONS GIVEN OR REFERENCED, THE DETAILS NOTED, AND/OR AS SHOWN ON THE CONSTRUCTION DRAWINGS:

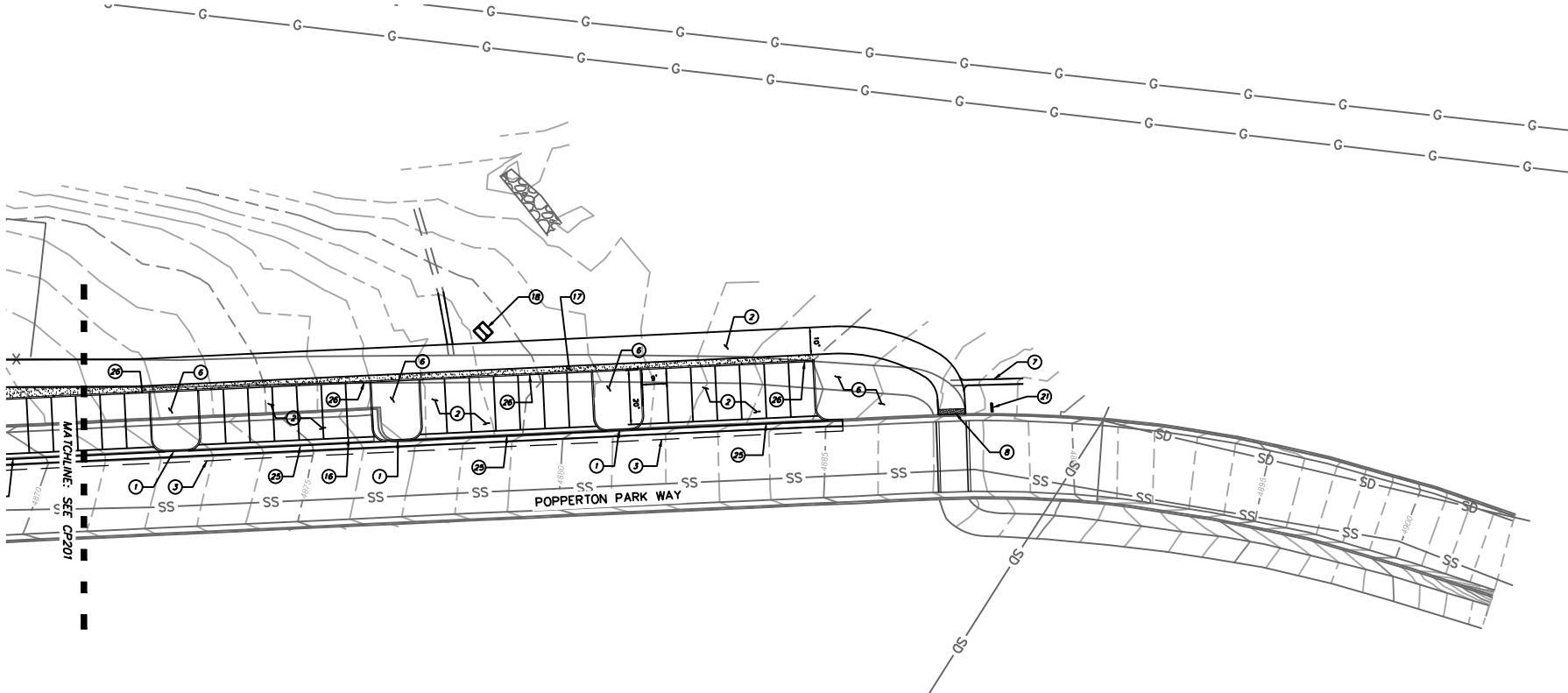
- ① CURB AND CUTTER, TYPE A (DETAIL 5, SHEET D101)
- ② ASPHALT PAVEMENT, 3" THICK WITH 8" AGGREGATE BASE (DETAIL 1, SHEET D102)
- ③ ASPHALT PAVEMENT TIE-IN, PER APWA 251
- ④ CONCRETE PAVEMENT AT ADA LOADING ZONES AND PARKING SPACES
- ⑤ COLORED PORTLAND CEMENT CONCRETE PAVEMENT (PCCP), 4" THICK WITH 4" BASE (DETAIL 1, SHEET D101)

- ⑥ LANDSCAPE AREA, SEE SHEETS L201 AND L202 FOR PLANT SCHEDULE AND IRRIGATION INFORMATION
- ⑦ NATIVE SOIL TRAIL, 42" WIDTH, BY OTHERS
- ⑧ ADA RAMP & DETECTABLE WARNING SURFACE, TRUNCATED DOME PAVERS (DETAIL 3, SHEET D101)
- ⑨ BIKE RACK; DERO 'BIKE' BIKE RACK OR APPROVED EQUAL (DETAIL 1, SHEET D103)
- ⑩ BIKE REPAIR STATION RELOCATED FROM CURRENT LOCATION IN PARK
- ⑪ PICNIC TABLE; TIMBERFORM 'ARBOR' ADA OR APPROVED EQUAL (DETAIL 5, SHEET D103)

- ⑫ BENCH; TIMBERFORM PARKWAY OR APPROVED EQUAL (DETAIL 4, SHEET D103)
- ⑬ SHADE SAIL STRUCTURE; SII OR APPROVED EQUAL (DETAIL 7, SHEET D102)
- ⑭ TRAILHEAD INFORMATION KIOSK (BY OTHERS)
- ⑮ PRECAST CONCRETE RESTROOM, PLUMBED, TWO TOILETS; CXT DENALI 9'-11" X 17'-2" OR APPROVED EQUAL
- ⑯ FENCING, TIMBER AND ROPE, 42" HEIGHT (DETAIL 3, D103)
- ⑰ CRUSHER FINES BETWEEN PATH & CURB
- ⑱ PROTECT EXISTING STRUCTURE

- ⑲ BIOSWALE / GREEN INFRASTRUCTURE AREA
- ⑳ VEHICULAR ENTRANCE SIGN (DETAIL 6, SHEET D103)
- ㉑ "PEDESTRIAN CROSSING" SIGN, COMPLY WITH MUTCD
- ㉒ MARKED CROSSWALK; RAISED SPEED TABLE
- ㉓ EXISTING COMMUNITY GARDEN
- ㉔ NOT USED
- ㉕ 4' CONCRETE WATERWAY PER APWA #211
- ㉖ CURB, TYPE P (DETAIL 4, SHEET D101)





**GENERAL NOTES:**  
 1. ALL WORK TO COMPLY WITH APWA AND SALT LAKE CITY STANDARDS AND SPECIFICATIONS.  
 2. ALL IMPROVEMENTS MUST COMPLY WITH ADA STANDARDS.  
 3. SEE GRADING PLANS FOR ADDITIONAL DESIGN INFORMATION.

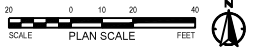
**SCOPE OF WORK:**  
 PROVIDE, INSTALL AND/OR CONSTRUCT THE FOLLOWING PER THE SPECIFICATIONS GIVEN OR REFERENCED, THE DETAILS NOTED, AND/OR AS SHOWN ON THE CONSTRUCTION DRAWINGS:

- ① CURB AND GUTTER, TYPE A (DETAIL 5, SHEET D101)
- ② ASPHALT PAVEMENT, 3" THICK WITH 8" AGGREGATE BASE (DETAIL 1, SHEET D102)
- ③ ASPHALT PAVEMENT TIE-IN, PER APWA 251
- ④ CONCRETE PAVEMENT AT ADA LOADING ZONES AND PARKING SPACES
- ⑤ COLORED PORTLAND CEMENT CONCRETE PAVEMENT (PCCP), 4" THICK WITH 4" BASE (DETAIL 1, SHEET D101)

- ⑥ LANDSCAPE AREA, SEE SHEETS L201 AND L202 FOR PLANT SCHEDULE AND IRRIGATION INFORMATION
- ⑦ NATIVE SOIL TRAIL, 42" WIDTH, BY OTHERS
- ⑧ ADA RAMP & DETECTABLE WARNING SURFACE, TRUNCATED DOME PAVERS (DETAIL 3, SHEET D101)
- ⑨ BIKE RACK: DERO "BIKE" BIKE RACK OR APPROVED EQUAL (DETAIL 1, SHEET D103)
- ⑩ BIKE REPAIR STATION RELOCATED FROM CURRENT LOCATION IN PARK
- ⑪ PICNIC TABLE: TIMBERFORM "ARBOR" ADA OR APPROVED EQUAL (DETAIL 5, SHEET D103)

- ⑫ BENCH: TIMBERFORM PARKWAY OR APPROVED EQUAL (DETAIL 4, SHEET D103)
- ⑬ SHADE SAIL STRUCTURE: SH OR APPROVED EQUAL (DETAIL 7, SHEET D102)
- ⑭ TRAILHEAD INFORMATION KIOSK (BY OTHERS)
- ⑮ PRECAST CONCRETE RESTROOM, PLUMBED, TWO TOILETS. CXT DENALI 9'-11" X 17'-2" OR APPROVED EQUAL
- ⑯ FENCING, TIMBER AND ROPE, 42" HEIGHT (DETAIL 3, D103)
- ⑰ CRUSHER FINES BETWEEN PATH & CURB
- ⑱ PROTECT EXISTING STRUCTURE

- ⑲ BIOSWALE / GREEN INFRASTRUCTURE AREA
- ⑳ VEHICULAR ENTRANCE SIGN (DETAIL 6, SHEET D103)
- ㉑ "PEDESTRIAN CROSSING" SIGN, COMPLY WITH MUTCD
- ㉒ MARKED CROSSWALK: RAISED SPEED TABLE
- ㉓ EXISTING COMMUNITY GARDEN
- ㉔ NOT USED
- ㉕ 4' CONCRETE WATERWAY PER APWA #211
- ㉖ CURB, TUPE P (DETAIL 4, SHEET D101)



PREPARED BY:  
**SALT LAKE CITY CORPORATION**  
 DEPARTMENT OF COMMUNITY AND NEIGHBORHOODS  
 ENGINEERING DIVISION  
 349 SOUTH 200 EAST, SUITE 100 SALT LAKE CITY, UTAH 84114-2006  
 TELEPHONE: 801-535-1941  
 FAX: 801-535-6093  
 WWW.SLC.GOV/COM



PROFESSIONAL SEAL:

PROJECT IDENTIFICATION:  
**FOOTHILLS TRAILHEAD IMPROVEMENTS**

100% SUBMITTAL

**SALT LAKE CITY, UTAH**

PROJECT OWNER:  
**SALT LAKE CITY CORPORATION**  
 451 SOUTH STATE STREET  
 SALT LAKE CITY, UTAH 84111-2836  
 WWW.SLC.GOV/COM

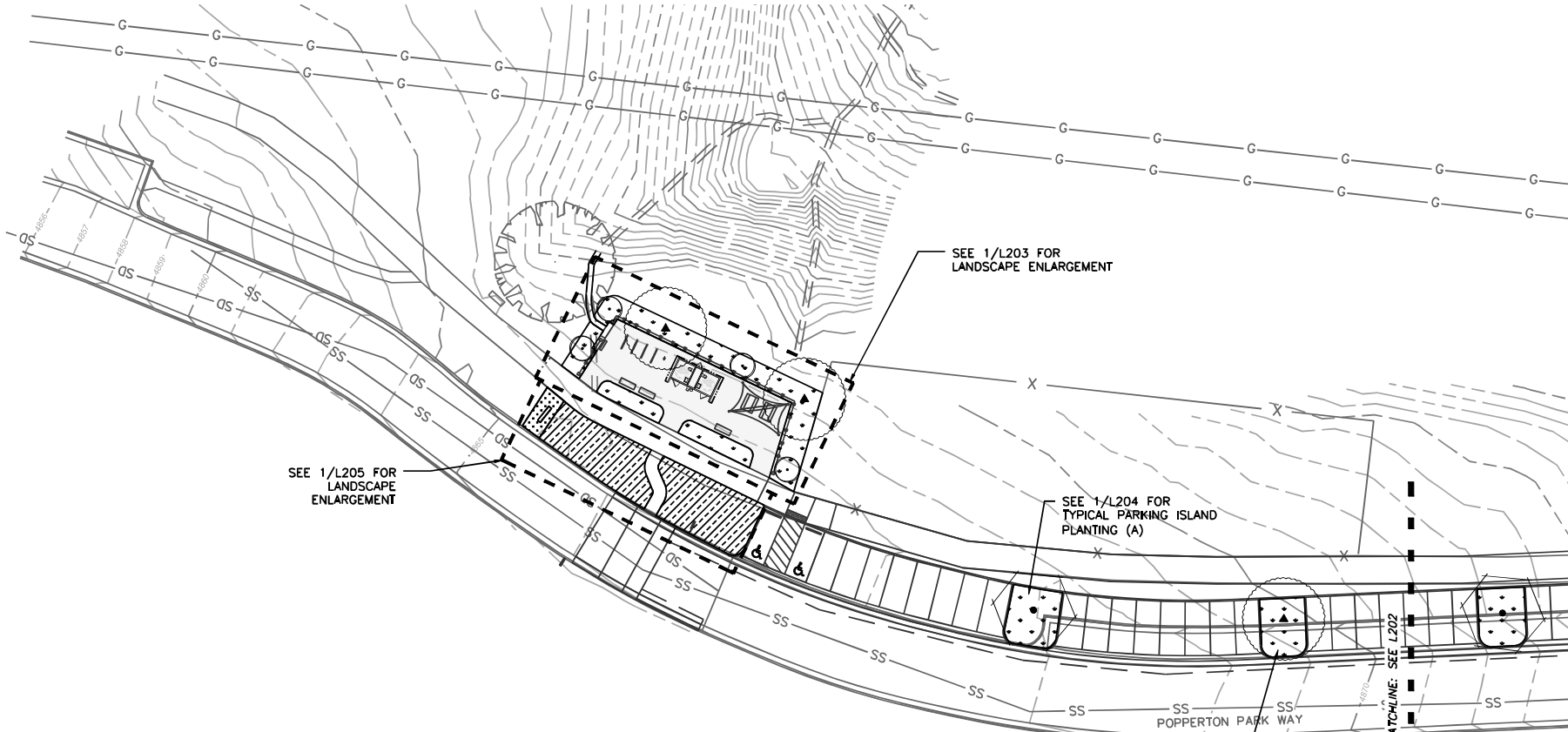
DATE SUBMITTED:  
 MAY 5, 2023

MARK	DATE	DESCRIPTION

PREPARED BY: SLC CORP  
 CONTRACT #: PRK20027  
 JOB #:  
 DRAWING FILE:  
 DRAWN BY: MHALPIN  
 CHECKED BY: DFOSTER  
 COPYRIGHT:

SHEET TITLE:  
**POPPERTON PARK SITE PLAN**

SHEET IDENTIFIER:  
**CP202**



**LANDSCAPE LEGEND**

BOTANICAL NAME:	COMMON NAME:	SIZE:	QTY:
<b>TREES (GRAPHIC SCALE DIFFERS FROM PLANS)</b>			
	ACER GRANDIDENTATUS	BIGTOOTH MAPLE	2" CAL. 3
	CELIS OCCIDENTALIS	HACKBERRY	2" CAL. 3
	AMELANCHIER UTAHENSIS	UTAH SERVICEBERRY	2" CAL. 2
	ULMUS AMERICANA 'VALLEY FORGE'	VALLEY FORGE ELM	2" CAL. 4
	QUERCUS GAMBELII	GAMBEL OAK	2" CAL. 4

**GREAT BASIN SEED: RANGE AND FOOTHILLS SEED MIX**

PERCENT IN MIX	SPECIES	SCIENTIFIC NAME
41%	SANDBERG BLUEGRASS	POA SECUNDA SANDBERGII
31%	SLENDER WHEATGRASS	ELYMUS TRACHYCAULUS
9%	BOTTLEBRUSH SQUIRRELTAIL	ELYMUS ELYMOIDES
7%	BASIN WILDRIE	LEYMUS CINERUS
6%	CRESTED WHEATGRASS	AGROPYRON CRISTATUM
3%	BLUE FLAX	LINUM PERENNE
3%	WESTERN YARROW	WHITE YARROW

**NOTES:**

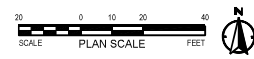
- SEED MIX PROVIDED BY GREAT BASIN SEED. DEFER TO ANY SPECIAL RECOMMENDATIONS PER SUPPLIER
- SEEDS SHALL BE HYDROSEEDDED AT A RATE OF 12 POUNDS PER ACRE.
- ALL AREAS DISTURBED BY CONSTRUCTION SHALL BE RE-SEEDDED

**STORMWATER TREATMENT**

SEE DETAILED ENLARGEMENT ON SHEET L204

**DECORATIVE LANDSCAPE**

SEE DETAILED ENLARGEMENTS ON SHEETS L203 & L204



PREPARED BY:  
**SALT LAKE CITY CORPORATION**  
 DEPARTMENT OF COMMUNITY AND NEIGHBORHOODS  
 ENGINEERING DIVISION  
 349 SOUTH 200 EAST, SUITE 100 EAST  
 SALT LAKE CITY, UTAH 84111-2506  
 TELEPHONE: 801-438-7941  
 FAX: 801-438-6093  
 WWW.SLC.GOV/COM  
 PREPARER CONSULTANTS:  
  
  
 PROFESSIONAL SEAL:

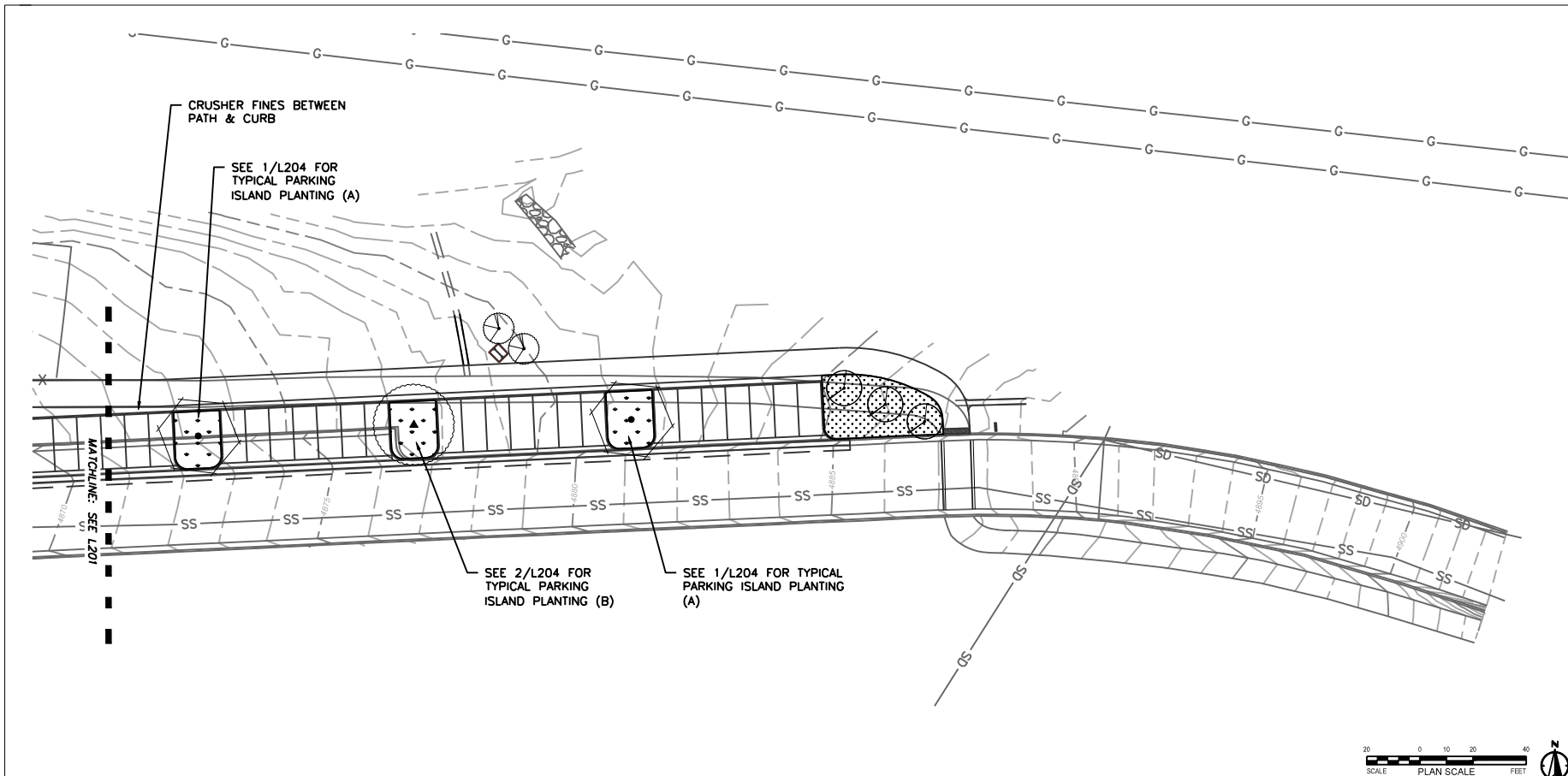
PROJECT IDENTIFICATION:  
**FOOTHILLS TRAILHEAD IMPROVEMENTS**  
 100% SUBMITTAL  
 SALT LAKE CITY, UTAH  
 PROJECT OWNER:  
**SALT LAKE CITY CORPORATION**  
 451 SOUTH STATE STREET  
 SALT LAKE CITY, UTAH 84111-2836  
 WWW.SLC.GOV/COM  
 DATE SUBMITTED:  
 MAY 9, 2023

MARK	DATE	DESCRIPTION

PREPARER #: SLC CORP  
 CONTRACT #:  
 PROJECT #: PRB20027  
 JOB #:  
 DRAWING FILE:  
 DRAWN BY: MMALFN  
 CHECKED BY: DPSTFR  
 COPYRIGHT:

SHEET TITLE:  
**POPERTON PARK LANDSCAPE PLAN**

SHEET IDENTIFIER:  
**L201**



**LANDSCAPE LEGEND**

BOTANICAL NAME:	COMMON NAME:	SIZE:	QTY:
<b>TREES (GRAPHIC SCALE DIFFERS FROM PLANS)</b>			
	ACER GRANDIDENTATUM	BIGTOOTH MAPLE	2" CAL. 3
	CELTIS OCCIDENTALIS	HACKBERRY	2" CAL. 3
	AMELANCHIER UTAHENSIS	UTAH SERVICEBERRY	2" CAL. 2
	ULMUS AMERICANA 'VALLEY FORGE'	VALLEY FORGE ELM	2" CAL. 4
	QUERCUS GAMBELII	GAMBEL OAK	2" CAL. 4

**GREAT BASIN SEED: RANGE AND FOOTHILLS SEED MIX**

PERCENT IN MIX	SPECIES	SCIENTIFIC NAME
41%	SANDBERG BLUEGRASS	POA SECUNDA SANDBERGII
31%	SLENDER WHEATGRASS	ELYMUS TRACHYCAULUS
9%	BOTTLEBRUSH SQUIRRELTAIL	ELYMUS ELYMOIDES
7%	BASIN WILDRIE	LEYMUS CINERUS
6%	CRESTED WHEATGRASS	AGROPYRON CRISTATUM
3%	BLUE FLAX	LINUM PERENNE
3%	WESTERN YARROW	WHITE YARROW

**NOTES:**

- SEED MIX PROVIDED BY GREAT BASIN SEED. DEFER TO ANY SPECIAL RECOMMENDATIONS PER SUPPLIER.
- SEEDS SHALL BE HYDROSEEDING AT A RATE OF 12 POUNDS PER ACRE.
- ALL AREAS DISTURBED BY CONSTRUCTION SHALL BE RE-SEEDING

**STORMWATER TREATMENT**

SEE DETAILED ENLARGEMENT ON SHEET L204

**DECORATIVE LANDSCAPE**

SEE DETAILED ENLARGEMENTS ON SHEETS L203 & L204

PREPARED BY:  
**SALT LAKE CITY CORPORATION**  
 DEPARTMENT OF COMMUNITY AND NEIGHBORHOODS  
 ENGINEERING DIVISION  
 349 SOUTH 200 EAST, SUITE 100 SALT LAKE CITY, UTAH 84114-2006  
 TELEPHONE: 801-535-1941 FAX: 801-535-6093  
 WWW.SLC.GOV/COM  
 PREPARER CONSULTANTS:



PROFESSIONAL SEAL:

**PROJECT IDENTIFICATION:**

**FOOTHILLS TRAILHEAD IMPROVEMENTS**

**100% SUBMITTAL**

**SALT LAKE CITY, UTAH**

PROJECT OWNER:

**SALT LAKE CITY CORPORATION**

451 SOUTH STATE STREET  
 SALT LAKE CITY, UTAH 84111-2836  
 WWW.SLC.GOV/COM

DATE SUBMITTED:

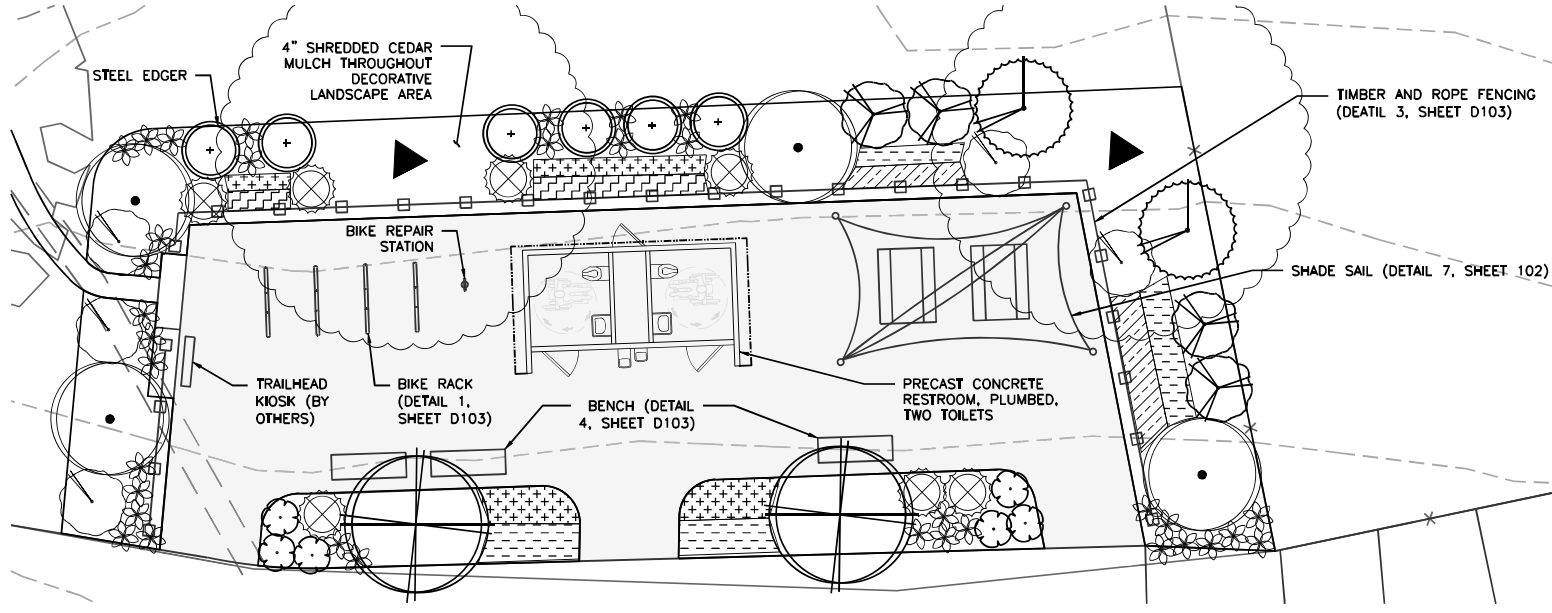
MAY 5, 2023

MARK	DATE	DESCRIPTION

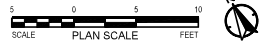
PREPARER #: SLC CORP  
 CONTRACT #:   
 PROJECT #: PRK20027  
 JOB #:  
 DRAWING FILE:  
 DRAWN BY: MHALPIN  
 CHECKED BY: DFOSTER  
 COPYRIGHT:

SHEET TITLE:  
**POPPERTON PARK LANDSCAPE PLAN**

SHEET IDENTIFIER:  
**L202**



1 PLAZA ENLARGEMENT



LANDSCAPE ENLARGEMENT LEGEND

BOTANICAL NAME:	COMMON NAME:	SIZE:	TOTAL QTY:
<b>SHRUBS</b>			
CEANOTHUS VELUTINUS	SNOWBRUSH	5 GAL.	13
CERCOCARPUS MONTANUS	MOUNTAIN MAHOGANY	5 GAL.	2
ERICAMERIA NAUSEOSA	RUBBER RABBITBRUSH	5 GAL.	21
PHYSOCARPUS MALVACEUS	MALLOWLEAF NINEBARK	5 GAL.	18
SHEPHERDIA ARGENTEA	SILVER BUFFALOBERRY	5 GAL.	2

BOTANICAL NAME:	COMMON NAME:	SIZE:	TOTAL QTY:
<b>PERENNIALS</b>			
BALSAMORHIZA SAGITTATA	ARROWLEAF BALSAMROOT	1 GAL.	68
ARTEMESIA LUDOVICIANA	WHITE SAGEBRUSH	1 GAL.	19
LUPINUS ARGENTEUS	SILVER LUPINE	1 GAL.	15
<b>GRASSES</b>			
ACHATHERUM HYMENOIDES	INDIAN RYEGRASS	1 GAL.	192 12" O.C.
ELYMUS GLAUCUS	BLUE WILDRYE	1 GAL.	177 12" O.C.
LEYMUS CINEREUS	GREAT BASIN WILDRYE	1 GAL.	106 18" O.C.
PSEUDOROEGNERIA SPICATA	BLUEBUNCH WHEATGRASS	1 GAL.	38 24" O.C.

BOTANICAL NAME:	COMMON NAME:	QTY:
<b>TREES (GRAPHIC SCALE DIFFERS FROM PLANS)</b>		
ULMUS AMERICANA 'VALLEY FORGE'	VALLEY FORGE ELM	SEE L201
QUERCUS GAMBELII	GAMBEL OAK	SEE L201

PREPARED BY:  
**SALT LAKE CITY CORPORATION**  
 DEPARTMENT OF COMMUNITY AND NEIGHBORHOODS  
 ENGINEERING DIVISION  
 349 SOUTH 200 EAST, SUITE 100 EAST  
 LAKE CITY, UTAH 84143-0506  
 TELEPHONE: 801-455-1991  
 FAX: 801-455-6093  
 WWW.SLC.GOV/COM  
 PREPARER CONSULTANTS:



PROFESSIONAL SEAL:

PROJECT IDENTIFICATION:  
**FOOTHILLS TRAILHEAD IMPROVEMENTS**

100% SUBMITTAL

SALT LAKE CITY, UTAH

PROJECT OWNER:

**SALT LAKE CITY CORPORATION**

451 SOUTH STATE STREET  
 SALT LAKE CITY, UTAH 84111-2836  
 WWW.SLC.GOV/COM

DATE SUBMITTED:  
 MAY 5, 2023

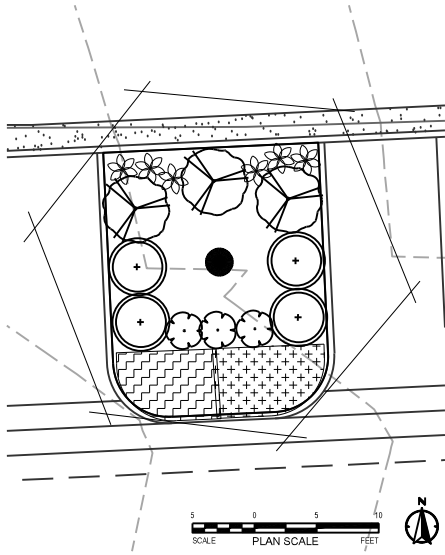
DATE	DESCRIPTION

PREPARER #: SLC CORP  
 CONTRACT #:  
 PROJECT #: PRJ-20027  
 JOB #:  
 DRAWING FILE: MMALFN  
 CHECKED BY: DFOSTER  
 COPYRIGHT:

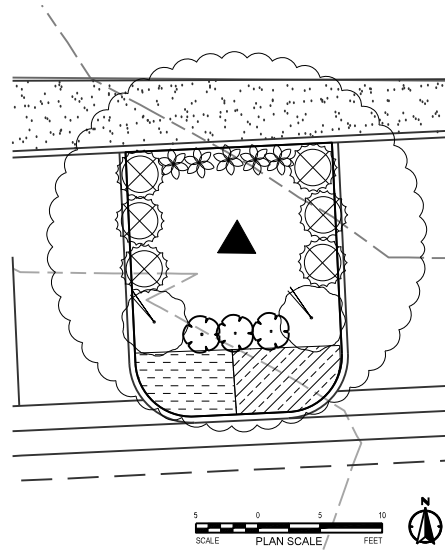
SHEET TITLE:  
**POPPERTON PARK LANDSCAPE ENLARGEMENT**

SHEET IDENTIFIER:

**L203**



1 TYPICAL PARKING ISLAND - A



2 TYPICAL PARKING ISLAND - B

LANDSCAPE ENLARGEMENT LEGEND

BOTANICAL NAME:	COMMON NAME:	SIZE:	TOTAL QTY:
<b>SHRUBS</b>			
CEANOTHUS VELUTINUS	SNOWBRUSH	5 GAL.	13
CERCOCARPUS MONTANUS	MOUNTAIN MAHOGANY	5 GAL.	2
ERICAMERIA NAUSEOSA	RUBBER RABBITBRUSH	5 GAL.	21
PHYSOCARPUS MALVACEUS	MALLOWLEAF NINEBARK	5 GAL.	18
SHEPHERDIA ARGENTEA	SILVER BUFFALOBERRY	5 GAL.	2

BOTANICAL NAME:	COMMON NAME:	SIZE:	TOTAL QTY:
<b>PERENNIALS</b>			
BALSAMORHIZA SAGITTATA	ARROWLEAF BALSAMROOT	1 GAL.	68
ARTEMESIA LUDOVICIANA	WHITE SAGEBRUSH	1 GAL.	19
LUPINUS ARGENTEUS	SILVER LUPINE	1 GAL.	15
<b>GRASSES</b>			
ACHNATHERUM HYMENOIDES	INDIAN RYEGRASS	1 GAL.	192 12" O.C.
ELYMUS GLAUCUS	BLUE WILDRYE	1 GAL.	177 12" O.C.
LEYMUS CINEREUS	GREAT BASIN WILDRYE	1 GAL.	106 18" O.C.
PSEUDOROEGNERIA SPICATA	BLUEBUNCH WHEATGRASS	1 GAL.	38 24" O.C.

BOTANICAL NAME:	COMMON NAME:	QTY:
<b>TREES (GRAPHIC SCALE DIFFERS FROM PLANS)</b>		
CELTIS OCCIDENTALIS	HACKBERRY	SEE L201
AMELANCHIER UTAHENSIS	UTAH SERVICEBERRY	SEE L201
ULMUS AMERICANA 'VALLEY FORGE'	VALLEY FORGE ELM	SEE L201

PREPARED BY:  
**SALT LAKE CITY CORPORATION**  
 DEPARTMENT OF COMMUNITY AND NEIGHBORHOODS  
 ENGINEERING DIVISION  
 349 SOUTH 200 EAST, SUITE 100 EAST  
 LAKE CITY, UTAH 84114-2006  
 TELEPHONE: 801-535-1991  
 FAX: 801-535-6093  
 WWW.SLC.GOV/COM  
 PREPARER CONSULTANTS:



PROJECT IDENTIFICATION:  
**FOOTHILLS TRAILHEAD IMPROVEMENTS**  
 100% SUBMITTAL  
 SALT LAKE CITY, UTAH  
 PROJECT OWNER:  
**SALT LAKE CITY CORPORATION**  
 451 SOUTH STATE STREET  
 SALT LAKE CITY, UTAH 84111-2836  
 WWW.SLC.GOV/COM  
 DATE SUBMITTED:  
 MAY 5, 2023

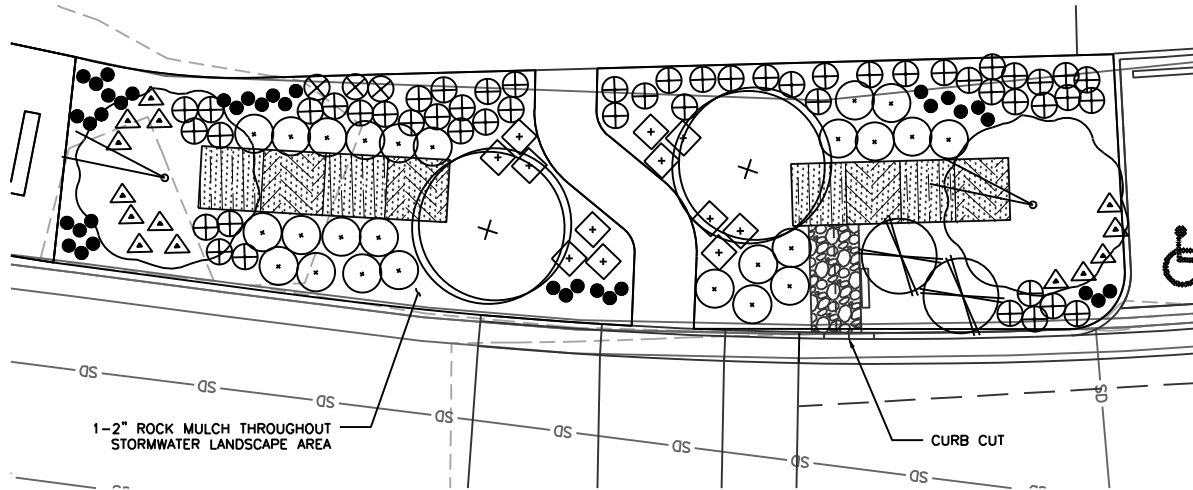
MARK	DATE	DESCRIPTION

PREPARER #: SLC CORP  
 CONTRACT #:  
 PROJECT #: PRK20027  
 JOB #:  
 DRAWING FILE:  
 DRAWN BY: MHALPIN  
 CHECKED BY: DFOSTER  
 COPYRIGHT:

SHEET TITLE:  
**POPPERTON PARK LANDSCAPE ENLARGEMENT**

SHEET IDENTIFIER:  
**L204**





1 STORMWATER ENLARGEMENT



**STORMWATER LEGEND**

BOTANICAL NAME:	COMMON NAME:	SIZE:	TOTAL QTY:
<b>GROUNDCOVER / SEED MIX</b>			
	FESTUCA SPP.	FINE FESCUE BLEND	4" POT 430, PLANTED 6" O.C.
	ELYMUS WAWAWIENSIS	SNAKE RIVER WHEATGRASS MIX	6" POT 39, PLANTED 20" O.C.
<b>ACCENT PLANTS / GRASSES</b>			
	BOUTELOUA GRACILIS	BLUE GRAMA	1 GAL. 37
	BOUTELOUA CURTIPENDULA	SIDEOATS GRAMA	1 GAL. 14
	PANICUM VIRGATUM	SWITCH GRASS	1 GAL. 12

**SMALL SHRUBS**

BOTANICAL NAME:	COMMON NAME:	SIZE:	TOTAL QTY:
	SYMPHORICARPUS ALPINA	ALPINE SNOWBERRY	1 GAL. 25
	RHUS TRILOBATA 'AUTUMN AMBER'	AUTUMN AMBER SUMAC	1 GAL. 3
	MAHONIA REPENS	CREeping OREGON GRAPE	1 GAL. 55

**TREES**

BOTANICAL NAME:	COMMON NAME:	SIZE:	TOTAL QTY:
	QUERCUS BICOLOR	SWAMP WHITE OAK	2" CAL. 2
	AMELANCHER GRANDIFLORA	AUTUMN BRILLIANCE SERVICEBERRY	2" CAL. 2

PREPARED BY:  
**SALT LAKE CITY CORPORATION**  
 DEPARTMENT OF COMMUNITY AND NEIGHBORHOODS  
 ENGINEERING DIVISION  
 349 SOUTH 200 EAST, SUITE 100 EAST  
 LAKE CITY, UTAH 84114-2006  
 TELEPHONE: 801-535-1991  
 FAX: 801-535-6093  
 WWW.SLC.GOV/COM  
 PREPARER CONSULTANTS:



PROFESSIONAL SEAL:

PROJECT IDENTIFICATION:

**FOOTHILLS TRAILHEAD IMPROVEMENTS**

100% SUBMITTAL

**SALT LAKE CITY, UTAH**

PROJECT OWNER:

**SALT LAKE CITY CORPORATION**

451 SOUTH STATE STREET  
 SALT LAKE CITY, UTAH 84111-2836  
 WWW.SLC.GOV/COM

DATE SUBMITTED:  
 MAY 5, 2023

MARK	DATE	DESCRIPTION

PREPARER #: SLC CORP  
 CONTRACT #:  
 PROJECT #: PRK20027  
 JOB #:  
 DRAWING FILE: MHALPIN  
 CHECKED BY: DFOSTER  
 COPYRIGHT:

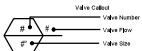
SHEET TITLE:  
**POPERTON PARK STORMWATER ENLARGEMENT**

SHEET IDENTIFIER:

**L205**

## IRRIGATION SCHEDULE

SYMBOL	MANUFACTURER/MODEL/DESCRIPTION	QTY	DETAIL
○	Rain Bird RWS-8-C-P 1401 Root Watering System with 4.0in. diameter x 36.0in. long with locking grate, semi-rigid mesh tube, Check Valve and Rain Grate. Rain Bird bubbler option as indicated: 1401 0.25 GPM, 1402 0.5 GPM, 1404 1.0 GPM, 1408 2.0 GPM.	42	4/D105
■	Rain Bird XCZ-100-PRB-COM 1" Wide Flow Drip Control Kit for Commercial Applications, 1in. Ball Valve with 1in. PESB Valve and 1in. Pressure Regulating Oppsi Quick-Check Basket Filter, 0.3 GPM-20 GPM	9	1/D105
⊕	Flush Valve	11	2/D105
⊕	Drip Air Relief Valve	8	2/D105
	Area to Receive Dripline Netafim TLCV-09-12 Techline Pressure Compensating Landscape Dripline with Check Valve, 0.9 GPH emitters at 12" O.C., Dripline laterals spaced at 12"-18" apart, with emitters offset for triangular pattern, 17mm.	5,980 Lf.	2/D105
SYMBOL	MANUFACTURER/MODEL/DESCRIPTION	QTY	DETAIL
■	Rain Bird 44-LRC 1" 1in. Brass Quick-Coupling Valve, with Corrosion-Resistant Stainless Steel Spring, Thermoplastic Rubber Cover, and 2-Piece Body.	8	3/D105
□	Hydro Point WeatherTrak LC+ 125ta, High-Impact Plastic NEIMA SR rated, key-lock entry, wall mount enclosure. Includes metal mounting plate with built-in bubble level.	1	1/D106
VB	VBSTD Valve Box VBSTD Professional Standard Valve Box 12" H Black with Drop-in Locking Green Lid	5	
WM	Water Meter 2" Existing Water Meter POC with controller, Stop and Waste valve located further down Popperton Pkwy.	1	
—	Irrigation Lateral Line: PVC Schedule 40-NP 1/2"	840,91 Lf.	
—	Irrigation Lateral Line: PVC Schedule 40-NP 3/4"	397,8 Lf.	
—	Irrigation Lateral Line: PVC Schedule 40-NP 1"	25,7 Lf.	
—	Irrigation Lateral Line: PVC Schedule 40-NP 1 1/4"	161,4 Lf.	
—	Irrigation Mainline: PVC Schedule 40-NP 1 1/4"	984,7 Lf.	
---	Pipe Sleeve: PVC Class 200 SDR 21	90,8 Lf.	5/D105



## VALVE SCHEDULE

NUMBER	MODEL	SIZE	TYPE	GPM	WIRE	PSI	PSI @ POC	PRECIP
1	Rain Bird XCZ-100-PRB-COM	1"	Area for Dripline	13.2	516,8	33,3	38,3	1,74 in/h
2	Rain Bird XCZ-100-PRB-COM	1"	Area for Dripline	19,88	313,0	47,7	63,2	1,74 in/h
3	Rain Bird XCZ-100-PRB-COM	1"	RWS Bubbler	6	305,1	51,4	63,5	0,98 in/h
4	Rain Bird XCZ-100-PRB-COM	1"	Area for Dripline	15,72	102,1	37,0	50,8	1,9 in/h
5	Rain Bird XCZ-100-PRB-COM	1"	RWS Bubbler	3	80,4	32,6	33,7	0,95 in/h
6	Rain Bird XCZ-100-PRB-COM	1"	Area for Dripline	14,07	178,9	32,2	46,9	1,93 in/h
7	Rain Bird XCZ-100-PRB-COM	1"	RWS Bubbler	1,5	195,5	32,1	32,7	1,05 in/h
8	Rain Bird XCZ-100-PRB-COM	1"	Area for Dripline	13,17	193,8	31,4	43,8	1,68 in/h
9	Rain Bird XCZ-100-PRB-COM	1"	Area for Dripline	13,67	198,8	32,4	45,8	1,7 in/h
	Common Wire				984,7			

## IRRIGATION NOTES

- THE CONTRACTOR SHALL REVIEW RELATED DRAWINGS AND SHALL ENSURE COORDINATION WITH ALL APPLICABLE TRADES PRIOR TO SUBMITTING BID.
- THE IRRIGATION SYSTEM SHALL BE INSTALLED IN CONFORMANCE WITH ALL APPLICABLE STATE AND LOCAL CODES AND ORDINANCES BY LICENSED CONTRACTORS AND EXPERIENCED WORKERS. CONTRACTOR SHALL OBTAIN AND PAY FOR ALL REQUIRED PERMITS AND FEES RELATING TO THE WORK.
- THIS DESIGN IS DIAGNOSTIC. ALL PIPING, VALVES, ETC. SHOWN WITHIN PAVED AREAS IS FOR DESIGN CLARIFICATION ONLY AND SHALL BE INSTALLED IN PLANTING AREAS A MINIMUM OF 18" FROM ADJACENT HARDSCAPE. AVOID ANY CONFLICTS BETWEEN THE IRRIGATION SYSTEM, PLANTING AND ARCHITECTURAL FEATURES. PARALLEL PIPES MAY BE INSTALLED IN COMMON TRENCH. PIPES ARE NOT TO BE INSTALLED DIRECTLY ABOVE ONE ANOTHER.
- DO NOT WILLFULLY INSTALL THE IRRIGATION SYSTEM AS SHOWN ON THE DRAWINGS WHEN IT IS OBVIOUS IN THE FIELD THAT OBSTRUCTIONS, GRADE DIFFERENCES OR DIFFERENCES IN THE AREA DIMENSIONS EXIST THAT MIGHT NOT HAVE BEEN CONSIDERED IN THE ENGINEERING. SUCH OBSTRUCTIONS OR DIFFERENCES SHOULD BE BROUGHT TO THE ATTENTION OF THE CITY'S AUTHORIZED REPRESENTATIVE. IN THE EVENT THAT THIS NOTIFICATION IS NOT PERFORMED, THE IRRIGATION CONTRACTOR SHALL ASSUME FULL RESPONSIBILITY FOR ANY REVISIONS NECESSARY.
- IT IS THE RESPONSIBILITY OF THE IRRIGATION CONTRACTOR TO BE FAMILIAR WITH ALL GRADE DIFFERENCES, LOCATION OF WALLS, RETAINING WALLS, ETC. THEY SHALL COORDINATE THEIR WORK WITH THE GENERAL CONTRACTOR AND OTHER SUBCONTRACTORS FOR THE LOCATION AND THE INSTALLATION OF PIPE SLEEVES THROUGH WALLS, UNDER ROADWAYS, PAVING, STRUCTURES, ETC. CONTRACTOR TO VERIFY THE LOCATION OF EXISTING UNDERGROUND UTILITIES AND STRUCTURES PRIOR TO THE EXCAVATION OF TRENCHES. CONTRACTOR IS TO REPAIR ANY DAMAGE CAUSED BY THE WORK AT NO ADDITIONAL COST TO THE OWNER.
- DUE TO THE SCALE OF THE DRAWINGS, IT IS NOT POSSIBLE TO INDICATE ALL OFFSETS, FITTINGS, SLEEVES, ETC., WHICH MAY BE REQUIRED. THE CONTRACTOR SHALL CAREFULLY INVESTIGATE THE STRUCTURAL AND FINISHED CONDITIONS AFFECTING ALL OF THE WORK AND PLAN THE WORK ACCORDINGLY. FURNISHING SUCH FITTINGS, ETC., AS MAY BE REQUIRED TO MEET SUCH CONDITIONS. DRAWINGS ARE GENERALLY DIAGNOSTIC AND INDICATIVE OF THE WORK TO BE INSTALLED. THE WORK SHALL BE INSTALLED IN SUCH A MANNER AS TO AVOID CONFLICTS BETWEEN IRRIGATION SYSTEMS, PLANTING, AND ARCHITECTURAL FEATURES.
- IRRIGATION CONTROL WIRE SHALL BE #12 U.L. APPROVED FOR DIRECT BURIAL. COMMON WIRE SHALL BE #12 U.L. APPROVED AND SHALL BE WHITE IN COLOR. WIRING TO INDIVIDUAL REMOTE CONTROL VALVES SHALL BE COLOR OTHER THAN WHITE.
- EACH CONTROLLER SHALL HAVE ITS OWN INDEPENDENT GROUND WIRE.
- REMOTE CONTROL VALVES SHALL BE WIRED TO CONTROLLER IN SEQUENCE AS SHOWN ON PLANS. RUN WIRE FROM EACH RCV TO THE CONTROLLER. SPLICING WIRES TOGETHER OUTSIDE OF VALVE BOXES WILL NOT BE PERMITTED.
- SPLICING OF 24-VOLT WIRES WILL NOT BE PERMITTED EXCEPT IN VALVE BOXES. LEAVE A 36" COIL OF EXCESS WIRE AT EACH SPLICE AND 100 FEET ON CENTER ALONG WIRE RUN. TAPE WIRE IN BUNDLES 10 FEET ON CENTER. NO TAPING PERMITTED INSIDE SLEEVES.
- INSTALL ONE (1) SPARE CONTROL WIRE FOR EVERY 6 (SIX) STATIONS ON THE CONTROLLER ALONG THE ENTIRE MAIN LINE. SPARE WIRES SHALL BE THE SAME COLOR (ONE WITH A WHITE STRIPE) AND OF A DIFFERENT COLOR THAN OTHER CONTROL WIRES. LOOP 36" EXCESS WIRE INTO EACH SINGLE VALVE BOX AND INTO ONE VALVE BOX IN EACH GROUP OF VALVES.
- INSTALL VALVE BOXES MINIMUM 12" FROM AND PERPENDICULAR TO WALK, CURB, OR LANDSCAPE FEATURE. AT MULTIPLE VALVE BOX GROUPS, EACH BOX SHALL BE AN EQUAL DISTANCE FROM THE WALK, CURB, ETC. AND EACH BOX SHALL BE MINIMUM 12" APART. SHORT SIDE OF VALVE BOXES SHALL BE PARALLEL TO WALK, CURB, ETC.
- REMOTE CONTROL VALVES AND ISOLATION VALVE LOCATIONS ON THIS DRAWING ARE APPROXIMATE. THE CONTRACTOR SHALL STAKE OUT EACH REMOTE CONTROL VALVE AND ISOLATION VALVE LOCATION FOR REVIEW AND APPROVAL BY THE CITY INSPECTOR PRIOR TO INSTALLATION OF ALL VALVES. FINAL LOCATION AND EXACT POSITIONING FOR REMOTE CONTROL VALVES AND ISOLATION VALVES SHALL BE DETERMINED BY THE CITY INSPECTOR. MINOR MODIFICATIONS OF VALVE LOCATIONS AS REQUESTED BY THE COUNTY INSPECTOR SHALL BE PROVIDED BY THE CONTRACTOR AT NO ADDITIONAL COST TO THE CITY.
- LOCATE QUICK COUPLING VALVE 12" FROM HARDSCAPE AREA.
- ALL MAIN LINES SHALL BE FLUSHED PRIOR TO THE INSTALLATION OF IRRIGATION HEADS. AT 30 DAYS AFTER INSTALLATION EACH SYSTEM SHALL BE FLUSHED TO ELIMINATE GLUE AND DIRT PARTICLES FROM THE LINES.
- NOTIFY CITY INSPECTOR OF ANY ASPECTS OF LAYOUT THAT WILL PROVIDE INCOMPLETE OR INSUFFICIENT WATER COVERAGE OF PLANT MATERIAL AND DO NOT PROCEED UNTIL INSTRUCTIONS ARE OBTAINED. REPAIR ALL EXISTING MATERIALS DAMAGED DURING CONSTRUCTION.
- IN ADDITION TO THE SLEEVES AND CONDUITS SHOWN ON THE DRAWINGS, THE IRRIGATION CONTRACTOR SHALL BE RESPONSIBLE FOR COORDINATING THE INSTALLATION OF SLEEVES AND CONDUITS OF SUFFICIENT SIZE UNDER ALL PAVED AREAS.
- SLEEVES SHALL BE MINIMUM 2X DIAMETER OF PIPE SLEEVES. ALL CONTROL WIRE SHALL BE INSTALLED IN A SEPARATE 2-INCH CONDUIT UNDER PAVING. SLEEVING SHALL EXTEND MINIMUM 12" BEYOND PAVING.
- ALL EXCAVATIONS ARE TO BE FILLED WITH COMPACTED BACKFILL. CONTRACTOR TO REPAIR ALL SETTLED TRENCHES PROMPTLY FOR A PERIOD OF 1 YEAR AFTER COMPLETION OF WORK. ADDITIONALLY, CONTRACTOR SHALL WARRANT THAT THE IRRIGATION SYSTEM WILL BE FREE FROM DEFECTS IN MATERIALS AND WORKMANSHIP FOR A PERIOD OF 1 YEAR AFTER FINAL ACCEPTANCE OF WORK.
- THE IRRIGATION SYSTEM DESIGN IS BASED ON THE MINIMUM OPERATING PRESSURE SHOWN ON THE IRRIGATION DRAWINGS. THE IRRIGATION CONTRACTOR SHALL VERIFY WATER PRESSURE PRIOR TO CONSTRUCTION. REPORT ANY DIFFERENCE BETWEEN THE WATER PRESSURE INDICATED ON THE DRAWINGS AND THE ACTUAL PRESSURE READING AT THE IRRIGATION POINT OF CONNECTION TO THE CITY'S AUTHORIZED REPRESENTATIVE.
- OPERATE IRRIGATION CONTROLLER(S) BETWEEN THE HOURS OF 10:00 PM AND 7:00 AM.
- IRRIGATION CONTRACTOR SHALL PROVIDE AND PAY FOR INSPECTION AND TESTING OF BACKFLOW PREVENTION DEVICE. INSPECTION SHALL BE PERFORMED BY AN INSPECTOR CERTIFIED BY SALT LAKE COUNTY.
- THE CONTRACTOR SHALL NOTIFY UNDERGROUND SERVICE ALERT AT 811 AT LEAST 48 HOURS PRIOR TO ANY EXCAVATION.
- EXISTING CONNECTION TO WATER METER, BACKFLOW PREVENTER, ETC TO BE KEPT IN PLACE AND USED.

PREPARED BY:  
**SALT LAKE CITY CORPORATION**  
 DEPARTMENT OF COMMUNITY AND NEIGHBORHOODS  
**ENGINEERING DIVISION**  
 349 SOUTH 700 EAST, SUITE 100 SALT LAKE CITY, UTAH 84143-2006  
 TELEPHONE: 801-535-2991  
 FAX: 801-535-6093  
 WWW.SLC.GOV.COM  
 PREPARED CONSULTANTS:



PROFESSIONAL SEAL:

PROJECT IDENTIFICATION:  
**FOOTHILLS TRAILHEAD IMPROVEMENTS**

**100% SUBMITTAL**

**SALT LAKE CITY, UTAH**

PROJECT OWNER:  
**SALT LAKE CITY CORPORATION**

451 SOUTH STATE STREET  
 SALT LAKE CITY, UTAH 84111-2836  
 WWW.SLC.GOV.COM

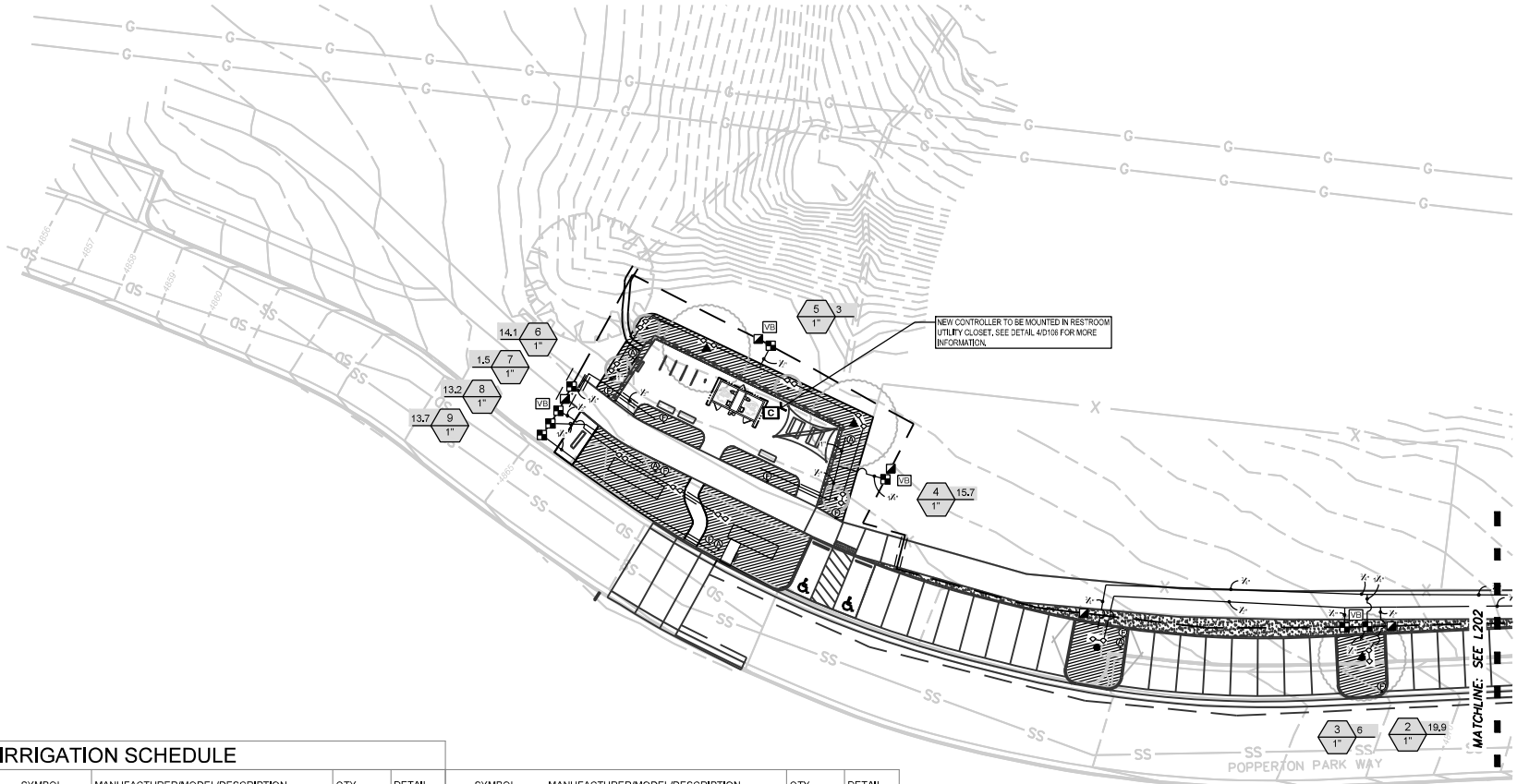
DATE SUBMITTED:  
 MAY 5, 2023

MARK	DATE	DESCRIPTION

PREPARED BY: SLC CORP  
 CONTRACT #:                        
 PROJECT #: PRK20027  
 JOB #:  
 DRAWING FILE:  
 DRAWING BY: MHALPN  
 CHECKED BY: DFOSTER  
 COPYRIGHT:

SHEET TITLE:  
**POPPERTON PARK IRRIGATION LEGEND**

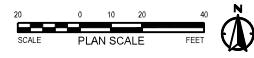
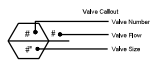
SHEET IDENTIFIER:  
**1200**



**IRRIGATION SCHEDULE**

SYMBOL	MANUFACTURER/MODEL/DESCRIPTION	QTY	DETAIL
◊	Rain Bird RWS-B-C-P 1401 Root Watering System with 4.0in. diameter x 36.0in. long with locking grate, semi-rigid mesh tube, Check Valve and Purple Grate, Rain Bird bubbler option as indicated: 1401 0.25 GPM, 1402 0.5 GPM, 1404 1.0 GPM, 1408 2.0 GPM.	24	4/D105
■	Rain Bird XCZ-100-PRE-COM 1" Wide Flow Drip Control Kit for Commercial Applications, 1in. Ball Valve with 1in. PESB Valve and 1in. Pressure Regulating 40psi Quick-Check Basket Filter, 0.3 GPM-20 GPM	8	1/D105
⊕	Flush Valve	9	2/D105
⊖	Drip Air Relief Valve	6	2/D105
[Hatched Box]	Area to Receive Dripline Netafim TLCV-09-12 TechLine Pressure Compensating Landscape Dripline with Check Valve, 0.9 GPH emitters at 12" O.C., Dripline laterals spaced at 12'-16" apart, with emitters offset for triangular pattern, 17mm.		2/D105

SYMBOL	MANUFACTURER/MODEL/DESCRIPTION	QTY	DETAIL
■	Rain Bird 44LRC 1" 1in. Brass Quick-Coupling Valve, with Corrosion-Resistant Stainless Steel Spring, Thermoplastic Rubber Cover, and 2-Piece Body.	5	3/D105
[C]	Hydro Point Hydro Point WeatherTrak LC-12Sta. High-Impact Plastic NEMA 3R rated, key-lock entry, wall mount enclosure. Includes metal mounting plate with built-in bubble level.	1	1/D105
□	VBSTD Valve Box VBSTD Professional Standard Valve Box 12" H Black with Drop-in Locking Green Lid	3	



PREPARED BY:  
**SALT LAKE CITY CORPORATION**  
 DEPARTMENT OF COMMUNITY AND NEIGHBORHOODS  
 ENGINEERING DIVISION  
 349 SOUTH 200 EAST, SUITE 100 SALT LAKE CITY, UTAH 84144-2006  
 TELEPHONE: 801-538-7991  
 FAX: 801-535-6093  
 WWW.SLC.GOV/COM  
 PREPARER CONSULTANTS:



PROFESSIONAL SEAL:

PROJECT IDENTIFICATION:  
**FOOTHILLS TRAILHEAD IMPROVEMENTS**

100% SUBMITTAL

**SALT LAKE CITY, UTAH**

PROJECT OWNER:

**SALT LAKE CITY CORPORATION**

451 SOUTH STATE STREET  
 SALT LAKE CITY, UTAH 84111-2636  
 WWW.SLC.GOV/COM

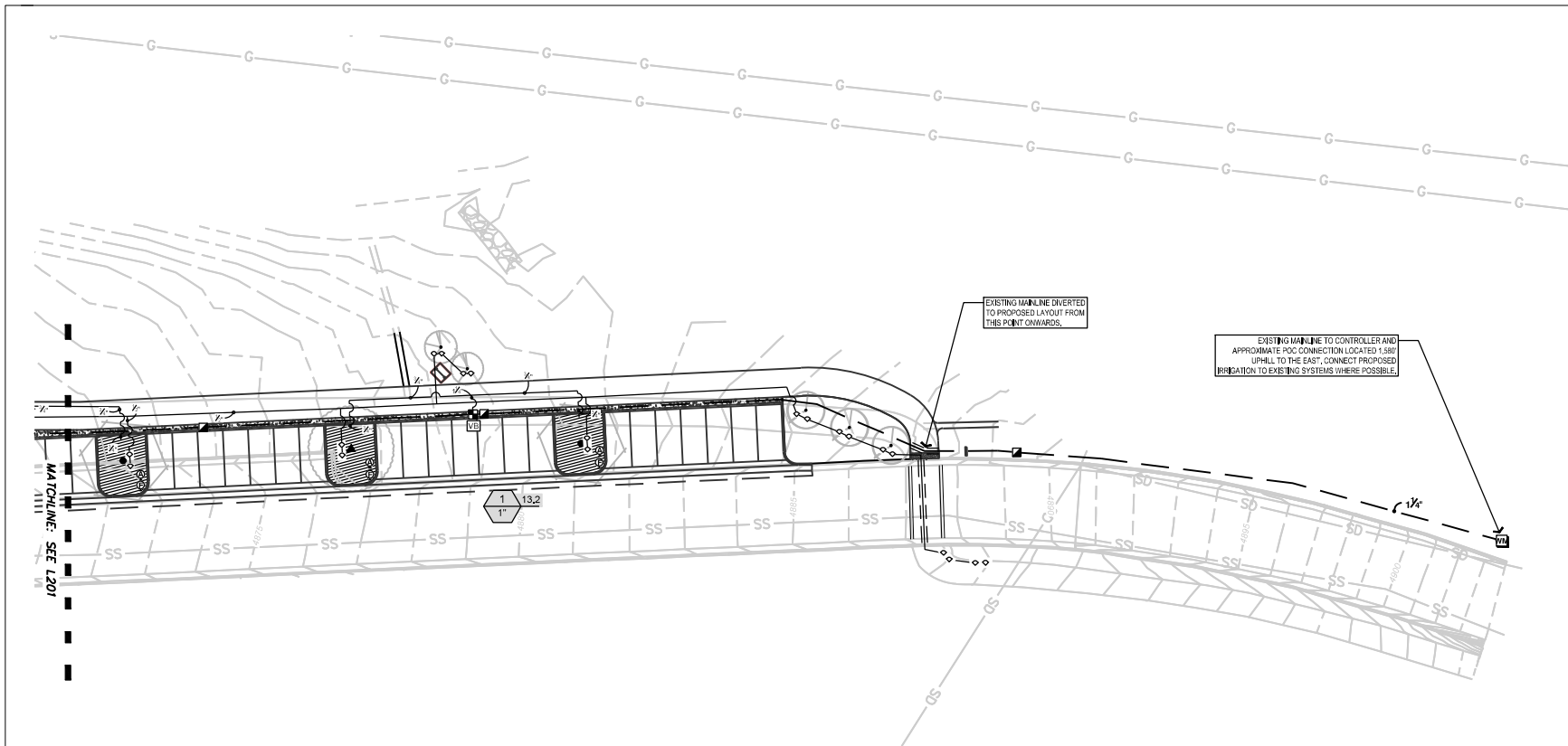
DATE SUBMITTED:  
 MAY 5, 2023

MARK	DATE	DESCRIPTION

PREPARER #: SLC CORP  
 CONTRACT #:  
 PROJECT #: PRK20027  
 JOB #:  
 DRAWING FILE:  
 DRAWN BY: MHALPN  
 CHECKED BY: DFOSTER  
 COPYRIGHT:

SHEET TITLE:  
**POPPERTON PARK IRRIGATION PLAN**

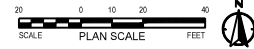
SHEET IDENTIFIER:  
**1201**



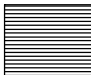
EXISTING MAINLINE DIVERTED TO PROPOSED LAYOUT FROM THIS POINT ONWARDS.

EXISTING MAINLINE TO CONTROLLER AND APPROXIMATE 90° CONNECTION LOCATED 1.581' UPHILL TO THE EAST, CONNECT PROPOSED IRRIGATION TO EXISTING SYSTEMS WHERE POSSIBLE.

MATCHLINE: SEE L201



**IRRIGATION SCHEDULE**

SYMBOL	MANUFACTURER/MODEL/DESCRIPTION	QTY	DETAIL
◊	Rain Bird RWS-B-C-P 1401 Root Watering System with 4.0in. diameter x 36.0in. long with locking grate, semi-rigid mesh tube, Check Valve and Purple Grate, Rain Bird bubbler option as indicated: 1401 0.25 GPM, 1402 0.5 GPM, 1404 1.0 GPM, 1408 2.0 GPM.	24	4/D105
SYMBOL	MANUFACTURER/MODEL/DESCRIPTION	QTY	DETAIL
■	Rain Bird XCZ-100-PRB-COM 1" Wide Flow Drip Control Kit for Commercial Applications, 1in. Ball Valve with 1in. PESB Valve and 1in. Pressure Regulating 40psi Quick-Check Basket Filter, 0.3 GPM-20 GPM	1	1/D105
⊙	Flush Valve	2	2/D105
⊙	Drip Air Relief Valve	2	2/D105
	Area to Receive Dripline Netafim TLCV-09-12 Techline Pressure Compensating Landscape Dripline with Check Valve, 0.9 GPH emitters at 12" O.C. Dripline laterals spaced at 12'-16" apart, with emitters offset for triangular pattern, 17mm.		2/D105

SYMBOL	MANUFACTURER/MODEL/DESCRIPTION	QTY	DETAIL
■	Rain Bird 44-LRC 1" 1in. Brass Quick-Coupling Valve, with Corrosion-Resistant Stainless Steel Spring Thermoplastic Rubber Cover, and 2-Piece Body.	3	3/D105
□	VBSTD Valve Box VBSTD Professional Standard Valve Box 12" H Black with Drop-pin Locking Green Lid	1	4/D106



PREPARED BY:  
**SALT LAKE CITY CORPORATION**  
 DEPARTMENT OF COMMUNITY AND NEIGHBORHOODS  
 ENGINEERING DIVISION  
 349 SOUTH 200 EAST, SUITE 100 SALT LAKE CITY, UTAH 84114-2006  
 TELEPHONE: 801-535-3911  
 FAX: 801-535-6093  
 WWW.SLC.GOV/COM



PROFESSIONAL SEAL:

PROJECT IDENTIFICATION:  
**FOOTHILLS TRAILHEAD IMPROVEMENTS**

100% SUBMITTAL

SALT LAKE CITY, UTAH

PROJECT OWNER:  
**SALT LAKE CITY CORPORATION**

451 SOUTH STATE STREET  
 SALT LAKE CITY, UTAH 84111-2836  
 WWW.SLC.GOV/COM

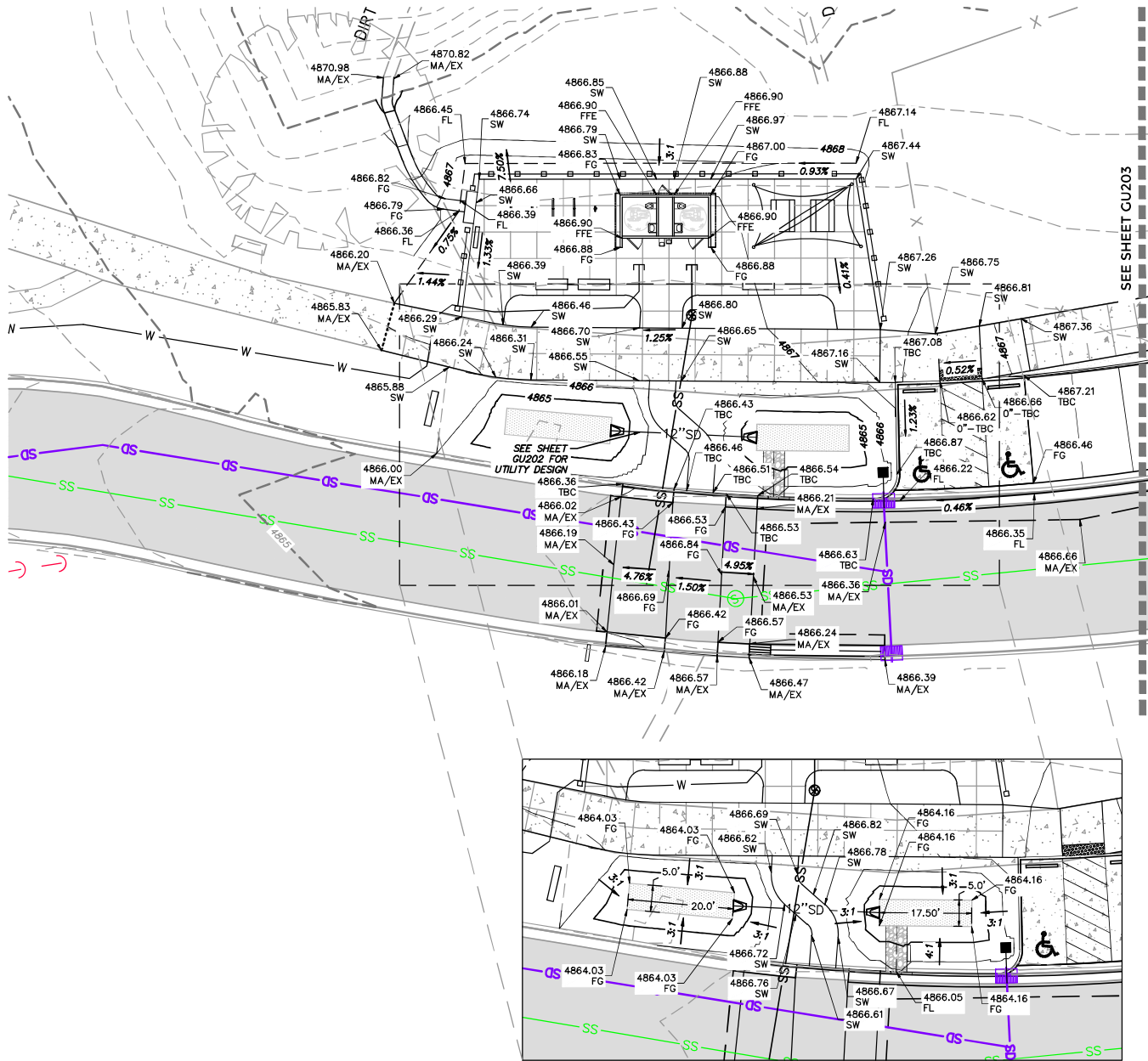
DATE SUBMITTED:  
 MAY 5, 2023

MARK	DATE	DESCRIPTION

PREPARED BY: SLC CORP  
 CONTRACT #:   
 PROJECT #: PRK20027  
 JOB #:  
 DRAWING FILE: MHALPN  
 CHECKED BY: DFOSTER  
 COPYRIGHT:

SHEET TITLE:  
**POPPERTON PARK IRRIGATION PLAN**

SHEET IDENTIFIER:  
**1202**



**GENERAL NOTES:**

ALL WORK TO COMPLY WITH APWA AND SALT LAKE CITY STANDARDS AND SPECIFICATIONS.

PROTECT/PRESERVE ALL EXISTING UTILITIES UNLESS OTHERWISE NOTED.

CONSTRUCTION CANNOT BEGIN UNTIL SWPPP IS APPROVED AND PRE-CONSTRUCTION MEETING IS HELD.

**ABBREVIATIONS:**

AC	ASPHALT CONCRETE
CS	CONCRETE SLAB
EX	EXISTING
FG	FINISHED GRADE
FL	FLOWLINE
LG	LIP OF GUTTER
MA	MATCH
SA	SIDEWALK
TBC	TOP BACK OF CURB
TG	TOP OF GRATE

NOTE: MAY CONTAIN ABBREVIATIONS THAT ARE NOT USED IN THIS PLAN SET.  
NOTE: CONTRACTOR TO POT HOLE TOP OF CULVERT AND NOTIFY ENGINEER IF HIGHER THAN INDICATED ON PLANS

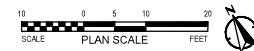
**LEGEND:**

—	PROPOSED DRAINAGE FLOWLINE (DETAIL H / SHEET G106)
—XXXX.0—	PROPOSED CONTOUR (MAJOR)
—XXXX.5—	PROPOSED CONTOUR (MINOR)
—XXXX.0—	EXISTING CONTOUR (MAJOR)
—XXXX.5—	EXISTING CONTOUR (MINOR)

**SCOPE OF WORK:**

PROVIDE, INSTALL AND/OR CONSTRUCT THE FOLLOWING PER THE SPECIFICATIONS GIVEN OR REFERENCED, THE DETAILS NOTED, AND/OR AS SHOWN ON THE CONSTRUCTION DRAWINGS:

- (10) RAIN GARDEN. SEE DETAIL A/SHEET D107.
- (101) CURB CUT. SEE DETAIL B/SHEET D107.
- (102) REMOVE EXISTING CATCH BASIN.
- (103) PRECAST BOX PER APWA PLAN NO. 332 (2'x2'), D&L SUPPLY FU-3024 FRAME & GRATE.
- (104) CATCH BASIN PER APWA PLAN NO. 315.
- (105) 12" CONCRETE FLARED END SECTION PER APWA PLAN NO. 323
- (110) COPPER PIPE, 1" TYPE K
- (111) WATER METER, 1"
- (112) CONNECT TO EXISTING 8" WATERLINE
- (113) PVC PIPE, 4" SDR-35
- (114) CONNECT TO EXISTING 8" SEWER MAIN
- (115) NOT USED.
- (116) CLASS V R.C.P., 12"
- (117) CLASS V R.C.P. 15"



PREPARED BY:  
**SALT LAKE CITY CORPORATION**  
 DEPARTMENT OF COMMUNITY AND NEIGHBORHOODS  
 ENGINEERING DIVISION  
 340 SOUTH 300 EAST, SUITE 100, SALT LAKE CITY, UTAH 84144-5006  
 TELEPHONE 801-438-7901  
 FAX 801-531-6993  
 WWW.SLCOR.UTAH.GOV  
 PREPARED CONSULTANTS:  
  
 PROFESSIONAL SEAL

---

PROJECT IDENTIFICATION:  
**FOOTHILLS TRAILHEAD IMPROVEMENTS**  
 100% SUBMITTAL  
 SALT LAKE CITY, UTAH  
 PROJECT OWNER:  
**SALT LAKE CITY CORPORATION**  
 451 SOUTH STATE STREET  
 SALT LAKE CITY, UTAH 84111-2836  
 WWW.SLCOR.UTAH.GOV  
 DATE SUBMITTED:  
 MAY 5, 2023

---

MARK	DATE	DESCRIPTION

---

PREPARED BY:  
 CONTRACT #:  
 PROJECT #:  
 FILE #:  
 DRAWING FILE:  
 DRAWN BY: JBASCH  
 CHECKED BY: DEBOURQUE  
 COPYRIGHT:

---

SHEET TITLE:  
**POPPERON PARK GRADING & UTILITY PLAN**  
 SHEET IDENTIFIER:  
**GU201**





**GENERAL NOTES:**  
 ALL WORK TO COMPLY WITH APWA AND SALT LAKE CITY STANDARDS AND SPECIFICATIONS.  
 PROTECT/PRESERVE ALL EXISTING UTILITIES UNLESS OTHERWISE NOTED.  
 CONSTRUCTION CANNOT BEGIN UNTIL SWPPP IS APPROVED AND PRE-CONSTRUCTION MEETING IS HELD.

**ABBREVIATIONS:**

AC	ASPHALT CONCRETE
CS	CONCRETE SLAB
EX	EXISTING
FG	FINISHED GRADE
FL	FLOWLINE
LG	LIP OF GUTTER
MA	MATCH
SW	SIDEWALK
TBC	TOP BACK OF CURB
TG	TOP OF GRATE

NOTE: MAY CONTAIN ABBREVIATIONS THAT ARE NOT USED IN THIS PLAN SET.  
 NOTE: CONTRACTOR TO POT HOLE TOP OF CULVERT AND NOTIFY ENGINEER IF HIGHER THAN INDICATED ON PLANS

**LEGEND:**

—	PROPOSED DRAINAGE FLOWLINE (DETAIL H / SHEET G106)
—XXXX.0	PROPOSED CONTOUR (MAJOR)
—XXXX.5	PROPOSED CONTOUR (MINOR)
—XXXX.0	EXISTING CONTOUR (MAJOR)
—XXXX.5	EXISTING CONTOUR (MINOR)

**SCOPE OF WORK:**  
 PROVIDE, INSTALL AND/OR CONSTRUCT THE FOLLOWING PER THE SPECIFICATIONS GIVEN OR REFERENCED, THE DETAILS NOTED, AND/OR AS SHOWN ON THE CONSTRUCTION DRAWINGS:

- (10) RAIN GARDEN. SEE DETAIL A/SHEET D107.
- (101) CURB CUT. SEE DETAIL B/SHEET D107.
- (102) REMOVE EXISTING CATCH BASIN.
- (103) PRECAST BOX PER APWA PLAN NO. 332 (2'x2'), D&L SUPPLY FU-3024 FRAME & GRATE.
- (104) CATCH BASIN PER APWA PLAN NO. 315.
- (105) 12" CONCRETE FLARED END SECTION PER APWA PLAN NO. 323
- (110) COPPER PIPE, 1" TYPE K
- (111) WATER METER, 1"
- (112) CONNECT TO EXISTING 8" WATERLINE
- (113) PVC PIPE, 4" SDR-35
- (114) CONNECT TO EXISTING 8" SEWER MAIN
- (115) NOT USED.
- (116) CLASS V R.C.P., 12"
- (117) CLASS V R.C.P. 15"

PREPARED BY:  
**SALT LAKE CITY CORPORATION**  
 DEPARTMENT OF COMMUNITY AND NEIGHBORHOODS  
 ENGINEERING DIVISION  
 140 SOUTH 200 EAST, SUITE 100, SALT LAKE CITY, UTAH 84143-5506  
 TELEPHONE: 801-458-7901  
 FAX: 801-531-4993  
 WWW.SLCOR.UTAH.GOV  
 PREPARED BY CONSULTANTS:  
  
 PROFESSIONAL SEAL

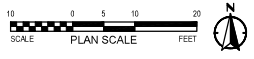
PROJECT IDENTIFICATION:  
**FOOTHILLS TRAILHEAD IMPROVEMENTS**  
 100% SUBMITTAL  
 SALT LAKE CITY, UTAH  
 PROJECT OWNER:  
**SALT LAKE CITY CORPORATION**  
 451 SOUTH STATE STREET  
 SALT LAKE CITY, UTAH 84111-2836  
 WWW.SLCOR.UTAH.GOV  
 DATE SUBMITTED:  
 MAY 5, 2023

MARK	DATE	DESCRIPTION

PREPARED BY:  
 CONTRACT #:  
 PROJECT # : PRK20027  
 FILE #:  
 DRAWING FILE:  
 DRAWN BY: JBASCH  
 CHECKED BY: DEBOURQUE  
 COPYRIGHT:

SHEET TITLE:  
**POPPERTON PARK GRADING & UTILITY PLAN**

SHEET IDENTIFIER:  
**GU203**





**GENERAL NOTES:**

ALL WORK TO COMPLY WITH APWA AND SALT LAKE CITY STANDARDS AND SPECIFICATIONS.

PROTECT/PRESERVE ALL EXISTING UTILITIES UNLESS OTHERWISE NOTED.

CONSTRUCTION CANNOT BEGIN UNTIL SWPPP IS APPROVED AND PRE-CONSTRUCTION MEETING IS HELD.

**ABBREVIATIONS:**

AC	ASPHALT CONCRETE
CS	CONCRETE SLAB
EX	EXISTING
FG	FINISHED GRADE
FL	FLOWLINE
LG	LIP OF GUTTER
MA	MATCH
SW	SIDEWALK
TBC	TOP BACK OF CURB
TG	TOP OF GRATE

NOTE: MAY CONTAIN ABBREVIATIONS THAT ARE NOT USED IN THIS PLAN SET.  
NOTE: CONTRACTOR TO POT HOLE TOP OF CULVERT AND NOTIFY ENGINEER IF HIGHER THAN INDICATED ON PLANS

**LEGEND:**

—	PROPOSED DRAINAGE FLOWLINE (DETAIL H / SHEET G106)
—XXXX.0—	PROPOSED CONTOUR (MAJOR)
—XXXX.5—	PROPOSED CONTOUR (MINOR)
—XXXX.0—	EXISTING CONTOUR (MAJOR)
—XXXX.5—	EXISTING CONTOUR (MINOR)

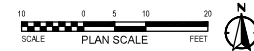
**SCOPE OF WORK:**

PROVIDE, INSTALL AND/OR CONSTRUCT THE FOLLOWING PER THE SPECIFICATIONS GIVEN OR REFERENCED, THE DETAILS NOTED, AND/OR AS SHOWN ON THE CONSTRUCTION DRAWINGS:

- (10) RAIN GARDEN. SEE DETAIL A/SHEET D107.
- (101) CURB CUT. SEE DETAIL B/SHEET D107.
- (102) REMOVE EXISTING CATCH BASIN.
- (103) PRECAST BOX PER APWA PLAN NO. 332 (2'x2'), D&L SUPPLY FU-3024 FRAME & GRATE.
- (104) CATCH BASIN PER APWA PLAN NO. 315.
- (105) 12" CONCRETE FLARED END SECTION PER APWA PLAN NO. 323
- (110) COPPER PIPE, 1" TYPE K
- (111) WATER METER, 1"
- (112) CONNECT TO EXISTING 8" WATERLINE
- (113) PVC PIPE, 4" SDR-35
- (114) CONNECT TO EXISTING 8" SEWER MAIN
- (115) NOT USED.
- (116) CLASS V R.C.P., 12"
- (117) CLASS V R.C.P., 15"

SEE SHEET GU203

SEE SHEET C203



PREPARED BY:  
**SALT LAKE CITY CORPORATION**  
 DEPARTMENT OF COMMUNITY AND NEIGHBORHOODS  
 ENGINEERING DIVISION  
 150 SOUTH 200 EAST SUITE 100 SALT LAKE CITY, UTAH 84143-5506  
 TELEPHONE 801-458-7901 FAX 801-531-6933  
 WWW.SLCORION.COM  
 PREPARED CONSULTANTS:  
  
 PROFESSIONAL SEAL

---

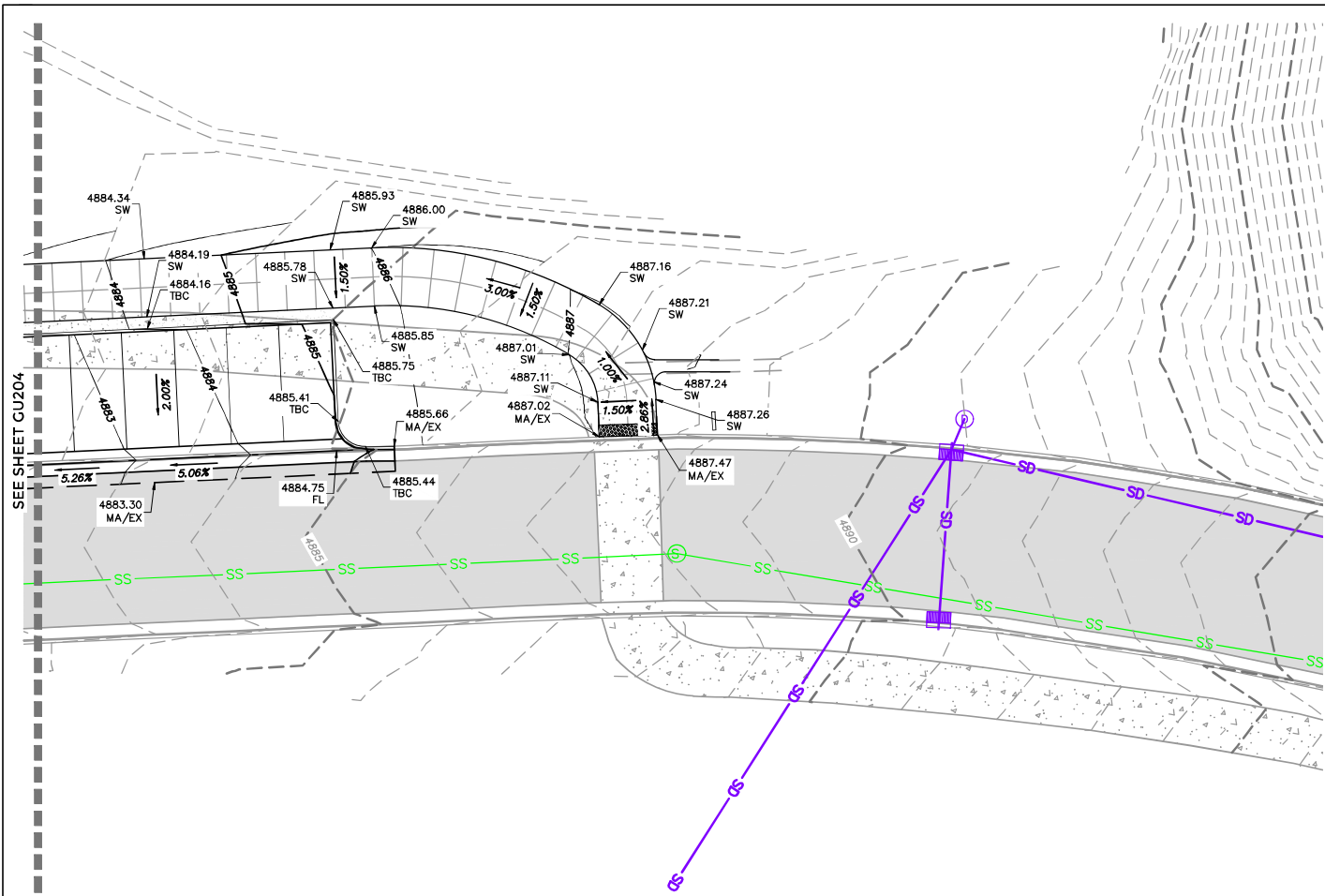
PROJECT IDENTIFICATION:  
**FOOTHILLS TRAILHEAD IMPROVEMENTS**  
 100% SUBMITTAL  
 SALT LAKE CITY, UTAH  
 PROJECT OWNER:  
**SALT LAKE CITY CORPORATION**  
 451 SOUTH STATE STREET SALT LAKE CITY, UTAH 84111-2836  
 WWW.SLCORION.COM  
 DATE SUBMITTED:  
 MAY 5, 2023

MARK	DATE	DESCRIPTION

PREPARED BY:  
 CONTRACT #:  
 PROJECT #: PRK20027  
 FILE #:  
 DRAWING FILE:  
 DRAWN BY: JBASCH  
 CHECKED BY: DEBOURQUE  
 COPYRIGHT:

SHEET TITLE:  
**POPPERTON PARK GRADING & UTILITY PLAN**  
 SHEET IDENTIFIER:  
**GU204**





SEE SHEET GU204

**GENERAL NOTES:**  
 ALL WORK TO COMPLY WITH APWA AND SALT LAKE CITY STANDARDS AND SPECIFICATIONS.  
 PROTECT/PRESERVE ALL EXISTING UTILITIES UNLESS OTHERWISE NOTED.  
 CONSTRUCTION CANNOT BEGIN UNTIL SWPPP IS APPROVED AND PRE-CONSTRUCTION MEETING IS HELD.

**ABBREVIATIONS:**

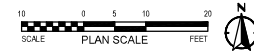
AC	ASPHALT CONCRETE
CS	CONCRETE SLAB
EX	EXISTING
FG	FINISHED GRADE
FL	FLOWLINE
LG	LIP OF GUTTER
MA	MATCH
SW	SIDEWALK
TBC	TOP BACK OF CURB
TG	TOP OF GRATE

NOTE: MAY CONTAIN ABBREVIATIONS THAT ARE NOT USED IN THIS PLAN SET.  
 NOTE: CONTRACTOR TO POT HOLE TOP OF CULVERT AND NOTIFY ENGINEER IF HIGHER THAN INDICATED ON PLANS

**LEGEND:**

—	PROPOSED DRAINAGE FLOWLINE (DETAIL H / SHEET G106)
—XXXX.0	PROPOSED CONTOUR (MAJOR)
—XXXX.5	PROPOSED CONTOUR (MINOR)
—XXXX.0	EXISTING CONTOUR (MAJOR)
—XXXX.5	EXISTING CONTOUR (MINOR)

- SCOPE OF WORK:**  
 PROVIDE, INSTALL AND/OR CONSTRUCT THE FOLLOWING PER THE SPECIFICATIONS GIVEN OR REFERENCED, THE DETAILS NOTED, AND/OR AS SHOWN ON THE CONSTRUCTION DRAWINGS:
- (10) RAIN GARDEN. SEE DETAIL A/SHEET D107.
  - (101) CURB CUT. SEE DETAIL B/SHEET D107.
  - (102) REMOVE EXISTING CATCH BASIN.
  - (103) PRECAST BOX PER APWA PLAN NO. 332 (2'x2'), D&L SUPPLY FU-3024 FRAME & GRATE.
  - (104) CATCH BASIN PER APWA PLAN NO. 315.
  - (105) 12" CONCRETE FLARED END SECTION PER APWA PLAN NO. 323
  - (110) COPPER PIPE, 1" TYPE K
  - (111) WATER METER, 1"
  - (112) CONNECT TO EXISTING 8" WATERLINE
  - (113) PVC PIPE, 4" SDR-35
  - (114) CONNECT TO EXISTING 8" SEWER MAIN
  - (115) NOT USED.
  - (116) CLASS V R.C.P., 12"
  - (117) CLASS V R.C.P., 15"



PREPARED BY:  
**SALT LAKE CITY CORPORATION**  
 DEPARTMENT OF COMMUNITY AND NEIGHBORHOODS  
 ENGINEERING DIVISION  
 340 SOUTH 300 EAST SUITE 100 SALT LAKE CITY, UTAH 84143-5506  
 TELEPHONE 801-458-7901  
 FAX 801-531-4993  
 WWW.SLCOR.UTAH.GOV  
 PREPARED CONSULTANTS:  
  
 PROFESSIONAL SEAL

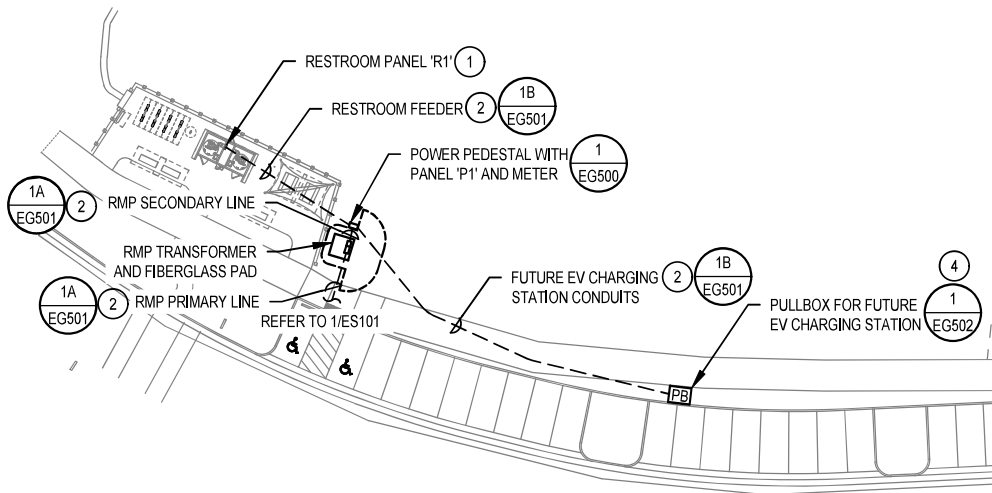
PROJECT IDENTIFICATION:  
**FOOTHILLS TRAILHEAD IMPROVEMENTS**  
 100% SUBMITTAL  
 SALT LAKE CITY, UTAH  
 PROJECT OWNER:  
**SALT LAKE CITY CORPORATION**  
 451 SOUTH STATE STREET  
 SALT LAKE CITY, UTAH 84111-2836  
 WWW.SLCOR.UTAH.GOV  
 DATE SUBMITTED:  
 MAY 5, 2023

MARK	DATE	DESCRIPTION

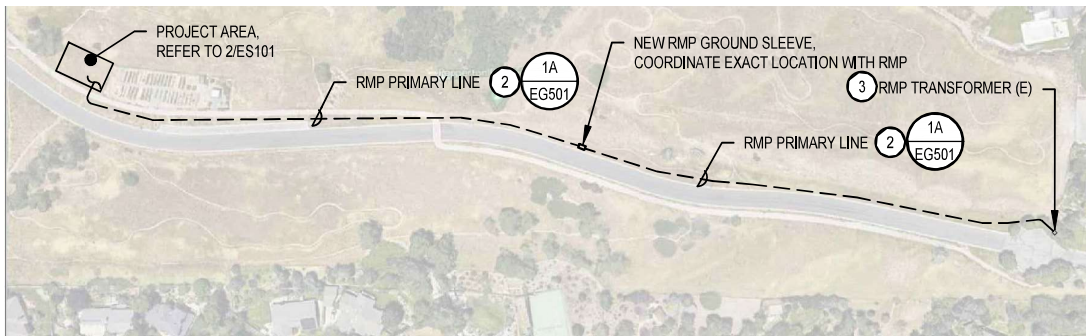
PREPARED BY:  
 CONTRACT #:  
 PROJECT # : PRK20027  
 FILE #:  
 DRAWING FILE:  
 DRAWN BY: JBASCH  
 CHECKED BY: DEBOURQUE  
 COPYRIGHT:

SHEET TITLE:  
**POPPERTON PARK GRADING & UTILITY PLAN**

SHEET IDENTIFIER:  
**GU205**



2 POPPERTON PARK - ENLARGED ELECTRICAL SITE PLAN  
SCALE: 1" = 40'-0"



1 POPPERTON PARK - OVERALL ELECTRICAL SITE PLAN  
SCALE: 1" = 200'-0"



**KEYED NOTES: #**

- COORDINATE EXACT LOCATION OF RESTROOM PANELBOARD WITH PRE-FAB RESTROOM INSTALLER PRIOR TO ROUGH-IN.
- REFER TO ONE-LINE DIAGRAM FOR MORE INFORMATION.
- DIV 26 CONTRACTOR SHALL EXTEND THE CONDUIT INTO EXISTING TRANSFORMER. TRENCHING NEAR THE TRANSFORMER SHALL BE DONE WITH CAUTION TO NOT DAMAGE THE EXISTING TRANSFORMER. ALL CONDUCTORS AND FINAL CONNECTIONS SHALL BE COMPLETED BY RMP. COORDINATE ALL WORK WITH RMP.
- PULLBOX SHALL BE INSTALLED IN THE LANDSCAPE AREA 12" AWAY FROM THE CURB. CENTER BETWEEN TWO PARKING STALLS AS SHOWN. COORDINATE EXACT LOCATION WITH OWNER.

**SITE GENERAL NOTES:**

- PROVIDE ALL REQUIRED BACKFILLING, ETC. FOR ALL CONDUITS, PROVIDE REQUIRED BACKFILL MATERIAL AS DIRECTED BY EACH UTILITY.
- COORDINATE ALL LOCATIONS AND ROUTING WORK IN THE FIELD.
- ROUTE CONDUITS A MINIMUM OF 2' BELOW THE BUILDING FLOOR SLAB.
- MINIMUM CONDUIT FOR SITE WORK SHALL BE 1".
- CONDUIT ROUTING SHOWN IS SCHEMATIC AND FOR CLARIFICATION COORDINATE LOCATION WITH ALL AFFECTED TRADES.
- PROVIDE A MINIMUM OF 12" SEPARATION BETWEEN POWER AND COMMUNICATION CONDUITS.
- ALL CONDUITS THAT EXTEND THROUGH CONCRETE SHALL BE GALVANIZED RIGID CONDUIT AND WRAPPED WITH TWO (2) LAYERS OF PVC TAPE.
- ALL ELBOWS THAT ARE UNDER THE FINISHED GRADE SHALL BE GALVANIZED RIGID CONDUIT AND WRAPPED WITH TWO (2) LAYERS OF PVC TAPE.

PREPARED BY:  
**SALT LAKE CITY CORPORATION**  
DEPARTMENT OF COMMUNITY AND NEIGHBORHOODS  
ENGINEERING DIVISION  
340 SOUTH 200 EAST, SUITE 100 SALT LAKE CITY, UTAH 84143-0506  
TELEPHONE: 801-458-7961  
FAX: 801-458-8883  
WWW.SLC.GOV



PROFESSIONAL SEAL:

PROJECT IDENTIFICATION:  
**FOOTHILLS TRAILHEAD IMPROVEMENTS**

100% SUBMITTAL

**SALT LAKE CITY, UTAH**

PROJECT OWNER:  
**SALT LAKE CITY CORPORATION**

401 SOUTH STATE STREET  
SALT LAKE CITY, UTAH 84111-3806  
WWW.SLC.GOV

DATE SUBMITTED:  
MAY 5, 2023

MARK	DATE	DESCRIPTION

PREPARED BY: MHALPIN  
CONTRACT #: 2021-247  
PROJECT #: 2021-247  
JOB #: PW-00027  
DRAWING FILE:  
DRAWN BY: YH  
CHECKED BY: AR  
COPYRIGHT:

SHEET TITLE:  
**POPPERTON ELECTRICAL SITE PLANS**

SHEET IDENTIFIER:  
**ES201**