

GENERAL NOTES:

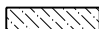
1. RETURN ALL REMOVED SIGNS TO SLC STREETS DIVISION.
2. PRESERVE AND PROTECT IMPROVEMENTS BEYOND LIMITS OF DISTURBANCE.
3. PRESERVE AND PROTECT EXISTING UTILITY LINES AND STRUCTURES.

1 LIMITS OF DISTURBANCE.

SCOPE OF WORK:

- 1 REMOVE GRAVEL PAVEMENT
- 2 PROTECT WATER MAINLINE
- 3 PROTECT STORM DRAIN
- 4 PROTECT MANHOLE
- 5 PROTECT EXISTING ACCESS GATES

LEGEND:

-  EXISTING LANDSCAPE DEMO
-  EXISTING GRAVEL DEMO



PREPARED BY:
SALT LAKE CITY CORPORATION
 DEPARTMENT OF COMMUNITY AND NEIGHBORHOODS
ENGINEERING DIVISION
 349 SOUTH 200 EAST, SUITE 100 SALT LAKE CITY, UTAH 84143-2006
 TELEPHONE: 801-535-7941
 FAX: 801-535-6093
 WWW.SLC.GOV/COM



PROJECT IDENTIFICATION:
FOOTHILLS TRAILHEAD IMPROVEMENTS

100% SUBMITTAL
SALT LAKE CITY, UTAH

PROJECT OWNER:
SALT LAKE CITY CORPORATION

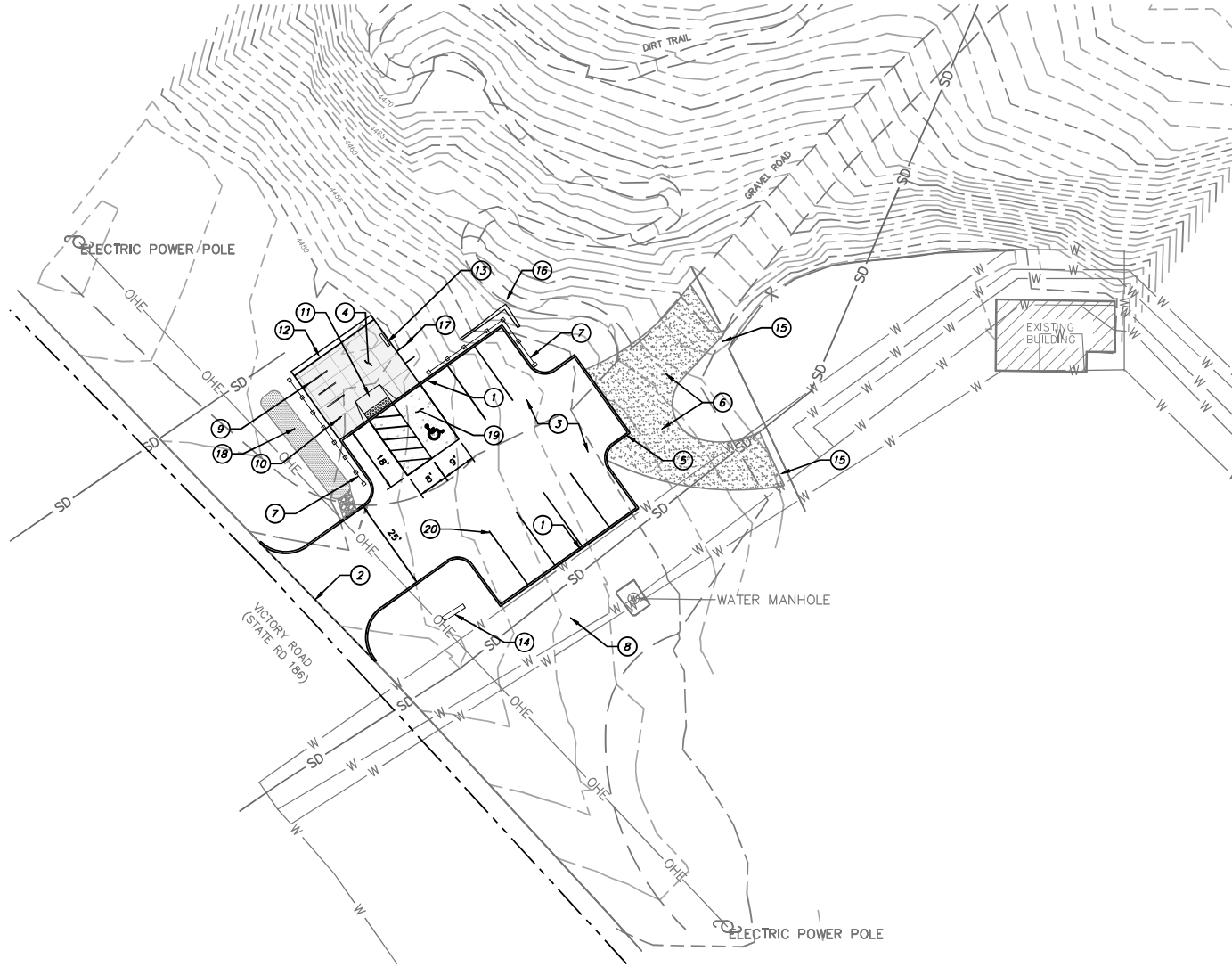
451 SOUTH STATE STREET
 SALT LAKE CITY, UTAH 84111-2836
 WWW.SLC.GOV/COM
 DATE SUBMITTED:
 MAY 5, 2023

MARK	DATE	DESCRIPTION

PREPARED BY: SLC CORP
 CONTRACT #:
 PROJECT #: PRK20027
 JOB #:
 DRAWING FILE:
 DRAWN BY: MHALPIN
 CHECKED BY: DFOSTER
 COPYRIGHT:

SHEET TITLE:
VICTORY ROAD DEMO PLAN

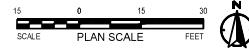
SHEET IDENTIFIER:
DM301



GENERAL NOTES:
 1. ALL WORK TO COMPLY WITH APWA AND SALT LAKE CITY STANDARDS AND SPECIFICATIONS.
 2. ALL IMPROVEMENTS MUST COMPLY WITH ADA STANDARDS.
 3. SEE GRADING PLANS FOR ADDITIONAL DESIGN INFORMATION.

SCOPE OF WORK:
 PROVIDE, INSTALL AND/OR CONSTRUCT THE FOLLOWING PER THE SPECIFICATIONS GIVEN OR REFERENCED, THE DETAILS NOTED, AND/OR AS SHOWN ON THE CONSTRUCTION DRAWINGS:

- ① CURB, TYPE P (DETAIL 4, SHEET D101)
- ② SAWCUT AND REPLACE ASPHALT PER UDOT STANDARDS
- ③ ASPHALT PAVEMENT, 3" THICK WITH 8" AGGREGATE BASE (DETAIL 1, SHEET D102)
- ④ COLORED PORTLAND CEMENT CONCRETE PAVEMENT (PCCP), 4" THICK WITH 4" BASE (DETAIL 1, SHEET D101)
- ⑤ CURB, TYPE P, FLUSH FOR SERVICE ACCESS, (DETAIL 4, SHEET D101)
- ⑥ APPROXIMATE EXTENTS OF GRAVEL AREA FOR SERVICE ACCESS
- ⑦ FENCING, TIMBER AND ROPE, 42" HEIGHT (DETAIL 3, SHEET D103)
- ⑧ LANDSCAPE AREA, SEE SHEET L301 FOR PLANT SCHEDULE AND IRRIGATION INFORMATION
- ⑨ BIKE RACK: DERO 'BIKE' BIKE RACK OR APPROVED EQUAL (DETAIL 1, SHEET D103)
- ⑩ BIKE REPAIR STATION: DERO 'FIXIT' OR APPROVED EQUAL (DETAIL 2, SHEET D103)
- ⑪ ADA RAMP WITH DETECTABLE WARNING SURFACE, TRUNCATED DOME PAVERS (DETAIL 3, SHEET D101)
- ⑫ SEAT WALL, CONCRETE, 18" TALL (DETAIL 4, SHEET D102)
- ⑬ TRAILHEAD INFORMATION KIOSK (BY OTHERS)
- ⑭ VEHICULAR ENTRANCE SIGN (DETAIL 6, SHEET D103)
- ⑮ PROTECT EXISTING SERVICE AREA GATES
- ⑯ RETAINING WALL, SEE CIVIL SHEETS
- ⑰ NATURAL SURFACE TRAIL CONNECTION (BY OTHERS)
- ⑱ STORMWATER TREATMENT AREA
- ⑲ CONCRETE PAVEMENT AT ADA LOADING ZONES AND PARKING SPACE
- ⑳ NEW STRIPING, TYP.



PREPARED BY:
SALT LAKE CITY CORPORATION
 DEPARTMENT OF COMMUNITY AND NEIGHBORHOODS
 ENGINEERING DIVISION
 349 SOUTH 200 EAST, SUITE 100 EAST
 SALT LAKE CITY, UTAH 84143-2006
 TELEPHONE: 801-458-7891
 FAX: 801-458-6093
 WWW.SLC.GOV/COW
 PREPARER CONSULTANTS:



PROFESSIONAL SEAL:

PROJECT IDENTIFICATION:

FOOTHILLS TRAILHEAD IMPROVEMENTS

100% SUBMITTAL

SALT LAKE CITY, UTAH

PROJECT OWNER:

SALT LAKE CITY CORPORATION

451 SOUTH STATE STREET
 SALT LAKE CITY, UTAH 84111-2836
 WWW.SLC.GOV/COW

DATE SUBMITTED:

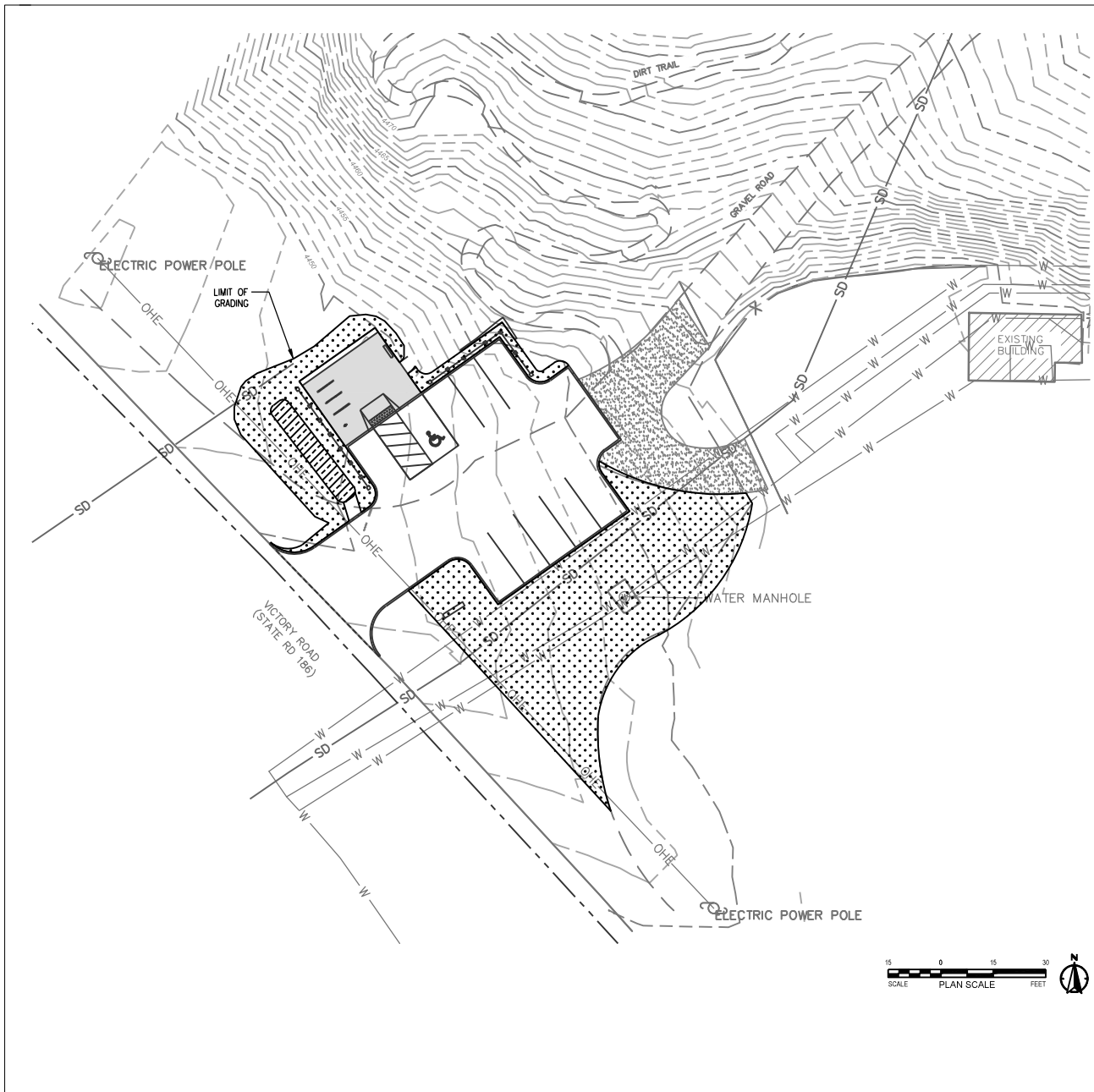
MAY 5, 2022

MARK	DATE	DESCRIPTION

PREPARER #:	SLC CORP
CONTRACT #:	
PROJECT #:	PRR-20027
JOB #:	
DRAWING FILE:	
DRAWN BY:	MMALFN
CHECKED BY:	DPROSTER
COPYRIGHT:	


SHEET TITLE:
VICTORY ROAD SITE PLAN

SHEET IDENTIFIER:
CP301



LANDSCAPE LEGEND

STORMWATER TREATMENT AREA

 1-2" ROCK MULCH

GREAT BASIN SEED: RANGE AND FOOTHILLS SEED MIX



PERCENT IN MIX	SPECIES	SCIENTIFIC NAME
41%	SANDBERG BLUEGRASS	POA SECUNDA SANDBERGII
31%	SLENDER WHEATGRASS	ELYMUS TRACHYCAULUS
9%	BOTTLEBRUSH SQUIRRELTAIL	ELYMUS ELYMOIDES
7%	BASIN WILDRIE	LEYMUS CINERUS
6%	CRESTED WHEATGRASS	AGROPYRON CRISTATUM
3%	BLUE FLAX	LINUM PERENNE
3%	WESTERN YARROW	WHITE YARROW

- NOTES:**
- SEED MIX PROVIDED BY GREAT BASIN SEED. DEFER TO ANY SPECIAL RECOMMENDATIONS PER SUPPLIER
 - SEEDS SHALL BE HYDROSEEDING AT A RATE OF 12 POUNDS PER ACRE.
 - ALL AREAS DISTURBED BY CONSTRUCTION SHALL BE RE-SEEDING

IRRIGATION NOTES:

- SEED MIX IRRIGATION SHALL BE PLANTED IN THE SPRING OR FALL AND HAND WATERED AS NEEDED FOR ESTABLISHMENT.

PREPARED BY:
SALT LAKE CITY CORPORATION
 DEPARTMENT OF COMMUNITY AND NEIGHBORHOODS
 ENGINEERING DIVISION
 340 SOUTH 200 EAST, SUITE 100 SALT LAKE CITY, UTAH 84114-2006
 TELEPHONE: 801-458-7001 FAX: 801-458-4083
 WWW.SLC.GOV

PREPARED CONSULTANTS:



 TALISMAN
 PROFESSIONAL SEAL:

PROJECT IDENTIFICATION:
FOOTHILLS TRAILHEAD IMPROVEMENTS

100% SUBMITTAL

SALT LAKE CITY, UTAH

PROJECT OWNER:
SALT LAKE CITY CORPORATION

451 SOUTH STATE STREET
 SALT LAKE CITY, UTAH 84111-2016
 WWW.SLC.GOV

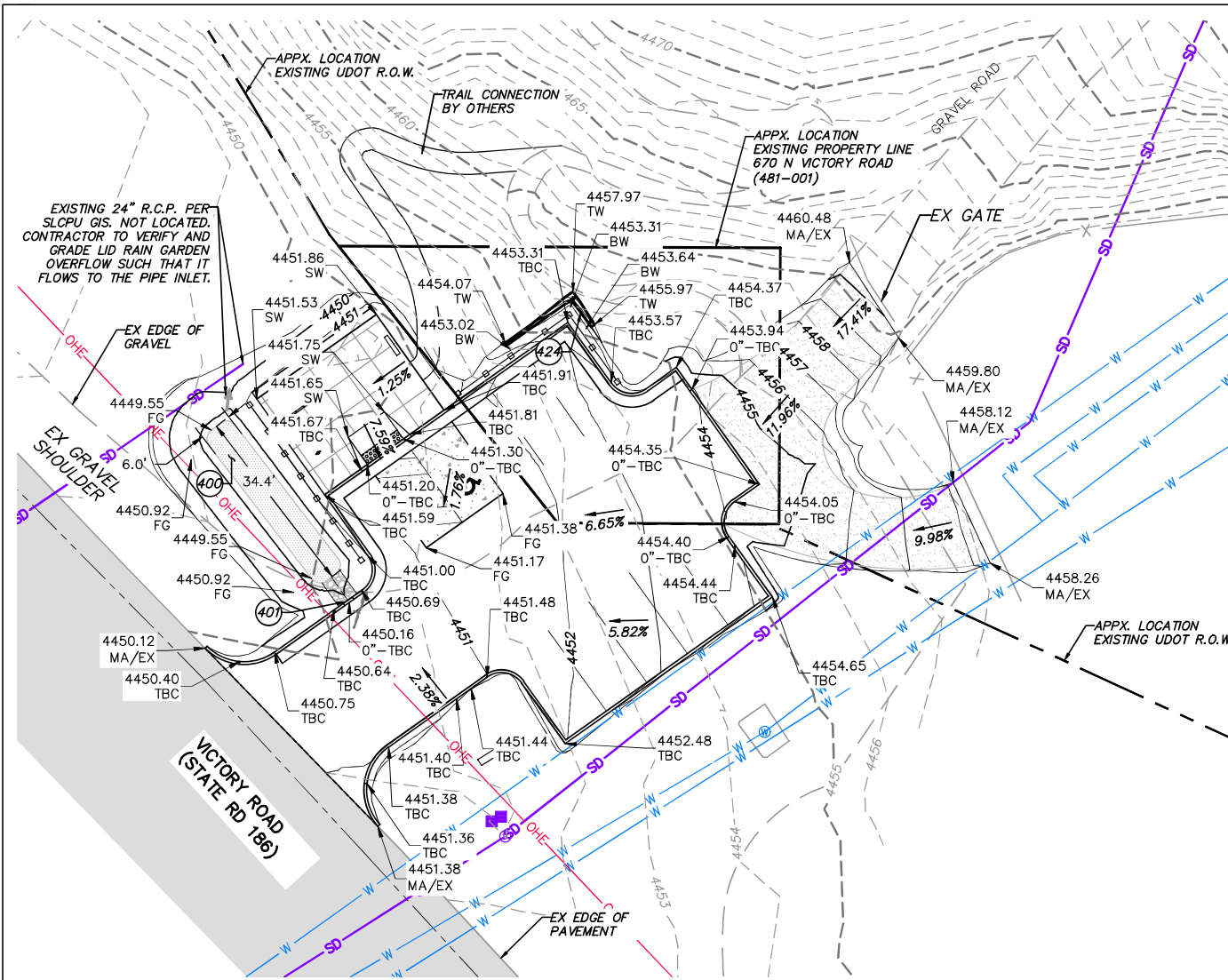
DATE SUBMITTED:
 MAY 5, 2023

WORK | DATE | DESCRIPTION

PREPARED BY: SLC CORP
 CONTRACT #:
 PROJECT #: PRJ-20227
 JOB #:
 DRAWING FILE:
 DRAWN BY: JH/ALP/PH
 CHECKED BY: DFOSTER
 COPYRIGHT:

SHEET TITLE:
VICTORY ROAD LANDSCAPE PLAN

SHEET IDENTIFIER:
L301



GENERAL NOTES:
 ALL WORK TO COMPLY WITH APIWA AND SALT LAKE CITY STANDARDS AND SPECIFICATIONS.
 PROTECT/PRESERVE ALL EXISTING UTILITIES UNLESS OTHERWISE NOTED.
 CONSTRUCTION CANNOT BEGIN UNTIL SWPPP IS APPROVED AND PRE-CONSTRUCTION MEETING IS HELD.

ABBREVIATIONS:

AC	ASPHALT CONCRETE
CS	CONCRETE SLAB
EX	EXISTING
FG	FINISHED GRADE
FL	FLOWLINE
LG	LIP OF GUTTER
MA	MATCH
SW	SIDEWALK
TBC	TOP BACK OF CURB
TG	TOP OF GRATE

NOTE: MAY CONTAIN ABBREVIATIONS THAT ARE NOT USED IN THIS PLAN SET.
 NOTE: CONTRACTOR TO POTHOLE TOP OF CULVERT AND NOTIFY ENGINEER IF HIGHER THAN INDICATED ON PLANS

LEGEND:

—	PROPOSED DRAINAGE FLOWLINE (DETAIL H/SHEET G106)
—XXXXX.0	PROPOSED CONTOUR (MAJOR)
—XXXX.5	PROPOSED CONTOUR (MINOR)
—XXXXX.0	EXISTING CONTOUR (MAJOR)
—XXXX.5	EXISTING CONTOUR (MINOR)

SCOPE OF WORK:
 PROVIDE, INSTALL AND/OR CONSTRUCT THE FOLLOWING PER THE SPECIFICATIONS GIVEN OR REFERENCED, THE DETAILS NOTED, AND/OR AS SHOWN ON THE CONSTRUCTION DRAWINGS:

- (40) RAIN GARDEN. SEE DETAIL A/SHEET D107.
- (41) CURB CUT. SEE DETAIL B/SHEET D107.
- (42) CONTRACTOR TO SUBMIT STAMPED DESIGN DRAWINGS FOR RETAINING WALLS

PREPARED BY:
SALT LAKE CITY CORPORATION
 DEPARTMENT OF COMMUNITY AND NEIGHBORHOODS
 ENGINEERING DIVISION
 340 SOUTH 300 EAST, SUITE 100, SALT LAKE CITY, UTAH 84143-5506
 TELEPHONE: 801-535-7901
 FAX: 801-535-4933
 WWW.SLCORV204
 PREPARER CONSULTANTS:

 TALISMAN
 PROFESSIONAL SEAL

PROJECT IDENTIFICATION:
FOOTHILLS TRAILHEAD IMPROVEMENTS
 100% SUBMITTAL
 SALT LAKE CITY, UTAH
 PROJECT OWNER:
SALT LAKE CITY CORPORATION
 451 SOUTH STATE STREET
 SALT LAKE CITY, UTAH 84111-2836
 WWW.SLCORV204
 DATE SUBMITTED:
 MAY 5, 2023

MARK	DATE	DESCRIPTION

PREPARER #:
 CONTRACT #:
 PROJECT # : PRK20027
 FILE #:
 DRAWING FILE:
 DRAWN BY: JBASCH
 CHECKED BY: DEBOURQUE
 COPYRIGHT:

SHEET TITLE:
VICTORY ROAD GRADING & UTILITY PLAN

SHEET IDENTIFIER:
GU301

