

BALLPARK

NEIGHBORHOOD PLAN

Bicycle Advisory Committee Meeting
March 15, 2021

Ballpark Station Area Plan

- Project Partners: WFRC, UTA, and SLC Transportation
- WFRC Transportation & Land Use Connection (TLC) grant
- Preliminary Goals:
 - Community/Neighbors, City/UTA – define goals & vision for future neighborhood
 - Improve transportation options & connections

Ballpark map



900 SOUTH

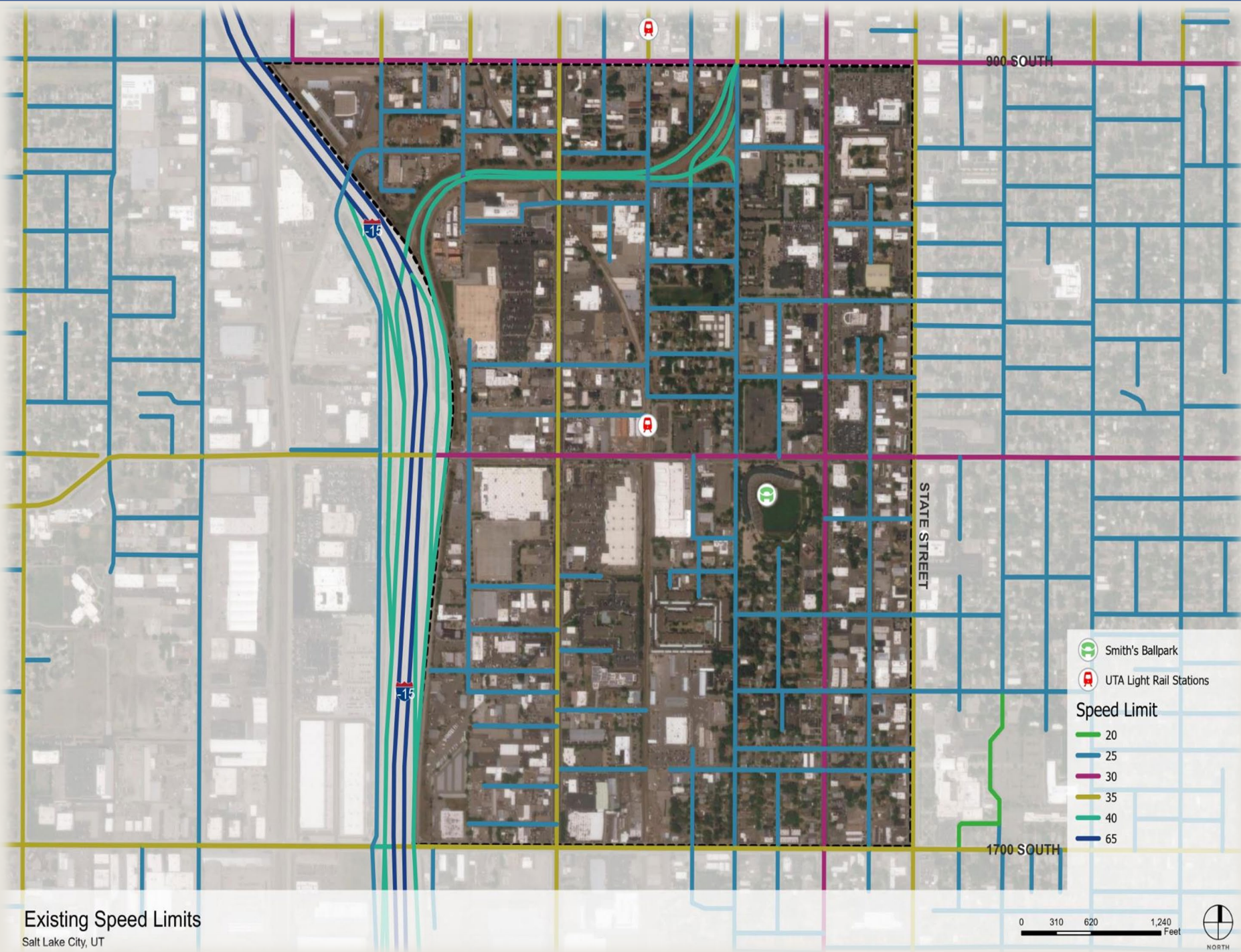
STATE STREET

1700 SOUTH



Transportation and Connectivity

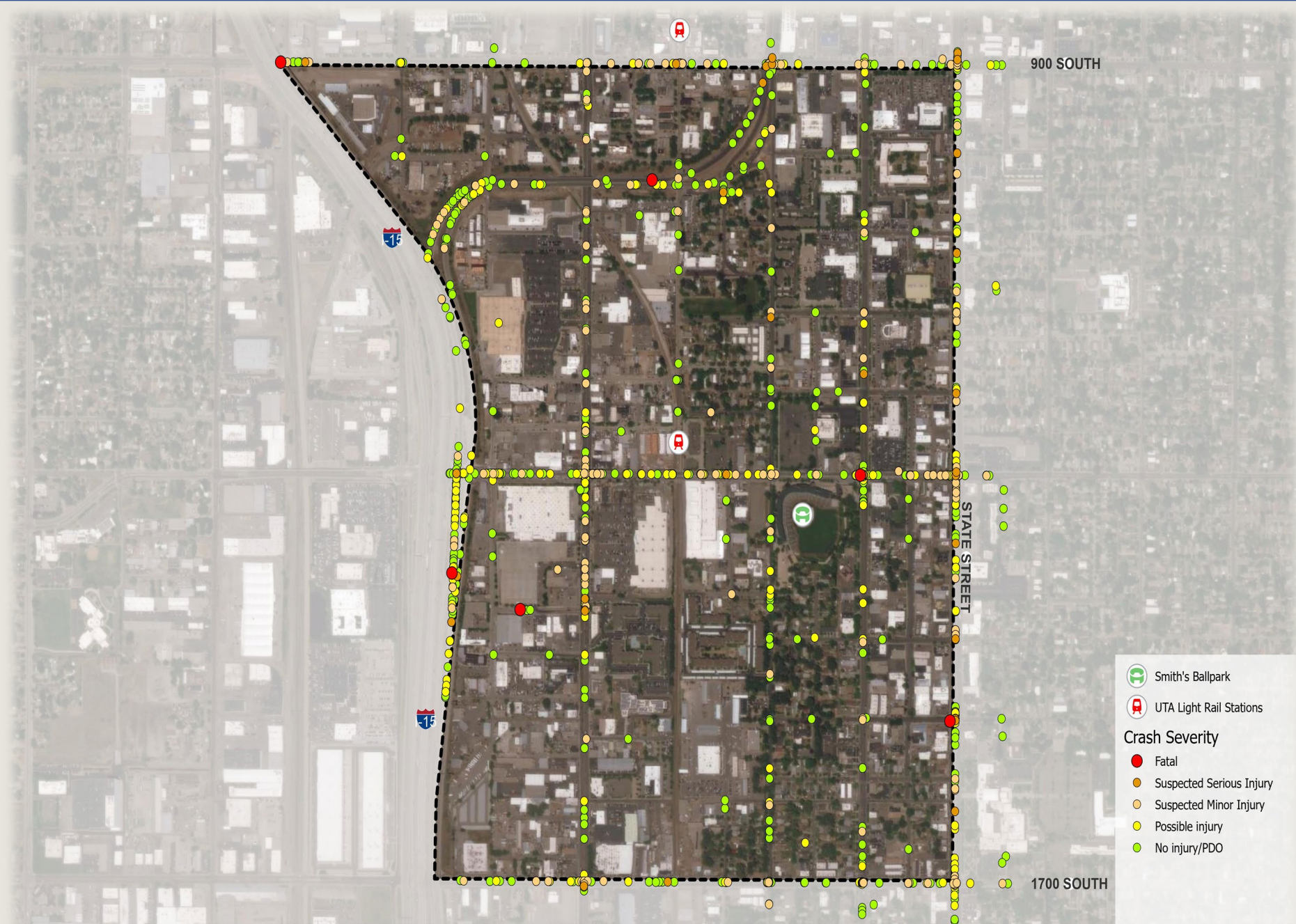
Speed Limits



Total Crashes

2015 - 2020

- **Total:** 1,306 Crashes
- **Fatal:** 6 Crashes
- **Injury:** 596 Crashes
- **PDO:** 704 Crashes



All Crashes (2015-2020)
Salt Lake City, UT

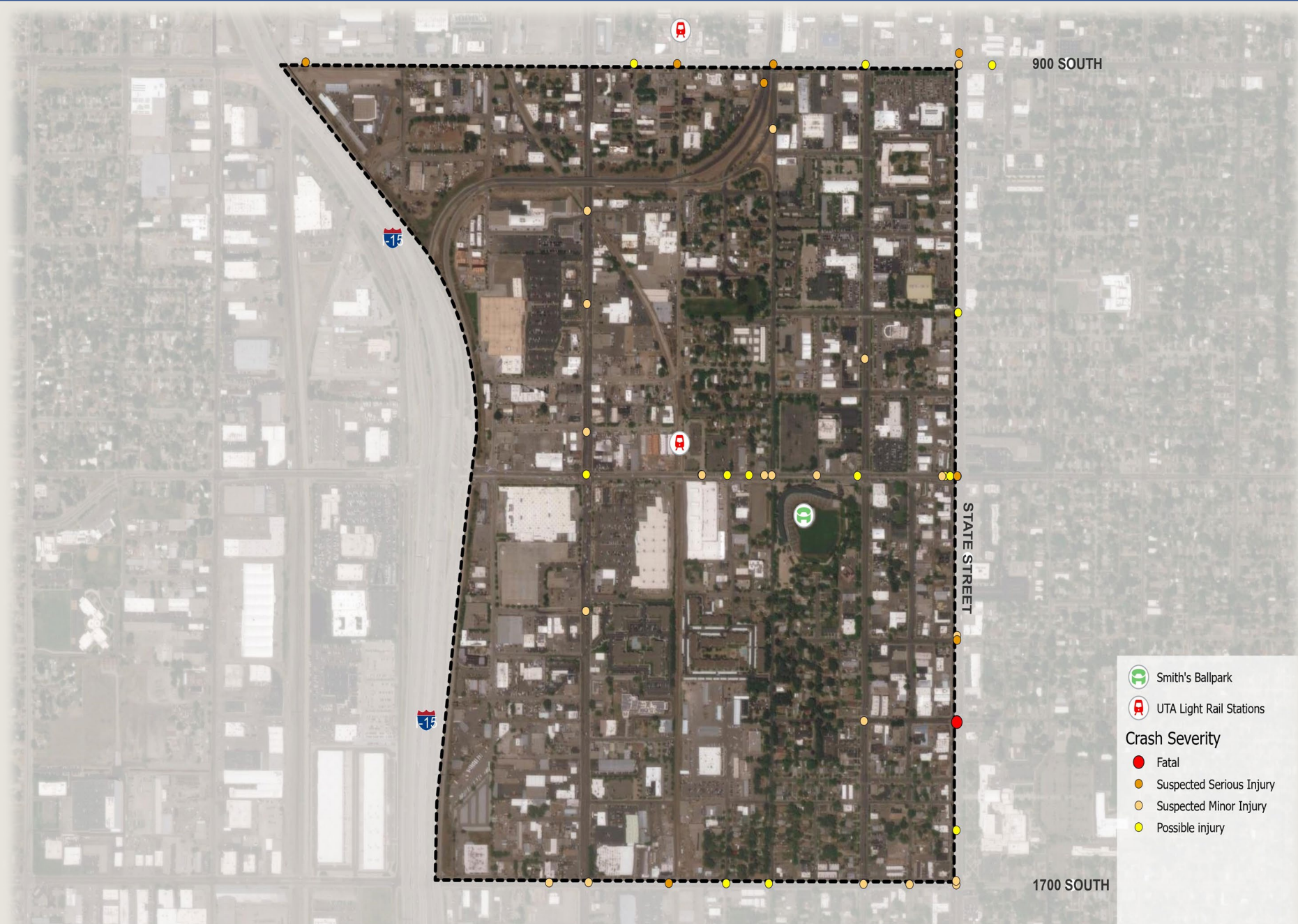
0 310 620 1,240 Feet



Bike Crashes

2015 - 2020

- **Total:** 52 Crashes
- **Fatal:** 1 Crashes
- **Injury:** 51 Crashes
- **PDO:** 0 Crashes



Bike Crashes (2015-2020)
Salt Lake City, UT

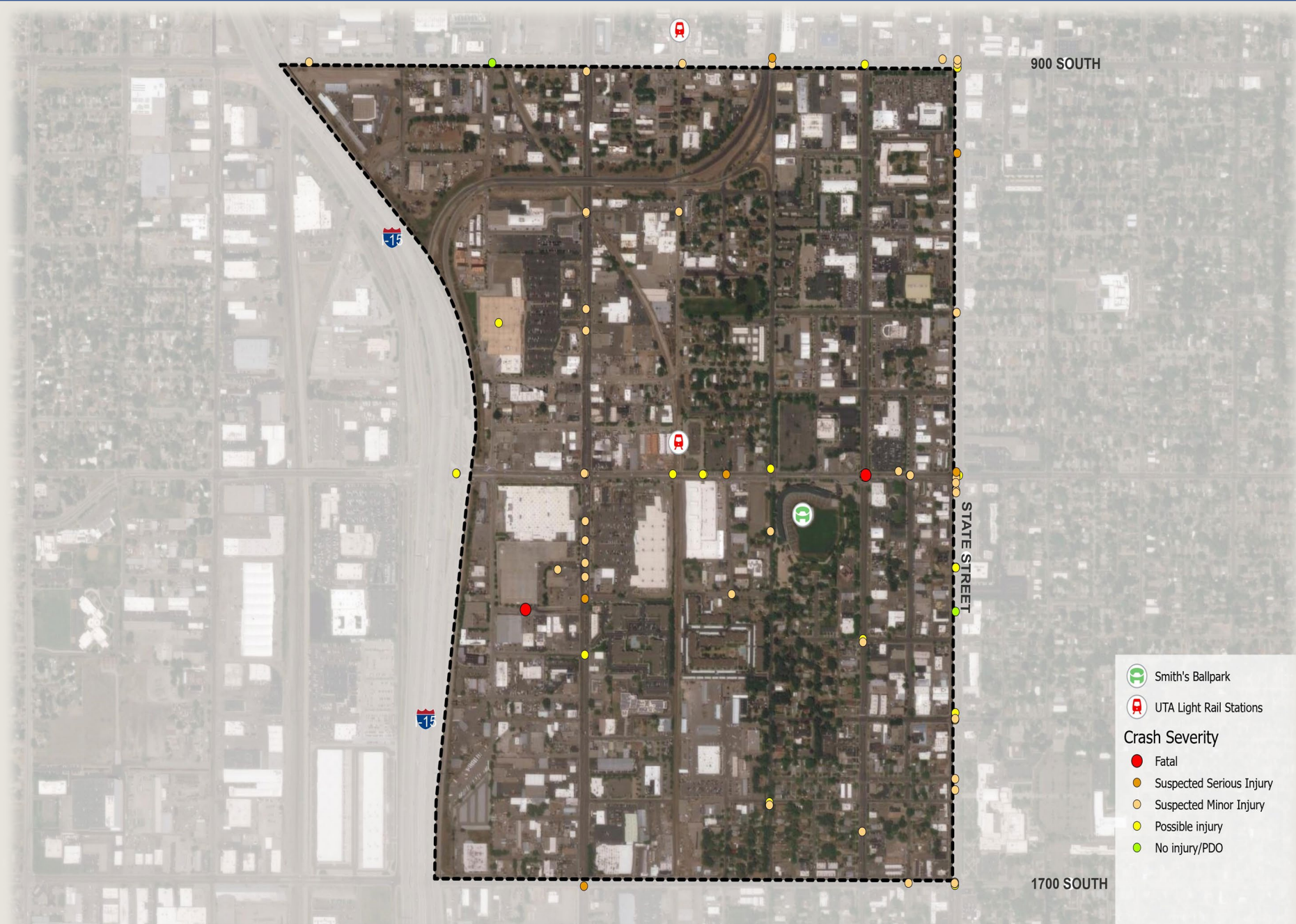
0 310 620 1,240 Feet



Pedestrian Crashes

2015 - 2020

- **Total:** 77 Crashes
- **Fatal:** 2 Crashes
- **Injury:** 73 Crashes
- **PDO:** 2 Crashes

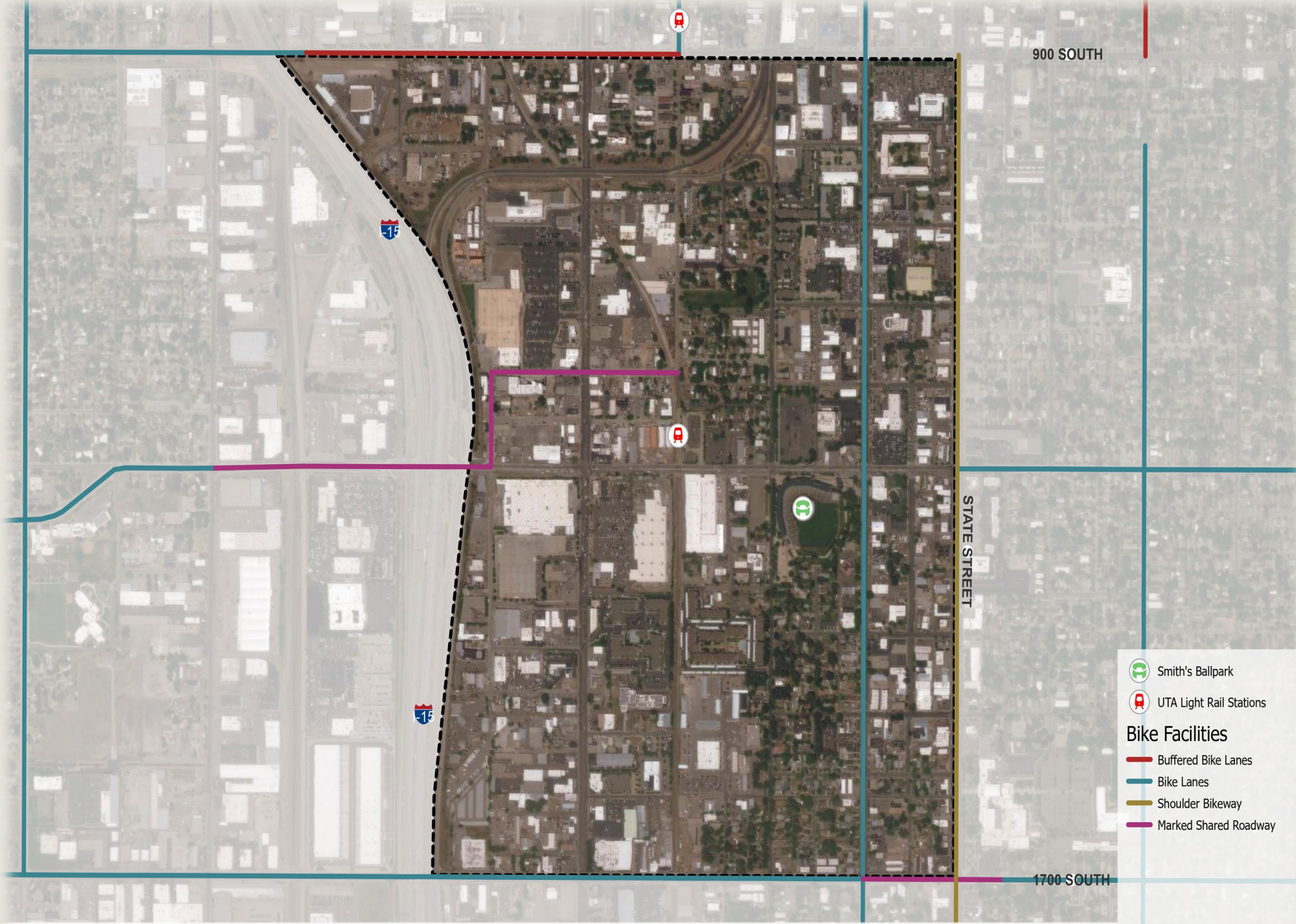


Pedestrian Crashes (2015-2020)

Salt Lake City, UT

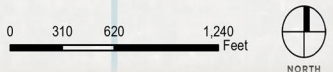
Bike Facilities

Existing



- Smith's Ballpark
- UTA Light Rail Stations
- Bike Facilities**
 - Buffered Bike Lanes
 - Bike Lanes
 - Shoulder Bikeway
 - Marked Shared Roadway

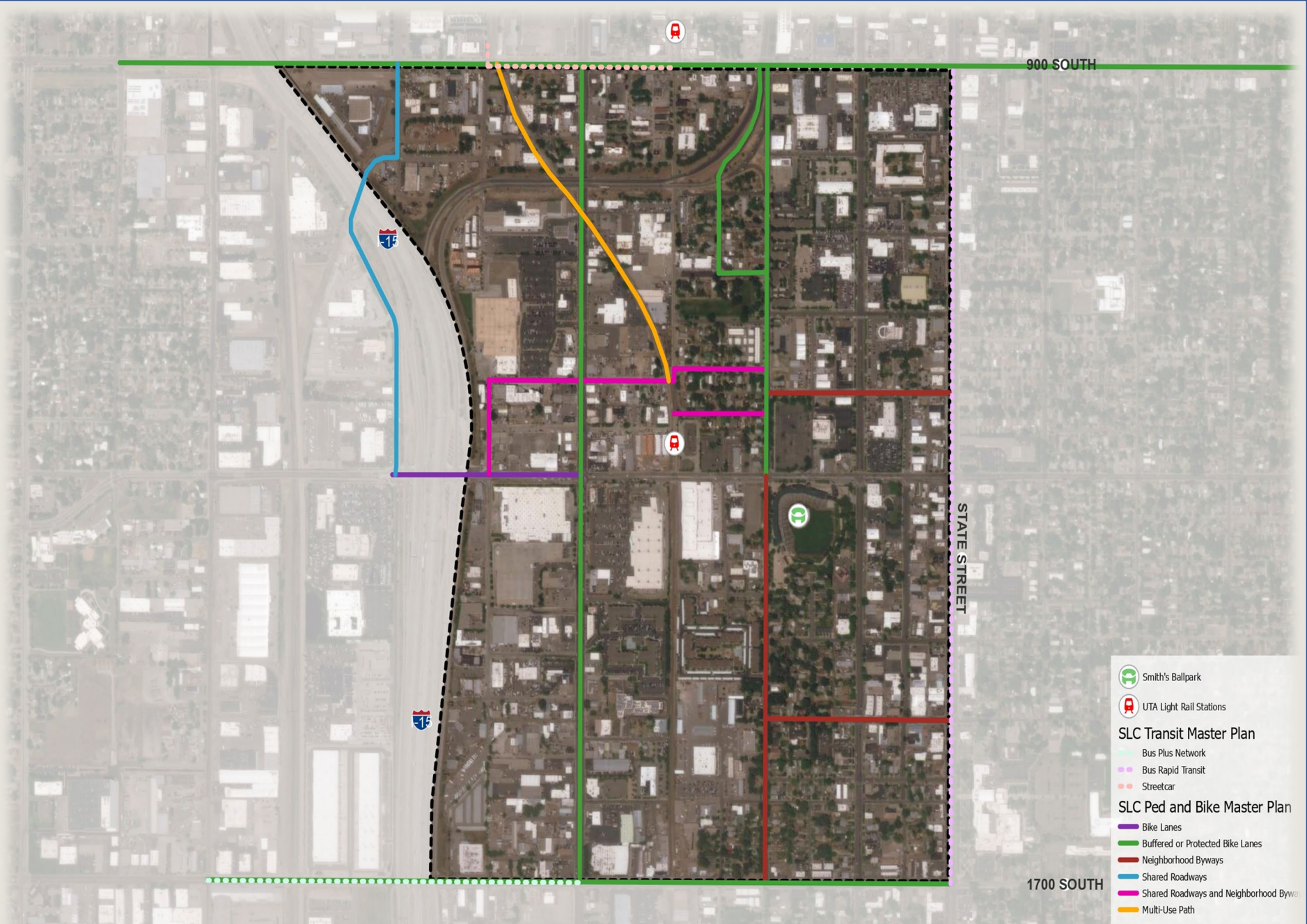
Existing Bike Facilities
Salt Lake City, UT



Future Recommended Projects

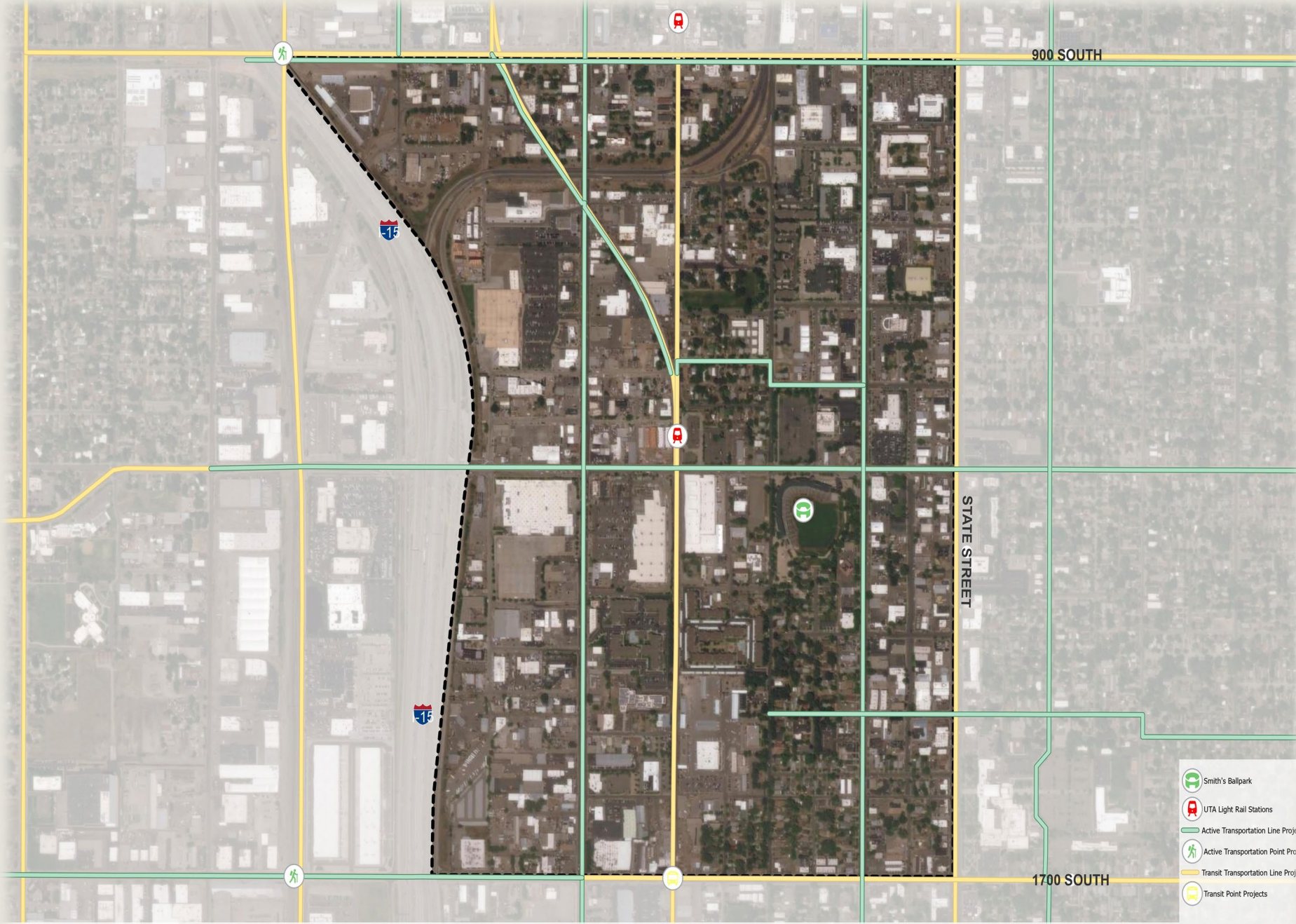
Various Sources

- Bus Rapid Transit
- Street Car
- Bike Lane
- Neighborhood Byways
- Shared Roadways
- Multi-Use Paths

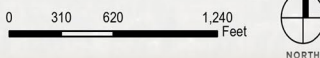


WFRC Future Projects

2050 Regional Transportation Plan



WFRC RTP 2050 Planned Active Transportation and Transit Projects
Salt Lake City, UT



Discussion

- What role does transportation/connectivity play in the future of Ballpark Neighborhood?
- What ideas are most critical to transportation/connectivity?
- What locations are most critical to transportation/connectivity?
- What 3 – 5 public sector actions or investments are most important to make this happen?
- What 3 – 5 private sector actions or investments are most important to make this happen?

Community Event – March 20th

- 10am-noon
- Pre-register: <https://forms.gle/MJvtFceqiDazCEYR7>