

An aerial photograph of a highway interchange, likely I-15, with a blue overlay. The text is white and centered.

I-15 ENVIRONMENTAL IMPACT STATEMENT Farmington to Salt Lake City

Scoping, Purpose and Need

Spring 2022

What we will cover

- Purpose of the study
- What we know so far
- Opportunities for feedback

An aerial photograph of a city and surrounding mountains, overlaid with a semi-transparent blue filter. The city below shows a mix of residential and commercial areas, with a prominent multi-lane highway running diagonally. In the background, a range of mountains is visible under a clear sky. The text 'Purpose of the Study' is centered in white.

Purpose of the Study

Utah's Quality of Life Framework



Better
Mobility



Good
Health

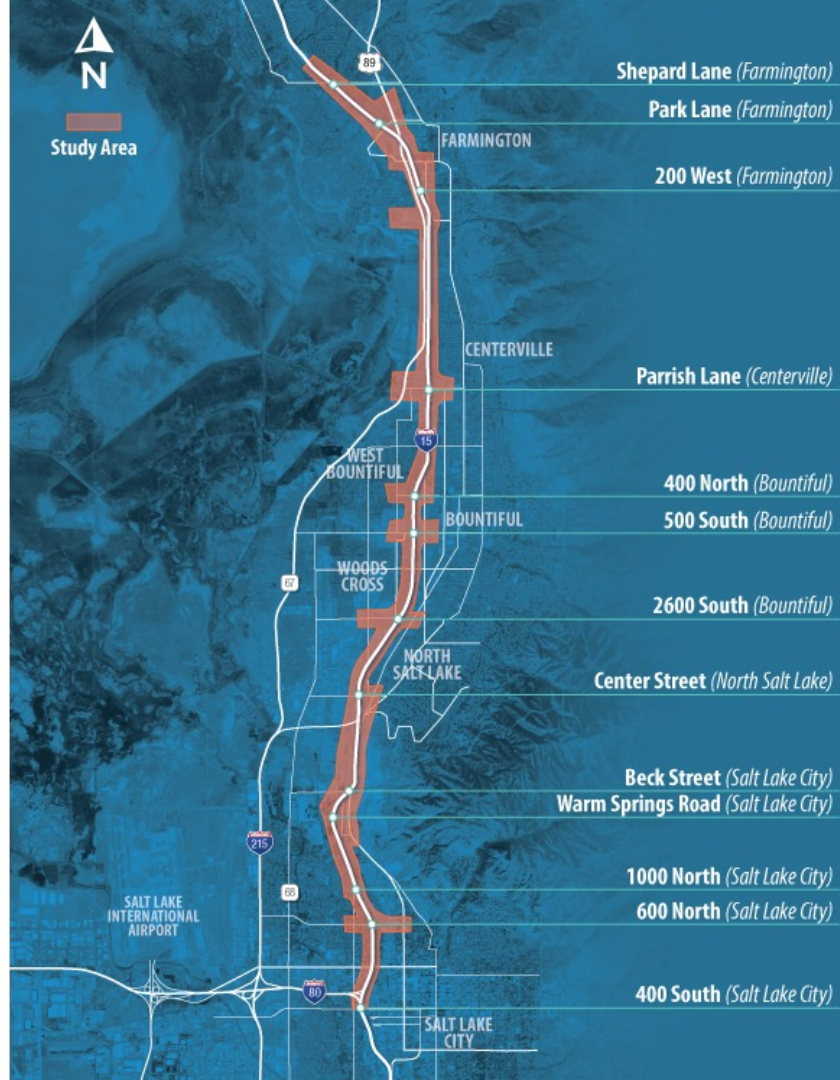


Connected
Communities

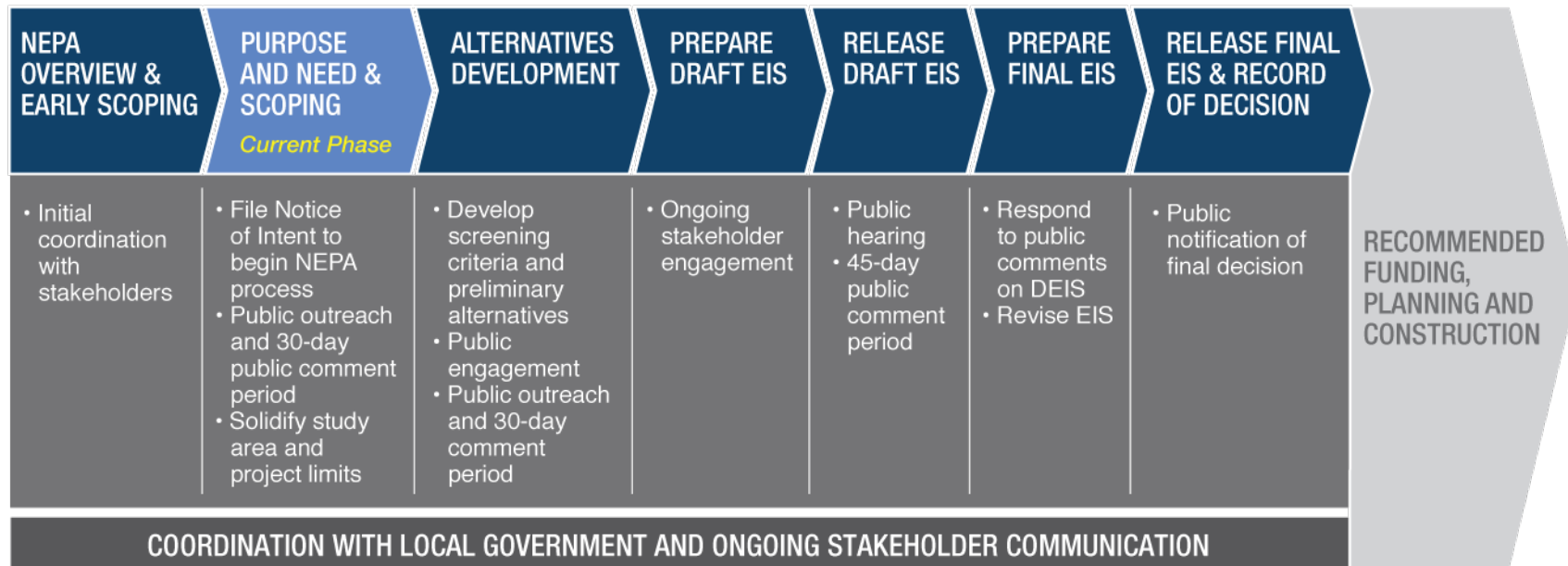


Strong
Economy

UDOT's Mission



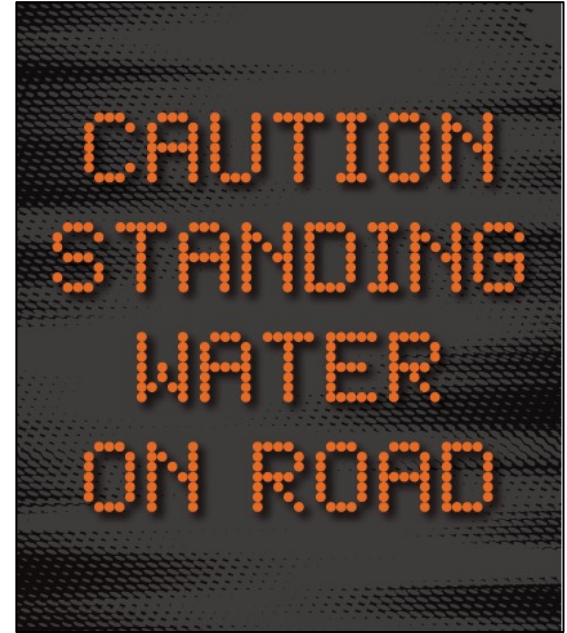
Study Process



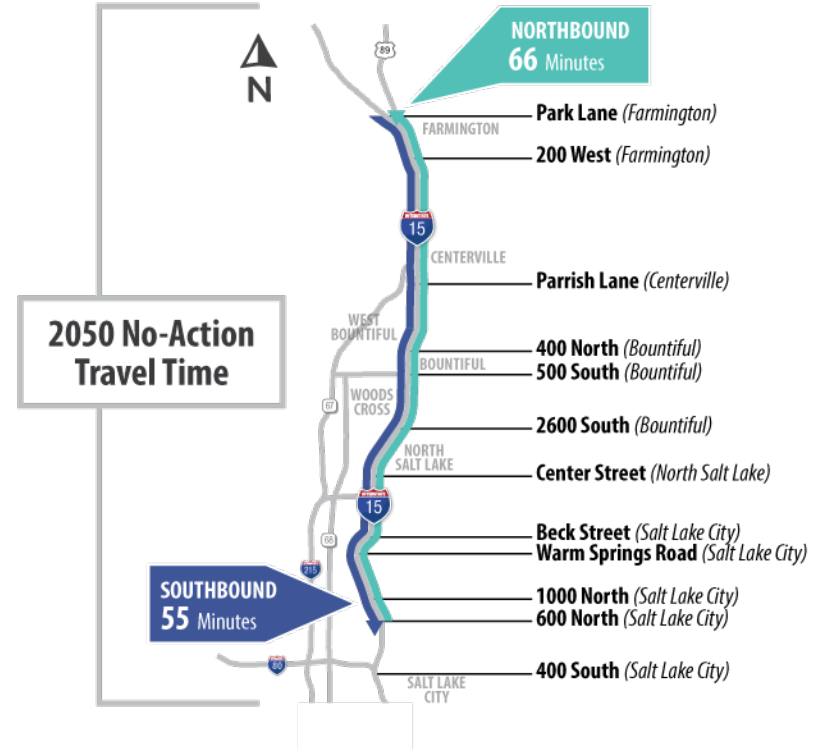
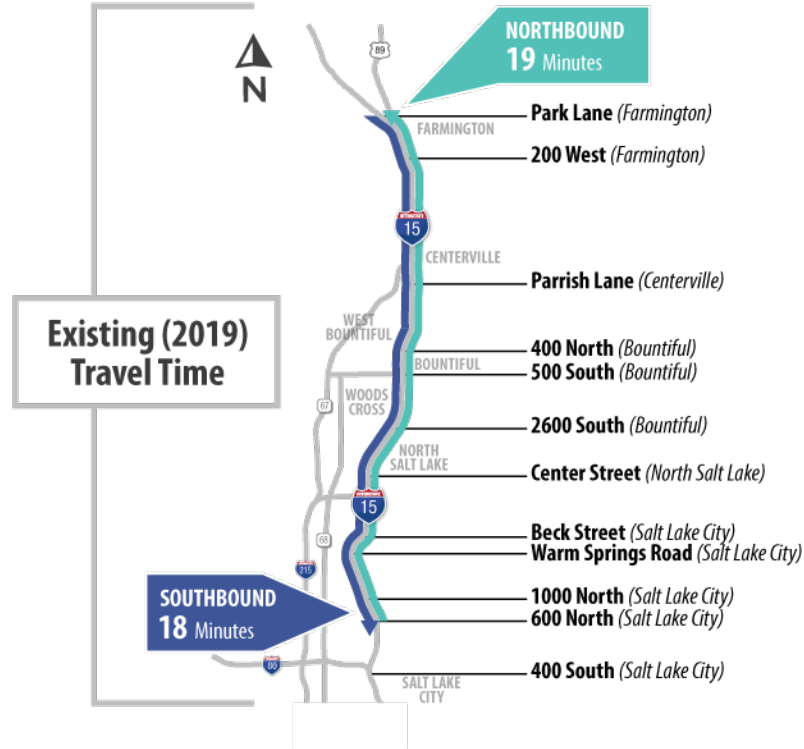
An aerial photograph of a city and surrounding mountains, overlaid with a semi-transparent blue filter. The city below shows a complex network of roads, including a multi-lane highway, and various urban structures. In the background, a range of mountains is visible under a clear sky. The text "What We Know So Far" is centered in white.

What We Know So Far

Aging Infrastructure



Travel Time



Interchange Needs

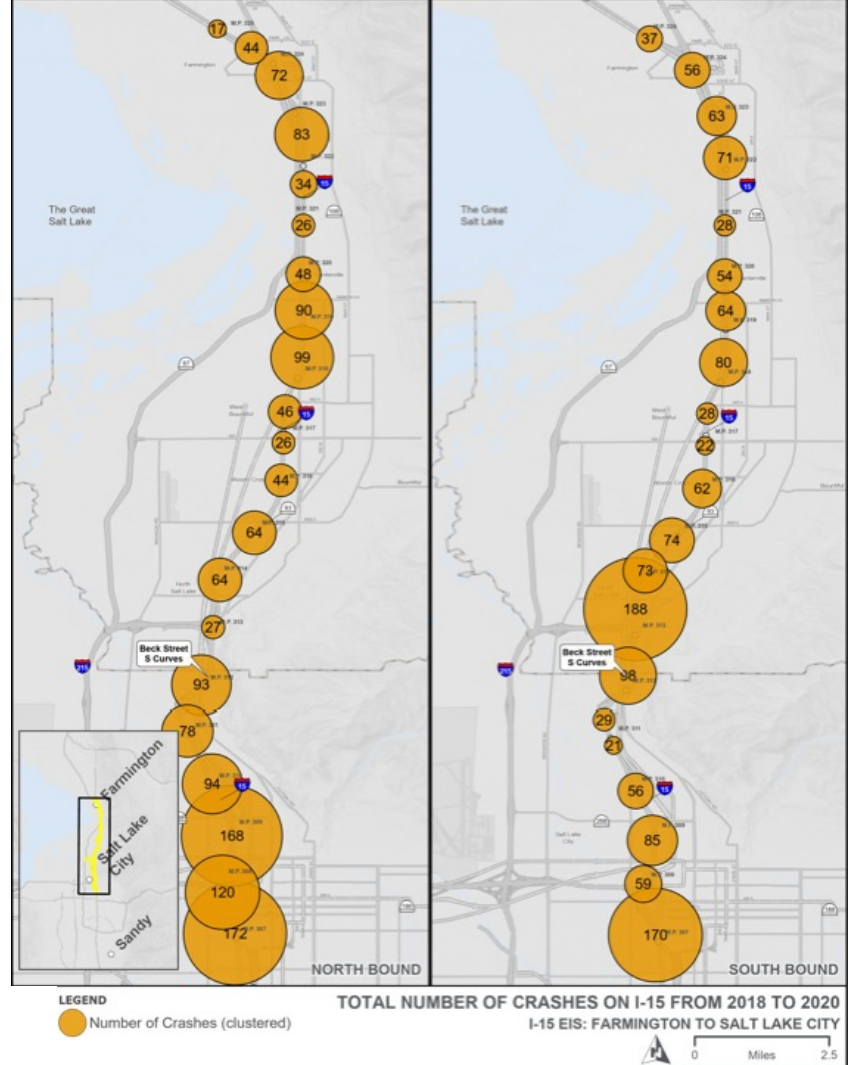


Safety

Shoulders



Sharp Curves



Limited Connections



Limited Connections – East-West



Early Stakeholder Engagement



Resources To Be Studied

- Land use
- Community and property impacts
- Environmental justice
- Economics
- Traffic and transportation
- Equity
- Air quality
- Noise
- Water resources
- Ecosystem resources
- Floodplains
- Cultural resources
- Hazardous materials and waste sites
- Visual resources

An aerial photograph of a city and surrounding mountains, overlaid with a semi-transparent blue filter. The city below shows a complex network of roads, including a multi-lane highway, and various urban structures. The mountains in the background are rugged and covered in sparse vegetation. The text "Opportunities for Input" is centered in a large, white, sans-serif font.

Opportunities for Input

Draft Purpose and Need Statement

Purpose: To improve safety, replace aging infrastructure, provide better mobility for all travel modes, strengthen the state and local economy, and better connect communities along I-15 from Farmington to Salt Lake City. The project purpose consists of the following items which are organized by UDOT's Quality of Life Framework categories of Good Health, Connected Communities, Strong Economy, and Better Mobility.



Draft Purpose and Need Statement



Good Health and Connected Communities



- Improve the safety and operations of I-15 mainline, I-15 interchanges, bicyclist and pedestrian crossings, and the supporting roadway network.
- Be consistent with planned land use, growth objectives, and transportation plans.
- Enhance access and connectivity to FrontRunner, connection to transit, regional trails and across I-15.

Draft Purpose and Need Statement

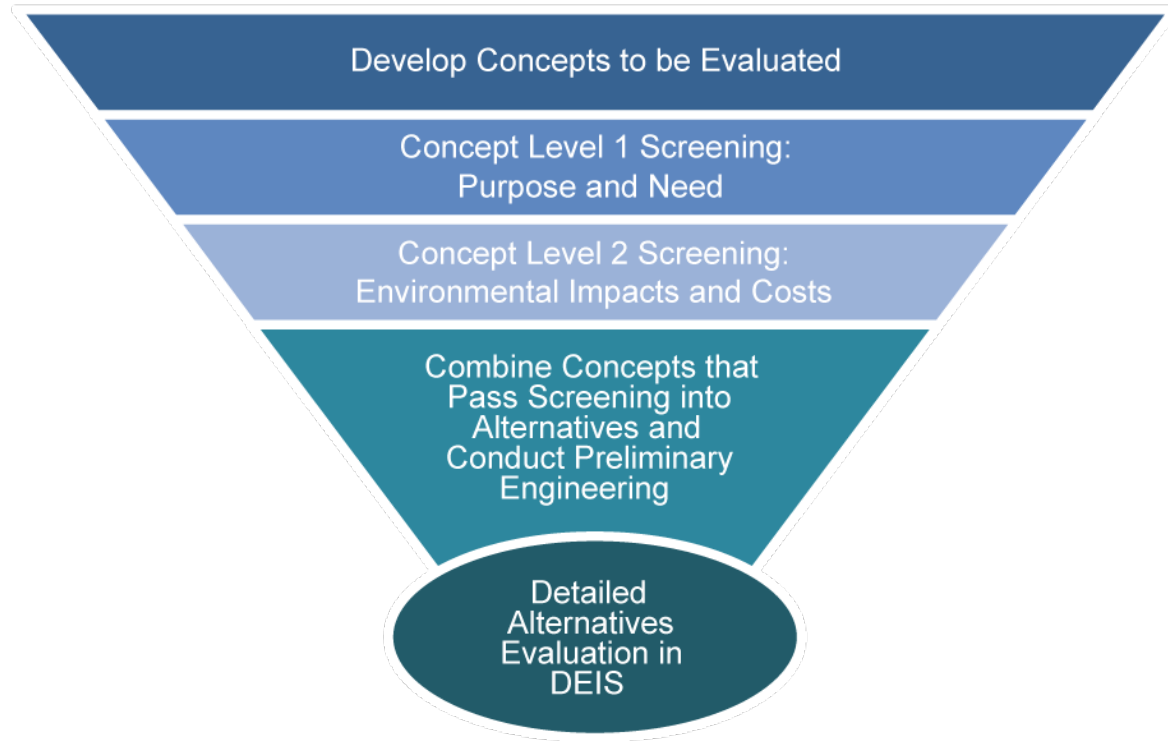


Strong Economy and Better Mobility

- Replace aging infrastructure on I-15.
- Enhance the economy by reducing travel delay on I-15.
- Improve mobility and operations on I-15 mainline, I-15 interchanges, the supporting roadway network, transit connections, and bicyclist and pedestrian facilities to help accommodate projected 2050 travel demand.



Screening Criteria



Ways to submit a comment – April 11-May 13



Visit **www.i15eis.udot.utah.gov** and use the comment map to enter a comment (también está disponible una versión en español)



Send an email to i15eis@utah.gov

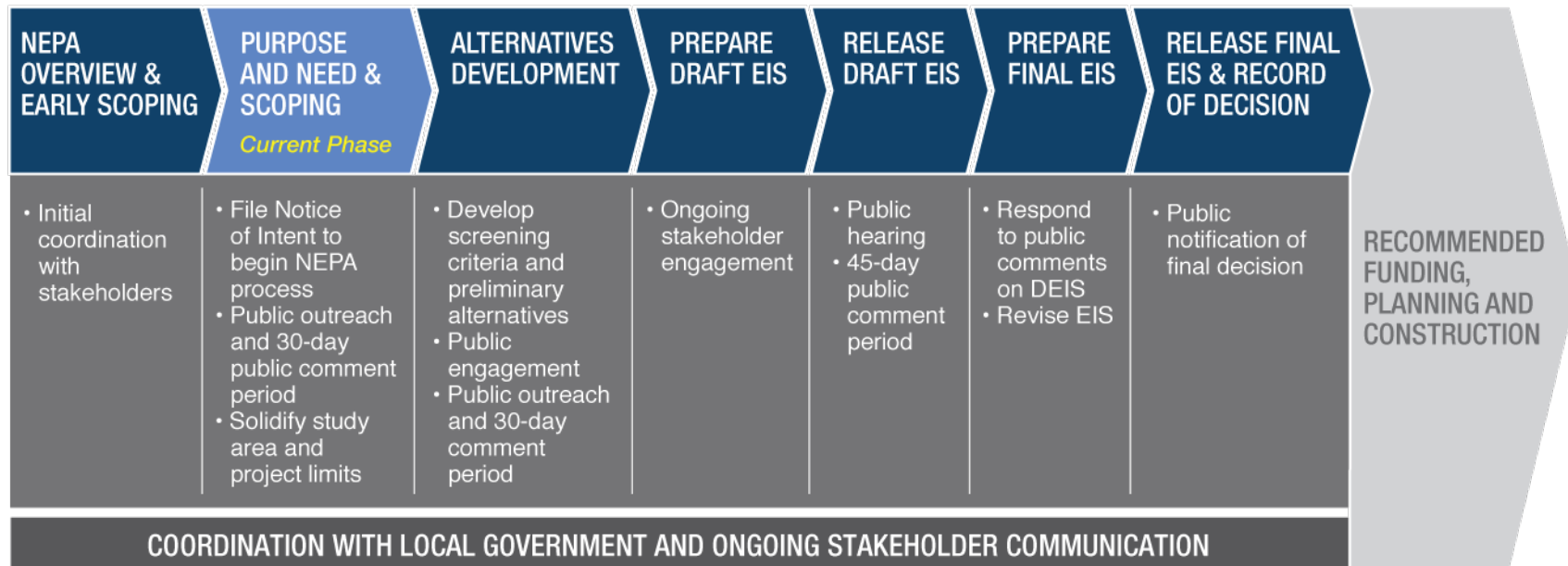


Address: 392 E Winchester St., Ste. 300
Salt Lake City, UT 84107



Any individual needing special accommodations to make a comment should contact the project team at (385) 220-5797

Schedule



Ways to stay in touch



Email: i15eis@utah.gov



Website: i15eis.udot.utah.gov



Phone: 385-220-5797



Facebook Group: facebook.com/groups/i15eis

An aerial photograph of a highway interchange, likely I-15, with a blue overlay. The text is white and centered.

I-15 ENVIRONMENTAL IMPACT STATEMENT Farmington to Salt Lake City

Scoping, Purpose and Need

Spring 2022