

BARRICADE COMPANIES

AAA Barricade Company
801-427-7337
130 West Main Street
Lehi, UT 84043
www.aabarricade.com

Barricade Service & Sales
801-282-9088
500 South 1815 West
Salt Lake City, UT 84104
www.barricadeservices.net

Interstate Barricades
801-685-2668 (Sales)
800-924-0224 (Rental)
4893 South 300 West
Murray, UT 84107
www.interstatebarricades.com

Peck Traffic Safety
801-965-9995
801-633-1013 (Emergency)
800-6-STRIPES (678-7473)
1775 South Redwood Road
Salt Lake City, UT 84104
www.pecktrafficsafety.com

Rocky Mountain Barricade
801-226-2138
1020 North Geneva Road
Orem, UT 84057

Temporary Fence
801-622-9306
P.O. Box 712
Roy, Utah 84067
www.temporaryfenceutah.com

Traffic Safety Rentals
801-627-1970 (Ogden)
801-328-3400 (SL)
979 West 24th Street
Ogden, UT 84401
www.tsrentals.com

Utah Barricade
801-973-9800
800-999-9875
3232 South Redwood Road
Salt Lake City, UT 84119
www.utahbarricade.com

Wasatch Barricade
801-282-0000
4185 West 8370 South
West Jordan, UT 84088
www.wasatchbarricade.com

What is the magnitude of Work Zone accidents?

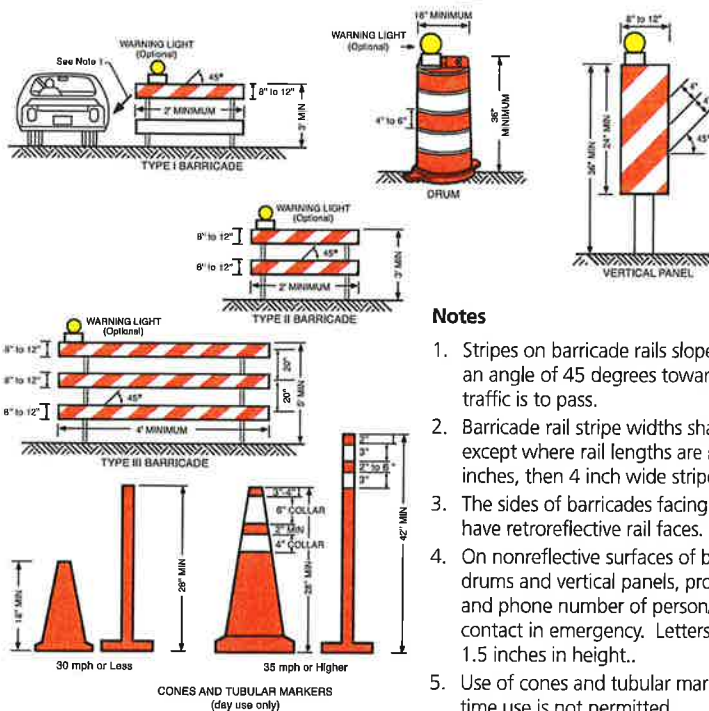
Nationwide (annually)

- More than 40,000 people injured per year;
- More than 900 fatalities per year;
- Yearly fatalities have increased 50% over the past 5 years;
- 80% of fatalities are motorists;
- 15% of fatalities are pedestrians and bicyclists;
- 5% of fatalities are workers; and, as much as 20% of the National Highway System is under construction during the peak summer construction season.

In Utah (annually)

- 830 total Work Zone accidents;
- 870 people injured in Work Zones; and,
- 5 fatalities in Work Zones.

Channelizing Devices



Notes

1. Stripes on barricade rails slope downward at an angle of 45 degrees toward the direction traffic is to pass.
2. Barricade rail stripe widths shall be 6 inches except where rail lengths are less than 36 inches, then 4 inch wide stripes may be used.
3. The sides of barricades facing traffic shall have retroreflective rail faces.
4. On nonreflective surfaces of barricades, drums and vertical panels, provide the name and phone number of person/company to contact in emergency. Letters not less than 1.5 inches in height.
5. Use of cones and tubular markers for night time use is not permitted.

More info and a copy of our Traffic Control Manual can be found at:

www.slcgov.com/transportation/construction

