

SLC West ↔ East CONNECT FOUNDATION REPORT SUMMARY

The WE Connect (Salt Lake City West-East Connections Study) kicked off in February 2025. Since then, we have been working on defining the problem. This is a critical phase in the WE Connect study, because a clearly defined problem amplifying community voices allows us to develop goals and evaluate solutions.

In addition to gathering and reviewing community feedback through surveys, events, and a community advisory board, we prepared the Foundations Report in July 2025. This report is a snapshot of key trends shaping Salt Lake City and its Westside. We will use it to **better understand** current conditions and **identify opportunities** to strengthen west-east connections.

The report outlines key information related to

- » Demographics and Workforce
- » Transportation
- » Health and Safety
- » Housing and Public Services



WHO WE ARE

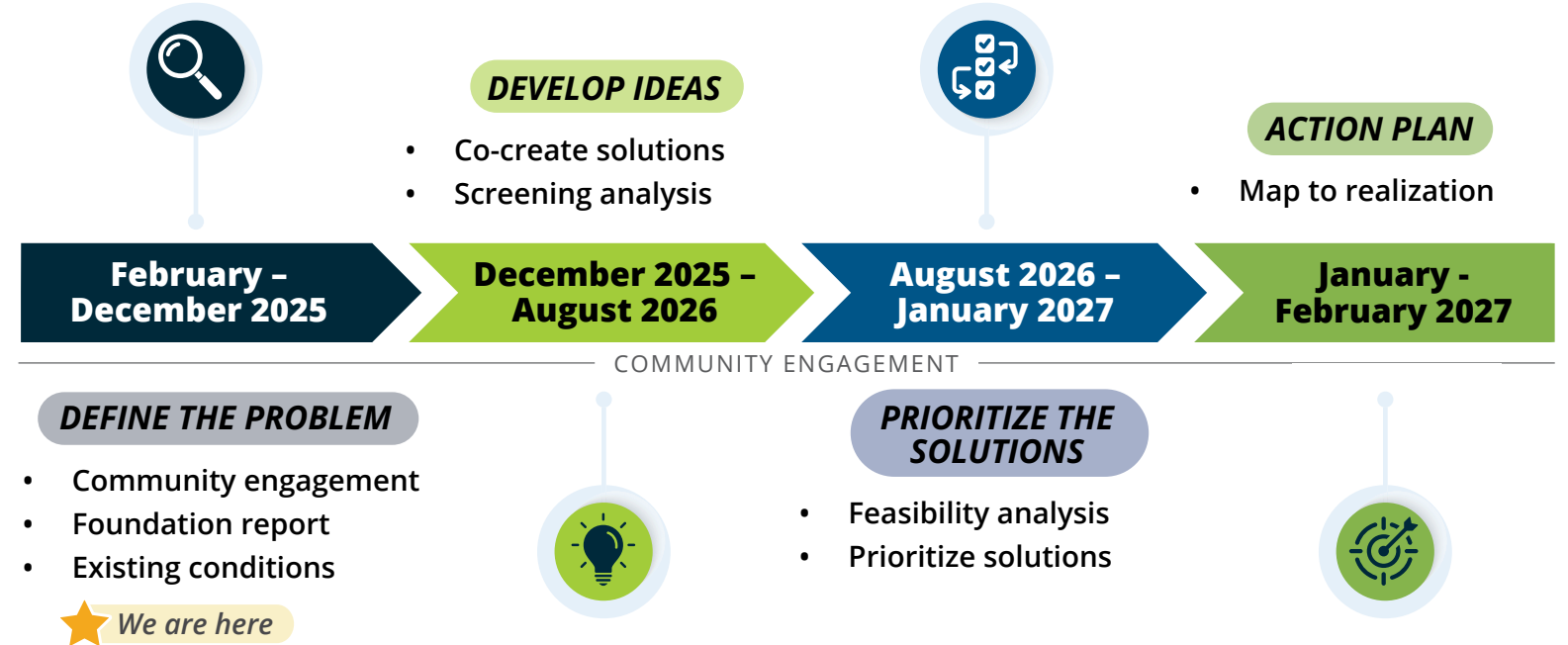
Salt Lake City's Westside is comprised of six major neighborhoods: **Westpointe, Rose Park, Jordan Meadows, Fairpark, Poplar Grove, and Glendale**. The Westside of Salt Lake City is more than a collection of neighborhoods—it's a vibrant, resilient community shaped by generations of cultural richness, mutual care, and grassroots action. These traits form the foundation for future investments and opportunities.

The westside's cultural and social fabric is one of its greatest strengths.

WHAT WE LEARNED

- » Approximately **48%** of the Westside identifies as Hispanic or Latino, more than double the citywide share of 22%.
- » Just under **18%** of Westside residents have earned a bachelor's degree, lower than the citywide average of 30%.
- » Roughly **one in three** jobs in the Westside pays under \$40,000 annually.
- » Only **6%** of jobs on the Westside are held by Westside residents.

We Connect Study Timeline



"I have feelings of separation and isolation."
-Seth



26% of those living on the Westside report living with a disability.

22% of those living in Salt Lake City report living with a disability.

"Fifteen years ago a woman backed out dating me because I live on the Westside."
-Mike



11% of Westside residents speak English less than "very well"

9% of Salt Lake City residents speak English less than "very well"

"I think it's more of an economic divide."
-Paul



12% of households in the Westside are living below the poverty level.

13% of households in Salt Lake City are living below the poverty level.

Source: 2023 US Census American Community Survey and 2021 SLC Westside Transportation Equity Study



Source: ESRI Business Analyst Online (BAO)



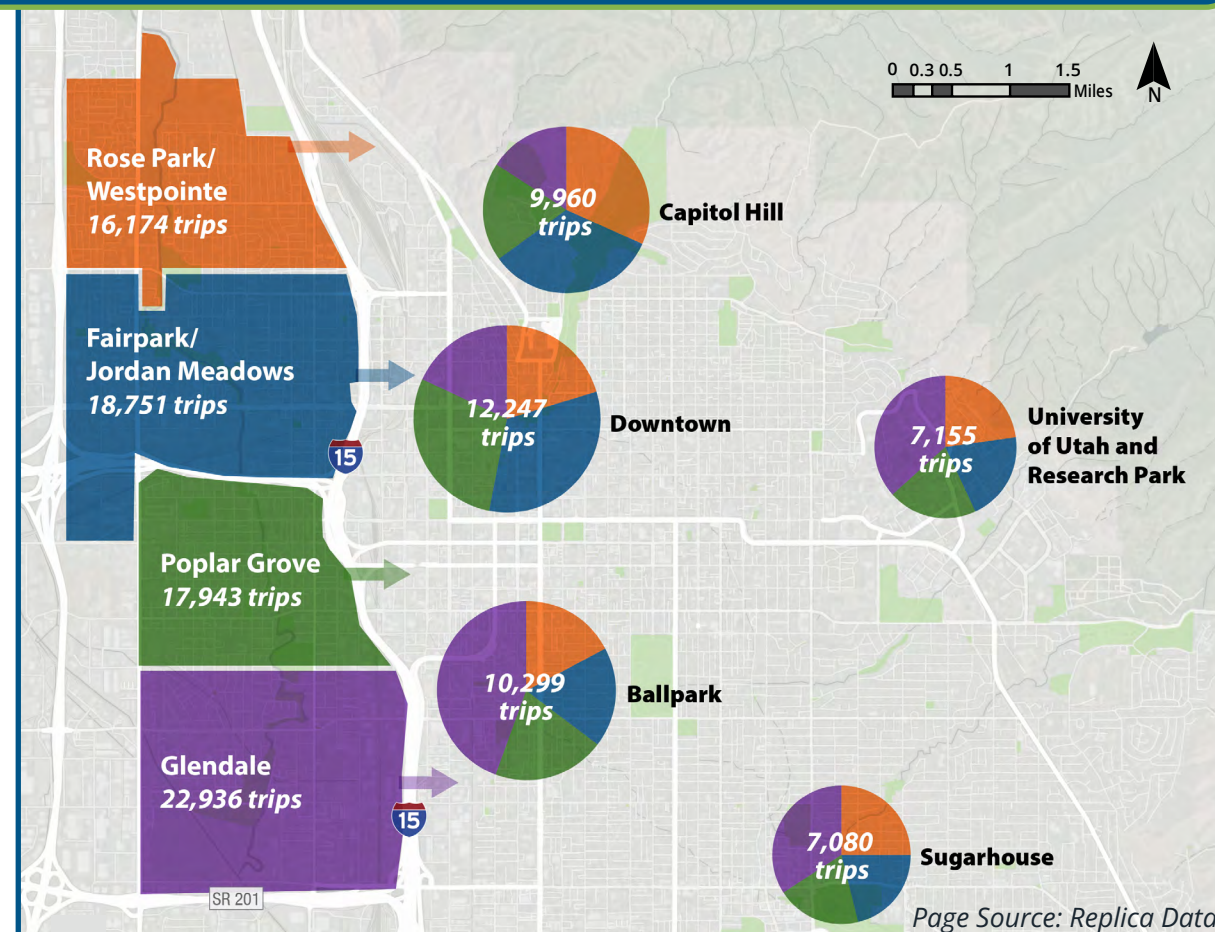
HOW WE MOVE

*The divide impacts people traveling by all modes, shapes daily decisions about how and when to travel, and is a challenge for many businesses. Put simply, the interstate and railways create **physical and psychological barriers** that limit access to jobs, services, and recreation for Westside residents.*

WHAT WE LEARNED

- » Each day, **tens of thousands** of Westside residents make trips across the divide to reach destinations on the city's east side.
- » I-15 and freight and passenger rail lines disrupt the grid and limit reliable west-east travel. These barriers improve regional vehicle and freight flow but create **significant delays** at at-grade rail crossings for people driving, biking, walking, and rolling.
- » The 9-Line Trail and Folsom Trail provide **high-quality trail connections** across the railroad tracks and underneath the interstate. Lower-quality painted bike lanes are present on 300 N, North Temple, 200 S, 700 S, 800 S, and 1700 S.
- » Salt Lake City's Westside neighborhoods have some of the **lowest Walk Score** ratings in the City.
- » Salt Lake City has a robust public transit system including TRAX and buses, but the Westside still **lacks some direct and frequent connections** to major destinations on the Eastside.
- » Transit amenities on the Westside are in need of improvement. While most transit stops in Westside neighborhoods do have lighting, **many lack benches and shelters**, especially on Redwood Road.

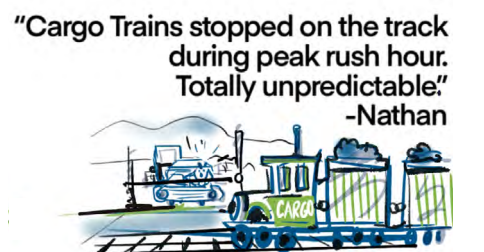
This map shows eastward travel across I-15 and rail from the Westside on a typical weekday. Each pie chart displays the top five Eastside destinations for Westside residents. The size of each slice shows how many trips come from each Westside neighborhood area, using color to represent where each trip started.



"We need more people focused transportation: Trolley, biking, walking, buses!"
-Peter



"The most frustrating thing for me is how unpredictable my commute is."
-Joe



"Cargo Trains stopped on the track during peak rush hour. Totally unpredictable!"
-Nathan

Existing Efforts and Investments

- » East-West Trail Connections
- » 300 N Grade-Separated Crossing
- » Real time crossing alert signage

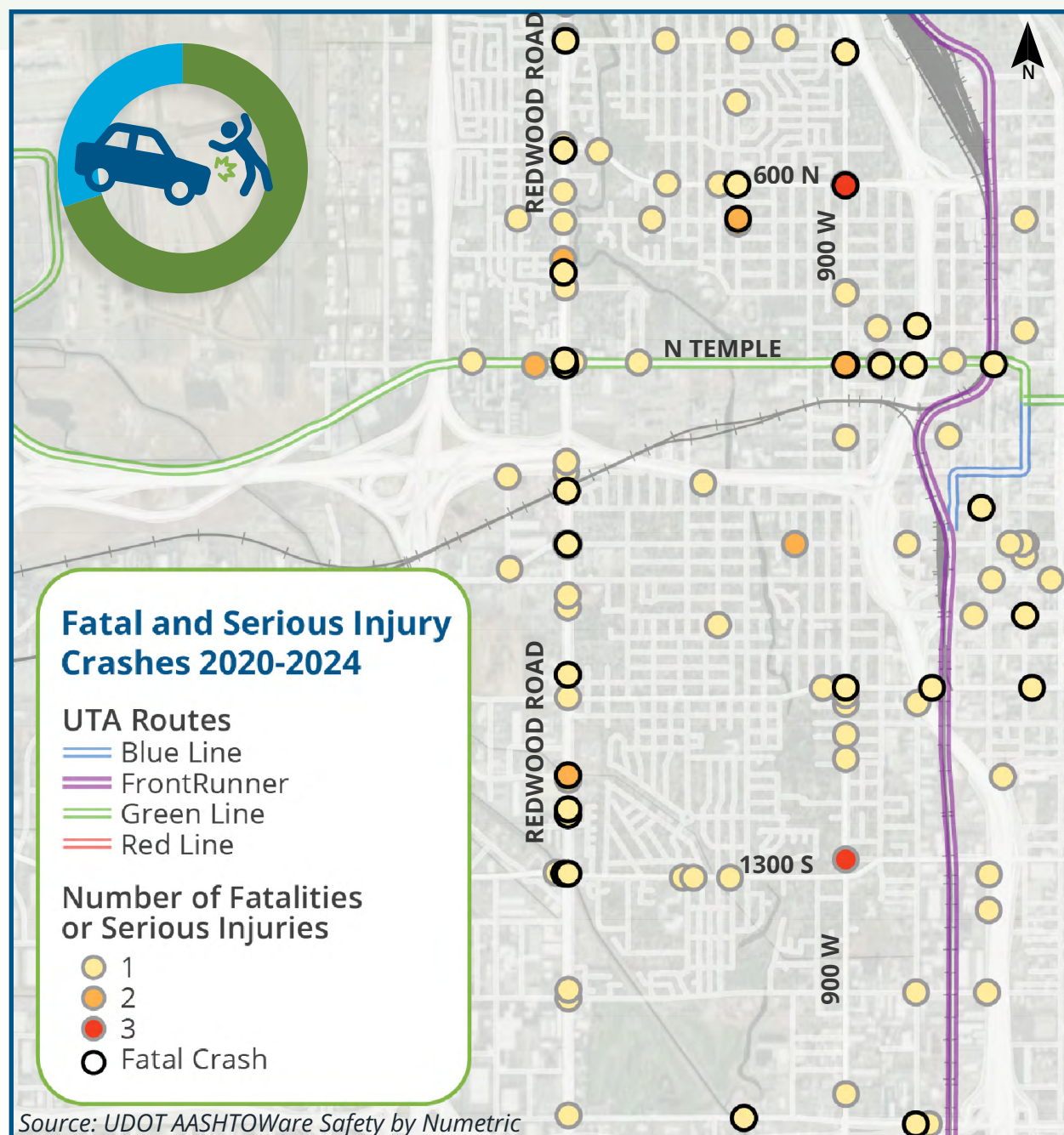
+ OUR WELLBEING

Understanding how factors like traffic safety and environmental health differ across neighborhoods provides important context for improving community wellbeing citywide.

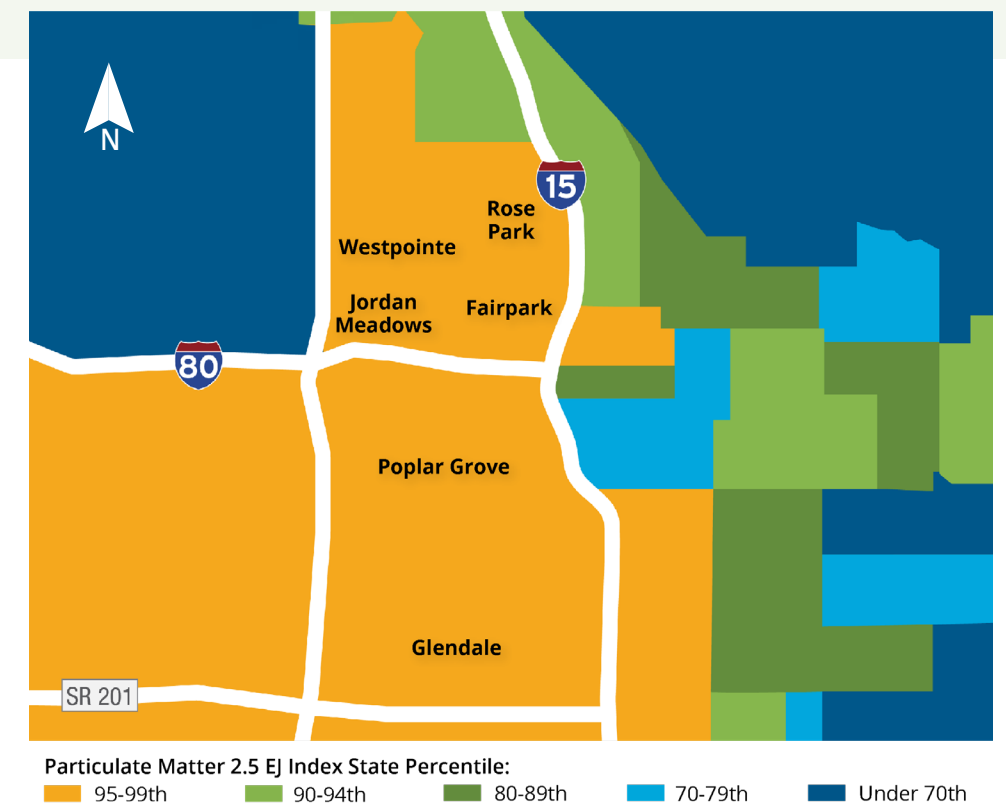
WHAT WE LEARNED

- » **Noise pollution** continues to be an issue that disproportionately affects the Westside.
- » **1 out of every 4** people living on the Westside self reported their general health as less than “good”.

- » **77%** of fatal crashes in SLC take place on the Westside.
- » Most of the Westside is in the 90th percentile or higher for fine particulate matter (PM2.5) exposure. These are tiny inhalable particles linked to **serious health risks**.



“Sound dampening!!!
Train horn is **LOUD**
and **FREQUENT!**”



Existing Efforts and Investments

- » Neighborhood byways on 600 N and 900 W
- » Safe Routes to School programs
- » PHB Signals
- » The Westside Community Conexiones website lists several other ongoing projects and investments



OUR COMMUNITY

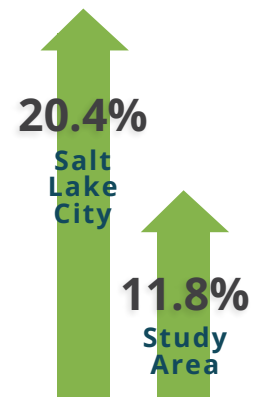
The Westside is home to strong community assets, including parks, schools, and cultural spaces that anchor social connections. However, these assets are often disconnected and have seen less investment contributing to the quality of public and private spaces.

WHAT WE LEARNED

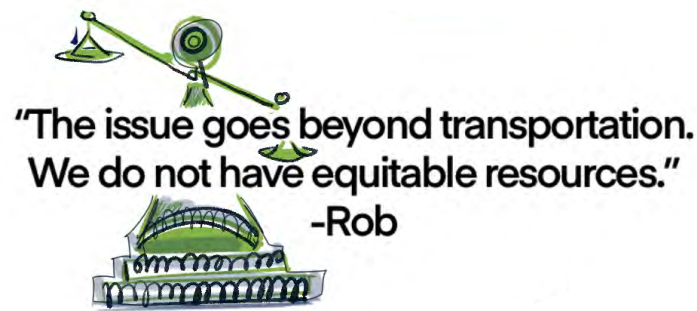
- » **53.6%** of homes on the west side are owner occupied, while 46.4% are renter-occupied.
- » Community feedback received in May – June indicated a broader sense of neglect, inequity, and the need for **expanded amenities**.

» While the Westside has a strong foundation of community infrastructure, mapping commercial activity reveals a critical gap: **limited economic investment**. Commercial activity is concentrated on the east side of I-15.

» Westside housing remains more affordable in comparison to the rest of Salt Lake City. The median home value is \$418,000, **31%** lower than the \$608,000 Citywide average. The median rent on the Westside is \$1,076, compared to \$1,163 across the City. However, the City as a whole struggles with home ownership affordability. In the study area, homes are 39% above the national average.



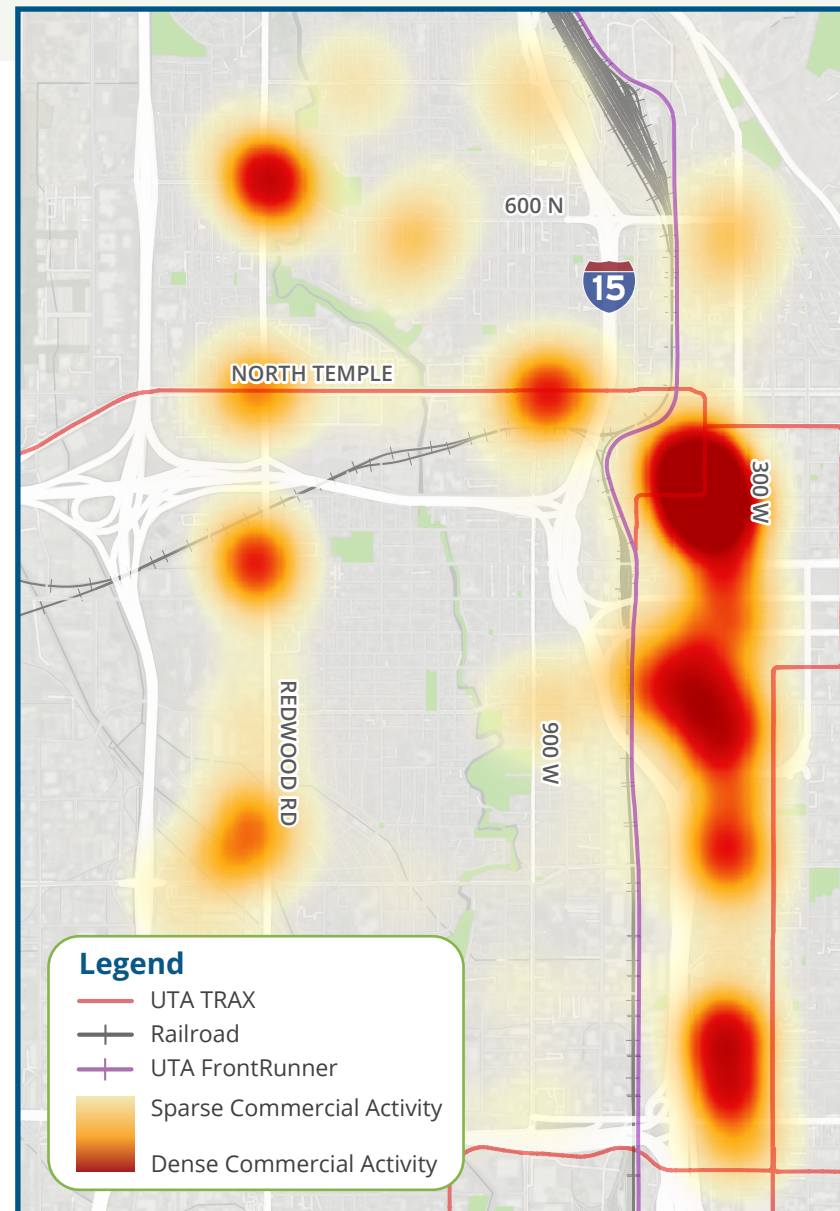
Housing Unit Growth (2010-2024)



"We **NEED** a west side high school!"
(Amenities map, Open House Meeting #1).

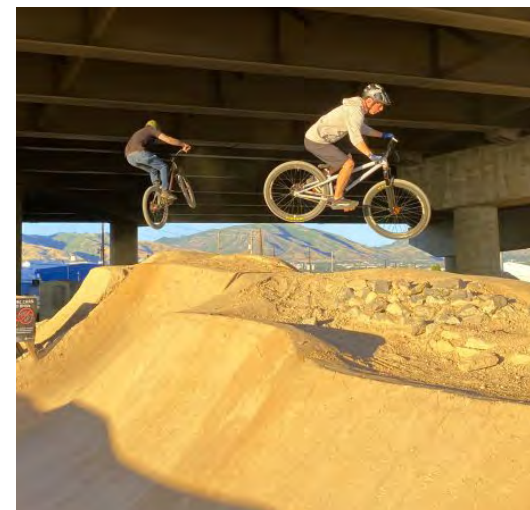
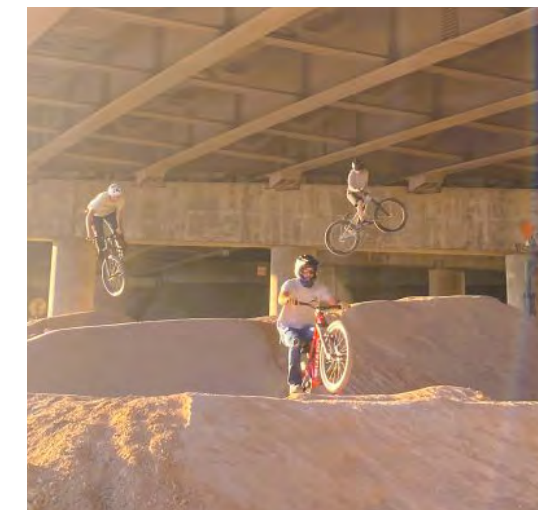
"**More soccer fields!**"
(Amenities map, Open House Meeting #1)

"these neighborhoods are a food desert. This Smith's lacks quality fresh produce. How can we get local, affordable, healthier foods?" (Amenities map, Open House Meeting #1).



Existing Efforts and Investments

- » Love your Block Grants
- » The 9 Line Bike Park



Despite historical underinvestment, Westside residents have mobilized to enhance their neighborhoods, and the City has begun to respond. These efforts, both grassroots and institutional, point to the area's untapped potential.